



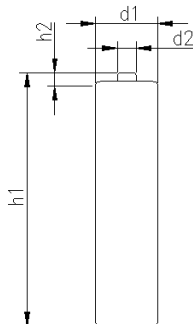
**THE DATASHEET OF  
5030512-XX**



		Conditions	
<b>cell type:</b>	NiMH		
<b>cell size:</b>	AAA		
<b>nominal voltage:</b>	1.2 V		
<b>max. charge voltage:</b>	1.5 V	at standard charge (0.1C / 20°C)	
<b>capacity</b>			
nominal:	900 mAh	discharge at 0.2C	
minimum:	800 mAh	discharge at 0.2C	
	750 mAh	discharge at 1C	
		1.0V end discharge voltage	
		ta: 20°C	
<b>max. continuous discharge current:</b>	2400 mA	ta: 0...45°C	
<b>charge</b>		current	time
standard charge:	90 mA	250 mA	14....16hrs
quick charge:	250 mA	900 mA	4hrs
fast charge:	900 mA		1.1hrs
recommended charge termination control parameters:	0...5 mV 0.8...1 °C 45...50 °C	-ΔV (-delta V) temperature rise per minute TCO (temperature cut off)	
trickle charge current:	8...25 mA	(recommended)	
continuous overcharge: (less than 1 year)	≤ 80 mA	no conspicuous deformation no leakage	
<b>internal resistance:</b> (impedance)	≤ 40 mΩ	at 1KHz battery fully charged	
<b>life expectancy:</b>	≥ 500 cycles	acc. IEC standard	
<b>self discharge</b>			
charge retention:	≥ 80 %	after 12 months storage at 20°C	
<b>initial capacity:</b>	≥ 550 mAh	within 30 days after delivery discharge at 0.2C	
<b>ambient temperature range:</b>	0...45 °C 10...40 °C - 20...65 °C - 20...50 °C - 20...40 °C - 20...30 °C	standard charge fast charge discharge storage (≤3months) storage (≤6months) storage (≤24months)	
QCT1:	20/750/45		
QCT2:	30/700/50		

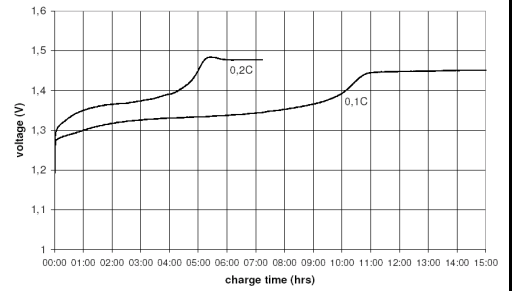
**mechanical specifications**

cell dimensions			
diameter d1:		10.5 - 0.7	mm
diameter d2:	max.	3.8	mm
height h1:		44.5 - 1.5	mm
height h2:	min.	0.8	mm
weight:		12.5 ± 2	g

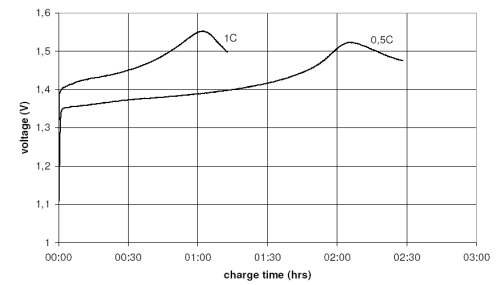


**Diagrams**

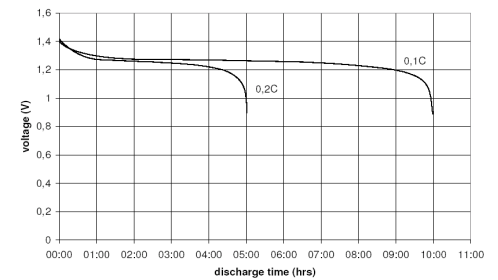
standard charge



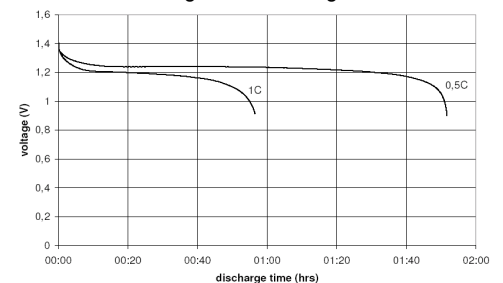
fast charge



low rate discharge



high rate discharge



	<b>ANSMANN Specifications for model:</b>	<b>NiMH Battery</b>
		<b>AAA - 900mAh low self discharge</b>
	data sheet no. / part no.	
	supplier no.	702069
	author / date	TG / 01.08.2018

## Looking for pricing, stock, or lifecycle information?

Click below to explore more details on WIN SOURCE:

- [View 5030512-XX on WIN SOURCE](#)
- [ANSMANN \(Huizhou\) Trading CO., LTD Information](#)

## Optimize Your Supply Chain with WIN SOURCE Solutions

- ✓ Global Sourcing Solution
- ✓ Obsolete Management
- ✓ Cost Control Management
- ✓ Shortage Management
- ✓ Alternative Solution
- ✓ Excess Inventory Management