



**THE DATASHEET OF**  
**1311-0028-XX**



**cell chemistry:** Li-Ion  
**cell size:** AAA (10430)  
**cell type:** round cell

**Conditions**

**nominal output voltage:** 1.5 V when SOC (state of charge) of battery is >10%  
 reduced output voltage: 1.05 V when SOC (state of charge) of battery is <10%

**capacity**  
 nominal: 500 mAh discharge at 0.2C  
 minimum: 400 mAh discharge at 0.2C  
 350 mAh discharge at 0.5C  
 ta: 20°C; EV(Discharge End Voltage): 0.9V

**discharge** ta: 0...45°C  
 max. continuous discharge current: 500 mA  
 nom. discharge current: 100 mA

**charge via type-C connector** (with USB charger)  
 supply voltage: 5 V ± 0.25V  
 charge current: 100 mA ± 10%  
 charge time: 2.75 h ± 0.5h

**external charge (at battery + / - poles)** is not allowed; charge battery via type-C connector only

internal resistance: n/a at 1kHz, sine wave measurement according to IEC 896-2

**built-in li-ion battery:** 3.7 V / 200mAh  
 energy: 0.74 Wh

**output protection functions**  
 overload cut-off current: 1 A ± 0.3A

**deep discharge protection function**  
 cut-off voltage of int. battery: 2.6 V ± 0.3V

**LED charge indicator** visible on the top side of the battery  
 flashes green during charge  
 lights green at end of charge (battery fully charged)



**life time expectance**  
 (C>70% of min. capacity) ≥ 1200 cycles at 0.2C charge/discharge rate

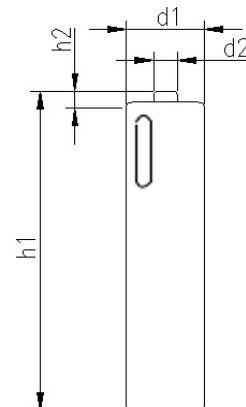
**self discharge:**  
 ≤ 2 %/month at 20°C  
 ≤ 5 %/month at 30°C  
 ≤ 10 %/month at 40°C

**ambient temperature range:**  
 0...45 °C charge  
 - 20...60 °C discharge  
 - 20...25 °C storage max. 1year  
 - 20...45 °C storage max. 3months

recommended SOC: 30...50 % for long-time storage  
 (SOC = state of charge)

**mechanical specifications**

cell dimensions (incl. sleeve)  
 diameter d1: 10.5 - 0.7 mm  
 diameter d2: 3.5 ± 0.5 mm  
 height h1: 44.5 - 1 mm  
 height h2: 1.3 ± 0.5 mm  
 weight: 7 ± 1 g



|  |  |                                     |
|--|--|-------------------------------------|
|  | <b>ANSMANN Specifications for model:</b> | <b>AAA (10430) Li-Ion Battery</b>   |
|  |  | <b>1.5V 500mAh w. type-C charge</b> |
|  | data sheet no. / part no.                | 1311-0028                           |
|  | s.n.                                     | 705163                              |
|  | author / date                            | TG / 29.01.2025                     |

## Looking for pricing, stock, or lifecycle information?

Click below to explore more details on WIN SOURCE:

- [View 1311-0028-XX on WIN SOURCE](#)
- [ANSMANN \(Huizhou\) Trading CO., LTD Information](#)

## Optimize Your Supply Chain with WIN SOURCE Solutions

- ✓ Global Sourcing Solution
- ✓ Obsolete Management
- ✓ Cost Control Management
- ✓ Shortage Management
- ✓ Alternative Solution
- ✓ Excess Inventory Management