



MMIC SURFACE MOUNT

Monolithic Amplifier

RAM-4+

Mini-Circuits

50Ω DC to 1 GHz

FEATURES

- Wideband, DC to 1 GHz
- Cascadable Ceramic Package
- Internally Matched to 50Ω
- Low Noise Figure, 6.5 dB Typ.
- Excellent Repeatability
- Aqueous Washable
- Protected Under US Patent 6,943,629



Generic photo used for illustration purposes only

CASE STYLE: AF190

+RoHS Compliant

The +Suffix identifies RoHS Compliance. See our website for methodologies and qualifications

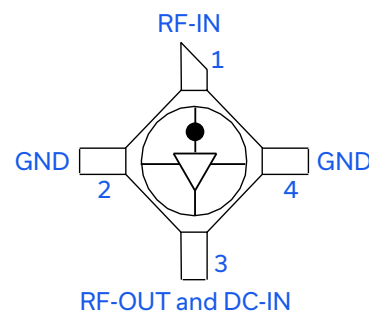
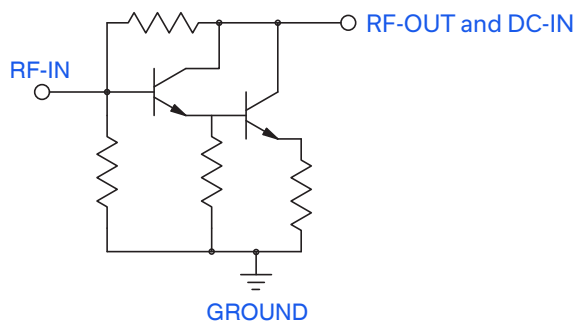
APPLICATIONS

- Cellular
- UHF/VHF
- Communication Systems
- Transmission Receivers

PRODUCT OVERVIEW

RAM-4+ (RoHS compliant) is a wideband amplifier offering high dynamic range. It has repeatable performance from lot to lot. It is enclosed in a ceramic surface-mount package. RAM-4+ uses Darlington configuration and is fabricated using InGaP HBT technology. Expected MTBF is 300 years at +100°C case temperature.

SIMPLIFIED SCHEMATIC AND PIN DESCRIPTION



Function	Pin Number	Description
RF-IN	1	RF input pin. This pin requires the use of an external DC blocking capacitor chosen for the frequency of operation.
RF-OUT and DC-IN	3	RF output and bias pin. DC voltage is present on this pin; therefore a DC blocking capacitor is necessary for proper operation. An RF choke is needed to feed DC bias without loss of RF signal due to the bias connection, as shown in "Recommended Application Circuit".
GND	2,4	Connections to ground. Use via holes as shown in "Suggested Layout for PCB Design" to reduce ground path inductance for best performance.

REV. E
ECO-024944
RAM-4+
MCL NY
250320





ELECTRICAL SPECIFICATIONS AT +25°C AND 50 mA UNLESS NOTED OTHERWISE

Parameter	Conditions (GHz)	Min.	Typ.	Max.	Units
Frequency Range ¹		DC		1	GHz
Gain	0.1 1	7.0 ²	8.5 8.0		dB
Input Return Loss	DC - 1		15.5		dB
Output Return Loss	DC - 1		10		dB
Output Power @ 1 dB Compression	1		+12.5		dBm
Output IP3	1		+25.5		dBm
Noise Figure	1		6.5		dB
Recommended Device Operating Current			50		mA
Device Operating Voltage			+5.25		V
Device Voltage Variation vs. Temperature at 50 mA			-2.2		mV/°C
Device Voltage Variation vs. Current at +25°C			23.0		mV/mA
Thermal Resistance, Junction-to-Case ³			140		°C/W

1. Guaranteed specification DC-1 GHz. Low frequency cut off determined by external coupling capacitors.

2. Full temperature range.

3. Case is defined as ground leads.

ABSOLUTE MAXIMUM RATINGS

Parameter	Ratings
Operating Temperature	-54°C to +100°C
Storage Temperature	-65°C to +150°C
Operating Current	100 mA
Power Dissipation	540 mW
Input Power	+13 dBm

Permanent damage may occur if any of these limits are exceeded. These ratings are not intended for continuous normal operation.



MMIC SURFACE MOUNT

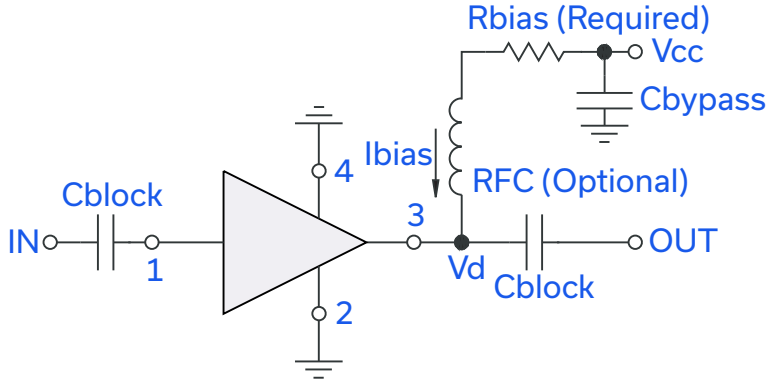
Monolithic Amplifier

RAM-4+

Mini-Circuits

50Ω DC to 1 GHz

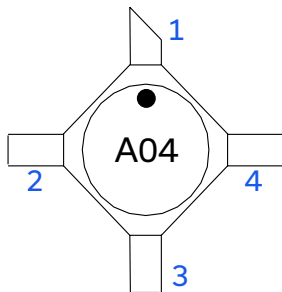
RECOMMENDED APPLICATION CIRCUIT



Test Board includes case, connectors, and components (in bold) soldered to PCB

R BIAS	
Vcc	"1%" Res. Values (Ohms) for Optimum Biasing
7	34.8
8	54.9
9	75
10	95.3
11	115
12	133
13	154
14	174
15	196

PRODUCT MARKING



Markings in addition to model number designation may appear for internal quality control purposes.





MMIC SURFACE MOUNT

Monolithic Amplifier

RAM-4+

Mini-Circuits

50Ω DC to 1 GHz

ADDITIONAL DETAILED TECHNICAL INFORMATION IS AVAILABLE ON OUR DASHBOARD. [CLICK HERE](#)

Performance Data & Graphs	Data Table Swept Graphs S-Parameter Data Set (.zip file)
Case Style	AF190 Ceramic surface-mount, 0.083 body diameter
Suggested Layout for PCB Design	PL-254
Evaluation Board	TB-414-4+
Environmental Ratings	ENV08T6

ESD RATING

Human Body Model (HBM): Class 1B (500 V to < 1,000 V) in accordance with ANSI/ESD STM 5.1 - 2001

Machine Model (MM): Class M1 (< 100 V) in accordance with ESD STM 5.2 - 1999



NOTES

- A. Performance and quality attributes and conditions not expressly stated in this specification document are intended to be excluded and do not form a part of this specification document.
- B. Electrical specifications and performance data contained in this specification document are based on Mini-Circuits' applicable established test performance criteria and measurement instructions.
- C. The parts covered by this specification document are subject to Mini-Circuits' standard limited warranty and terms and conditions (collectively, "Standard Terms"); Purchasers of this part are entitled to the rights and benefits contained therein. For a full statement of the standard terms and the exclusive rights and remedies thereunder, please visit Mini-Circuits' website at www.minicircuits.com/terms/viewterm.html



Looking for pricing, stock, or lifecycle information?

Click below to explore more details on WIN SOURCE:

-  [View RAM-4+ on WIN SOURCE](#)
-  [Mini-Circuits Information](#)

Optimize Your Supply Chain with WIN SOURCE Solutions

-  Global Sourcing Solution
-  Obsolete Management
-  Cost Control Management
-  Shortage Management
-  Alternative Solution
-  Excess Inventory Management