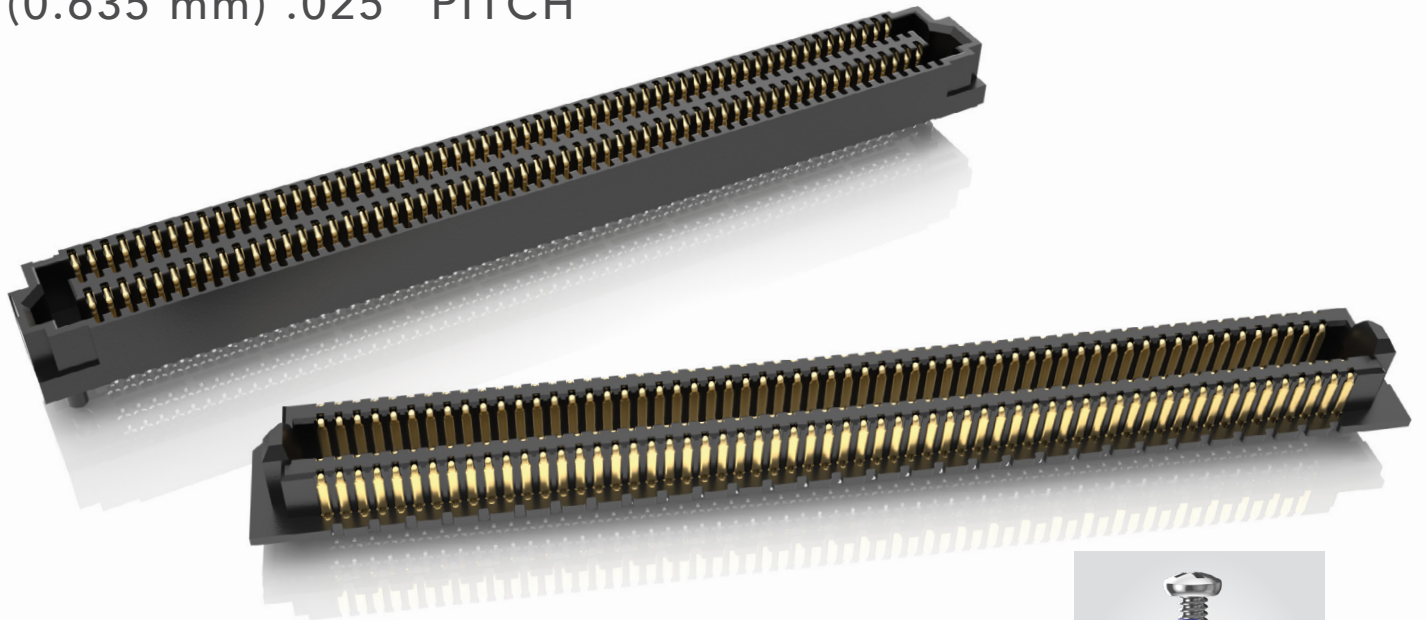


# ACCELERATE<sup>®</sup> HD

## HIGH-DENSITY SLIM BODY ARRAYS

(0.635 mm) .025" PITCH



### FEATURES & BENEFITS

- Up to 400 positions in a 4-row design
- 5 mm, 7 mm, 9 mm, 10 mm, 11 mm, 12 mm, 14 mm & 16 mm stack heights
- Slim 5 mm width body design
- Edge Rate<sup>®</sup> contact system optimized for signal integrity performance
- Open-pin-field for grounding and routing flexibility
- Supports 64 Gbps PAM4 (32 Gbps NRZ) applications
- PCIe<sup>®</sup> 6.0/CXL<sup>®</sup> 3.2 capable

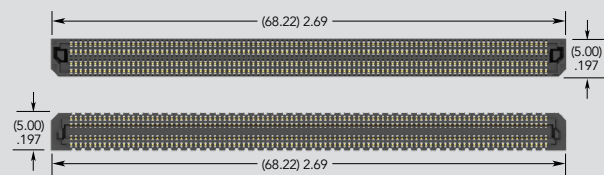
PAM4

64  
Gbps



SureWare<sup>™</sup> ultra rugged guide post standoffs available (GPSO)

### HIGHER DENSITY THAN PREVIOUS GENERATION STRIPS



ADM6/ADF6 Series (400 total positions)

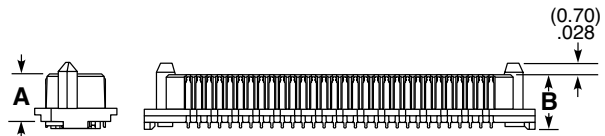
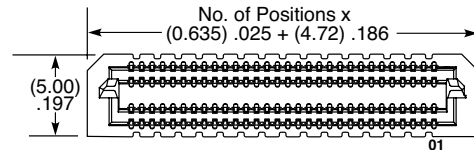
### KEY SPECIFICATIONS (ADM6/ADF6)

PITCH	TOTAL POSITIONS	INSULATOR MATERIAL	CONTACT MATERIAL	PLATING	OPERATING TEMP RANGE	CURRENT RATING	VOLTAGE RATING	LEAD-FREE SOLDERABLE
(0.635 mm) .025"	40 - 400	Black LCP	Copper Alloy	Au or Sn over 50 μm (1.27 μm) Ni	-55 °C to +125 °C	1.34 A per pin (4 pins powered)	155 VAC/219 VDC	Yes

PCI-SIG<sup>®</sup>, PCI Express<sup>®</sup> and the PCIe<sup>®</sup> design marks are registered trademarks and/or service marks of PCI-SIG.

**(0.635 mm) .025" PITCH • SLIM BODY OPEN-PIN-FIELD ARRAYS**

SERIES	NO. OF POSITIONS	LEAD STYLE	PLATING OPTION	NO. OF ROWS	0	OPTION	"X"R
<b>ADM6</b> Terminal	-10, -20, -30, -40, -50, -60, -70, -80, -90, -100 (per row)	<b>-01.5</b> = 1.5 mm (ADM6 only)	<b>-L</b> = 10 μ" (0.25 μm) Gold on contact area, Matte Tin on tail	<b>-4</b> = Four Rows		(Leave blank for no alignment pin)	<b>-TR</b> = Tape & Reel
<b>ADF6</b> Socket		<b>-03.5</b> = 3.5 mm				<b>-A</b> = Alignment Pin	<b>-FR</b> = Full Reel Tape & Reel (must order max. quantity per reel; contact Samtec for quantity breaks)
		<b>-06.5</b> = 6.5 mm (ADM6 only)					
		<b>-07.5</b> = 7.5 mm (ADF6 only)					
		<b>-08.5</b> = 8.5 mm (ADM6 only)					

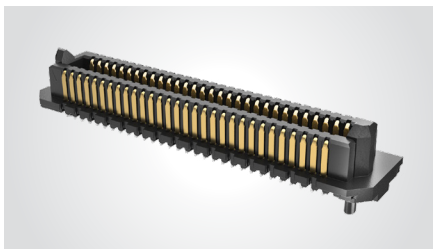


LEAD STYLE	A	B
-01.5	(2.90) .114	(3.32) .131
-03.5	(4.90) .193	(5.32) .209
-06.5	(7.90) .311	(8.32) .328
-08.5	(9.90) .390	(10.32) .406

**ADM6**

Board Mates:  
ADF6

Standoffs:  
JSO, GPSO



**ALSO AVAILABLE**  
Contact Samtec

Other platings

View complete specifications at: [samtec.com?ADM6](http://samtec.com?ADM6)

**MATED HEIGHTS \***

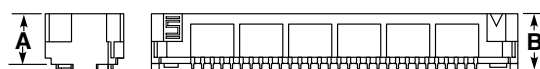
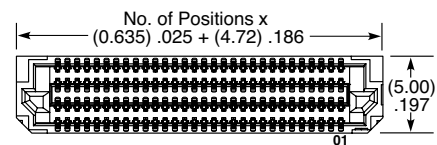
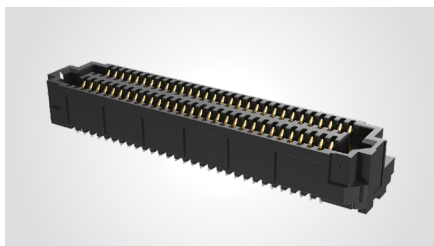
ADF6 LEAD STYLE	ADM6 LEAD STYLE			
	-01.5	-03.5	-06.5	-08.5
-03.5	(5 mm) .197"	(7 mm) .276"	(10 mm) .394"	(12 mm) .472"
-07.5	(9 mm) .354"	(11 mm) .433"	(14 mm) .551"	(16 mm) .630"

\* Processing conditions will affect mated height.

**ADF6**

Board Mates:  
ADM6

Standoffs:  
JSO, GPSO



LEAD STYLE	A	B
-03.5	(3.23) .127	(3.65) .144
-07.5	(7.23) .285	(7.65) .301



**Notes:**

Some sizes, styles and options are non-standard, non-returnable

View complete specifications at: [samtec.com?ADF6](http://samtec.com?ADF6)

## Looking for pricing, stock, or lifecycle information?

Click below to explore more details on WIN SOURCE:

-  [View ADM6-10-03.5-L-4-0-A-TR on WIN SOURCE](#)
-  [Samtec Inc. Information](#)

## Optimize Your Supply Chain with WIN SOURCE Solutions

-  Global Sourcing Solution
-  Obsolete Management
-  Cost Control Management
-  Shortage Management
-  Alternative Solution
-  Excess Inventory Management