



**THE DATASHEET OF
KSC341J LFS**



KSC3 Series

Sealed Tactile Switch for SMT 6.2 x 6.2 mm,
with 3.5 mm Height Hard Actuator



Specifications

Function	Momentary action
Contact Arrangement	1 make contact = SPST, N.O.
Terminals	J bend & Gullwing type for SMT
Sealing	IP67

Electrical Characteristics

Dielectric Strength (50 Hz, 1 min.)	≥ 250 Vrms	
Contact Resistance	≤ 100mΩ	
Insulation Resistance (100 V)	≥ 1000 M Ω	
Bounce Time	≤ 1 ms	
	Silver	Gold
Maximum Power	1 VA	0.2 VA
Maximum Voltage	32 VDC	32 VDC
Minimum Voltage	20 mV	20 mV
Maximum Current	50 mA	10 mA
Minimum Current	1 mA	0.1 mA

Description

The KSC3 series sealed tactile switches for SMT are designed for small applications and products. Their positive adaptable tactile feeling is perfect for industrial, automotive and consumer applications, such as mobile phones and car door handles. KSC3 switches are IP67 rated, 3.5mm high hard actuator tactile switches.

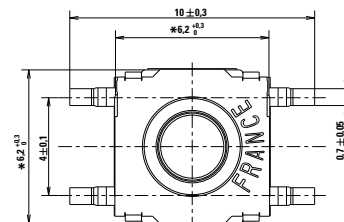
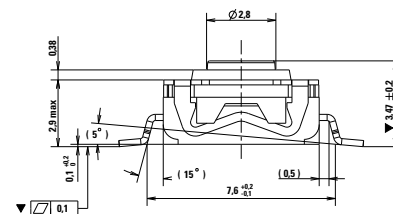
Features & Benefits

- Positive adaptable tactile feeling
- Hard actuator 3.5mm high
- IP67

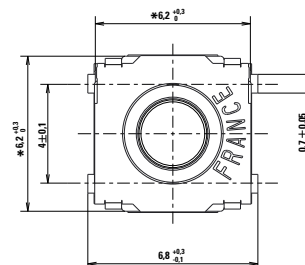
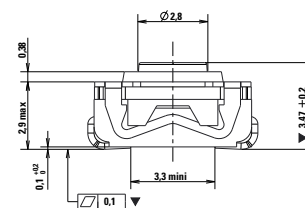
Applications

- Industrial electronics
- Consumer products
- Transportation
- Medical

Dimensions (mm) J Termination



Dimensions (mm) G Termination

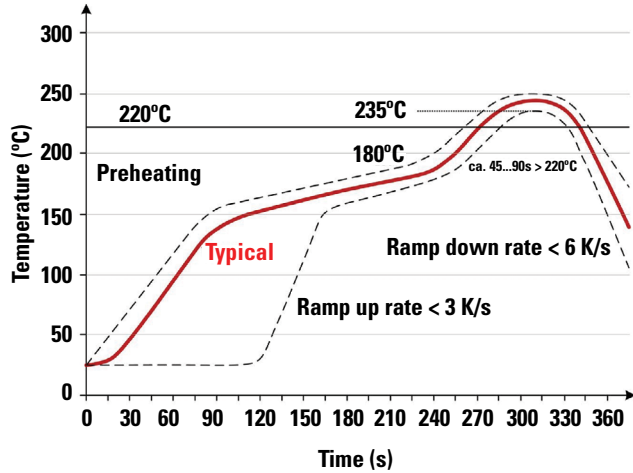


KSC3 Series

Sealed Tactile Switch for SMT 6.2 x 6.2 mm,
with 3.5 mm Height Hard Actuator



Soldering Profile

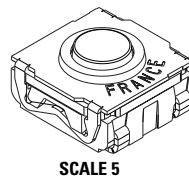
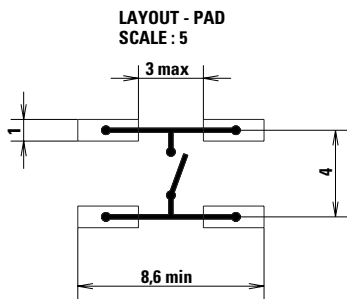


Note: Up to 2 reflow cycles in accordance with the above temperature profile

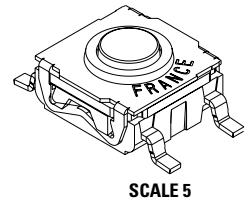
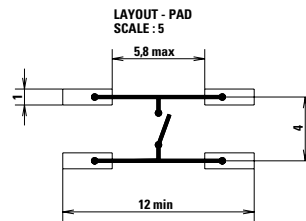
Soldering process: Depending on the application, this component is suited to the following methods:

- Terminals being silver or gold plated over a nickel barrier, the use of slightly activated flux is suitable.
- Lead free soldering process in accordance with the definition on the left.

J Terminations (mm)



G Terminations (mm)

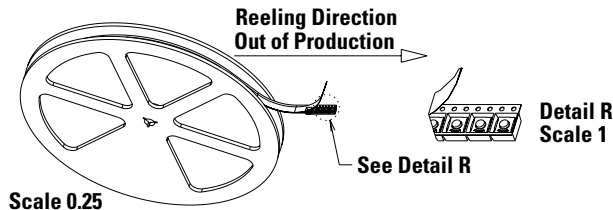


KSC3 Series

Sealed Tactile Switch for SMT 6.2 x 6.2 mm, with 3.5 mm Height Hard Actuator



Tape & Reel

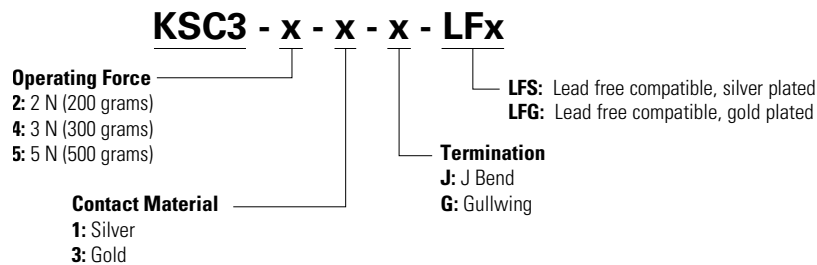


Packaging Details

Type	Tape & reel
Number of Parts in Packaging	2,000
Other Information	Tape and reel per EIA 481, External diameter 330 ± 2 mm
Transport Conditions	According to specification NF H00-060

Ordering Number

Our easy build-a-switch concept allows you to mix and match options to create the switch you need. To order, select desired option from each category and place it in the appropriate box. However, please note that all the combinations of these options are not feasible. For any part number different from those listed above, please consult your local representative.



Mechanical Characteristics

Supply status	Littelfuse Orderable Part Number	Description	Contact & Terminals Plating	Terminals	Operating Force Fa (Newton)	Tactile ratio (Min)	Operating Life (operations)	Electrical Travel (mm)
✓	Y31B11113FPLFS	KSC321J LFS	Silver	J	2±0.4	Min 15%	300,000	0.2+0.3/0
✓	Y31B11117FPLFS	KSC321G LFS	Silver	G	2±0.4	Min 15%	300,000	0.2+0.3/0
✓	Y31B13113FPLFG	KSC323J LFG	Gold	J	2±0.4	Min 15%	300,000	0.2+0.3/0
✓	Y31B13117FPLFG	KSC323G LFG	Gold	G	2±0.4	Min 15%	300,000	0.2+0.3/0
✓	Y31B31117FPLFS	KSC331G SPECIAL DELTA LFS	Silver	G	3.4±0.4	Min 25%	100,000	0.2+0.3/0
✓	Y31B41113FPLFS	KSC341J LFS	Silver	J	3±0.75	Min 15%	300,000	0.2+0.3/0
✓	Y31B41117FPLFS	KSC341G LFS	Silver	G	3±0.75	Min 15%	300,000	0.2+0.3/0
✓	Y31B43113FPLFG	KSC343J LFG	Gold	J	3.3±0.85	Min 15%	300,000	0.2+0.3/0
✓	Y31B43117FPLFG	KSC343G LFG	Gold	G	3.3±0.85	Min 15%	300,000	0.2+0.3/0
✓	Y31B51113FPLFS	KSC351J LFS	Silver	J	5±1	Min 25%	100,000	0.2+0.3/0
✓	Y31B51117FPLFS	KSC351G LFS	Silver	G	5±1	Min 25%	100,000	0.2+0.3/0
✓	Y31B53113FPLFG	KSC353J LFG	Gold	J	5±1	Min 25%	100,000	0.2+0.3/0
✓	Y31B53117FPLFG	KSC353G LFG	Gold	G	5±1	Min 25%	100,000	0.2+0.3/0

Notes: Supply status: ✓ : Available for ordering.

Liability Limitation

This datasheet does not provide enough information for applications that require a certain level of quality or safety such as automotive, medical systems, or safety equipment. Please contact customer service for the contractual specification package.

Disclaimer Notice - Information furnished is believed to be accurate and reliable. However, users should independently evaluate the suitability of and test each product selected for their own applications. Littelfuse products are not designed for, and may not be used in, all applications. Read complete Disclaimer Notice at <http://www.littelfuse.com/disclaimer-electronics>.

Looking for pricing, stock, or lifecycle information?

Click below to explore more details on WIN SOURCE:

 [View KSC341J LFS](#) on WIN SOURCE

 [C&K Components](#) Information

Optimize Your Supply Chain with WIN SOURCE Solutions

-  Global Sourcing Solution
-  Obsolete Management
-  Cost Control Management
-  Shortage Management
-  Alternative Solution
-  Excess Inventory Management