



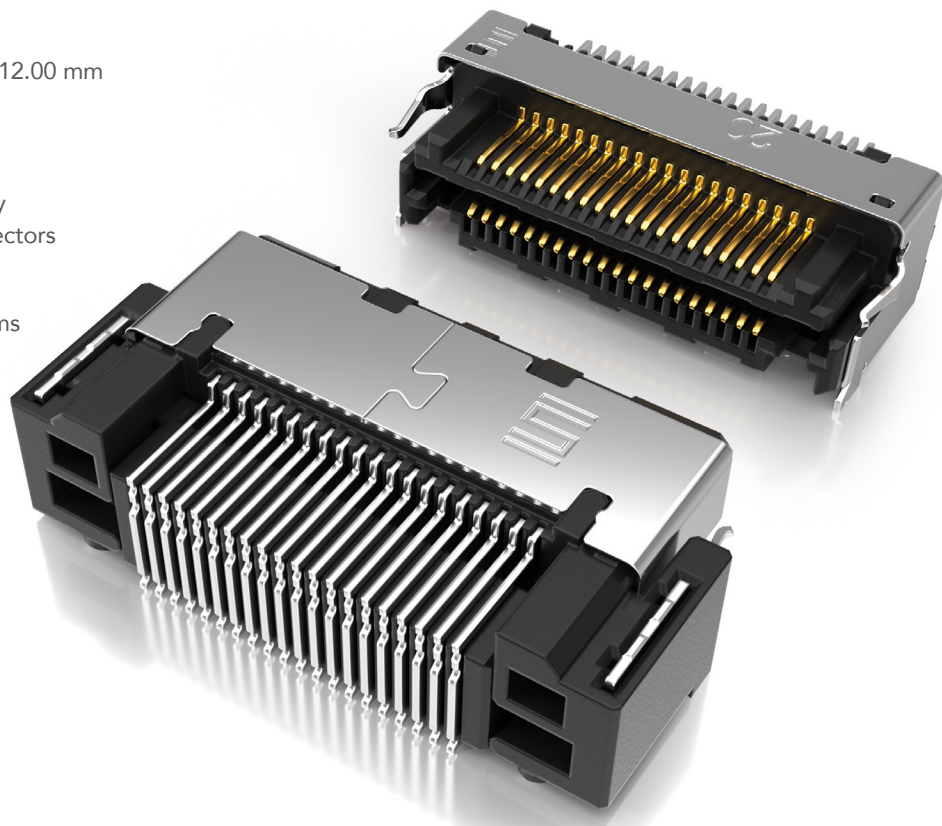
# FINE PITCH SELF MATING CONNECTORS

0.50 mm, 0.635 mm and 0.80 mm PITCH

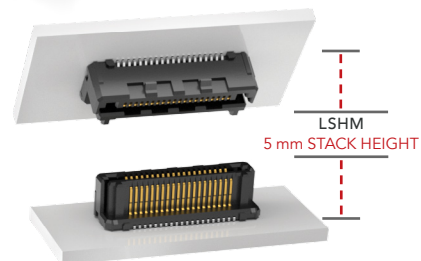
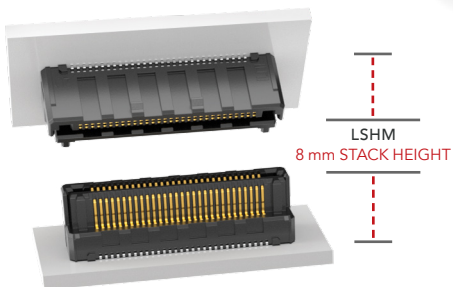
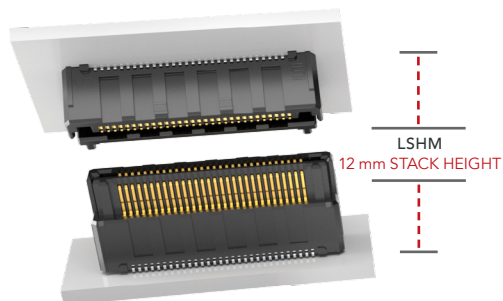
## FEATURES & BENEFITS

- Ten stack height options from 5.00 mm to 12.00 mm
- 0.50 mm, 0.635 mm or 0.80 mm pitches
- Audible click when mated
- Mating and unmating forces approximately 4-6x greater than typical micro pitch connectors
- Self-mating system reduces inventory cost
- Parallel, perpendicular and coplanar systems
- Shielded and lubricated options
- Severe Environment Testing qualified (LSHM); aligns with MIL-DTL-55302.

Visit [samtec.com/set](http://samtec.com/set)



## SLIM BODY DESIGNS (40 total positions each)



## KEY SPECIFICATIONS

INSULATOR MATERIAL	CONTACT MATERIAL	PLATING	OPERATING TEMP RANGE	CURRENT RATING	VOLTAGE RATING	SMT COPLANARITY	LEAD-FREE SOLDERABLE
Black LCP	Phosphor Bronze	Au or Sn over 50 μ" (1.27 μm) Ni	-55 °C to +125 °C	LSHM: 2.0 A per pin LSS: 1.7 A per pin LSEM: 1.8 A per pin	LSHM: 160 VAC/226 VDC LSS: 300 VAC/424 VDC LSEM: 225 VAC/318 VDC	(0.10 mm) .004" max	Yes

**(0.50 mm) .0197" PITCH • RUGGED HERMAPHRODITIC CONNECTORS**

**LSHM** - **1** **NO. PINS PER ROW** - **LEAD STYLE** - **PLATING OPTION** - **TAIL OPTION** - **A** - **SHIELD OPTION** - **K** - **"X"R**

**05, 10, 20,  
30, 40, 50**

(Vertical)  
**Specify  
LEAD  
STYLE  
from  
chart**

**-F**  
= Gold flash  
on contact,  
Matte Tin on tail

**-DV**  
= Vertical

**-S**  
= With  
Shield

**-K**  
= (3.50 mm)  
.138" DIA  
Polyimide  
film Pick &  
Place Pad

**-TR**  
= Tape &  
Reel

**LSHM**

**Board Mates:**

**LSHM**

**Cable Mates:**

**HLCD**

(Right-angle)

**-01**

= Standard

(Right-angle)

**-L1**

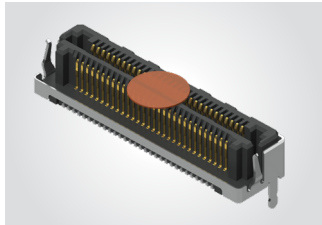
= Lubricated

**-L**  
= 10 μ" (0.25 μm)  
Gold on contact,  
Matte Tin on tail

**-DH**  
= Right-angle  
(Lead style -01  
& -L1 only)

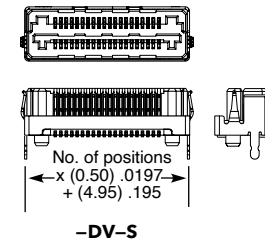
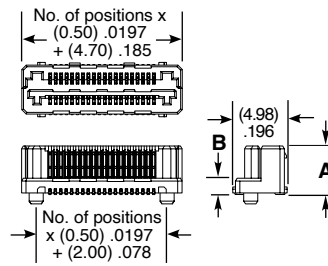
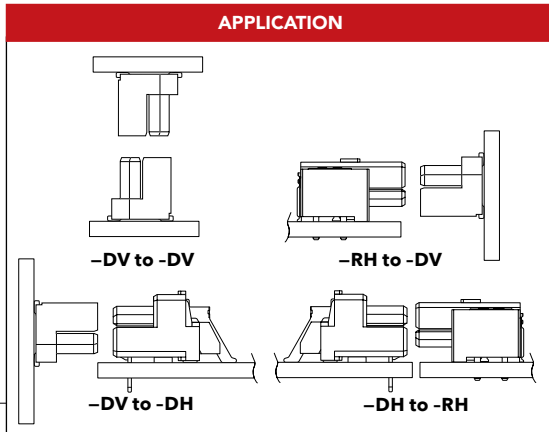
**-N**  
= Without  
Shield

**-FR**  
= Full Reel  
Tape & Reel  
(must order  
maximum  
quantity  
per reel;  
contact  
Samtec for  
quantity  
breaks)

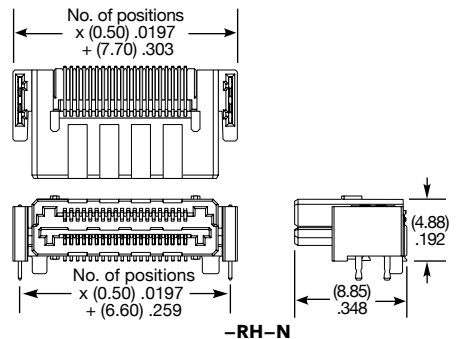
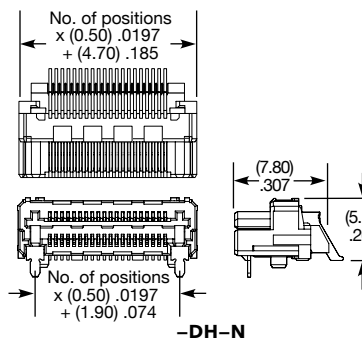
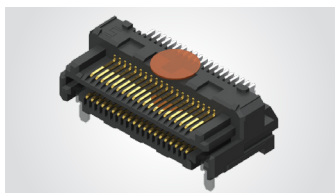
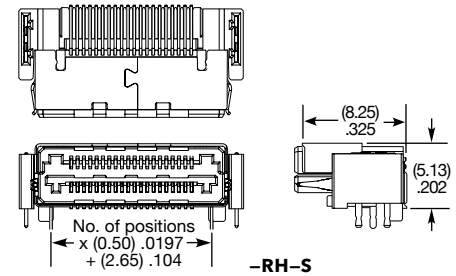
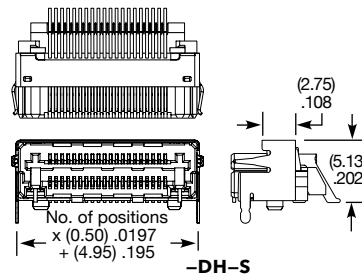
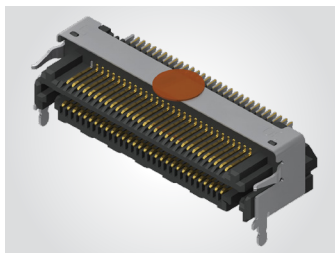


LEAD STYLE	MATED HEIGHT *
-02.5 & -02.5	(5.00) .196
-02.5 & -03.0	(5.50) .217
-03.0 & -03.0	(6.00) .236
-02.5 & -04.0	(6.50) .256
-03.0 & -04.0	(7.00) .276
-04.0 & -04.0	(8.00) .315
-02.5 & -06.0	(8.50) .335
-03.0 & -06.0	(9.00) .354
-04.0 & -06.0	(10.00) .394
-06.0 & -06.0	(12.00) .472

\*Processing conditions will affect mated height.



LEAD STYLE (STANDARD)	LEAD STYLE (LUBRICATED)	A	B
-02.5	-L2.5	(3.95) .156	(1.00) .039
-03.0	-L3.0	(4.45) .175	(1.50) .059
-04.0	-L4.0	(5.45) .215	(2.50) .098
-06.0	-L6.0	(7.45) .293	(4.50) .177



**Notes:**  
Severe Environment Testing qualified; aligns with MIL-DTL-55302. Visit [samtec.com/set](http://samtec.com/set)

Some lengths, styles and options are non-standard, non-returnable.

View complete specifications at: [samtec.com?LSHM](http://samtec.com?LSHM)

## Looking for pricing, stock, or lifecycle information?

Click below to explore more details on WIN SOURCE:

- [View LSHM-150-L2.5-L-DV-A-N-K-TR on WIN SOURCE](#)
- [Samtec Inc. Information](#)

## Optimize Your Supply Chain with WIN SOURCE Solutions

- ✓ Global Sourcing Solution
- ✓ Obsolete Management
- ✓ Cost Control Management
- ✓ Shortage Management
- ✓ Alternative Solution
- ✓ Excess Inventory Management