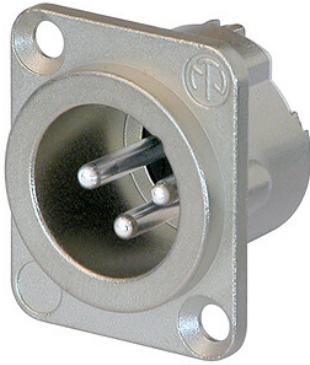




**THE DATASHEET OF
NC3MD-LX-HA**





NC3MD-LX-HA

3 pole male receptacle, crimp termination (Standard B-Crimp), Nickel housing, silver contacts

The DLX series features a compact all metal housing with an ingenious duplex ground contact, which offers excellent RF protection and shielding. It is the ideal match for mating with Neutrik's EMC XLR cable connector.

Features & Benefits

- ✓ All metal housing offers best overall RF protection and electromagnetic shielding
- ✓ Crimp termination with standard B-crimp tool (B-crimp acc. IEC 60352-2)
- ✓ Gastight and Solderless connection (RoHS compliant)
- ✓ New duplex ground contact for excellent contact integrity between chassis and cable connector
- ✓ Male connector's retention bar replaces plastic design with all metal version improving pull-out force
- ✓ Optional connection to easily join pin1 to chassis ground
- ✓ D-style housing provides installation compatibility with industry standard D mounting dimensions

Technical Information

Product	
Title	NC3MD-LX-HA
Connection Type	XLR
Gender	male

Electrical

Capacitance between contacts	$\leq 4 \text{ pF}$
Contact resistance	$\leq 5 \text{ m}\Omega$
Dielectric strength	1,5 kVdc
Insulation resistance	$> 10 \text{ G}\Omega$ (initial)
Rated current per contact	1 A
Rated voltage	$< 50 \text{ V}$

Mechanical

Insertion force	$\leq 20 \text{ N}$
Withdrawal force	$\leq 20 \text{ N}$
Lifetime	> 1000 mating cycles
Wiresize	0.22 - 0.34 mm ²
Wiresize	24 - 22 AWG
Wiring	Crimp contacts
Locking device	Latch lock
Chassis shape	D

Material

Contact plating	1 μm Ag
Contacts	Brass (CuZn35Pb2)
Insert	Polyamide (PA66)
Locking element	Steel Ck67
Shell	Zinc diecast (ZnAl4Cu1)
Shell plating	Nickel

Environmental	
Flammability	UL 94 V-0
Standard compliance	IEC 61076-2-103
Protection class	IP 40
Temperature range	-30 °C to +80 °C

Looking for pricing, stock, or lifecycle information?

Click below to explore more details on WIN SOURCE:

 [View NC3MD-LX-HA on WIN SOURCE](#)

 [Neutrik Information](#)

Optimize Your Supply Chain with WIN SOURCE Solutions

-  Global Sourcing Solution
-  Obsolete Management
-  Cost Control Management
-  Shortage Management
-  Alternative Solution
-  Excess Inventory Management