





# SERIES LA SWITCHES

## PUSHBUTTON SWITCHES - SEALED ILLUMINATED



### SPECIFICATIONS

Contact Rating:	5A @ 250 VAC 8A @ 125 VAC .2A @ 250 VDC 6A @ 24 VDC
Life Expectancy (Mechanical):	≥ 100,000 cycles
Life Expectancy (Electrical):	≥ 50,000 cycles
Contact Resistance:	100mΩ max. typical; initial @ 2-4 VDC
Insulation Resistance:	> 1,000MΩ
Dielectric Strength:	> 1,500 volts 1 minute > 3,000 volts between poles
Actuation Force:	300g / pole
Operating Temperature:	-20°C to 55°C
Degree of Protection:	IP65

### FEATURES & BENEFITS

- ▶ Modular interface/contact block design
- ▶ Robust product for industrial applications
- ▶ Attractive front panel design
- ▶ Illuminated options available

### APPLICATIONS/MARKETS

- ▶ Industrial controls
- ▶ Instrumentation
- ▶ Transportation
- ▶ Telecommunications

### MATERIALS

Switch Housing:	Polyetherimide (PEI)
Contact Housing:	Diallyl Phthalate (DAP)
Actuator Ring:	Polycarbonate (PC)
Lens:	Polycarbonate (PC)
Contacts:	Silver plated copper alloy
Terminals:	Silver plated copper alloy



### HOW TO ORDER

SERIES LA	TERMINATION	MECHANICAL CONFIGURATION	PUSHBUTTON HEAD	CIRCUIT	LAMP TYPE & VOLTAGE	LAMP COLOR (WHERE APPLICABLE)	LENS COLOR
	S = Solder Lug  K = Socket  P = Pilot Indicator	EE = Latching  OA = Momentary  PL* = Pilot Indicator  *For LAP (Pilot Indicator)	U1 = Ø29mm  V1 = Ø25mm  U3* = Ø35mm  V3* = Ø29mm  *Flush Mount	0* = Pilot Ind. 1**= SPDT 2 = DPDT 3 = 3PDT 4 = 4PDT  *For LAP (Pilot Indicator only)  **LAK available SPDT only	0 = None A B C F     Red G     Grn  H     Red J     Grn K     Yel  M N L D E		RED= Red GRN= Green BLU= Blue WHT= White ORG= Orange YEL= Yellow



### Example Ordering Number

LA-S-EE-U1-1-0-RED

Specifications subject to change without notice 10.28.19

### LAMP TYPE & VOLTAGE OPTIONS

0	:	Without lamp
A	:	Incandescent 6 V AC/DC 200 mA
B	:	Incandescent 14 V AC/DC 80 mA
C	:	Incandescent 28 V AC/DC 40 mA
D	:	Incandescent 48 V AC/DC 25 mA
E	:	Incandescent 60 V AC/DC 20 mA
F	:	Neon 110 V AC green/red
G	:	Neon 220 V AC green/red

### LAMP TYPE & VOLTAGE OPTIONS

H	:	LED 6 V DC green/yellow/red
J	:	LED 12 V DC green/yellow/red
K	:	LED 24 V DC green/yellow/red
L	:	Incandescent 33 V AC/DC 35 mA
N	:	Incandescent 14 V AC/DC 40 mA
M	:	Incandescent 6 V AC/DC 40 mA

# SERIES LA SWITCHES

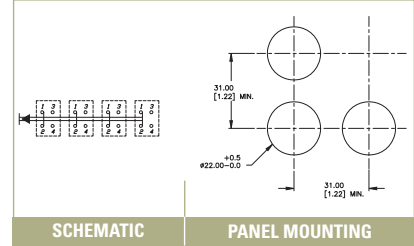
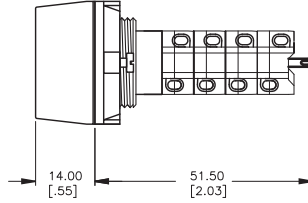
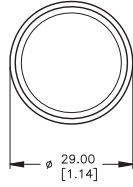
## PUSHBUTTON SWITCHES - SEALED ILLUMINATED

### TERMINATION & PUSHBUTTON HEAD OPTIONS

#### LAS

SOLDER LUG

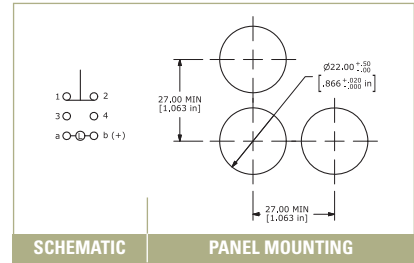
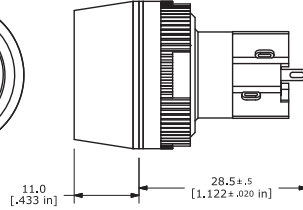
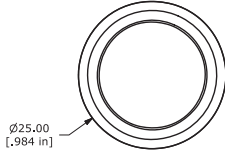
U1 Ø29mm



SCHEMATIC

PANEL MOUNTING

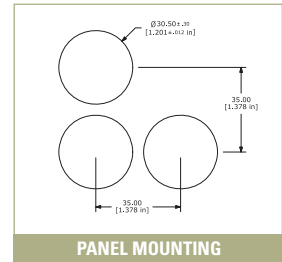
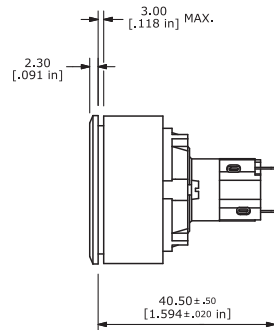
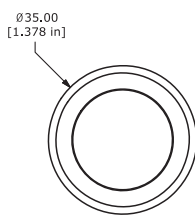
V1 Ø25mm



SCHEMATIC

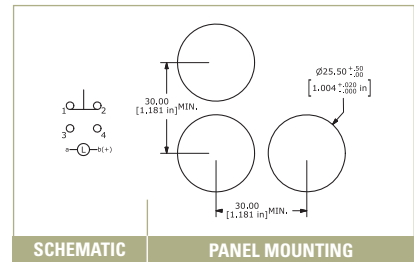
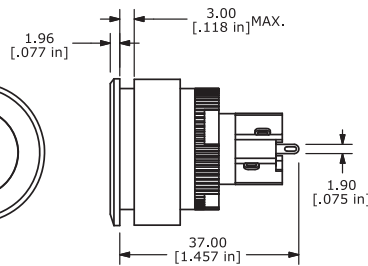
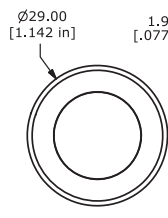
PANEL MOUNTING

U3



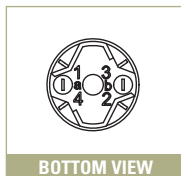
PANEL MOUNTING

V3



SCHEMATIC

PANEL MOUNTING



BOTTOM VIEW

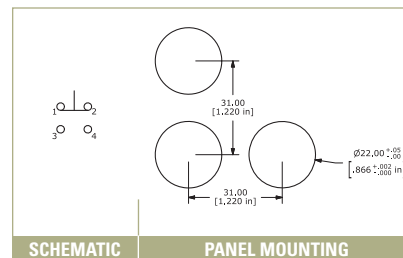
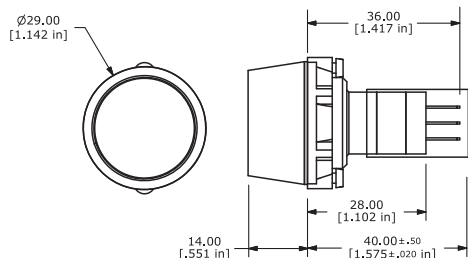
	Mounting Length (A)
SPDT	29.0 mm
DPDT	36.5 mm
3PDT	44.0 mm
4PDT	51.5 mm

# TERMINATION & PUSHBUTTON HEAD OPTIONS

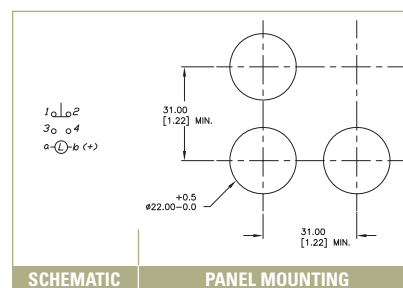
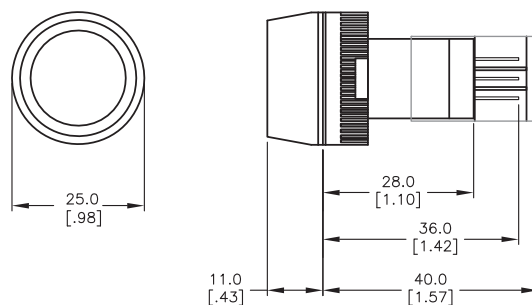
## LAK

SOCKET

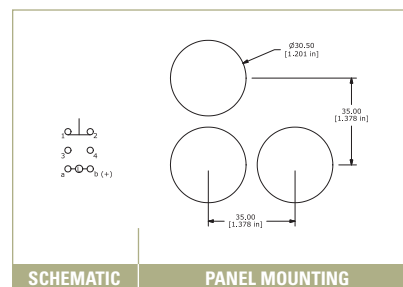
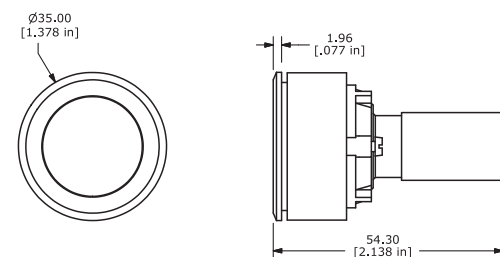
**U1** Ø29mm



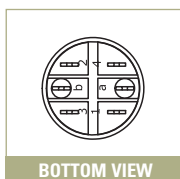
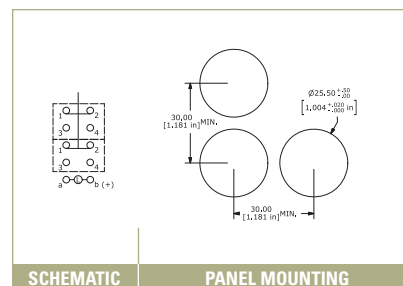
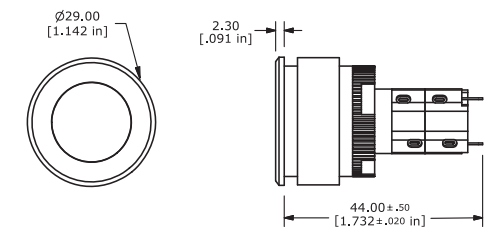
**V1** Ø25mm



**U3**



**V3**



TACT SWITCHES

NAVIGATION SWITCHES

PUSHBUTTON SWITCHES

TOGGLE SWITCHES

ROCKER SWITCHES

SLIDE SWITCHES

SNAP-ACTION SWITCHES

DIP SWITCHES

KEYLOCK SWITCHES

ROTARY SWITCHES

DETECTOR SWITCHES

CAP OPTIONS

# SERIES LA SWITCHES

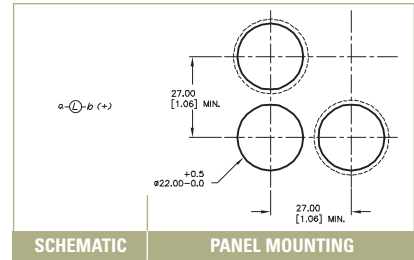
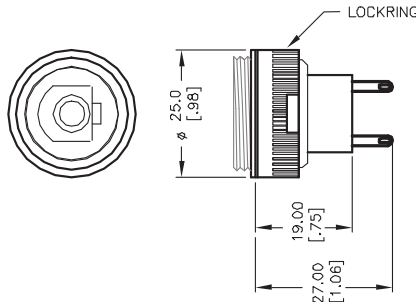
PUSHBUTTON SWITCHES - SEALED ILLUMINATED

## TERMINATION & PUSHBUTTON HEAD OPTIONS

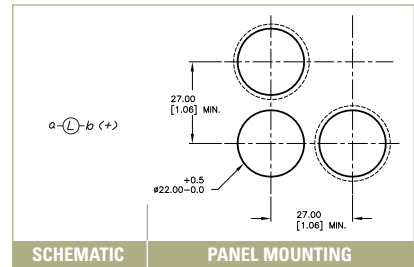
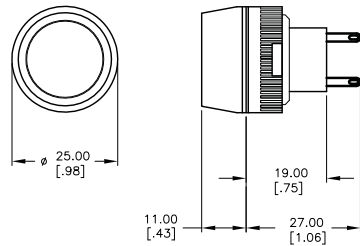
### LAP

PILOT INDICATOR

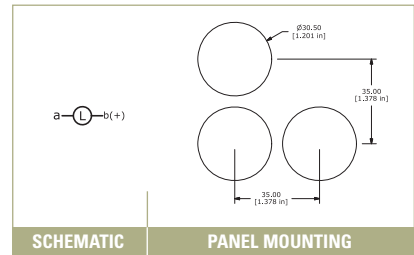
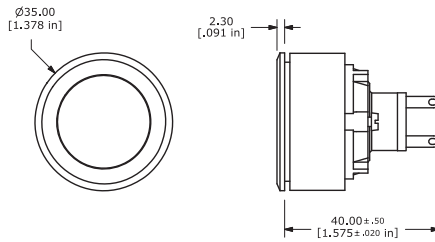
U1 Ø29mm



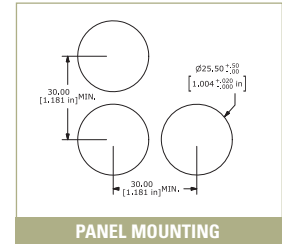
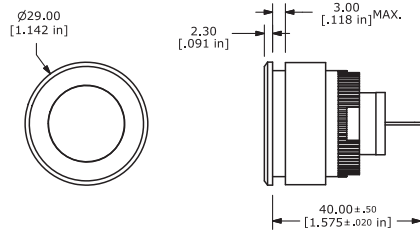
V1 Ø25mm



U3



V3



## MECHANICAL CONFIGURATION & CIRCUIT OPTIONS

### 0 PILOT INDICATOR

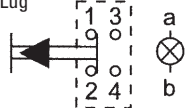
Available LAS Pilot Indicator



SCHEMATIC

### 1 SPDT

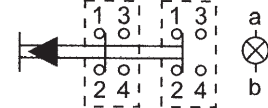
Available for LAK Socket Type and LAS Solder Lug



SCHEMATIC

### 2 DPDT

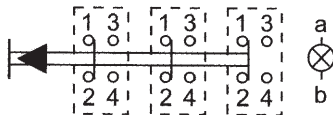
Available for LAS Solder Lug



SCHEMATIC

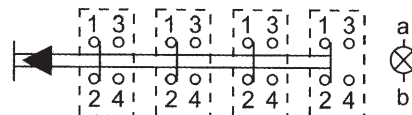
### 3 3PDT

Available for LAS Solder Lug



SCHEMATIC

### 4 4PDT



SCHEMATIC

### Mechanical Configuration Code

EE	Latching
OA	Momentary
PL	Pilot Indicator

## Looking for pricing, stock, or lifecycle information?

Click below to explore more details on WIN SOURCE:

 [View LASOAU110RED](#) on WIN SOURCE

 [E-SWITCH](#) Information

## Optimize Your Supply Chain with WIN SOURCE Solutions

-  Global Sourcing Solution
-  Obsolete Management
-  Cost Control Management
-  Shortage Management
-  Alternative Solution
-  Excess Inventory Management