

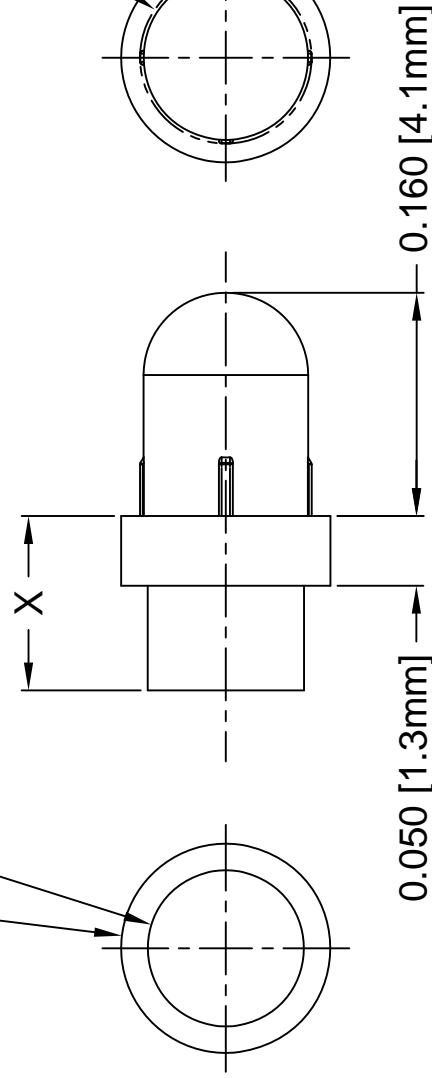


THE DATASHEET OF PLP1-200

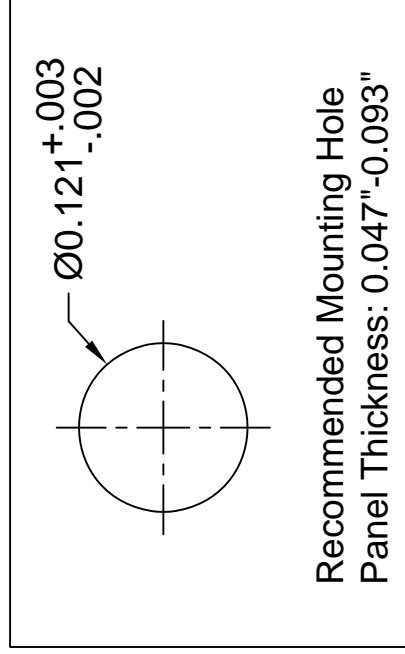


Part No.	X = Body Length
PLP1-100	0.100 (2.5mm)
PLP1-125	0.125 (3.2mm)
PLP1-175	0.175 (4.4mm)
PLP1-188	0.188 (4.8mm)
PLP1-200	0.200 (5.1mm)
PLP1-250	0.250 (6.4mm)
PLP1-313	0.313 (7.9mm)
PLP1-350	0.350 (8.9mm)
PLP1-375	0.375 (9.5mm)
PLP1-460	0.460 (11.7mm)
PLP1-500	0.500 (12.7mm)
PLP1-625	0.625 (15.9mm)
PLP1-750	0.750 (19.0mm)
PLP1-3MM	3mm (0.118")
PLP1-4MM	4mm (0.157")
PLP1-5MM	5mm (0.197")
PLP1-6MM	6mm (0.236")
PLP1-7MM	7mm (0.276")
PLP1-8MM	8mm (0.315")
PLP1-9MM	9mm (0.354")
PLP1-10MM	10mm (0.394")

Ø0.150 [Ø3.8mm]
FLANGE
Ø0.112 [Ø2.8mm]



**BODY LENGTHS FOR CLEAR
LIGHT PIPES.**



**Recommended Mounting Hole
Panel Thickness: 0.047"-0.093"**

2. MATERIAL: POLYCARBONATE, 94V-0, CLEAR.
1. GENERAL SPECIFICATIONS: BIVAR MOLDED COMPONENT SPECIFICATION BV00-E101 and BS5MC-1001.

REV.	DESCRIPTION
P	Added Panel Thickness
Q	Added .100", .188", .313"
R	Added Metric Lengths
T	Added Color Options.
U	Updated Color Options

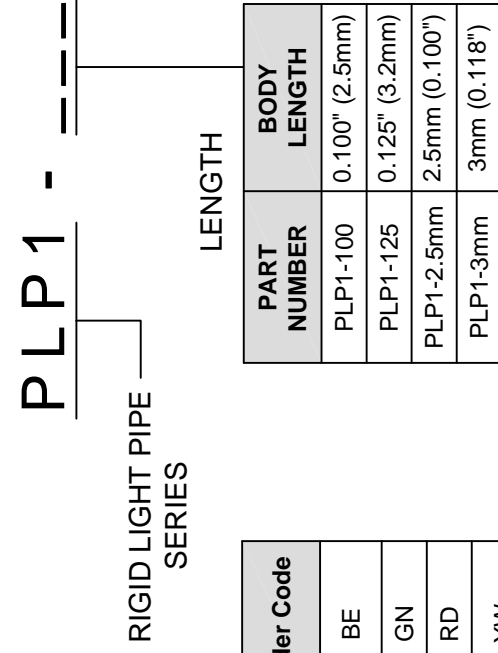
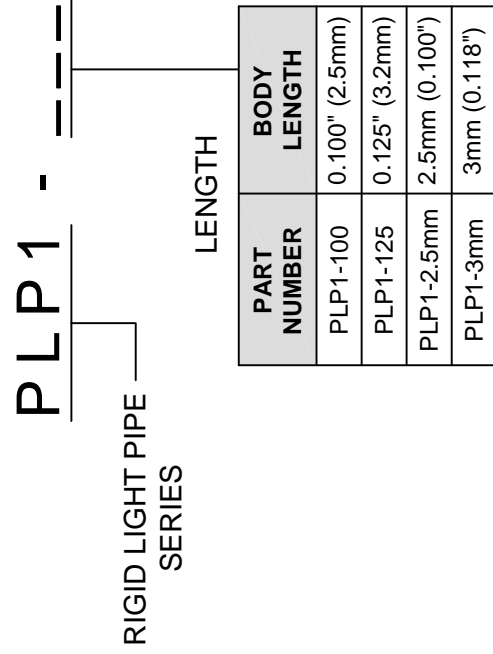
STANDARD TOLERANCES (UNLESS OTHERWISE SPECIFIED)		ANGULAR	POSITION
DECIMALS	FRACTIONS		
.X	±.1	X°	⊕
.XX	±.01		
.XXX	±.005		
DESIGNED:	M. CHEN	DATE:	01/11/07
REVISION:	K. BARON	DATE:	07/07/07
CHECKED:	TD. NGUYEN	DATE:	07/07/07

OTHER AVAILABLE COLORS

* SEE TABLE FOR ORDERING INFORMATION

REV.	SEE SHEET #1

AVAILABLE COLOR OPTIONS



COLOR	Order Code
TINTED BLUE	BE
TINTED GREEN	GN
TINTED RED	RD
TINTED YELLOW	YW

Looking for pricing, stock, or lifecycle information?

Click below to explore more details on WIN SOURCE:

 [View PLP1-200 on WIN SOURCE](#)

 [Bivar Inc. Information](#)

Optimize Your Supply Chain with WIN SOURCE Solutions

-  Global Sourcing Solution
-  Obsolete Management
-  Cost Control Management
-  Shortage Management
-  Alternative Solution
-  Excess Inventory Management