



**THE DATASHEET OF  
PTV27B-M3/84A**



## Surface Mount Power Voltage-Regulating Diodes

### eSMP® Series


**SMP (DO-220AA)**

Anode Cathode


**RoHS**  
 COMPLIANT  
 HALOGEN  
**FREE**

### FEATURES

- Very low profile - typical height of 1.0 mm
- Ideal for automated placement
- Low Zener impedance
- Meets MSL level 1, per J-STD-020, LF maximum peak of 260 °C
- Material categorization: for definitions of compliance please see [www.vishay.com/doc?99912](http://www.vishay.com/doc?99912)

### TYPICAL APPLICATIONS

For general purpose regulation, industrial, and protection applications.

### MECHANICAL DATA

**Case:** SMP (DO-220AA)

Molding compound meets UL 94 V-0 flammability rating Base P/N-M3 - halogen-free, RoHS-compliant, and industrial grade

**Terminals:** matte tin plated leads, solderable per J-STD-002 and JESD 22-B102

M3 suffix meets JESD 201 class 1A whisker test

**Polarity:** color band denotes cathode end

### LINKS TO ADDITIONAL RESOURCES



PRIMARY CHARACTERISTICS	
V <sub>Z</sub> nom.	4.2 V to 38 V
P <sub>tot</sub> at T <sub>L</sub> = 75 °C	1500 mW
P <sub>tot</sub> at T <sub>L</sub> = 25 °C	600 mW
T <sub>J</sub> max.	150 °C
V <sub>Z</sub> specification	Pulse current
Package	SMP (DO-220AA)
Circuit configuration	Single

PACKAGE				
PACKAGE NAME	WEIGHT	MOLDING COMPOUND FLAMMABILITY RATING	MOISTURE SENSITIVITY LEVEL	SOLDERING CONDITIONS
SMP (DO-220AA)	24 mg	UL 94 V-0	MSL level 1 (according J-STD-020)	260 °C/10 s at terminals

MAXIMUM RATINGS (T <sub>A</sub> = 25 °C unless otherwise noted)			
PARAMETER	SYMBOL	VALUE	UNIT
Power dissipation at T <sub>L</sub> = 75 °C (fig. 1) <sup>(1)</sup>	P <sub>tot</sub>	1500	mW
Power dissipation at T <sub>A</sub> = 25 °C (fig. 1) <sup>(2)</sup>	P <sub>tot</sub>	600	mW
Maximum instantaneous forward voltage at 200 mA for all types <sup>(3)</sup>	V <sub>F</sub>	1.5	V
Operating junction temperature	T <sub>J</sub>	150	°C
Storage temperature range	T <sub>STG</sub>	-65 to +150	°C

#### Notes

<sup>(1)</sup> Mounted on PCB with 5.0 mm x 5.0 mm copper pads attached to each terminal

<sup>(2)</sup> Mounted on minimum recommended pad layout

<sup>(3)</sup> Pulse test: 300 μs pulse width, 1 % duty cycle



ELECTRICAL CHARACTERISTICS ( $T_A = 25\text{ }^\circ\text{C}$ unless otherwise noted)								
PART NUMBER	DEVICE MARKING CODE	ZENER VOLTAGE RANGE			TEST CURRENT	MAXIMUM ZENER DYNAMIC IMPEDANCE	MAXIMUM REVERSE LEAKAGE CURRENT	
		$V_Z$ AT $I_{ZT}$			$I_{ZT}$	$Z_{ZT}$ AT $I_{ZT}$	$I_R$ at $V_R$	
		V			mA	$\Omega$	$\mu\text{A}$	V
		MIN.	NOM.	MAX.		MAX.	MAX.	
PTV 3.9B	VB	3.9	4.2	4.4	40	15	20	1.0
PTV 4.3B	VC	4.3	4.6	4.8	40	15	20	1.0
PTV 4.7B	VD	4.7	5.0	5.2	40	10	20	1.0
PTV 5.1B	VE	5.1	5.4	5.7	40	8	20	1.0
PTV 5.6B	VF	5.6	6.0	6.3	40	8	20	1.5
PTV 6.2B	VG	6.2	6.6	7.0	40	6	20	3.0
PTV 6.8B	VH	6.8	7.3	7.7	40	6	50	3.5
PTV 7.5B	VI	7.5	8.0	8.4	40	4	20	4.0
PTV 8.2B	VJ	8.2	8.8	9.3	40	4	20	5.0
PTV 9.1B	VK	9.1	9.7	10.2	40	6	20	6.0
PTV 10B	VL	10.0	10.6	11.2	40	6	10	7.0
PTV 11B	VM	11.0	11.7	12.3	20	8	10	8.0
PTV 12B	VN	12.0	12.8	13.5	20	8	10	9.0
PTV 13B	VO	13.3	14.2	15.0	20	10	10	10.0
PTV 15B	VP	14.7	15.6	16.5	20	10	10	11.0
PTV 16B	VQ	16.2	17.3	18.3	20	12	10	12.0
PTV 18B	VR	18.0	19.2	20.3	20	12	10	13.0
PTV 20B	VS	20.0	21.2	22.4	20	14	10	15.0
PTV 22B	VT	22.0	23.3	24.5	10	14	10	17.0
PTV 24B	VU	24.0	25.8	27.6	10	16	10	19.0
PTV 27B	VV	27.0	28.9	30.8	10	16	10	21.0
PTV 30B	VX	30.0	32.0	34.0	10	18	10	23.0
PTV 33B	VY	33.0	35.0	37.0	10	18	10	25.0
PTV 36B	VZ	36.0	38.0	40.0	10	20	10	27.0

THERMAL CHARACTERISTICS ( $T_A = 25\text{ }^\circ\text{C}$ unless otherwise noted)			
PARAMETER	SYMBOL	LIMIT	UNIT
Typical thermal resistance, junction to lead <sup>(1)</sup>	$R_{\theta JL}$	50	$^\circ\text{C/W}$
Typical thermal resistance, junction to ambient <sup>(2)</sup>	$R_{\theta JA}$	208	$^\circ\text{C/W}$

**Notes**

- (1) Mounted on PCB with 5.0 mm x 5.0 mm copper pad areas attached to each terminal  
(2) Mounted on minimum recommended pad layout

ORDERING INFORMATION (Example)				
PREFERRED P/N	UNIT WEIGHT (g)	PREFERRED PACKAGE CODE	BASE QUANTITY	DELIVERY MODE
PTV7.5B-M3/84A	0.024	84A	3000	7" diameter plastic tape and reel
PTV7.5B-M3/85A	0.024	85A	10 000	13" diameter plastic tape and reel



**RATINGS AND CHARACTERISTICS CURVES** ( $T_A = 25\text{ }^\circ\text{C}$  unless otherwise noted)

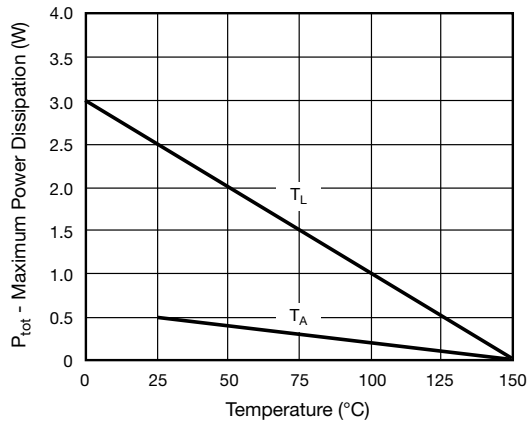


Fig. 1 - Steady State Power Derating

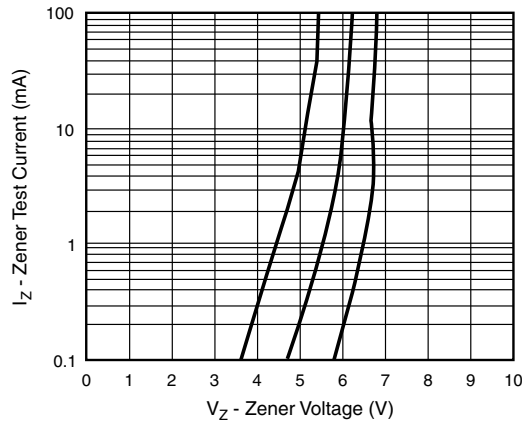


Fig. 2 - Typical Zener Voltage

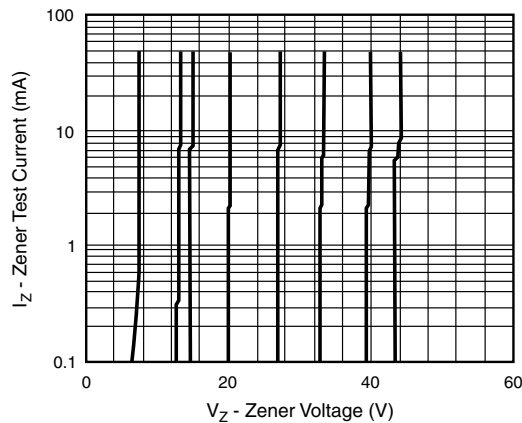
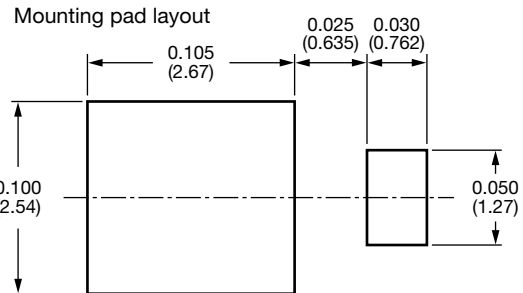
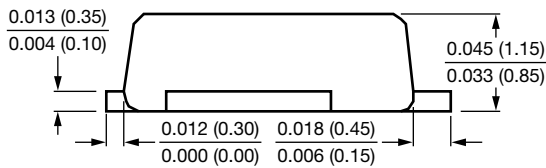
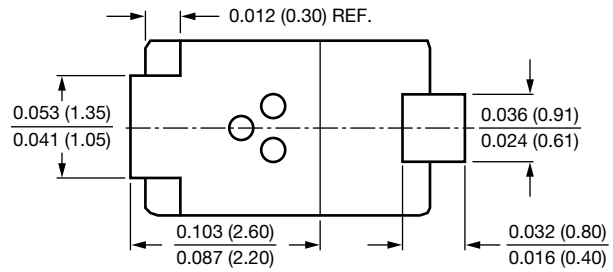
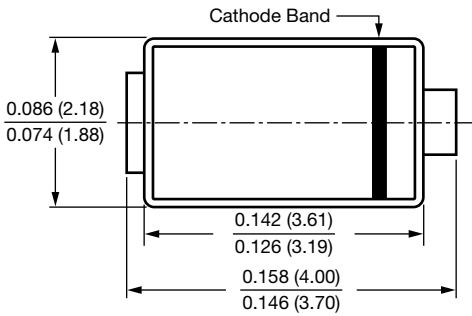


Fig. 3 - Typical Zener Voltage



PACKAGE OUTLINE DIMENSIONS in inches (millimeters)

SMP (DO-220AA)





## **Disclaimer**

ALL PRODUCT, PRODUCT SPECIFICATIONS AND DATA ARE SUBJECT TO CHANGE WITHOUT NOTICE TO IMPROVE RELIABILITY, FUNCTION OR DESIGN OR OTHERWISE.

Vishay Intertechnology, Inc., its affiliates, agents, and employees, and all persons acting on its or their behalf (collectively, "Vishay"), disclaim any and all liability for any errors, inaccuracies or incompleteness contained in any datasheet or in any other disclosure relating to any product.

Vishay makes no warranty, representation or guarantee regarding the suitability of the products for any particular purpose or the continuing production of any product. To the maximum extent permitted by applicable law, Vishay disclaims (i) any and all liability arising out of the application or use of any product, (ii) any and all liability, including without limitation special, consequential or incidental damages, and (iii) any and all implied warranties, including warranties of fitness for particular purpose, non-infringement and merchantability.

Statements regarding the suitability of products for certain types of applications are based on Vishay's knowledge of typical requirements that are often placed on Vishay products in generic applications. Such statements are not binding statements about the suitability of products for a particular application. It is the customer's responsibility to validate that a particular product with the properties described in the product specification is suitable for use in a particular application. Parameters provided in datasheets and / or specifications may vary in different applications and performance may vary over time. All operating parameters, including typical parameters, must be validated for each customer application by the customer's technical experts. Product specifications do not expand or otherwise modify Vishay's terms and conditions of purchase, including but not limited to the warranty expressed therein.


Hyperlinks included in this datasheet may direct users to third-party websites. These links are provided as a convenience and for informational purposes only. Inclusion of these hyperlinks does not constitute an endorsement or an approval by Vishay of any of the products, services or opinions of the corporation, organization or individual associated with the third-party website. Vishay disclaims any and all liability and bears no responsibility for the accuracy, legality or content of the third-party website or for that of subsequent links.

Vishay products are not designed for use in life-saving or life-sustaining applications or any application in which the failure of the Vishay product could result in personal injury or death unless specifically qualified in writing by Vishay. Customers using or selling Vishay products not expressly indicated for use in such applications do so at their own risk. Please contact authorized Vishay personnel to obtain written terms and conditions regarding products designed for such applications.

No license, express or implied, by estoppel or otherwise, to any intellectual property rights is granted by this document or by any conduct of Vishay. Product names and markings noted herein may be trademarks of their respective owners.

## Looking for pricing, stock, or lifecycle information?

Click below to explore more details on WIN SOURCE:

 [View PTV27B-M3/84A on WIN SOURCE](#)

 [Vishay Information](#)

## Optimize Your Supply Chain with WIN SOURCE Solutions

-  Global Sourcing Solution
-  Obsolete Management
-  Cost Control Management
-  Shortage Management
-  Alternative Solution
-  Excess Inventory Management