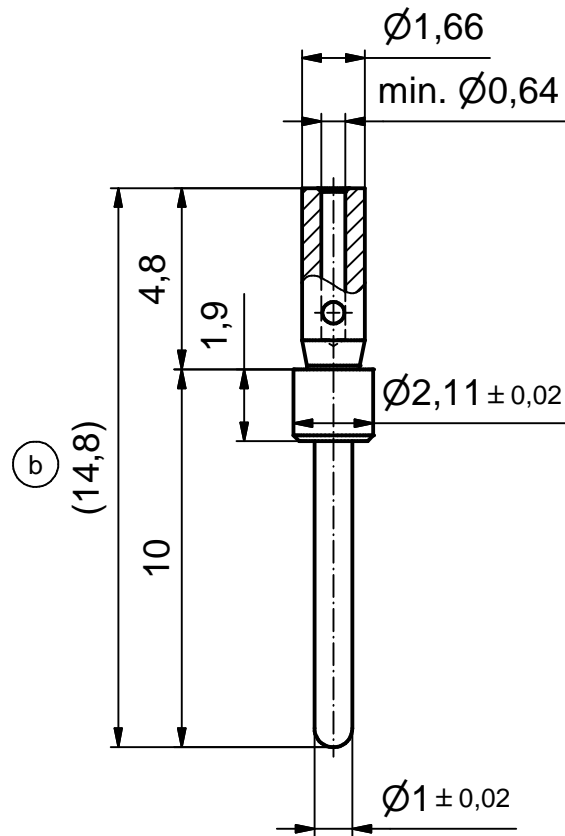
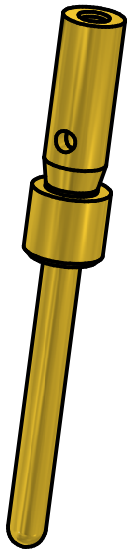


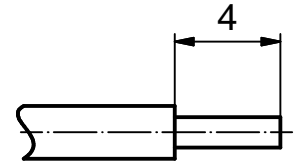


**THE DATASHEET OF  
161A18309X**





STRIPPING DIMENSION (b)



Part-no. as per finish			
(b) GOLD FLASH over NICKEL (c)	min. 20µm HARD GOLD over min. 50µm NICKEL	min. 30µm HARD GOLD over min. 50µm NICKEL	min. 50µm HARD GOLD over min. 50µm NICKEL
161A18309X	161B18309X	161C18309X	161J18309X

- (b) NOTES:
1. Material: Copper alloy
  2. Finish: See table
  3. Temperature range: -55 °C to +125 °C
  4. Rated current: 5 A maximum
  5. Contact resistance: ≤ 10 mOhm
  6. Crimping: Use crimp tool 360X10329X  
With tool insert 360X20069X  
Selector settings: 7 for AWG 24  
6 for AWG 26  
5 for AWG 28

Directive 2002/95/EC RoHS compliant

THIS DRAWING MAY NOT BE COPIED OR REPRODUCED IN ANY WAY, AND MAY NOT BE PASSED ON TO A THIRD PARTY WITHOUT WRITTEN PERMISSION. OWNERSHIP AND COPYRIGHT OF CONEC GmbH

DO NOT ALTER CAD DRAWING BY HAND				tolerance		 dim. in mm
				DIN ISO 2768-m		
				date	name	
				drawn	04.06.03	Lehmenkühler
				appd.	10.06.03	Kühle
				norm		
1 x c	Ä 4116	26.09.11	Lehm.	d-old		
4 x b	Ä 3698	24.08.10	Lehm.			
a	Original					
rev.	description	date	name			

scale:	5:1	
material:	SEE NOTES	
title:	<b>CRIMP PLUG CONTACT</b> screw machined version accepts cable AWG 28-24	
dwg no:	Inventor 10	DIN-A4
	16K1A968	sh: 1
part no:	SEE TABLE	

## Looking for pricing, stock, or lifecycle information?

Click below to explore more details on WIN SOURCE:

 [View 161A18309X on WIN SOURCE](#)

 [Manufacturer Information](#)

## Optimize Your Supply Chain with WIN SOURCE Solutions

-  Global Sourcing Solution
-  Obsolete Management
-  Cost Control Management
-  Shortage Management
-  Alternative Solution
-  Excess Inventory Management