



**THE DATASHEET OF  
DB5W5SA00LF**



REFERENCE SPECIFICATIONS

-NFC 93425 (in compliance with HE 507)

PHYSICAL CHARACTERISTICS

- INSULATOR MATERIAL: THERMOPLASTIC .UL94V0
- ACCESSORIES: BRASS
- SHELLS: STEEL

ELECTRICAL CHARACTERISTICS

- CONTACT/CONTACT : >=1000 V
- CONTACT/GROUND : >=1200 V
- INSULATION RESISTANCE: >=5000 MOhms

ENVIRONMENTAL CHARACTERISTICS

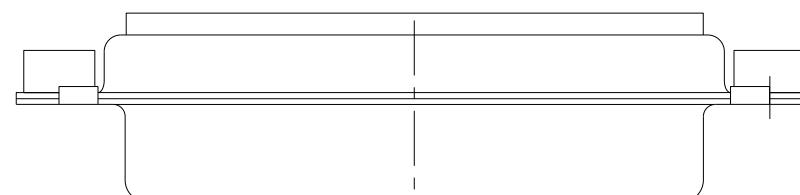
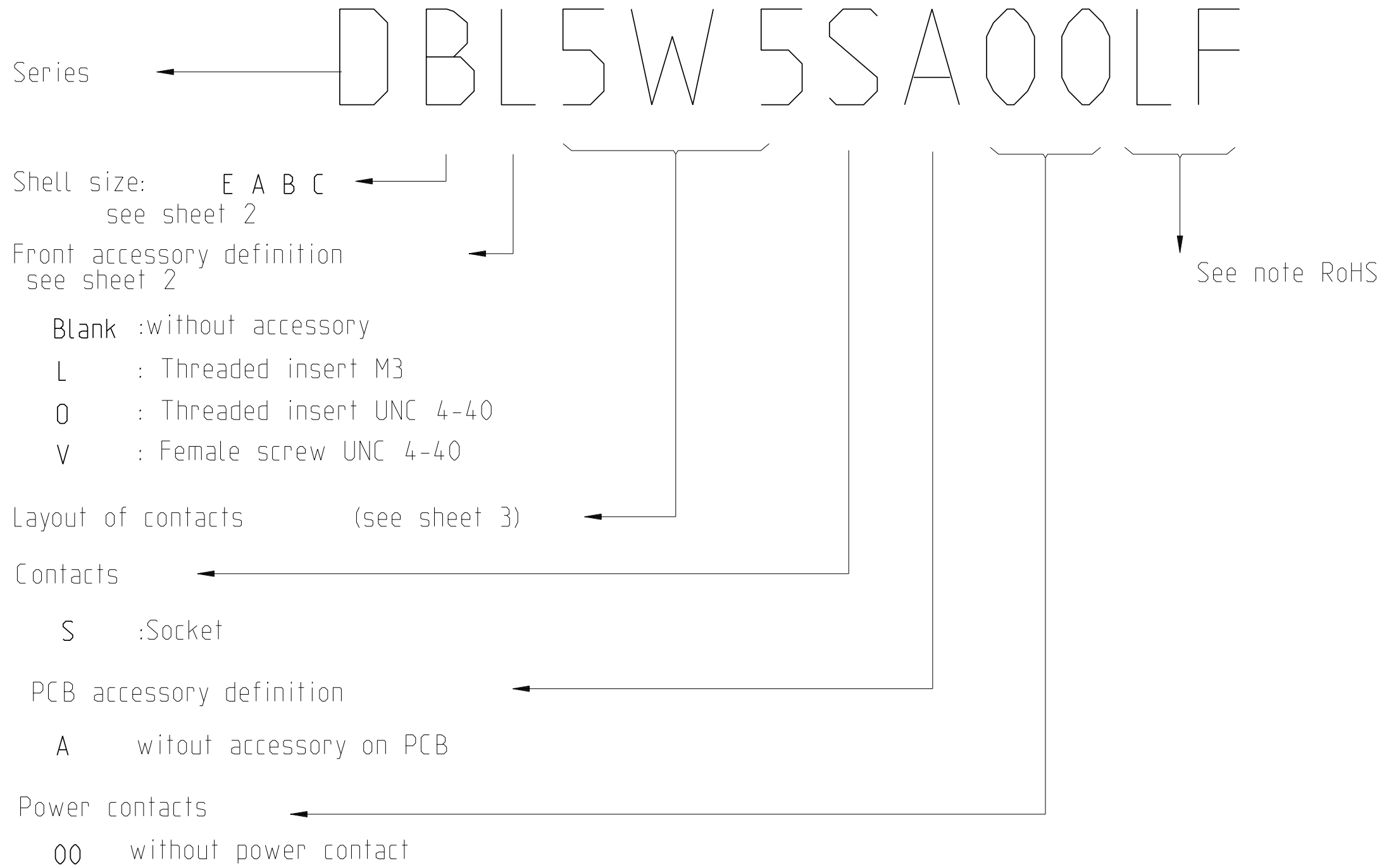
- CLIMATIC CATEGORY: 55/125/21
- TEMPERATURE RANGE -55°C TO +125°C
- DAMP HEAT STEADY STATE 21 DAYS
- SALT SPRAY 24 HOURS

MECHANICAL CHARACTERISTICS

- RETENTION AGAINST TORQUE:
  - Threaded insert: 0.7 N.m minimum
  - Female screw : 0.5 N.m minimum

NOTE RoHS INFORMATION

- The "LF" products meet european union Directives and other country regulations as described in GS-22-008.
- Shell plating :2 to 4 μm Cu+ Ni + 3 to 10 μm Sn(pure bright)
- Accessories: Sn pure bright + nickel
- Packaging spec: See GS-14-920



|                                       |         |                |            |              |                            |                        |                  |           |          |
|---------------------------------------|---------|----------------|------------|--------------|----------------------------|------------------------|------------------|-----------|----------|
| spec ref                              | dr      | Pro Engineer 1 | 2015/06/16 | projection   | mm                         | size                   | A2               | scale     | 2:1      |
| tolerance std                         | eng     | J Dalbard      | 2016/09/13 |              |                            | ecn no                 | ECN-ELXF-24942-1 | rel level | Released |
| TOLERANCES UNLESS OTHERWISE SPECIFIED | chr     | J Dalbard      | 2016/09/19 |              |                            |                        |                  |           |          |
|                                       | appr    | Aymeric Soudy  | 2016/09/20 |              |                            |                        |                  |           |          |
| surface                               | linear  | 0.X            | ±0.3       | Amphenol FCI | SUB FEMALE DW              | cat. no.               | C01-8639-2311    | rev       | E        |
|                                       |         | 0.XX           | ±0.10      |              | full power without contact | Product - Customer Drw | sheet 1 of 4     |           |          |
|                                       | angular | 0°             | ±2°        |              |                            |                        |                  |           |          |

Amphenol FCI

© 2016 APCI

F

E

D

C

B

A

FIRST ANGLE PROJECTION

E

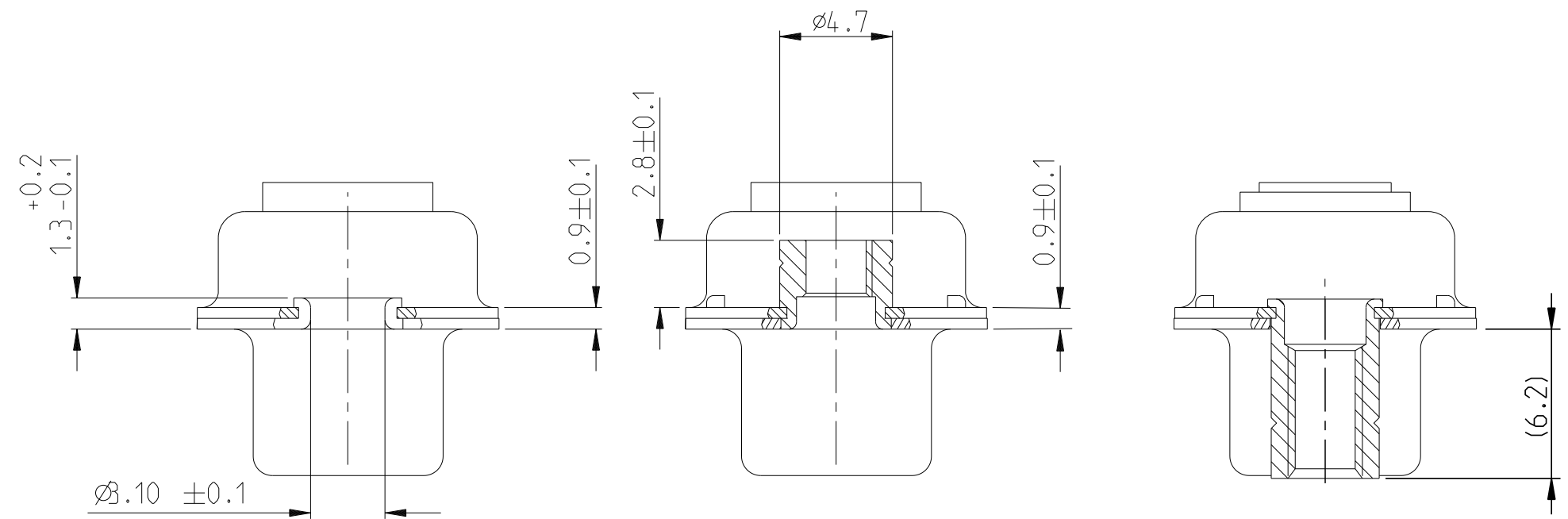
D

C

B

A

FIRST ANGLE PROJECTION



|                 |               |                                  |                         |
|-----------------|---------------|----------------------------------|-------------------------|
| FRONT ACCESSORY | Blank without | L insert M3<br>O insert UNC 4.40 | V Female screw UNC 4-40 |
| PCB ACCESSORIES | A without     | A without                        | A without               |

| PART NUMBER   | FRONT ACCESSORY       | PCB ACCESSORY |
|---------------|-----------------------|---------------|
| D*xW xSA00LF  | WITHOUT               | WITHOUT       |
| D*VxW xSA00LF | Female screw UNC 4-40 | WITHOUT       |
| D*LxW xSA00LF | Insert M3             | WITHOUT       |
| D*OxW xSA00LF | Insert UNC 4-40       | WITHOUT       |

shell size LAYOUTS

|   |     |
|---|-----|
| E | 2V2 |
| A | 3V3 |
| A | 3W3 |
| B | 5W5 |
| C | 8W8 |

SCALE:4

Amphenol FCI

|                                       |                    |                                       |            |   |                         |                        |                |           |          |
|---------------------------------------|--------------------|---------------------------------------|------------|---|-------------------------|------------------------|----------------|-----------|----------|
| spec ref                              | dr Pro Engineer 1  | 2015/06/16                            | projection | mm  | size A2                 | scale 2:1              |                |           |          |
| tolerance std                         | eng J Dalbard      | 2016/09/13                            |            |   | ecn no                  | ECN-ELX-F-24942-1      |                |           |          |
| TOLERANCES UNLESS OTHERWISE SPECIFIED | chr J Dalbard      | 2016/09/19                            |            |   |                         |                        | product family | rel level | Released |
|                                       | appr Aymeric Soudy | 2016/09/20                            |            |   |                         |                        |                |           |          |
| surface                               |                    |                                       |            | Amphenol FCI<br>SUB FEMALE DW<br>full power without contact | dwg no<br>C01-8639-2311 | rev<br>E               |                |           |          |
|                                       | linear             | 0.X ±0.3<br>0.XX ±0.10<br>0.XXX ±0.05 | angular    | 0° ±2°  | cat. no.                | Product - Customer Drw | sheet 2 of 4   |           |          |

PDS: Rev :E

STATUS:Released

Printed: Sep 28, 2016

© 2016 AFCI

2V2

3V3

3W3

FIRST ANGLE PROJECTION

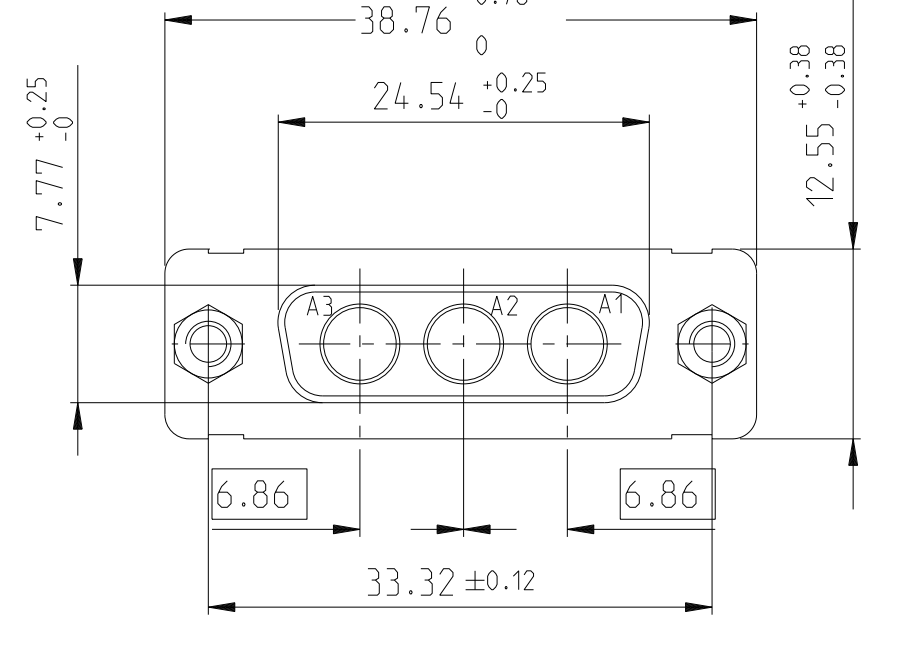
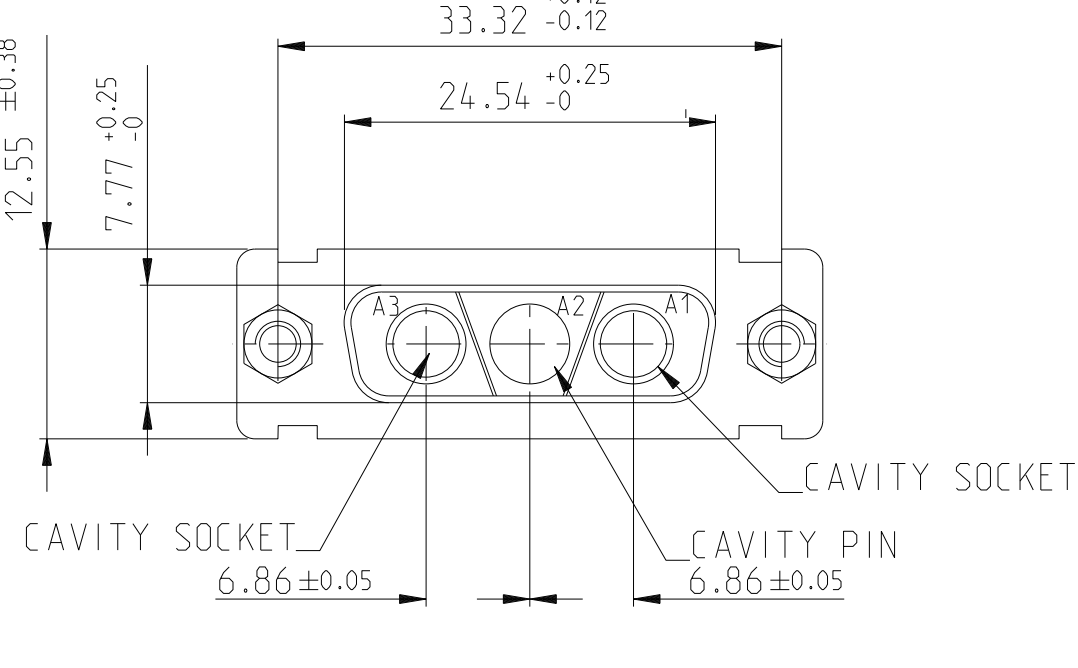
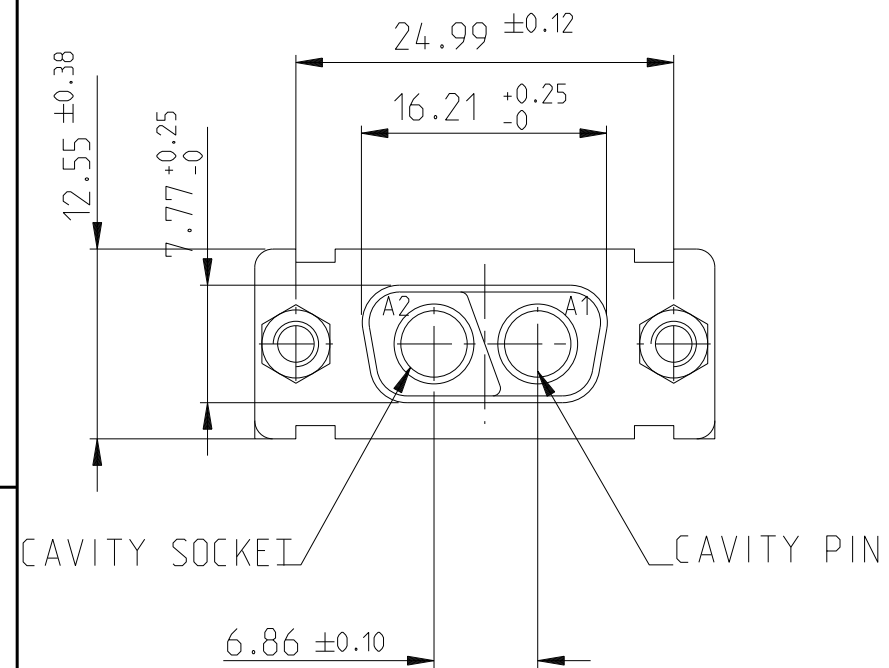
B

C

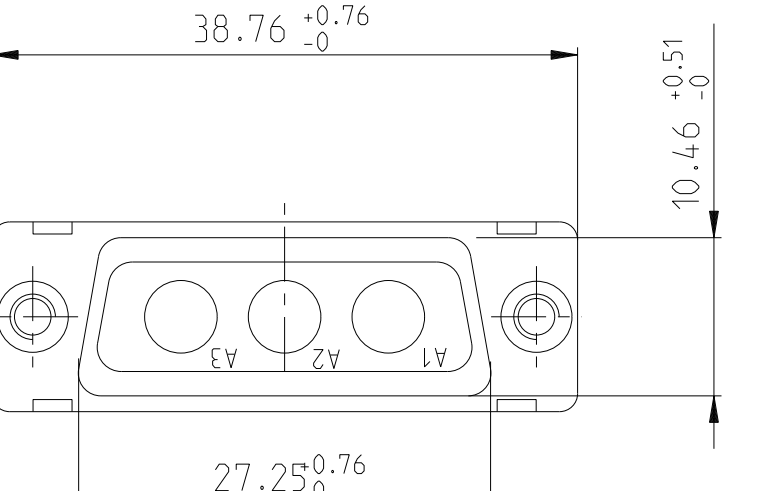
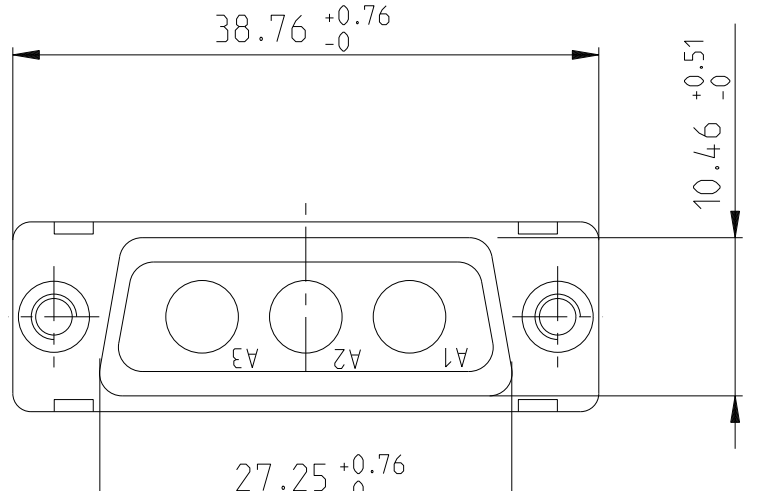
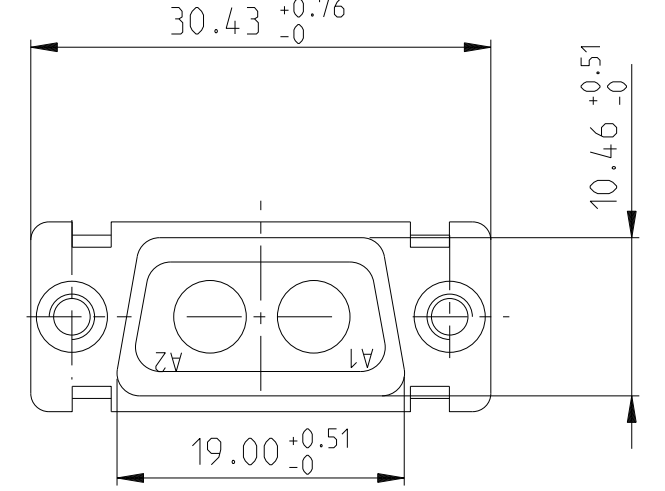
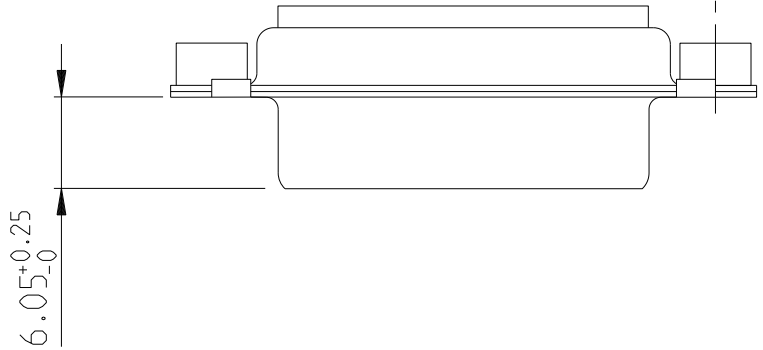
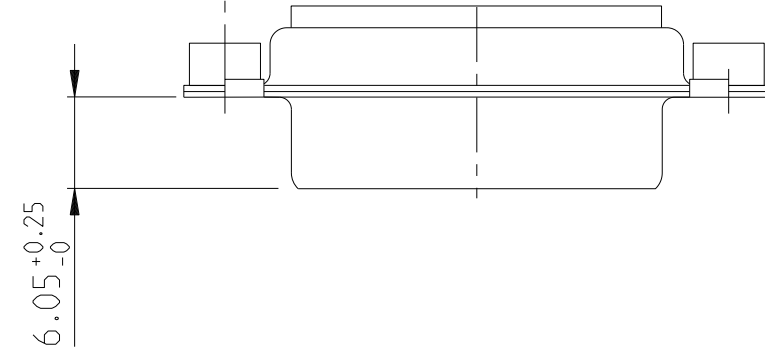
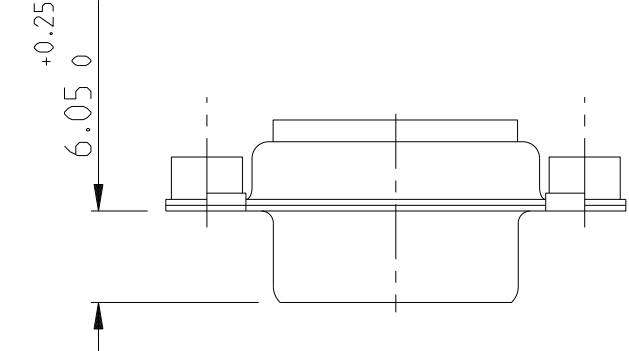
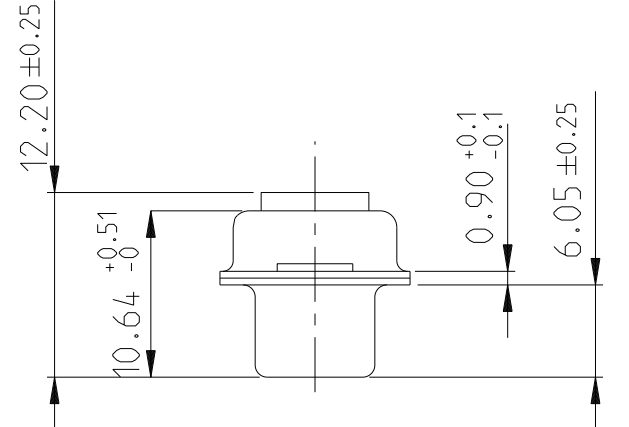
D

E

F



SIDE VIEW FOR LAYOUTS: E A B C



Amphenol FCI

© 2016 AFCI

|                                       |         |                |            |                        |               |                |                   |                        |              |   |
|---------------------------------------|---------|----------------|------------|------------------------|---------------|----------------|-------------------|------------------------|--------------|---|
| spec ref                              | dr      | Pro Engineer 1 | 2015/06/16 | projection             | mm            | size           | A2                | scale                  | 2:1          |   |
| tolerance std                         | eng     | J Dalbard      | 2016/09/13 | FIRST ANGLE PROJECTION | ←             | ecn no         | ECN-ELX-F-24942-1 |                        |              |   |
| TOLERANCES UNLESS OTHERWISE SPECIFIED | chr     | J Dalbard      | 2016/09/19 |                        |               | rel level      | Released          |                        |              |   |
|                                       | appr    | Aymeric Soudy  | 2016/09/20 |                        |               | product family | -                 |                        |              |   |
| surface                               | linear  | 0.X            | ±0.3       | Amphenol FCI           | SUB FEMALE DW | cat. no.       | -                 | Product - Customer Drw | sheet 3 of 4 |   |
|                                       |         | 0.XX           | ±0.10      |                        |               |                |                   |                        |              |   |
|                                       |         | 0.XXX          | ±0.05      |                        |               |                |                   |                        |              |   |
|                                       | angular | 0°             | ±2°        |                        |               |                |                   |                        |              |   |
|                                       |         |                |            |                        |               | dwg no         | C01-8639-2311     |                        | rev          | E |

PDS: Rev :E

STATUS:Released

Printed: Sep 28, 2016

FIRST ANGLE PROJECTION

B

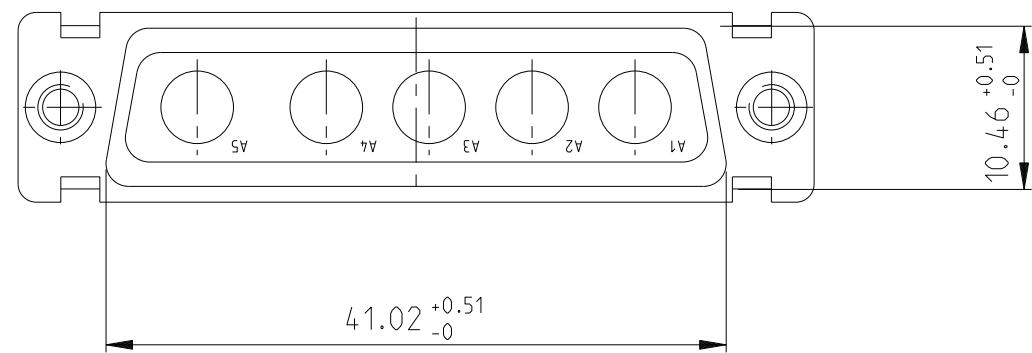
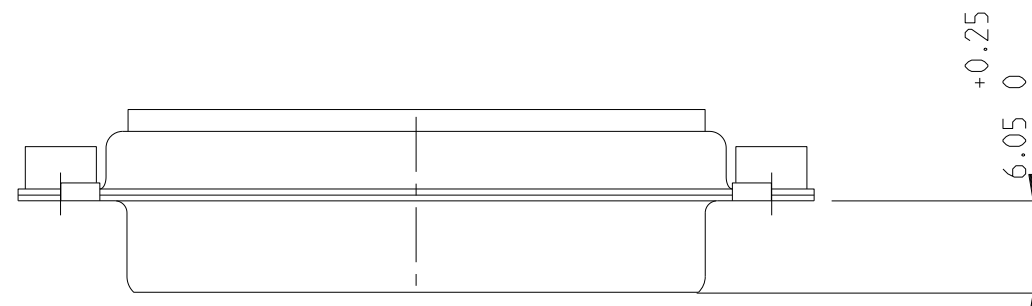
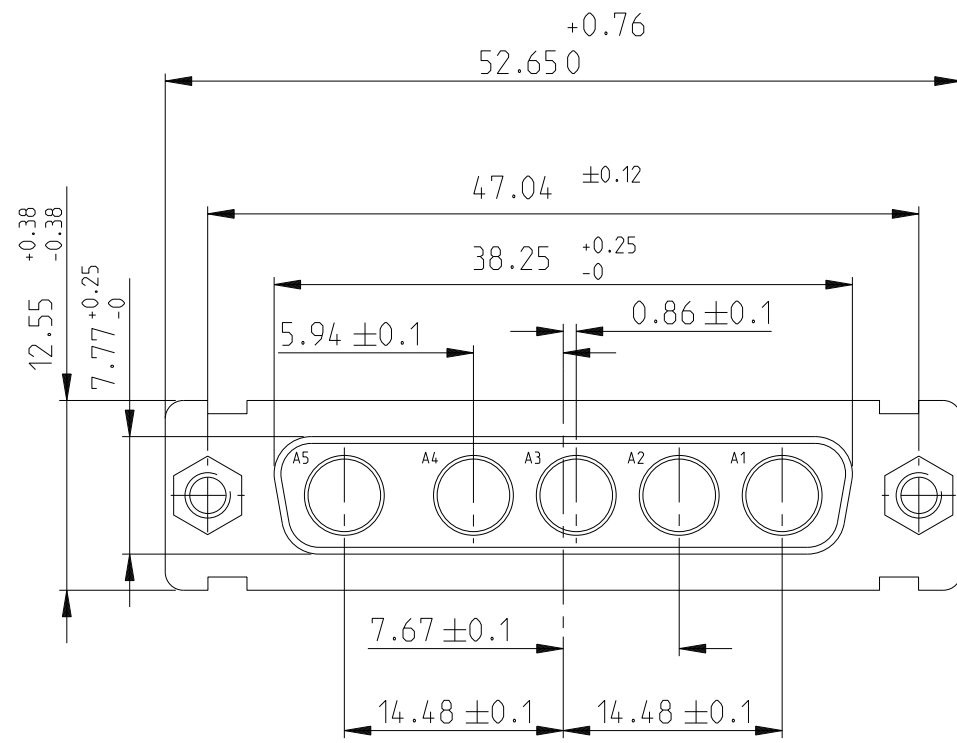
C

D

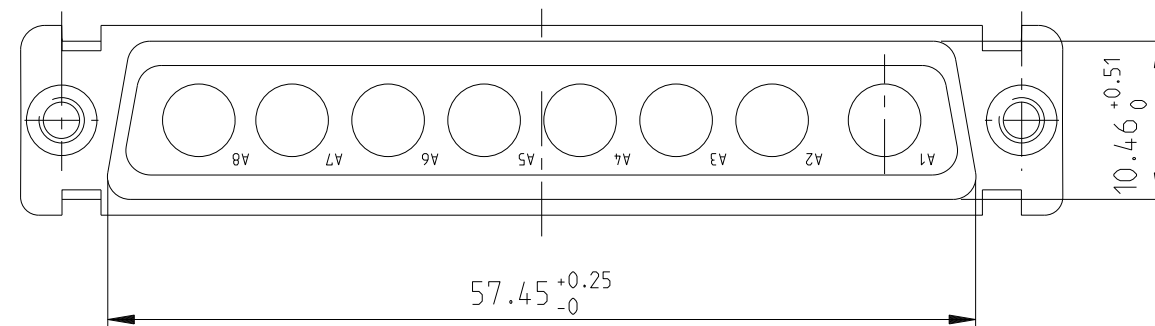
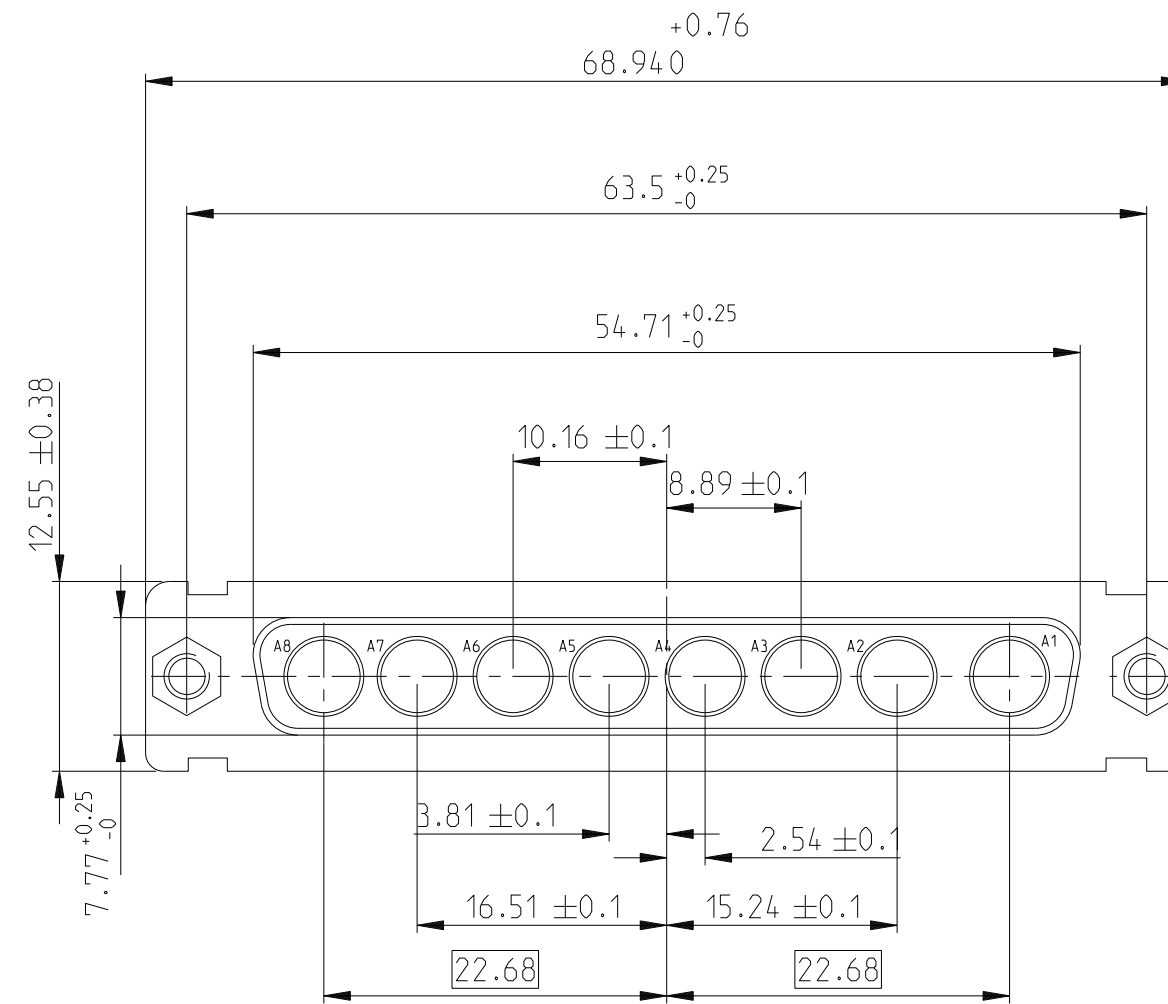
E

F

5W5



8W8



A

B

C

D

E

FIRST ANGLE PROJECTION

Amphenol FCI

© 2016 AFCI

|                                       |         |                |            |                            |    |                       |                  |              |               |
|---------------------------------------|---------|----------------|------------|----------------------------|----|-----------------------|------------------|--------------|---------------|
| spec ref                              | dr      | Pro Engineer 1 | 2015/06/16 | projection                 | mm | size                  | A2               | scale        | 2:1           |
| tolerance std                         | eng     | J Dalbard      | 2016/09/13 |                            |    | ecn no                | ECN-ELXF-24942-1 | rel level    | Released      |
| TOLERANCES UNLESS OTHERWISE SPECIFIED | chr     | J Dalbard      | 2016/09/19 |                            |    |                       |                  |              |               |
|                                       | appr    | Aymeric Soudy  | 2016/09/20 |                            |    |                       |                  |              |               |
| surface                               | linear  | 0.X            | ±0.3       | Amphenol FCI               |    | SUB FEMALE DW         |                  | dwg no       | C01-8639-2311 |
|                                       |         | 0.XX           | ±0.10      | full power without contact |    |                       |                  | rev          | E             |
|                                       | angular | 0°             | ±2°        | cat. no.                   |    | Product - Customer Dw |                  | sheet 4 of 4 |               |

PDS: Rev :E

STATUS:Released

Printed: Sep 28, 2016

## Looking for pricing, stock, or lifecycle information?

Click below to explore more details on WIN SOURCE:

 [View DB5W5SA00LF on WIN SOURCE](#)

 [Amphenol Information](#)

## Optimize Your Supply Chain with WIN SOURCE Solutions

-  Global Sourcing Solution
-  Obsolete Management
-  Cost Control Management
-  Shortage Management
-  Alternative Solution
-  Excess Inventory Management