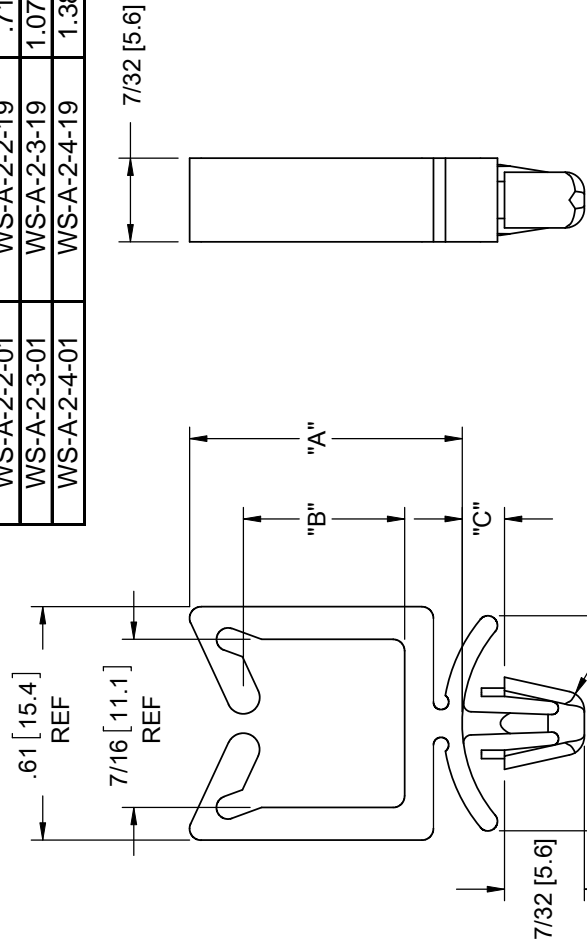




**THE DATASHEET OF
WS-A-2-1-19**



PART NO.		DIM. "A" REF	DIM. "E" REF
NYLON 6/6 UL 94 V-2 (RMS-01)	NYLON 6/6 UL 94 V-0 (RMS-19)		
WS-A-1-01	WS-A-1-19	.52 [13.2]	.19 [4.8]
WS-A-2-01	WS-A-2-19	.71 [18]	.38 [9.7]
WS-A-3-01	WS-A-3-19	1.07 [27.2]	.74 [18.8]
WS-A-4-01	WS-A-4-19	1.38 [35]	1.05 [26.7]
WS-A-2-1-01	WS-A-2-1-19	.52 [13.2]	.19 [4.8]
WS-A-2-2-01	WS-A-2-2-19	.71 [18]	.38 [9.7]
WS-A-2-3-01	WS-A-2-3-19	1.07 [27.2]	.74 [18.8]
WS-A-2-4-01	WS-A-2-4-19	1.38 [35]	1.05 [26.7]



NOTES:

1. COLOR: NATURAL.
2. ALTERNATE UNITS FOR REFERENCE ONLY.
3. MATERIAL: NYLON 6/6 UVB (RMS-46).
COLOR BLACK. AVAILABLE BY SPECIAL ORDER ONLY.
TO ORDER REPLACE "-01" WITH "-UVB".

TITLE: **WIRE SADDLE W/ ARROWHEAD**

F	SEE CO 200341 FOR CHANGES	SK	03/17/09		
E	SEE CO 200333 FOR CHANGES	SK	09/25/07		
D	REDRAWN. SEE ECN #1333 FOR CHANGES	SK	06/13/07		
-	SEE ENGINEERING FOR REV A-C	--	----		
REV.	DESCRIPTION	ENGR.	DATE		

CREATED USING
SOLIDWORKS
TOLERANCES
UNLESS NOTED
XX±.010
XXX±.005
FRAC = ±1/64
ANG = ±1°

FILE #: WS-A
SHEET: 1 OF 1
SHEET SIZE: A
RE: RICHCO, INC.

DWN: SK
DT: 06/13/07
APP: RT
CHKD: RG
RICHCO, INC.
ENG@RICHCO-INC.COM
(773) 539-4060

Looking for pricing, stock, or lifecycle information?

Click below to explore more details on WIN SOURCE:

- ⊖ [View WS-A-2-1-19](#) on WIN SOURCE
- ⊖ [Essentra Components](#) Information

Optimize Your Supply Chain with WIN SOURCE Solutions

- ✓ Global Sourcing Solution
- ✓ Obsolete Management
- ✓ Cost Control Management
- ✓ Shortage Management
- ✓ Alternative Solution
- ✓ Excess Inventory Management