



**THE DATASHEET OF
L717HDE15PD4CH4R**



REVISIONS				
SYM	ECN	DESCRIPTION	DATE	APPROVED
2		Color blue to color black	06/15/10	IP
3		Detail material of Body :PBT	10/11/12	IP

D-SUB TECHNICAL DATA

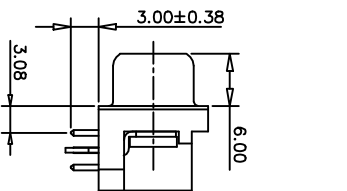
SHELL : Steel 2.5um (100u") min tin over 1.25um (50u") min nickel
 BODY : Glass filled thermoplasti; PBT
 Flame retardant to UL94 V-0 color BLACK

CONTACTS : Brass
 gold flash over 1.25um (50u") min nickel on mating area
 2.50um (100u") min tin over nickel on solder area

BOARDLOCK: Brass, 100u" tin min over 50u" min nickel
 REAR INSERT: Brass, 50u" min nickel

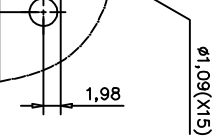
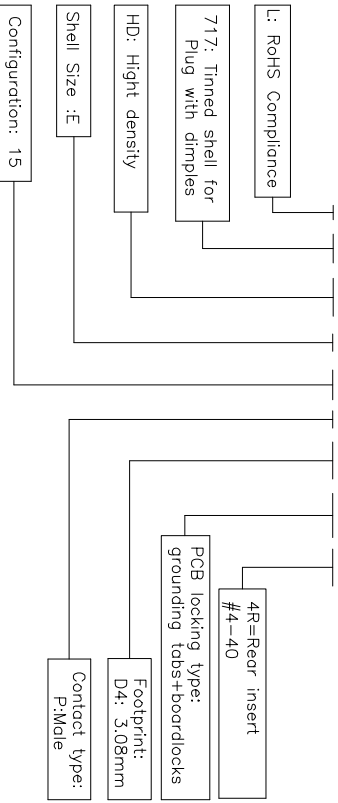
ELECTRICAL : Voltage rating : 1000 V RMS at 50 Hz
 Current rating 3A.
 Insulation resistance >5000 M Ohms
 Contact resistance 25 mOhms max.
 CLIMATIC : Temperature range -55 °C to 125°C

MARKING : Amphenol



PRODUCT CODE

L717 HD E 15 P D4 CH 4R



LAYOUT

(0.3)

drawing

SYMBOL	DESCRIPTION	DATE	APPROVED
1			

UNLESS OTHERWISE SPECIFIED		APPROVAL		DATE	
TOLERANCES	METRIC	DRAWN	RSOM	10/11/12	
U.S.		CHECKED	TOM	10/11/12	
±	0.50	DRAWING FILE :			
±X	0.30	TITLE			
±XX	0.20	Right angle, 3.08mm			
FRACTIONS	±/±	footprint, HD series			
ANGLES	°/°	STAMP DRAWING NO.			
2		C L717HD E15 P D4 CH 4R			

FOR MATERIALS AND FINISHES		ANGLE OF PROJECTION	
REMOVE SHARP EDGES		FIRST ANGLE	
DIMENSIONS	U.S.	THIRD ANGLE	
TOLERANCES	METRIC		

SCALE	SHEET	OF
NONE	1	1

A

B

C

D

3

4

2

1

Looking for pricing, stock, or lifecycle information?

Click below to explore more details on WIN SOURCE:

 [View L717HDE15PD4CH4R on WIN SOURCE](#)

 [Amphenol Information](#)

Optimize Your Supply Chain with WIN SOURCE Solutions

-  Global Sourcing Solution
-  Obsolete Management
-  Cost Control Management
-  Shortage Management
-  Alternative Solution
-  Excess Inventory Management