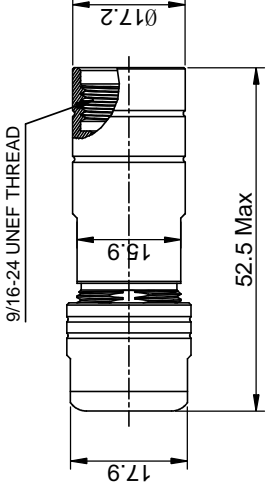
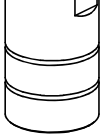
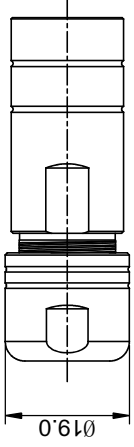
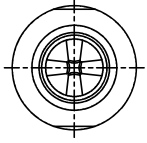




**THE DATASHEET OF
RT0L-10CG-S2**





REV	ECO	REL
B1	-	

NOTES : (UNLESS OTHERWISE SPECIFIED)



1. MATERIAL :
 - 1.1. NUT : ZINC ALLOY, NICKEL PLATED.
 - 1.2. CLAMP INSERT : THERMOPLASTIC U194 V-0.
 - 1.3. EMI SHIELDING RING : STAINLESS STEEL.
 - 1.4. BACK SHELL : ZINC ALLOY, NICKEL PLATED.
 - 1.5. O-RING: SILICONE RUBBER.
- 1.6. GROMMET : RUBBER.
2. ROHS COMPLIANT.
3. ALL DIMENSIONS ARE FOR REFERENCE USE ONLY.

P/N	SHIELDIN
RT0L-10CG-C1	WITHC
RT0L-10CG-C2	WITHC
RT0L-10CG-S1	WITI
RT0L-10CG-S2	WITI

QUANTITY	PART NUMBER	MATERIAL
UNLESS OTHERWISE SPECIFIED		
1) All dimensions are in metric (mm).		
2) Tolerances are as follows:		
DATE:	BY:	DATE:
2 PL DEC 40 15	BAI	11/16/24
3 PL DEC 40 08	Checked:	Angle: 45°
3) Note reference =		
ENGINEER:		
APPROVAL:		
CUSTOMER:		
MATERIAL SPECIFICATIONS:		
PROCESS SPECIFICATIONS:		
NEXT ASSY:		
THIS DRAWING IS SUPPLIED FOR REFERENCE USE ONLY. IT IS NOT TO BE USED FOR PRODUCTION. SPECIFICATIONS AND PERFORMANCE SHOWN HEREON ARE THE PROPERTY OF THE COMPANY AND ARE NOT TO BE REPRODUCED OR COPIED IN ANY MANNER WITHOUT THE WRITTEN PERMISSION OF THE COMPANY. MANUFACTURING VARIATIONS ARE NOT TO BE TOLERATED.		

Looking for pricing, stock, or lifecycle information?

Click below to explore more details on WIN SOURCE:

-  [View RT0L-10CG-S2 on WIN SOURCE](#)
-  [Amphenol Sine Systems Corp Information](#)

Optimize Your Supply Chain with WIN SOURCE Solutions

-  Global Sourcing Solution
-  Obsolete Management
-  Cost Control Management
-  Shortage Management
-  Alternative Solution
-  Excess Inventory Management