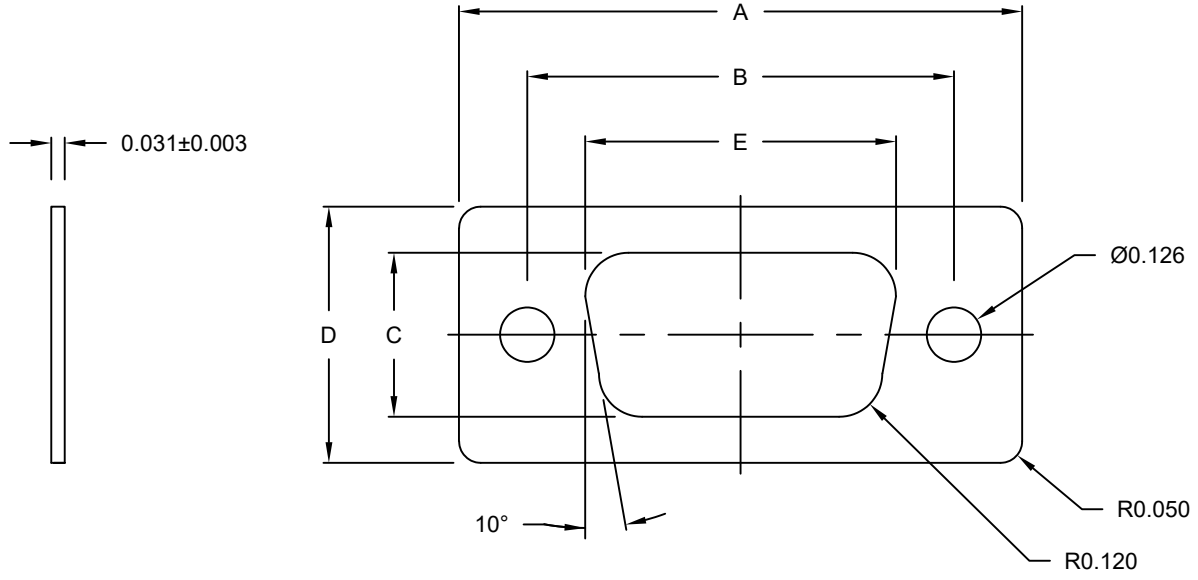




**THE DATASHEET OF  
SF6715**





SHELL SIZE	DIMENSIONS (inch/mm)				
	A <sup>±0.020</sup> / <sub>±0.50</sub>	B <sup>±0.020</sup> / <sub>±0.50</sub>	C <sup>±0.020</sup> / <sub>±0.50</sub>	D <sup>±0.020</sup> / <sub>±0.50</sub>	E <sup>±0.020</sup> / <sub>±0.50</sub>
09	1.299	0.984	0.378	0.591	0.717
	32.99	24.99	9.60	15.01	18.21
15	1.614	1.311	0.378	0.591	1.039
	41.00	33.30	9.60	15.01	26.39
25	2.165	1.850	0.378	0.591	1.583
	54.99	46.99	9.60	15.01	40.21

**SF67 YY**

SERIES \_\_\_\_\_

SHELL SIZE: \_\_\_\_\_

09

15

25

37P Gasket Variant Unavailable => Internal validation has determined that this specific configuration does not meet IP67 ingress protection standards.

RoHS COMPLIANT

UNITS = inch

DO NOT SCALE FROM DRAWING



THESE DRAWINGS AND SPECIFICATIONS ARE THE PROPERTY OF NorComp AND SHALL NOT BE REPRODUCED, COPIED OR USED AS THE BASIS FOR THE MANUFACTURE OR SALE OF APPARATUS WITHOUT WRITTEN PERMISSION.

DRAWN: C. SMITH


DATE: 08/14/2008

**NorComp**

SCALE: NTS	SHEET 1 OF 1	REV 9
DWG NO. SF67YY		

## Looking for pricing, stock, or lifecycle information?

Click below to explore more details on WIN SOURCE:

 [View SF6715 on WIN SOURCE](#)

 [NorComp Inc. Information](#)

## Optimize Your Supply Chain with WIN SOURCE Solutions

-  Global Sourcing Solution
-  Obsolete Management
-  Cost Control Management
-  Shortage Management
-  Alternative Solution
-  Excess Inventory Management