



**THE DATASHEET OF
GW10J25K0E**



G Series

Capacitor Discharge & Symmetry



FEATURES

- High Power Dissipation up to 13W @25°C
- Specially Designed to meet Repetitive Pulse Loading
- Corrosion Resistant Terminals for long life
- Superior Vibration Resistance
- IEC 115-1 Reference Standard

SERIES SPECIFICATIONS

Series	Wattage @25°C	Wattage @70°C	Limiting Voltage	Critical Value	Ohmic Range
GW10	10	8.5	685	47KΩ	1Ω-82K
GW13	13	11	940	68KΩ	1Ω-120K

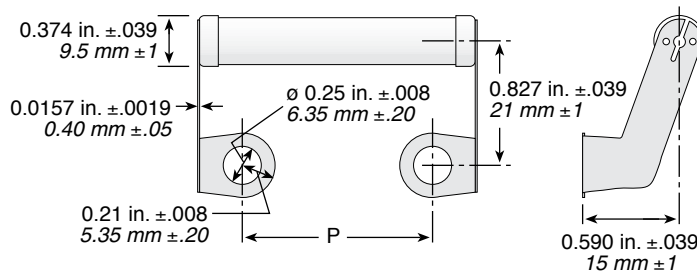
CHARACTERISTICS

Temperature Range	-55°C to 200°C
Terminal Strength	>25N
Derating	25°C to 350°C, Linearly
TCR	±100 ppm/°C
Tolerance	1%, ±2%, ±5%, ±10%

PERFORMANCE DATA

Endurance at Rated Temperature	Full Rated Power for 1000hrs, (1.5hrs ON, 0.5hrs OFF) at 25°C	ΔR < 5% + 0R05
Short Term Overload	10 x Rated Power for 5 secs, IEC115-1, Clause 4.1.3	ΔR < 2% + 0R05
Damp Heat	90-95% RH, 40°C, 56 Days,	ΔR < 5% + 0R05
Steady State	IEC 115-1, Clause 4.17.3	
Climatic Sequence	As per IEC 115-1, Clause 4.23	ΔR < 5% + 0R05
Solderability	Not Applicable-Resistor is Designed for Screw Mounting Only	
Terminal Strength	25 N Pull Test for 10 Seconds, IEC 115-1, Clause 4.16	ΔR < 0.5% + 0R05

DIMENSIONS



Series	Length P (in. ±.039 / mm±1)	
	GW10	0.866 / 22.0
GW13	1.252 / 31.8	

(continued)

G Series

Capacitor Discharge & Symmetry

COMPATIBILITY

BHC

GW10 Series	Case Sizes	GW13 Series	Case Sizes
ALS30/31	KE, KF	ALS30/31	ND, NF, NP, NT, RD, RH, RP

Cornell Dubilier

GW10 Series	Case Sizes	GW13 Series	Case Sizes
3186	EA, EB, EC, ED, EE, EF, EG, EH	3186	GC, GD, GE, GF, GG, GH, GJ, DN
3188	EA, EB, EC, ED, EE, EF, EG, EH	3188	GC, GD, GE, GF, GG, GH, GJ, DN
520C	BA, BH, BB, BJ, BC, BD, BE, BF	520C	DB, DJ, DC, DD, DE, DF, DP, DN, DG, FC, FD, FE, FF, FP, FN, FG
DCMC	BA, BH, BB, BJ, BC, BD, BE, BF	DCMC	DB, DJ, DC, DD, DE, DF, DP, DN, DG, FC, FD, FE, FF, FP, FN, FG
FG	All		
OTB	All		
MPF	All		
PF	BA, BH, BB, BJ, BC, BD, BE, BF		
SCR	A		
SF	All		
T	A		

Epcos

GW10 Series	Case Sizes	GW13 Series	Case Sizes
B41456	51.6	B41456	76.9
B41458	51.6	B41458	76.9
B43456	51.6	B43456	76.9, 91
B43458	51.6	B43458	76.9, 91

ILL Capacitor

GW10 Series	Case Sizes	GW13 Series	Case Sizes
LKP	51	LKP	77, 90
LRP	51		

Nichicon UK

GW10 Series	Case Sizes	GW13 Series	Case Sizes
NR	51	NR	76.2, 90
NT	51	NT	76.2, 90
NW	51	NW	76.2, 90
NX	51	NX	76.2, 90
QR	51	QR	76.2, 90

Panasonic

GW10 Series	Case Sizes	GW13 Series	Case Sizes
G	FB, FC, FE, FG, FH, FK, FL, FN, FP	G	HG, HH, HK, HL, HN, HP, HW

United Chemi-Con

GW10 Series	Case Sizes	GW13 Series	Case Sizes
KMH	50	LXA	76, 89
LXA	50	LXR	76, 89
RWE	50	KMH	76, 89
RWF	50	RWE	76, 89
RWY	50	RWF	76, 89
SME	50	RWL	76, 89
		RWY	76, 89
		SME	76, 89
		UTOR	76

Vishay

GW10 Series	Case Sizes	GW13 Series	Case Sizes
36D, 36DE, 36DX	BY, BA, BM, BB, BL, BC, BD, BE, BF	36D, 36DE, 36DX	DB, DJ, DC, DD, DE, DF

ORDERING INFORMATION

G Series — **GW10J5K00E** — E = RoHS compliant

Component Modifier	Wattage	Tolerance	Resistance Value	Examples:
W = wirewound	10 watts 13 watts	K = 10% J = 5% G = 2% F = 1%	R = Decimal K = 1,000	1K00 = 1,000Ω 10K0 = 10,000Ω 82K0 = 82,000Ω 120K = 120,000Ω

Standard part numbers

Ohms	10 watt	13 watt
1K	GW10J1K00E	GW13J1K00E
2.5K	GW10J2K50E	GW13J2K50E
5K	GW10J5K00E	GW13J5K00E
7.5K	GW10J7K50E	GW13J7K50E
10K	GW10J10K0E	GW13J10K0E
15K	GW10J15K0E	GW13J15K0E
20K	GW10J20K0E	GW13J20K0E
25K	GW10J25K0E	GW13J25K0E
40K	GW10J40K0E	GW13J40K0E
50K	GW10J50K0E	GW13J50K0E
75K	GW10J75K0E	GW13J75K0E

Looking for pricing, stock, or lifecycle information?

Click below to explore more details on WIN SOURCE:

 [View GW10J25K0E on WIN SOURCE](#)

 [Ohmite Information](#)

Optimize Your Supply Chain with WIN SOURCE Solutions

-  Global Sourcing Solution
-  Obsolete Management
-  Cost Control Management
-  Shortage Management
-  Alternative Solution
-  Excess Inventory Management