



THE DATASHEET OF
9677242009

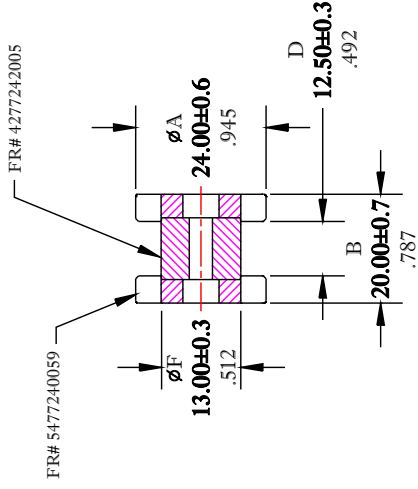
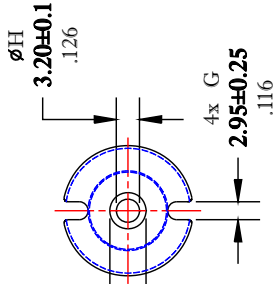


** Not all features are shown in this drawing. For more detailed information, please contact your Fair-Rite representative.

SIZE
B

UNCONTROLLED ~ CATALOG ~ DRAWING

2 x **4.60** [.181] Min.
x **2.96** [.116] Min. DEPTH



B Max. - B Min.
≤ **0.30**
≤ .012

| | |
|-----------------------------|----|
| ELECTRICAL S | |
| AL (nH) ± 10% | 88 |
| AL VALUE MEASUR WITH N=50 # | |

SEE SO

DIMENSIONS
BOLD NUMBERS ARE IN MILLIMETERS
LIGHT NUMBERS ARE IN INCHES

| | | | |
|------------------|-------------|------------|-------|
| FAIR-RITE | | ASSI | |
| TITLE | DRAWN BY | DATE | SIZE |
| | J.SERENCSCS | 07-03-2018 | B |
| | CHKD BY | | |
| | APPRVD BY | | SCALE |

NOTES:

1 - USE HYSOL# 9432NA EPOXY, OR APPROVED EQUIVALENT, TO ASSEMBLE.

FR# 77

Looking for pricing, stock, or lifecycle information?

Click below to explore more details on WIN SOURCE:

 [View 9677242009 on WIN SOURCE](#)

 [FAIR-RITE PRODUCTS](#) Information

Optimize Your Supply Chain with WIN SOURCE Solutions

-  Global Sourcing Solution
-  Obsolete Management
-  Cost Control Management
-  Shortage Management
-  Alternative Solution
-  Excess Inventory Management