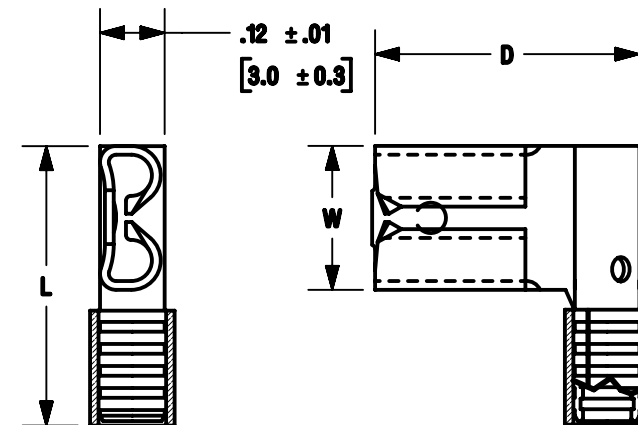


THIS COPY IS PROVIDED ON A RESTRICTED BASIS AND IS NOT TO BE USED IN ANY WAY DETRIMENTAL TO THE INTERESTS OF PANDUIT CORP.

PANDUIT PART #	TAB SIZE	WIRE RANGE		DIMENSIONS in. [mm]		
		ENGLISH	METRIC	L ± .03 [0,8]	W ± .01 [0,3]	D ± .02 [0,5]
DR18-250	.250 X .032 [6,3 X 0,8]	22-18	0,5-1,0	.57 [14,5]	.30 [7,6]	.54 [13,7]
DR14-250*	.250 X .032 [6,3 X 0,8]	16-14	1,5-2,5	.57 [14,5]	.30 [7,6]	.55 [14,0]
DR10-250	.250 X .032 [6,3 X 0,8]	12-10	4,0-6,0	.61 [15,5]	.30 [7,6]	.57 [14,5]



* UL RECOGNIZED ONLY

NOTES:

- USED FOR:
 - STRANDED COPPER WIRE ONLY
 - 302°F [150°C] MAX. OPERATING TEMPERATURE
 - 10A. MAX. (DR14-250 ONLY)
- MATERIAL:
 - STAMPING: .018 [0,46] TIN PLATED BRASS
 - SLEEVE: TIN PLATED BRASS
- INSTALLATION TOOLS:
 - UL LISTED AND CSA CERTIFIED: CT-100A, CT-200, CT-600-A W/CT-570CH, CT-1570, CT-1701 (DR10-250 ONLY), CT-2500 W/CT-2570CH, CT-600A
 - PANDUIT APPROVED: CT-160, CT-260
- WIRE STRIP LENGTH: 9/32 [7,1]
- SEE www.panduit.com FOR PACKAGE QUANTITIES INDICATED BY PART NUMBER SUFFIX
- DIMENSIONS IN BRACKETS ARE METRIC EQUIVALENT
- FIRST INSERTION FORCE: 12 Lb [53 N] MAXIMUM
FIRST WITHDRAWAL FORCE: 12 Lb [53 N] MAXIMUM
6 Lb [27 N] MINIMUM



LISTED
20H3
E78522



CERTIFIED
LR31212



RECOGNIZED
E78522

TITLE			
NON-INSULATED, SLEEVED RIGHT ANGLE FEMALE DISCONNECT (250 SERIES)			
CUSTOMER DRAWING			
ITEM REVISION NAME		N41331BA/12	
DATASET FILE NAME		N41331BA_DC_12A	
UNLESS OTHERWISE SPECIFIED, DIMENSIONAL TOLERANCES ARE: IN [mm]		MATERIAL:	
.x ± .1 [2.54] .xx ± .01 [.25]		SEE NOTES	
.xxx ± .005 [.127] ANGLES ± 5 °		DRAWING NUMBER:	
THIRD ANGLE PROJECTION		A41331	
DRAWN BY	DATE	CHK	SCALE
DAW	-	-	N.T.S.
SHEET 1 OF 1			SIZE
			A

12	9/16/20	BWG	HPR	JADE	CORRECTED SECTIONED VIEWS.	088768/00
----	---------	-----	-----	------	----------------------------	-----------

REV	DATE	BY	CHK	APR	DESCRIPTION	ECN

D101000A/12

Looking for pricing, stock, or lifecycle information?

Click below to explore more details on WIN SOURCE:

 [View DR14-250-M on WIN SOURCE](#)

 [Panduit Corp Information](#)

Optimize Your Supply Chain with WIN SOURCE Solutions

-  Global Sourcing Solution
-  Obsolete Management
-  Cost Control Management
-  Shortage Management
-  Alternative Solution
-  Excess Inventory Management