



**THE DATASHEET OF
LSHM-110-03.0-F-DV-A-S-K-TR**



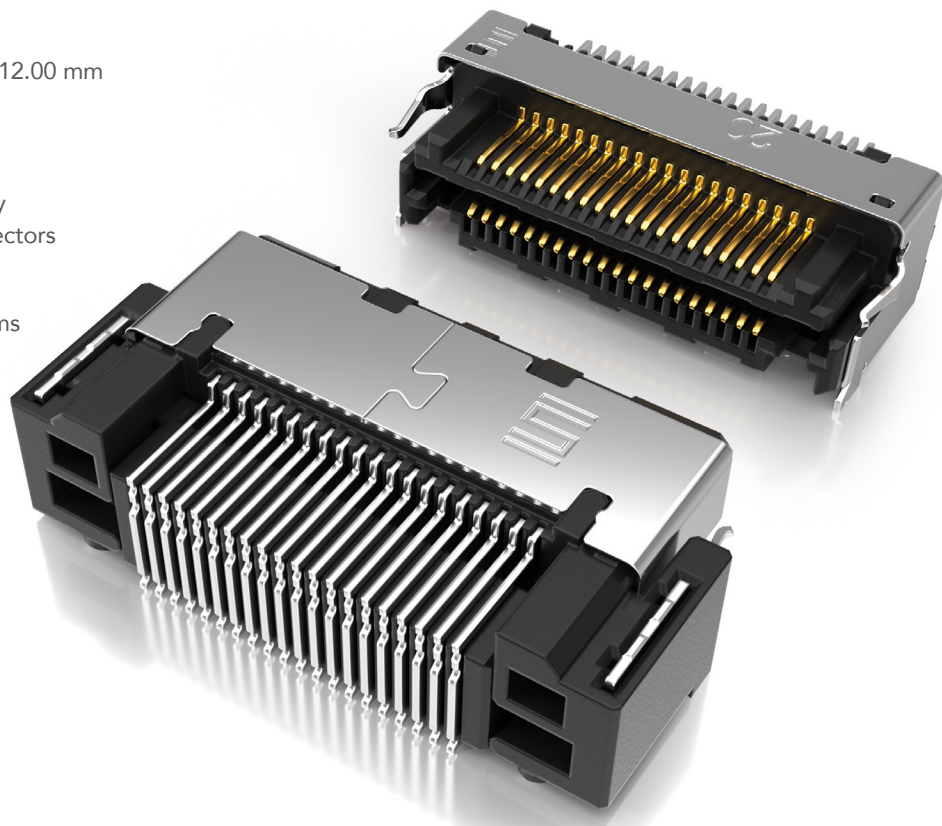
FINE PITCH SELF MATING CONNECTORS

0.50 mm, 0.635 mm and 0.80 mm PITCH

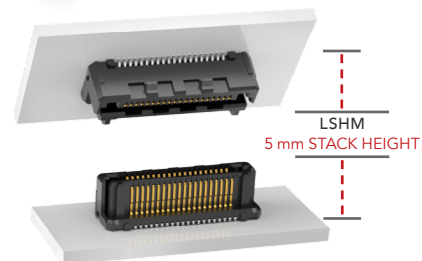
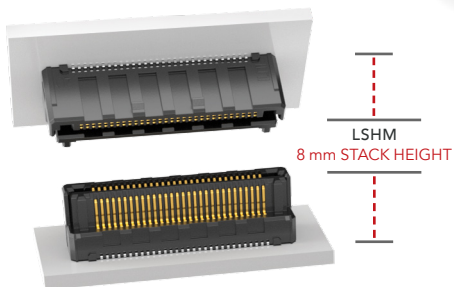
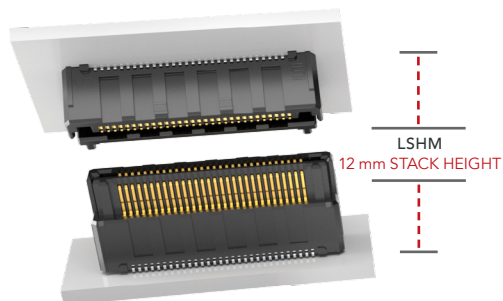
FEATURES & BENEFITS

- Ten stack height options from 5.00 mm to 12.00 mm
- 0.50 mm, 0.635 mm or 0.80 mm pitches
- Audible click when mated
- Mating and unmating forces approximately 4-6x greater than typical micro pitch connectors
- Self-mating system reduces inventory cost
- Parallel, perpendicular and coplanar systems
- Shielded and lubricated options
- Severe Environment Testing qualified (LSHM); aligns with MIL-DTL-55302.

Visit samtec.com/set



SLIM BODY DESIGNS (40 total positions each)



KEY SPECIFICATIONS

| INSULATOR MATERIAL | CONTACT MATERIAL | PLATING | OPERATING TEMP RANGE | CURRENT RATING | VOLTAGE RATING | SMT COPLANARITY | LEAD-FREE SOLDERABLE |
|--------------------|------------------|----------------------------------|----------------------|--|--|---------------------|----------------------|
| Black LCP | Phosphor Bronze | Au or Sn over 50 μ" (1.27 μm) Ni | -55 °C to +125 °C | LSHM: 2.0 A per pin LSS: 1.7 A per pin LSEM: 1.8 A per pin | LSHM: 160 VAC/226 VDC LSS: 300 VAC/424 VDC LSEM: 225 VAC/318 VDC | (0.10 mm) .004" max | Yes |

(0.50 mm) .0197" PITCH • RUGGED HERMAPHRODITIC CONNECTORS

LSHM - **1** **NO. PINS PER ROW** - **LEAD STYLE** - **PLATING OPTION** - **TAIL OPTION** - **A** - **SHIELD OPTION** - **K** - **"X"R**

**05, 10, 20,
30, 40, 50**

(Vertical)
**Specify
LEAD
STYLE
from
chart**

-F
= Gold flash
on contact,
Matte Tin on tail

-DV
= Vertical

-S
= With
Shield

-K
= (3.50 mm)
.138" DIA
Polyimide
film Pick &
Place Pad

-TR
= Tape &
Reel

LSHM

Board Mates:

LSHM

Cable Mates:

HLCD

(Right-angle)

-01

= Standard

(Right-angle)

-L1

= Lubricated

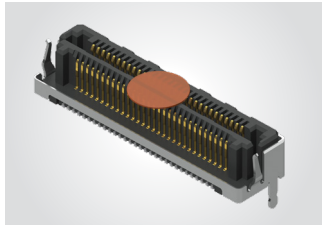
-L
= 10 μ" (0.25 μm)
Gold on contact,
Matte Tin on tail

-DH
= Right-angle
(Lead style -01
& -L1 only)

-N
= Without
Shield

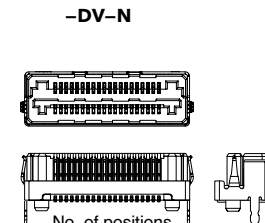
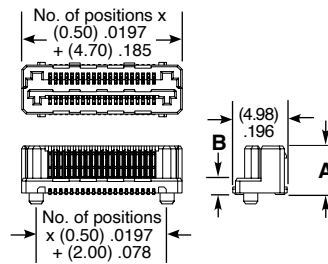
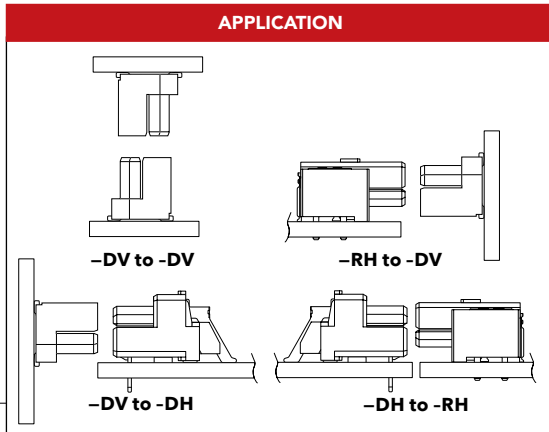
-RH
= Reverse
Right-angle
(Lead style -01
& -L1 only)

-FR
= Full Reel
Tape & Reel
(must order
maximum
quantity
per reel;
contact
Samtec for
quantity
breaks)

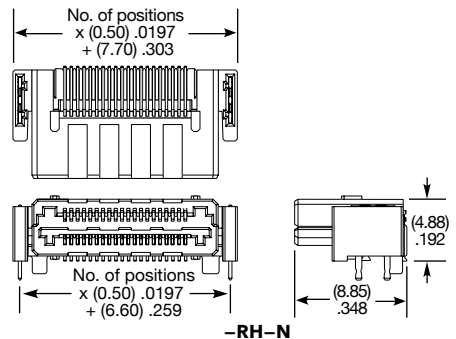
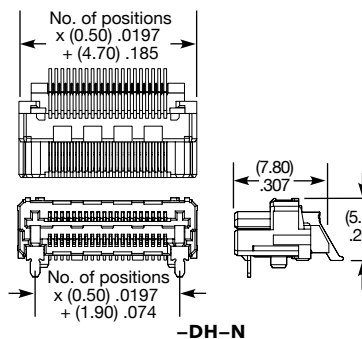
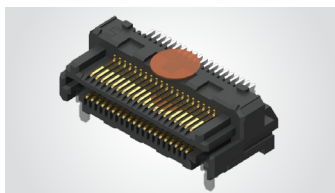
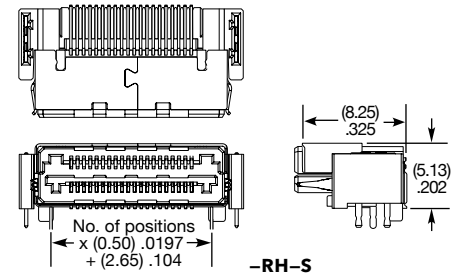
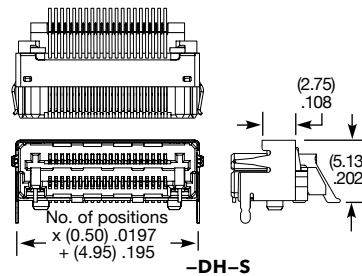
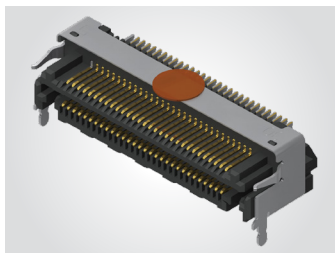


| LEAD STYLE | MATED HEIGHT * |
|---------------|----------------|
| -02.5 & -02.5 | (5.00) .196 |
| -02.5 & -03.0 | (5.50) .217 |
| -03.0 & -03.0 | (6.00) .236 |
| -02.5 & -04.0 | (6.50) .256 |
| -03.0 & -04.0 | (7.00) .276 |
| -04.0 & -04.0 | (8.00) .315 |
| -02.5 & -06.0 | (8.50) .335 |
| -03.0 & -06.0 | (9.00) .354 |
| -04.0 & -06.0 | (10.00) .394 |
| -06.0 & -06.0 | (12.00) .472 |

*Processing conditions will affect mated height.



| LEAD STYLE (STANDARD) | LEAD STYLE (LUBRICATED) | A | B |
|-----------------------|-------------------------|-------------|-------------|
| -02.5 | -L2.5 | (3.95) .156 | (1.00) .039 |
| -03.0 | -L3.0 | (4.45) .175 | (1.50) .059 |
| -04.0 | -L4.0 | (5.45) .215 | (2.50) .098 |
| -06.0 | -L6.0 | (7.45) .293 | (4.50) .177 |





Notes:
Severe Environment Testing qualified; aligns with MIL-DTL-55302. Visit samtec.com/set

Some lengths, styles and options are non-standard, non-returnable.

View complete specifications at: samtec.com?LSHM

Looking for pricing, stock, or lifecycle information?

Click below to explore more details on WIN SOURCE:

-  [View LSHM-110-03.0-F-DV-A-S-K-TR on WIN SOURCE](#)
-  [Samtec Inc. Information](#)

Optimize Your Supply Chain with WIN SOURCE Solutions

-  Global Sourcing Solution
-  Obsolete Management
-  Cost Control Management
-  Shortage Management
-  Alternative Solution
-  Excess Inventory Management