



**THE DATASHEET OF  
29F0418-1SR-10**



# 29F0418-1SR-10

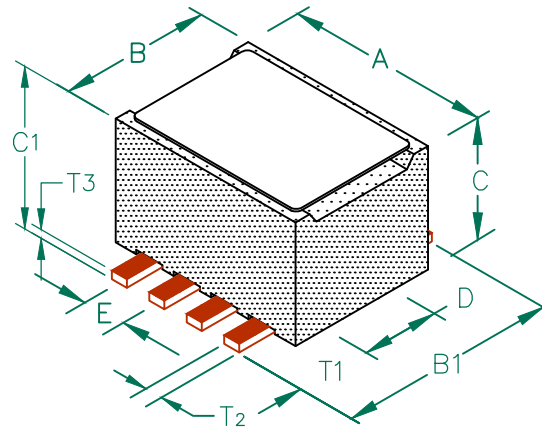
**UNCONTROLLED DOCUMENT**

PHYSICAL DIMENSIONS:

|    |             |                                |
|----|-------------|--------------------------------|
| A  | 6.10 [.240] | + 0.13 [.005]                  |
| B  | 4.50 [.177] | + 0.08 [.003]<br>- 0.10 [.004] |
| B1 | 7.04 [.277] | + MAX                          |
| C  | 4.19 [.165] | + 0.10 [.004]                  |
| C1 | 4.83 [.190] | + MAX                          |
| D  | 2.24 [.088] | + 0.08 [.003]                  |
| E  | 1.27 [.050] | + 0.13 [.005]                  |

WIRE DIMENSIONS:

|    |             |               |
|----|-------------|---------------|
| T1 | 2.16 [.085] | + 0.25 [.010] |
| T2 | 0.50 [.020] | + TYP.        |
| T3 | 0.25 [.010] | + TYP.        |

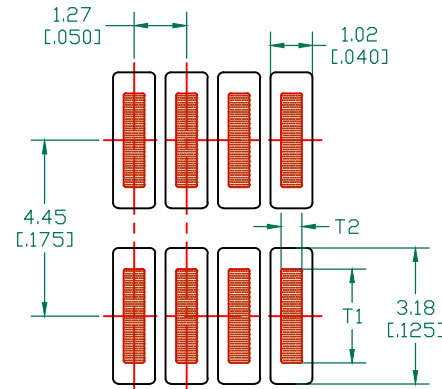


| ELECTRICAL CHARACTERISTICS: |                   |            |               |
|-----------------------------|-------------------|------------|---------------|
|                             | Z @ 100MHz<br>(Ω) | DCR<br>(Ω) | Rated Current |
| Nominal                     | 119               |            |               |
| Minimum                     | 90                |            |               |
| Maximum                     | 149               | 0.01       | 6,000 mA      |

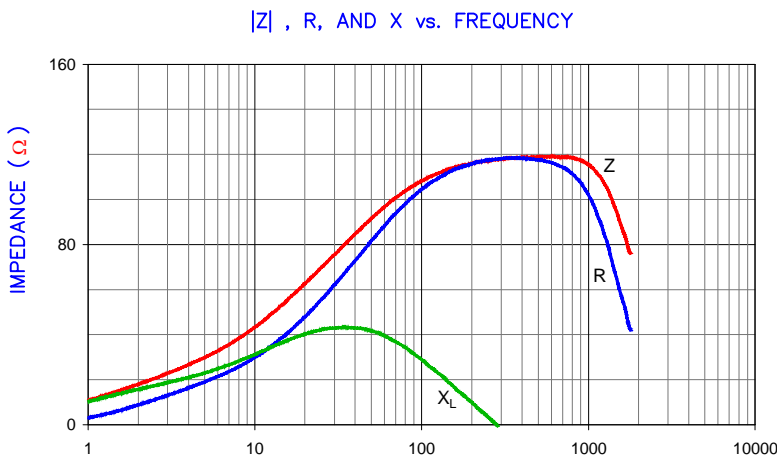
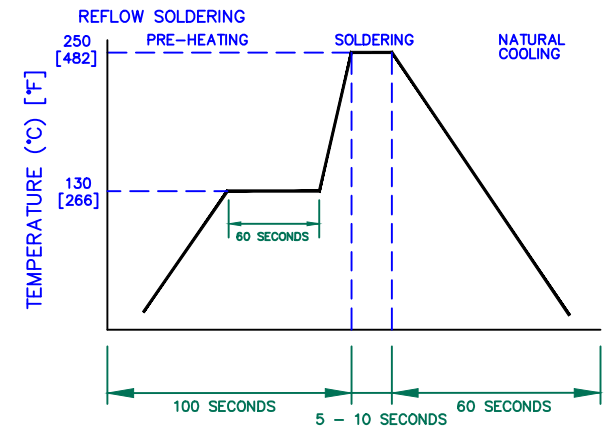
NOTES: UNLESS OTHERWISE SPECIFIED

1. TAPED AND REELED per CURRENT EIA SPECIFICATIONS 13" REELS, 900 PCS/REEL.
2. COMPONENTS SHOULD BE ADEQUATELY PREHEATED BEFORE SOLDERING.
3. REF. CARRIER TAPE SPECIFICATION # CART 418-13.
4. TERMINATION FINISH IS 100% TIN.
5. OPERATION TEMPERATURE (INCLUDING SELF-HEATING): -40 ~ +125°C.

LAND PATTERNS FOR REFLOW SOLDERING



RECOMMENDED SOLDERING CONDITIONS



Z R X<sub>L</sub>



|                                |                                 |          |     |   |                                 |
|--------------------------------|---------------------------------|----------|-----|---|---------------------------------|
| DIMENSIONS ARE IN mm (INCHES). |                                 |          |     | This print is the property of Laird Tech. and is loaned in confidence subject to return upon request and with the understanding that no copies shall be made without the written consent of Laird Tech. All rights to design or invention are reserved. |                                 |
| E                              | ADD NOTE 5                      | 08/30/12 | QU  | PROJECT/PART NUMBER:<br><b>29F0418-1SR-10</b>   |                                 |
| D                              | UPDATE COMPANY LOGO             | 10/21/08 | JRK | REV   | PART TYPE:<br><b>E ASSEMBLY</b> |
| C                              | UPDATE COMPANY LOGO             | 05/01/07 | JRK | DRAWN BY:<br>JRK  |                                 |
| B                              | CHANGE TOLS ON E DIMS, ADD ROHS | 03/19/07 | JRK | DATE:   | 04/27/04                        |
| A                              | ORIGINAL DRAFT                  | 04/27/04 | JRK | SCALE:  | NTS                             |
| REV                            | DESCRIPTION                     | DATE     | INT | CAD #   | 29F0418-1SR-10-E-1              |
|                                |                                 |          |     | SHEET:  | 1 of 2                          |



## Looking for pricing, stock, or lifecycle information?

Click below to explore more details on WIN SOURCE:

- ⊖ [View 29F0418-1SR-10 on WIN SOURCE](#)
- ⊖ [Laird-Signal Integrity Products Information](#)

## Optimize Your Supply Chain with WIN SOURCE Solutions

- ✓ Global Sourcing Solution
- ✓ Obsolete Management
- ✓ Cost Control Management
- ✓ Shortage Management
- ✓ Alternative Solution
- ✓ Excess Inventory Management