



This version (03 Jul 2018 04:59) was *approved* by Ramparo. The Previously approved version (06 Jun 2018 03:02) is available. 🌐

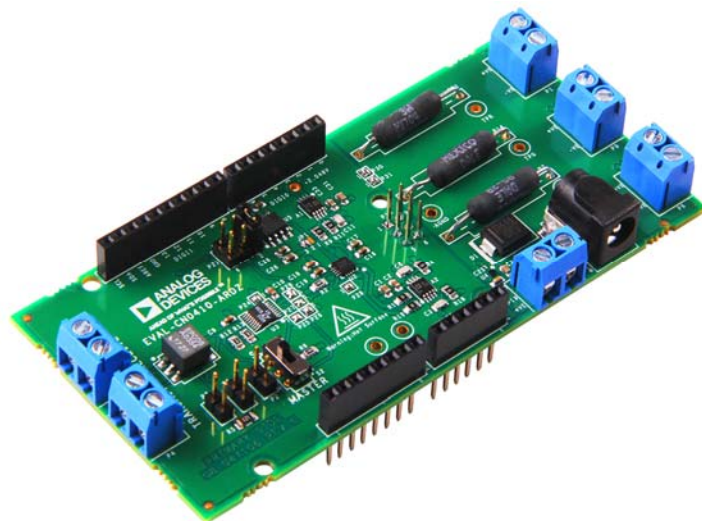
## -Table of Contents

- EVAL-CN0410-ARDZ Shield
  - Connectors and Jumper Configurations
    - Chip Select
    - LED Connectors
    - CFTL-LED-Bar Connectors
    - Transmit/Receive Connector
  - Schematic, PCB Layout, Bill of Materials
  - Software

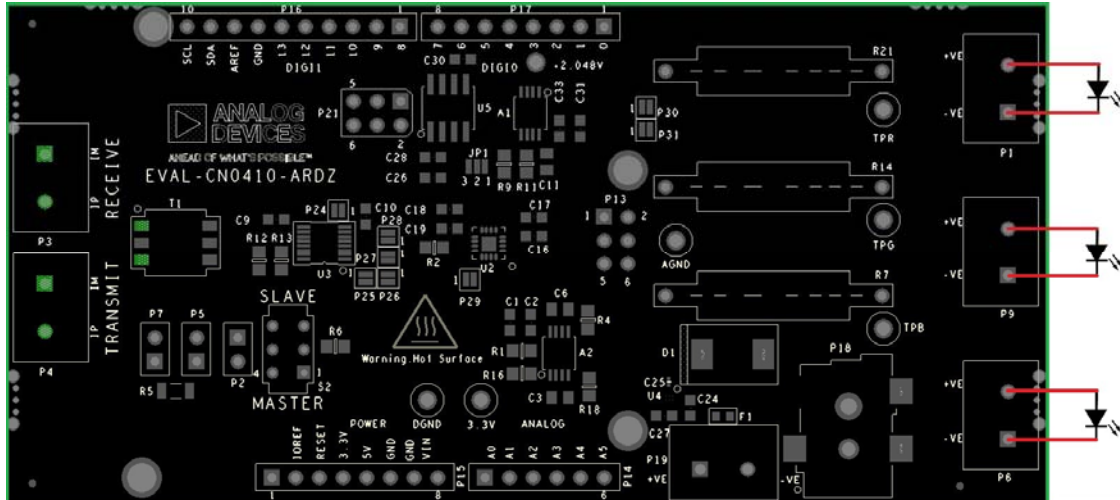
# EVAL-CN0410-ARDZ Shield

CN0410 is an Arduino compatible shield that is optimized for smart agriculture to control current passing through LED's. The CN0410 is used along the the CFTL-LED Bar that has LED's with specific wavelengths that plants utilize.

The circuit shown below is a complete 3-channel single-supply, 16-bit unbuffered voltage output DAC that maintains  $\pm 2$  LSB integral and differential nonlinearity by utilizing a CMOS DAC. This circuit has a voltage to current conversion that controls the amount of current passing through an LED by using a MOSFET in its configuration. The circuit also has an isoSPI repeater that allows multiple boards to be controlled with a single master.







### Recommended LED's

- Lumileds Red LED- **LXM5-PD01**
- Lumileds Green LED- **LXML-PM01-0080**
- Lumileds Blue LED- **LXML-PB02**
- Lumileds Datasheet

The circuit have been tested with CFTL-LED-BAR with up to 500mA of current which heats the board up to the rated temperature of the FR4 material used in the fabrication of the board.

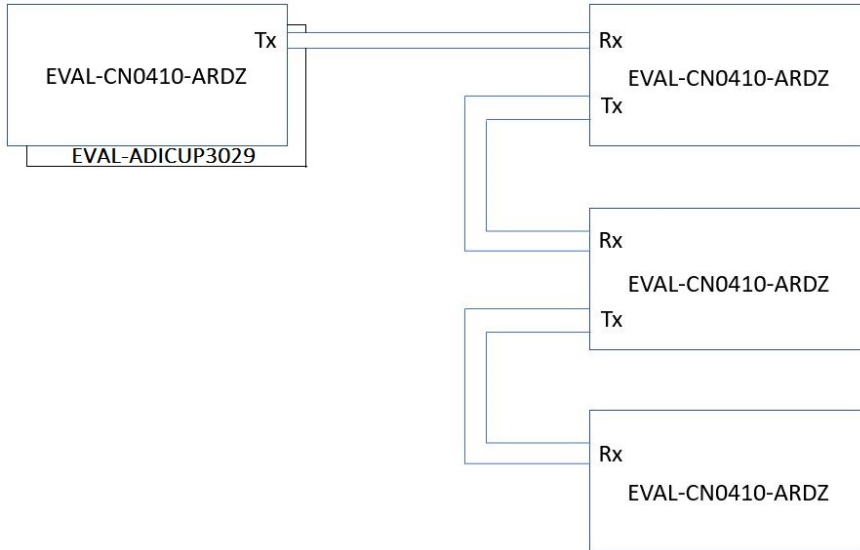
It is recommended to use cooling fans when using currents above 500mA per channel.

### CFTL-LED-Bar Connectors

EVAL-CN0410-ARDZ	CFTL-LED-BAR
P1.1	P1.1
P1.2	P1.2
P6.1	P9.1
P6.2	P9.2
P9.1	P5.1
P9.2	P5.2

## Transmit/Receive Connector

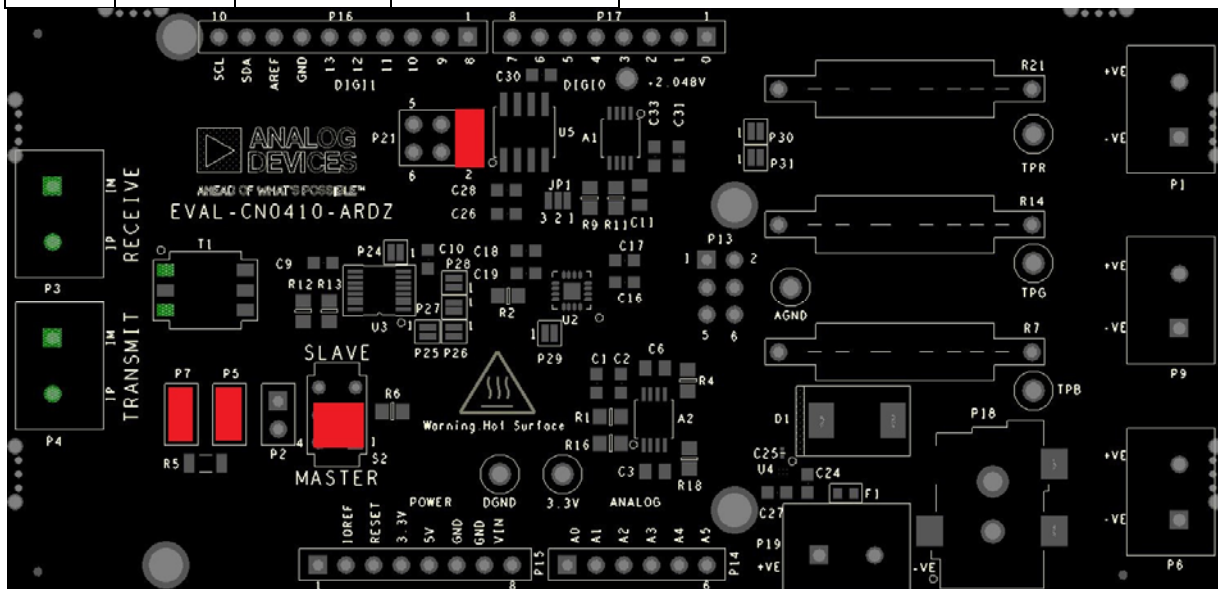
LT6820 allows for SPI communications protocol to be converted to pulses for long distance transmission. The transmit and receive connectors can be used to connect boards for up to 100 meters in length. Multiple boards can be connected with a single master using its multi-drop configuration, attaching board is series to each other.



## Master Mode Settings

Refer to the table below to set the board as a master/transmitter:

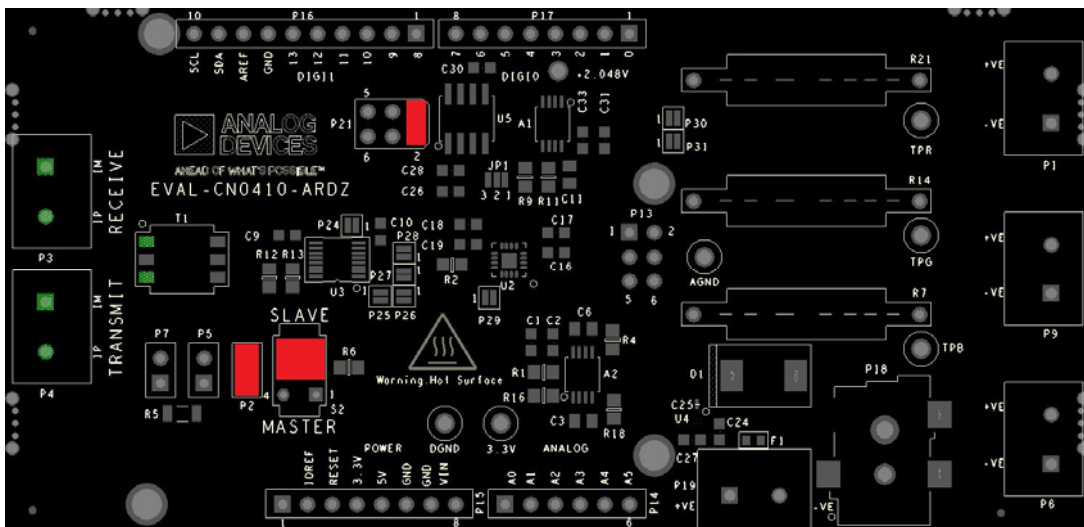
P2	P5	P7	S2
Open	Shorted	Shorted	Master Position



## Slave Mode Settings

Refer to the table below to set the board as a slave:

P2	P5	P7	S2
Shorted	Open	Open	Slave Position



A transformer or a pair of transformers are used to isolate the signals between the two LTC6820's and must be terminated by a resistor. Only the master and the last slave on the transmission line must be terminated by shorting connectors P5 and P7

## Schematic, PCB Layout, Bill of Materials EVAL-CN0410-ARDZ Design & Integration Files

- Schematics
- PCB Layout
- Bill of Materials
- Allegro Project

## Software

- ADICUP3029 + CN0410

## End of Document

<https://wiki.analog.com/resources/eval/user-guides/eval-adicup3029/hardware/cn0410> 9-6-18

## Looking for pricing, stock, or lifecycle information?

Click below to explore more details on WIN SOURCE:

- ⊖ [View EVAL-CN0370-PMDZ on WIN SOURCE](#)
- ⊖ [Analog Devices Inc. Information](#)

## Optimize Your Supply Chain with WIN SOURCE Solutions

- ✓ Global Sourcing Solution
- ✓ Obsolete Management
- ✓ Cost Control Management
- ✓ Shortage Management
- ✓ Alternative Solution
- ✓ Excess Inventory Management