

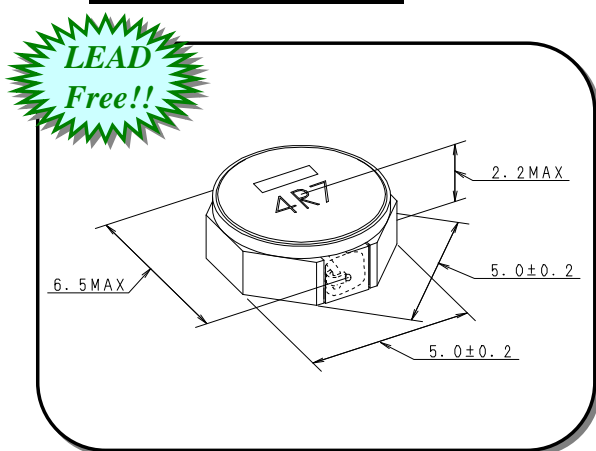


**THE DATASHEET OF
LTF5022T-4R7N2R0-D**



LTF 5022-D Series SMD Power Inductor

Component Image Fig



Unit:mm

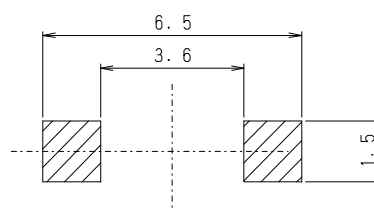
Feature

- a) Miniature Size :
Mount Area : 5.0mm x 5.0mm
Low Profile : 2.2mm Max. Height
- b) Generic use for portable DC/DC Converter Line.
- c) Low Profile as a 2.2mm Height.
- d) High Rated DC Current.
- e) This Product is not used any of the LEAD Materials.
- f) Ferrite shielded component.
- g) Automatic Mounting in Tape & Reel Package.
- h) Qualified acc. AEC-Q200

Applications :

Automotive

Recommended Land Pattern



Electrical Specification

TDK Identification	Inductance[uH]		Test Freq. (MHz)	DC Resistance[ohm]		Rated DC Current[A]	
		Tol. (%)		Spec. (max.)	(Typ.)	Idc 1 (max.)	Idc 2 (Typ.)
LTF5022T- 1R2N3R4-D	1.2	+/-30%	1	0.031	0.025	3.87	3.43
LTF5022T- 1R8N3R1-D	1.8	+/-30%	1	0.037	0.030	3.28	3.12
LTF5022T- 2R2N2R8-D	2.2	+/-30%	1	0.043	0.036	2.84	2.88
LTF5022T- 3R3N2R5-D	3.3	+/-30%	1	0.050	0.041	2.51	2.68
LTF5022T- 4R7N2R0-D	4.7	+/-30%	1	0.074	0.062	2.03	2.18
LTF5022T- 6R8N1R7-D	6.8	+/-30%	1	0.11	0.091	1.70	1.80
LTF5022T- 100M1R3-D	10	+/-20%	1	0.16	0.13	1.37	1.51
LTF5022T- 150M1R1-D	15	+/-20%	1	0.24	0.20	1.15	1.22
LTF5022T- 220MR95-D	22	+/-20%	1	0.34	0.28	0.95	1.02
LTF5022T- 330MR77-D	33	+/-20%	1	0.49	0.41	0.77	0.85
LTF5022T- 470MR66-D	47	+/-20%	1	0.70	0.58	0.66	0.71
LTF5022T- 680MR54-D	68	+/-20%	1	1.03	0.86	0.54	0.59
LTF5022T- 101MR45-D	100	+/-20%	1	1.28	1.07	0.45	0.53



Note) Idc 1 : Depend on the Inductance Saturation. (-30% Reduction from Nominal L Value)

Idc 2 : Depend on the Self Temperature Rise (40 deg.C Typ.)

Operating Temperature Range : -40deg. C ~ +150deg.C (including Self Temp. Rise)

Looking for pricing, stock, or lifecycle information?

Click below to explore more details on WIN SOURCE:

-  [View LTF5022T-4R7N2R0-D on WIN SOURCE](#)
-  [TDK Corporation Information](#)

Optimize Your Supply Chain with WIN SOURCE Solutions

-  Global Sourcing Solution
-  Obsolete Management
-  Cost Control Management
-  Shortage Management
-  Alternative Solution
-  Excess Inventory Management