



**THE DATASHEET OF  
NC7SZ32FHX**



# NC7SZ32

## TinyLogic UHS Two-Input OR Gate

### Description

The NC7SZ32 is a single two-input OR gate from ON Semiconductor's Ultra-High Speed (UHS) series of TinyLogic. The device is fabricated with advanced CMOS technology to achieve ultra-high speed with high output drive while maintaining low static power dissipation over a broad  $V_{CC}$  operating range. The device is specified to operate over the 1.65 V to 5.5 V  $V_{CC}$  operating range. The inputs and output are high impedance when  $V_{CC}$  is 0 V. Inputs tolerate voltages up to 5.5 V, independent of  $V_{CC}$  operating voltage.

### Features

- Ultra-High Speed:  $t_{PD}$  2.4 ns (Typical) into 50 pF at 5 V  $V_{CC}$
- High Output Drive:  $\pm 24$  mA at 3 V  $V_{CC}$
- Broad  $V_{CC}$  Operating Range: 1.65 V to 5.5 V
- Matches Performance of LCX Operated at 3.3 V  $V_{CC}$
- Power Down High-Impedance Inputs / Outputs
- Over-Voltage Tolerance Inputs Facilitate 5 V to 3 V Translation
- Proprietary Noise / EMI Reduction Circuitry
- Ultra-Small MicroPak™ Packages
- Space-Saving SC-74A and SC-88A Packages
- These Devices are Pb-Free, Halogen Free/BFR Free and are RoHS Compliant

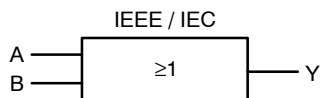


Figure 1. Logic Symbol



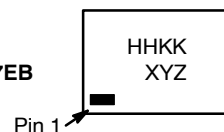
ON Semiconductor®

[www.onsemi.com](http://www.onsemi.com)

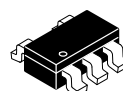
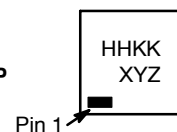
### MARKING DIAGRAMS



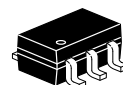
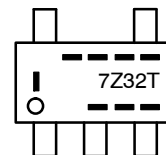
SIP6  
CASE 127EB



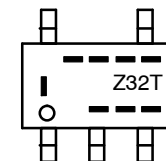
UDFN6  
CASE 517DP



SC-74A  
CASE 318BQ



SC-88A  
CASE 419AC-01



HH, 7Z32, Z32 = Specific Device Code  
 KK = 2-Digit Lot Run Traceability Code  
 XY = 2-Digit Date Code Format  
 Z = Assembly Plant Code  
 M = Data Code  
 T = Die Run Code  
 --- = Year Coding Scheme  
 |--- = Plant Code Identifier  
 --- = Eight-Week Datacoding Scheme

### ORDERING INFORMATION

See detailed ordering, marking and shipping information in the package dimensions section on page 6 of this data sheet.

# NC7SZ32

## Pin Configurations

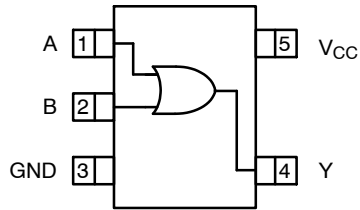


Figure 2. SC-88A and SC-74A (Top View)

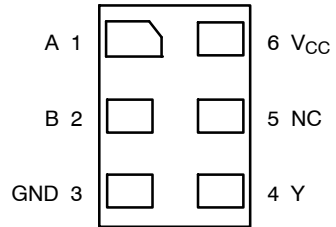


Figure 3. MicroPak (Top Through View)

### PIN DEFINITIONS

| Pin # SC-88A / SC74A | Pin # MicroPak | Name            | Description    |
|----------------------|----------------|-----------------|----------------|
| 1                    | 1              | A               | Input          |
| 2                    | 2              | B               | Input          |
| 3                    | 3              | GND             | Ground         |
| 4                    | 4              | Y               | Output         |
| 5                    | 6              | V <sub>CC</sub> | Supply Voltage |
|                      | 5              | NC              | No Connect     |

### FUNCTION TABLE (Y = A + B)

| Inputs |   | Output |
|--------|---|--------|
| A      | B | Y      |
| L      | L | L      |
| L      | H | H      |
| H      | L | H      |
| H      | H | H      |

H = HIGH Logic Level  
L = LOW Logic Level

**ABSOLUTE MAXIMUM RATINGS**

| Symbol                              | Parameter   |   | Min  | Max  | Unit |
|-------------------------------------|---|---|------|------|------|
| V <sub>CC</sub>                     | Supply Voltage                                    |   | -0.5 | 6.0  | V    |
| V <sub>IN</sub>                     | DC Input Voltage                                  |   | -0.5 | 6.0  | V    |
| V <sub>OUT</sub>                    | DC Output Voltage                                 |   | -0.5 | 6.0  | V    |
| I <sub>IK</sub>                     | DC Input Diode Current                            | V <sub>IN</sub> < -0.5 V                      | -    | -50  | mA   |
|                                     |   | V <sub>IN</sub> > 6.0 V                       | -    | +20  |      |
| I <sub>OK</sub>                     | DC Output Diode Current                           | V <sub>OUT</sub> < -0.5 V                     | -    | -50  | mA   |
|                                     |   | V <sub>OUT</sub> > 6 V, V <sub>CC</sub> = GND | -    | +20  |      |
| I <sub>OUT</sub>                    | DC Output Current                                 |   | -    | ±50  | mA   |
| I <sub>CC</sub> or I <sub>GND</sub> | DC V <sub>CC</sub> or Ground Current              |   | -    | ±50  | mA   |
| T <sub>STG</sub>                    | Storage Temperature Range                         |   | -65  | +150 | °C   |
| T <sub>J</sub>                      | Junction Temperature Under Bias                   |   | -    | +150 | °C   |
| T <sub>L</sub>                      | Junction Lead Temperature (Soldering, 10 Seconds) |   | -    | +260 | °C   |
| P <sub>D</sub>                      | Power Dissipation in Still Air                    | SC-74A  | -    | 225  | mW   |
|                                     |   | SC-88A-5                                      | -    | 190  |      |
|                                     |   | MicroPak-6                                    | -    | 327  |      |
|                                     |   | MicroPak2™-6                                  | -    | 327  |      |
| ESD                                 | Human Body Model, JEDEC: JESD22-A114              |   | -    | 4000 | V    |
|                                     | Charge Device Model, JEDEC: JESD22-C101           |   | -    | 2000 |      |

Stresses exceeding those listed in the Maximum Ratings table may damage the device. If any of these limits are exceeded, device functionality should not be assumed, damage may occur and reliability may be affected.

**RECOMMENDED OPERATING CONDITIONS**

| Symbol                          | Parameter                     | Conditions                            | Min  | Max             | Unit |
|---------------------------------|-------------------------------|---------------------------------------|------|-----------------|------|
| V <sub>CC</sub>                 | Supply Voltage Operating      |                                       | 1.65 | 5.50            | V    |
|                                 | Supply Voltage Data Retention |                                       | 1.50 | 5.50            |      |
| V <sub>IN</sub>                 | Input Voltage                 |                                       | 0    | 5.5             | V    |
| V <sub>OUT</sub>                | Output Voltage                |                                       | 0    | V <sub>CC</sub> | V    |
| T <sub>A</sub>                  | Operating Temperature         |                                       | -40  | +85             | °C   |
| t <sub>r</sub> , t <sub>f</sub> | Input Rise and Fall Times     | V <sub>CC</sub> = 1.8 V, 2.5 V ±0.2 V | 0    | 20              | ns/V |
|                                 |                               | V <sub>CC</sub> = 3.3 V ±0.3 V        | 0    | 10              |      |
|                                 |                               | V <sub>CC</sub> = 5.0 V ±0.5 V        | 0    | 5               |      |
| θ <sub>JA</sub>                 | Thermal Resistance            | SC-74A                                | -    | 555             | °C/W |
|                                 |                               | SC-88A-5                              | -    | 659             |      |
|                                 |                               | MicroPak-6                            | -    | 382             |      |
|                                 |                               | MicroPak2-6                           | -    | 382             |      |

Functional operation above the stresses listed in the Recommended Operating Ranges is not implied. Extended exposure to stresses beyond the Recommended Operating Ranges limits may affect device reliability.

1. Unused inputs must be held HIGH or LOW. They may not float.

# NC7SZ32

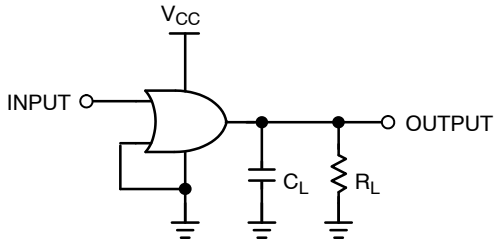
## DC ELECTRICAL CHARACTERISTICS

| Symbol           | Parameter                 | V <sub>CC</sub> (V) | Conditions   | T <sub>A</sub> = +25°C |      |                      | T <sub>A</sub> = -40 to +85°C |                      | Unit |
|------------------|---------------------------|---------------------|--|------------------------|------|----------------------|-------------------------------|----------------------|------|
|                  |                           |                     |  | Min                    | Typ  | Max                  | Min                           | Max                  |      |
| V <sub>IH</sub>  | HIGH Level Input Voltage  | 1.65 to 1.95        |  | 0.65 V <sub>CC</sub>   | -    | -                    | 0.65 V <sub>CC</sub>          | -                    | V    |
|                  |                           | 2.30 to 5.50        |  | 0.70 V <sub>CC</sub>   | -    | -                    | 0.70 V <sub>CC</sub>          | -                    |      |
| V <sub>IL</sub>  | LOW Level Input Voltage   | 1.65 to 1.95        |  | -                      | -    | 0.35 V <sub>CC</sub> | -                             | 0.35 V <sub>CC</sub> | V    |
|                  |                           | 2.30 to 5.50        |  | -                      | -    | 0.30 V <sub>CC</sub> | -                             | 0.30 V <sub>CC</sub> |      |
| V <sub>OH</sub>  | HIGH Level Output Voltage | 1.65                | V <sub>IN</sub> = V <sub>IH</sub> ,<br>I <sub>OH</sub> = -100 μA | 1.55                   | 1.65 | -                    | 1.55                          | -                    | V    |
|                  |                           | 1.80                |  | 1.70                   | 1.80 | -                    | 1.70                          | -                    |      |
|                  |                           | 2.30                |  | 2.20                   | 2.30 | -                    | 2.20                          | -                    |      |
|                  |                           | 3.00                |  | 2.90                   | 3.00 | -                    | 2.90                          | -                    |      |
|                  |                           | 4.50                |  | 4.40                   | 4.50 | -                    | 4.40                          | -                    |      |
|                  |                           | 1.65                | I <sub>OH</sub> = -4 mA  | 1.29                   | 1.52 | -                    | 1.29                          | -                    |      |
|                  |                           | 2.30                | I <sub>OH</sub> = -8 mA  | 1.90                   | 2.15 | -                    | 1.90                          | -                    |      |
|                  |                           | 3.00                | I <sub>OH</sub> = -16 mA   | 2.40                   | 2.80 | -                    | 2.40                          | -                    |      |
|                  |                           | 3.00                | I <sub>OH</sub> = -24 mA   | 2.30                   | 2.68 | -                    | 2.30                          | -                    |      |
|                  |                           | 4.50                | I <sub>OH</sub> = -32 mA   | 3.80                   | 4.20 | -                    | 3.80                          | -                    |      |
| V <sub>OL</sub>  | LOW Level Output Voltage  | 1.65                | V <sub>IN</sub> = V <sub>IL</sub> ,<br>I <sub>OL</sub> = 100 μA  | -                      | 0.00 | 0.10                 | -                             | 0.10                 | V    |
|                  |                           | 1.80                |  | -                      | 0.00 | 0.10                 | -                             | 0.10                 |      |
|                  |                           | 2.30                |  | -                      | 0.00 | 0.10                 | -                             | 0.10                 |      |
|                  |                           | 3.00                |  | -                      | 0.00 | 0.10                 | -                             | 0.10                 |      |
|                  |                           | 4.50                |  | -                      | 0.00 | 0.10                 | -                             | 0.10                 |      |
|                  |                           | 1.65                | I <sub>OL</sub> = 4 mA   | -                      | 0.80 | 0.24                 | -                             | 0.24                 |      |
|                  |                           | 2.30                | I <sub>OL</sub> = 8 mA   | -                      | 0.10 | 0.30                 | -                             | 0.30                 |      |
|                  |                           | 3.00                | I <sub>OL</sub> = 16 mA  | -                      | 0.15 | 0.40                 | -                             | 0.40                 |      |
|                  |                           | 3.00                | I <sub>OL</sub> = 24 mA  | -                      | 0.22 | 0.55                 | -                             | 0.55                 |      |
|                  |                           | 4.50                | I <sub>OL</sub> = 32 mA  | -                      | 0.22 | 0.55                 | -                             | 0.55                 |      |
| I <sub>IN</sub>  | Input Leakage Current     | 1.65 to 5.50        | V <sub>IN</sub> = 5.5 V, GND                                     | -                      | -    | ±1                   | -                             | ±10                  | μA   |
| I <sub>OFF</sub> | Power Off Leakage Current | 0                   | V <sub>IN</sub> or V <sub>OUT</sub> = 5.5 V                      | -                      | -    | 1                    | -                             | 10                   | μA   |
| I <sub>CC</sub>  | Quiescent Supply Current  | 1.65 to 5.50        | V <sub>IN</sub> = 5.5 V, GND                                     | -                      | -    | 2.0                  | -                             | 20                   | μA   |

AC ELECTRICAL CHARACTERISTICS

| Symbol                              | Parameter  | V <sub>CC</sub> (V) | Conditions  | T <sub>A</sub> = +25°C |     |      | T <sub>A</sub> = -40 to +85°C |      | Unit |
|-------------------------------------|--|---------------------|---|------------------------|-----|------|-------------------------------|------|------|
|                                     |  |                     |   | Min                    | Typ | Max  | Min                           | Max  |      |
| t <sub>PLH</sub> , t <sub>PHL</sub> | Propagation Delay<br>(Figure 4, 5)                   | 1.65                | C <sub>L</sub> = 15 pF,<br>R <sub>L</sub> = 1 MΩ  | -                      | 5.5 | 12.0 | -                             | 12.7 | ns   |
|                                     |  | 1.80                |   | -                      | 4.6 | 10.0 | -                             | 10.5 |      |
|                                     |  | 2.50 ±0.30          |   | -                      | 3.0 | 7.0  | -                             | 7.5  |      |
|                                     |  | 3.30 ±0.30          |   | -                      | 2.4 | 4.7  | -                             | 5.0  |      |
|                                     |  | 5.00 ±0.50          |   | -                      | 1.9 | 4.1  | -                             | 4.4  |      |
|                                     |  | 3.30 ±0.30          | C <sub>L</sub> = 50 pF,<br>R <sub>L</sub> = 500 Ω | -                      | 3.0 | 5.2  | -                             | 5.5  |      |
|                                     |  | 5.00 ±0.50          |   | -                      | 2.4 | 4.5  | -                             | 4.8  |      |
| C <sub>IN</sub>                     | Input Capacitance                                    | 0.00                |   | -                      | 4   | -    | -                             | -    | pF   |
| C <sub>PD</sub>                     | Power Dissipation Capacitance<br>(Note 2) (Figure 6) | 3.30                |   | -                      | 20  | -    | -                             | -    | pF   |
|                                     |  | 5.00                |   | -                      | 26  | -    | -                             | -    |      |

2. C<sub>PD</sub> is defined as the value of the internal equivalent capacitance which is derived from dynamic operating current consumption (I<sub>CCD</sub>) at no output loading and operating at 50% duty cycle. C<sub>PD</sub> is related to I<sub>CCD</sub> dynamic operating current by the expression:  
 $I_{CCD} = (C_{PD}) (V_{CC}) (f_{IN}) + (I_{CCstatic})$ .

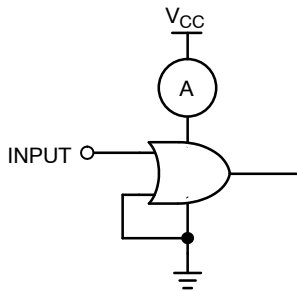


NOTE:  
 3. C<sub>L</sub> includes load and stray capacitance.  
 Input PRR = 10 MHz, t<sub>w</sub> = 500 ns

Figure 4. AC Test Circuit



Figure 5. AC Waveforms



NOTE:  
 4. Input = AC Waveform; t<sub>r</sub> = t<sub>f</sub> = 1.8 ns;  
 PRR = 10 MHz; Duty Cycle = 50%.

Figure 6. I<sub>CCD</sub> Test Circuit

# NC7SZ32

## ORDERING INFORMATION

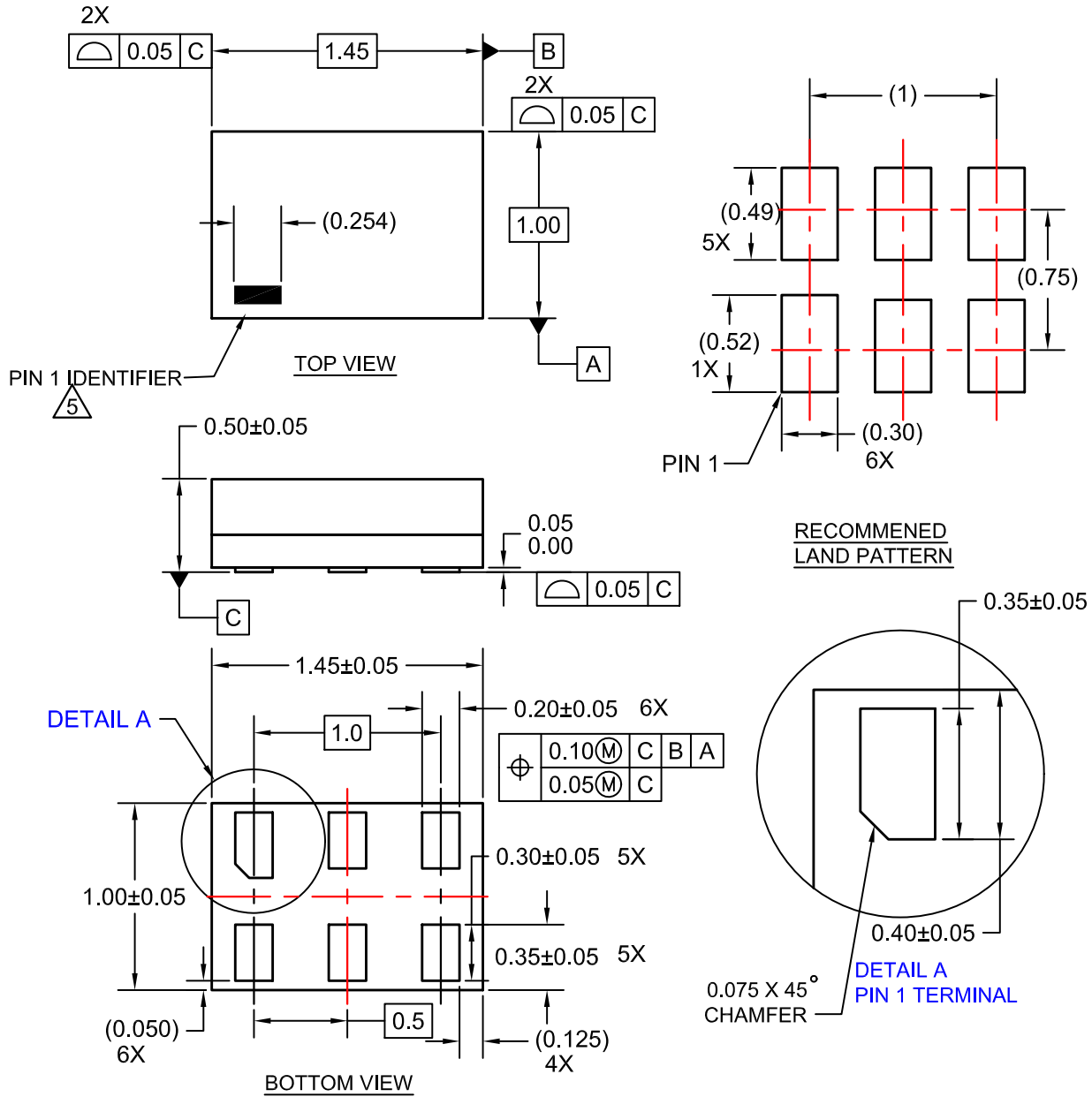
| Part Number | Top Mark | Packages         | Shipping <sup>†</sup> |
|-------------|----------|------------------|-----------------------|
| NC7SZ32M5X  | 7Z32     | SC-74A           | 3000 / Tape & Reel    |
| NC7SZ32P5X  | Z32      | SC-88A           | 3000 / Tape & Reel    |
| NC7SZ32L6X  | HH       | SIP6, MicroPak   | 5000 / Tape & Reel    |
| NC7SZ32FHX  | HH       | UDFN6, MicroPak2 | 5000 / Tape & Reel    |

<sup>†</sup>For information on tape and reel specifications, including part orientation and tape sizes, please refer to our Tape and Reel Packaging Specifications Brochure, BRD8011/D.

# NC7SZ32

## PACKAGE DIMENSIONS

SIP6 1.45X1.0  
CASE 127EB  
ISSUE O



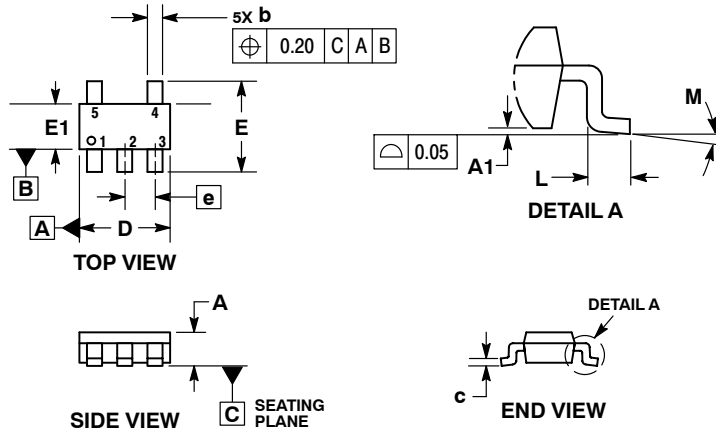
**NOTES:**

1. CONFORMS TO JEDEC STANDARD MO-252 VARIATION UAAD
2. DIMENSIONS ARE IN MILLIMETERS
3. DRAWING CONFORMS TO ASME Y14.5M-2009
4. PIN ONE IDENTIFIER IS 2X LENGTH OF ANY OTHER LINE IN THE MARK CODE LAYOUT.

# NC7SZ32

## PACKAGE DIMENSIONS

### SC-74A CASE 318BQ ISSUE B

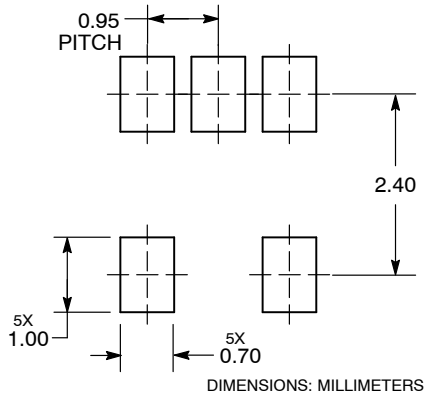


**NOTES:**

1. DIMENSIONING AND TOLERANCING PER ASME Y14.5M, 1994.
2. CONTROLLING DIMENSION: MILLIMETERS.
3. MAXIMUM LEAD THICKNESS INCLUDES LEAD FINISH THICKNESS. MINIMUM LEAD THICKNESS IS THE MINIMUM THICKNESS OF BASE MATERIAL.
4. DIMENSIONS A AND B DO NOT INCLUDE MOLD FLASH, PROTRUSIONS, OR GATE BURRS. MOLD FLASH, PROTRUSIONS, OR GATE BURRS SHALL NOT EXCEED 0.15 PER SIDE.

| DIM | MILLIMETERS |      |
|-----|-------------|------|
|     | MIN         | MAX  |
| A   | 0.90        | 1.10 |
| A1  | 0.01        | 0.10 |
| b   | 0.25        | 0.50 |
| c   | 0.10        | 0.26 |
| D   | 2.85        | 3.15 |
| E   | 2.50        | 3.00 |
| E1  | 1.35        | 1.65 |
| e   | 0.95 BSC    |      |
| L   | 0.20        | 0.60 |
| M   | 0°          | 10°  |

### RECOMMENDED SOLDERING FOOTPRINT\*

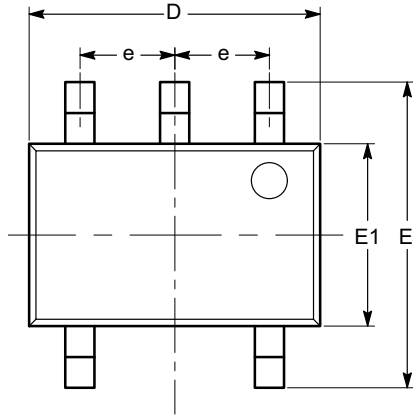


\*For additional information on our Pb-Free strategy and soldering details, please download the ON Semiconductor Soldering and Mounting Techniques Reference Manual, SOLDERRM/D.

# NC7SZ32

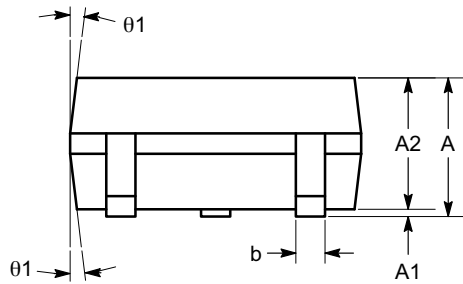
## PACKAGE DIMENSIONS

SC-88A (SC-70 5 Lead), 1.25x2  
CASE 419AC-01  
ISSUE A

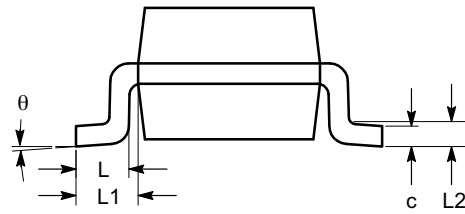


TOP VIEW

| SYMBOL     | MIN      | NOM  | MAX  |
|------------|----------|------|------|
| A          | 0.80     |      | 1.10 |
| A1         | 0.00     |      | 0.10 |
| A2         | 0.80     |      | 1.00 |
| b          | 0.15     |      | 0.30 |
| c          | 0.10     |      | 0.18 |
| D          | 1.80     | 2.00 | 2.20 |
| E          | 1.80     | 2.10 | 2.40 |
| E1         | 1.15     | 1.25 | 1.35 |
| e          | 0.65 BSC |      |      |
| L          | 0.26     | 0.36 | 0.46 |
| L1         | 0.42 REF |      |      |
| L2         | 0.15 BSC |      |      |
| $\theta$   | 0°       |      | 8°   |
| $\theta 1$ | 4°       |      | 10°  |



SIDE VIEW



END VIEW

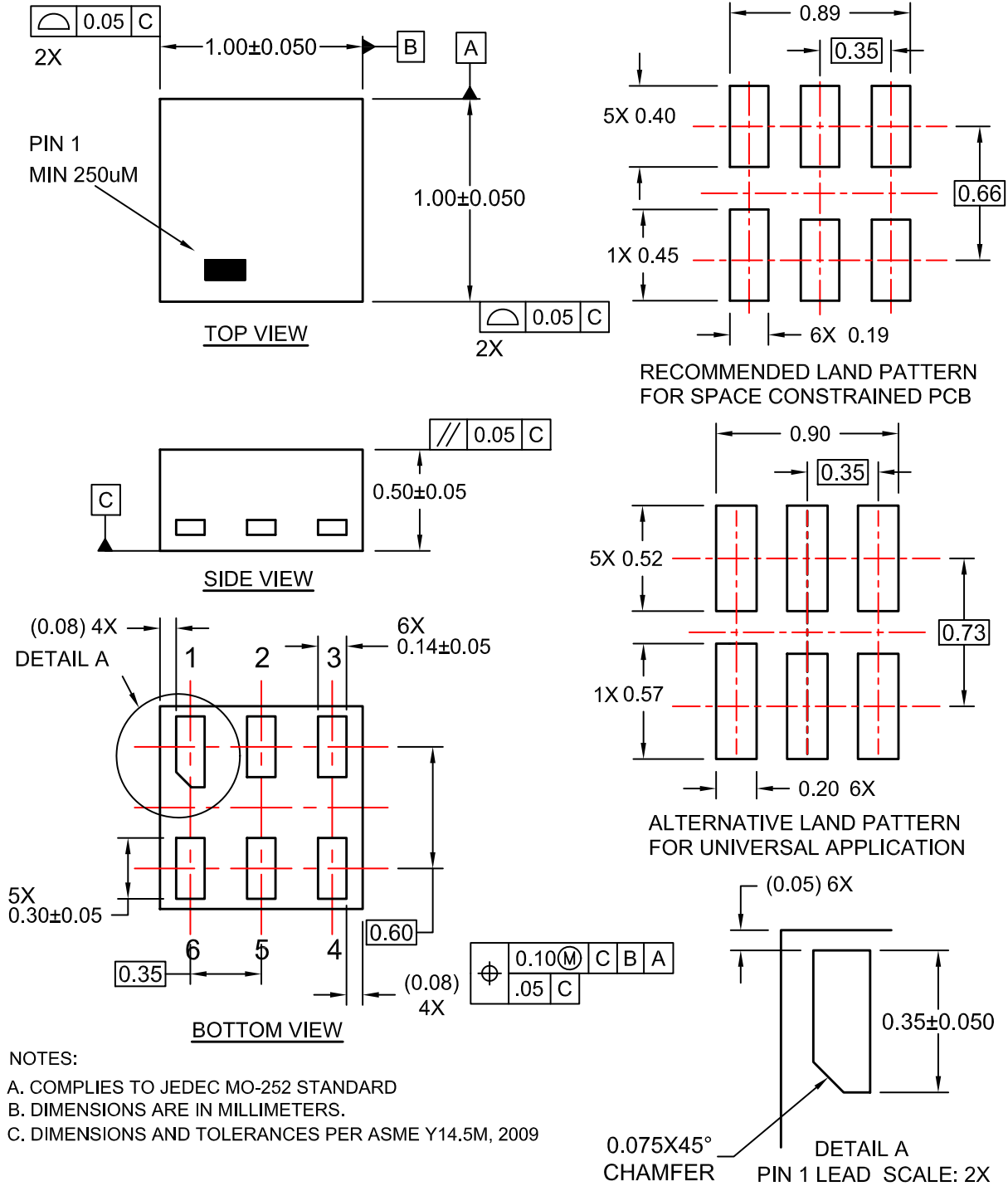
**Notes:**

- (1) All dimensions are in millimeters. Angles in degrees.
- (2) Complies with JEDEC MO-203.


# NC7SZ32

## PACKAGE DIMENSIONS

UDFN6 1.0X1.0, 0.35P  
CASE 517DP  
ISSUE O



MicroPak and MicroPak2 are trademarks of Semiconductor Components Industries, LLC (SCILLC) or its subsidiaries in the United States and/or other countries.

ON Semiconductor and  are trademarks of Semiconductor Components Industries, LLC dba ON Semiconductor or its subsidiaries in the United States and/or other countries. ON Semiconductor owns the rights to a number of patents, trademarks, copyrights, trade secrets, and other intellectual property. A listing of ON Semiconductor's product/patent coverage may be accessed at [www.onsemi.com/site/pdf/Patent-Marking.pdf](http://www.onsemi.com/site/pdf/Patent-Marking.pdf). ON Semiconductor reserves the right to make changes without further notice to any products herein. ON Semiconductor makes no warranty, representation or guarantee regarding the suitability of its products for any particular purpose, nor does ON Semiconductor assume any liability arising out of the application or use of any product or circuit, and specifically disclaims any and all liability, including without limitation special, consequential or incidental damages. Buyer is responsible for its products and applications using ON Semiconductor products, including compliance with all laws, regulations and safety requirements or standards, regardless of any support or applications information provided by ON Semiconductor. "Typical" parameters which may be provided in ON Semiconductor data sheets and/or specifications can and do vary in different applications and actual performance may vary over time. All operating parameters, including "Typicals" must be validated for each customer application by customer's technical experts. ON Semiconductor does not convey any license under its patent rights nor the rights of others. ON Semiconductor products are not designed, intended, or authorized for use as a critical component in life support systems or any FDA Class 3 medical devices or medical devices with a same or similar classification in a foreign jurisdiction or any devices intended for implantation in the human body. Should Buyer purchase or use ON Semiconductor products for any such unintended or unauthorized application, Buyer shall indemnify and hold ON Semiconductor and its officers, employees, subsidiaries, affiliates, and distributors harmless against all claims, costs, damages, and expenses, and reasonable attorney fees arising out of, directly or indirectly, any claim of personal injury or death associated with such unintended or unauthorized use, even if such claim alleges that ON Semiconductor was negligent regarding the design or manufacture of the part. ON Semiconductor is an Equal Opportunity/Affirmative Action Employer. This literature is subject to all applicable copyright laws and is not for resale in any manner.

## PUBLICATION ORDERING INFORMATION

### LITERATURE FULFILLMENT:

Literature Distribution Center for ON Semiconductor  
19521 E. 32nd Pkwy, Aurora, Colorado 80011 USA  
**Phone:** 303-675-2175 or 800-344-3860 Toll Free USA/Canada  
**Fax:** 303-675-2176 or 800-344-3867 Toll Free USA/Canada  
**Email:** [orderlit@onsemi.com](mailto:orderlit@onsemi.com)

**N. American Technical Support:** 800-282-9855 Toll Free  
USA/Canada  
**Europe, Middle East and Africa Technical Support:**  
Phone: 421 33 790 2910

**ON Semiconductor Website:** [www.onsemi.com](http://www.onsemi.com)

**Order Literature:** <http://www.onsemi.com/orderlit>

For additional information, please contact your local Sales Representative

## Looking for pricing, stock, or lifecycle information?

Click below to explore more details on WIN SOURCE:

- ⊖ [View NC7SZ32FHX on WIN SOURCE](#)
- ⊖ [Fairchild/ON Semiconductor Information](#)

## Optimize Your Supply Chain with WIN SOURCE Solutions

- ✓ Global Sourcing Solution
- ✓ Obsolete Management
- ✓ Cost Control Management
- ✓ Shortage Management
- ✓ Alternative Solution
- ✓ Excess Inventory Management