

## C-MOS 3-TERMINAL POSITIVE VOLTAGE REGULATOR

### ■ GENERAL DESCRIPTION

The **NJU7201 series** is a C-MOS 3-terminal positive voltage regulator which contains internal accurate voltage reference, error amplifier, control transistor and output voltage setting resistor.

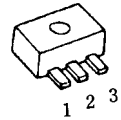
The regulation voltage is fixed by internal circuits and the following line-up of different output voltage versions are available.

The **NJU7201 series** is suitable for battery operated items and battery back-up systems because of low operating current and low dropout voltage.

### ■ PACKAGE OUTLINE



NJU7201L(TO-92)



NJU7201U(SOT-89)

### ■ FEATURES

- Low Operating Current (19 $\mu$ A typ.)
- Wide Operating Voltage Range
- Low Dropout Voltage
  - ( $\Delta V_{IO} < 0.3V$  1.2 to 1.5V output,  $I_{OUT} = 0.5mA$ )
  - ( $\Delta V_{IO} < 0.6V$  2.5 to 3.5V output,  $I_{OUT} = 20mA$ )
  - ( $\Delta V_{IO} < 0.6V$  4.0 to 5.5V output,  $I_{OUT} = 40mA$ )
- Small Temperature Coefficient of Output Voltage
- Package Outline (TO-92/SOT-89)
- C-MOS Technology

### ■ TERMINAL DESCRIPTION

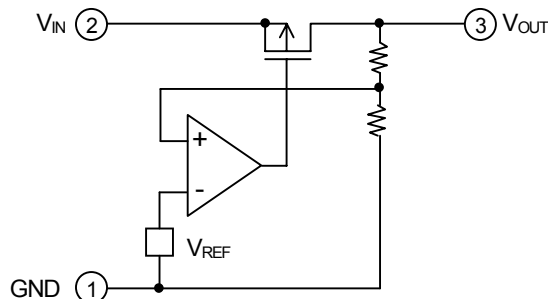
| No. | Description |
|-----|-------------|
| 1   | GND         |
| 2   | Input       |
| 3   | Output      |

### ■ OUTPUT VOLTAGE LINE-UP

| Output Voltage | TO-92 Type | SOT-89 Type | Output Voltage | TO-92 Type | SOT-89 Type |
|----------------|------------|-------------|----------------|------------|-------------|
| +1.2V          | NJU7201L12 | NJU7201U12  | +3.5V          | NJU7201L35 | NJU7201U35  |
| +1.5V          | NJU7201L15 | NJU7201U15  | +4.0V          | NJU7201L40 | NJU7201U40  |
| +2.5V          | NJU7201L25 | NJU7201U25  | +4.5V          | NJU7201L45 | NJU7201U45  |
| +2.7V          | NJU7201L27 | NJU7201U27  | +5.0V          | NJU7201L50 | NJU7201U50  |
| +3.0V          | NJU7201L30 | NJU7201U30  | +5.2V          | NJU7201L52 | NJU7201U52  |
| +3.2V          | NJU7201L32 | NJU7201U32  | +5.5V          | NJU7201L55 | NJU7201U55  |

Note1) The SOT-89 type name is different from the marking, so it refer to attached paper correspondence table.

### ■ EQUIVALENT CIRCUIT



# NJU7201 Series

## ■ ABSOLUTE MAXIMUM RATINGS

( $T_a = 25^\circ\text{C}$ )

| PARAMETER             | SYMBOL    | RATINGS                     | UNIT             |
|-----------------------|-----------|-----------------------------|------------------|
| Input Voltage         | $V_{IN}$  | 14                          | V                |
| Output Voltage        | $V_{OUT}$ | $V_{IN}+0.3$ to GND-0.3     | V                |
| Output Current        | $I_{OUT}$ | 100                         | mA               |
| Power Dissipation     | $P_D$     | 500 (TO-92)<br>300 (SOT-89) | mW               |
| Operating Temperature | $T_{opr}$ | -25 to +75                  | $^\circ\text{C}$ |
| Storage Temperature   | $T_{stg}$ | -40 to +125                 | $^\circ\text{C}$ |

## ■ ELECTRICAL CHARACTERISTICS

+1.2V Version

( $C_{IN} = C_o = 0.1\mu\text{F}$ ,  $T_a = 25^\circ\text{C}$ )

| PARAMETER         | SYMBOL   | CONDITION   | MIN. | TYP.  | MAX. | UNIT          |
|-------------------|--|---|------|-------|------|---------------|
| Output Voltage    | $V_{OUT}$  | $V_{IN} = 3.0\text{V}$ , $I_{OUT} = 5\text{mA}$         | 1.14 | 1.20  | 1.26 | V             |
| Dropout Voltage   | $\Delta V_{IO}$                                  | $I_{OUT} = 0.5\text{mA}$                                | -    | 0.020 | 0.30 | V             |
| Input Voltage     | $V_{IN}$   |   | -    | -     | 12   | V             |
| Operating Current | $I_Q$  | $V_{IN} = 3.0\text{V}$                                  | -    | 19    | 30   | $\mu\text{A}$ |
| Load Regulation   | $\Delta V_{OUT} / \Delta I_{OUT}$                | $V_{IN} = 3.0\text{V}$ , $I_{OUT} = 1 \sim 15\text{mA}$ | -    | 10    | 180  | mV            |
| Line Regulation   | $\Delta V_{OUT} / (\Delta V_{IN} \cdot V_{OUT})$ | $V_{IN} = 1.5 \sim 12\text{V}$                          | -    | 0.10  | -    | %/V           |

+1.5V Version

( $C_{IN} = C_o = 0.1\mu\text{F}$ ,  $T_a = 25^\circ\text{C}$ )

| PARAMETER         | SYMBOL   | CONDITION   | MIN.  | TYP.  | MAX.  | UNIT          |
|-------------------|--|---|-------|-------|-------|---------------|
| Output Voltage    | $V_{OUT}$  | $V_{IN} = 3.0\text{V}$ , $I_{OUT} = 5\text{mA}$         | 1.425 | 1.500 | 1.575 | V             |
| Dropout Voltage   | $\Delta V_{IO}$                                  | $I_{OUT} = 0.5\text{mA}$                                | -     | 0.020 | 0.30  | V             |
| Input Voltage     | $V_{IN}$   |   | -     | -     | 12    | V             |
| Operating Current | $I_Q$  | $V_{IN} = 3.0\text{V}$                                  | -     | 19    | 30    | $\mu\text{A}$ |
| Load Regulation   | $\Delta V_{OUT} / \Delta I_{OUT}$                | $V_{IN} = 3.0\text{V}$ , $I_{OUT} = 1 \sim 15\text{mA}$ | -     | -     | 180   | mV            |
| Line Regulation   | $\Delta V_{OUT} / (\Delta V_{IN} \cdot V_{OUT})$ | $V_{IN} = 1.8 \sim 12\text{V}$                          | -     | 0.10  | -     | %/V           |

+2.5V Version

( $C_{IN} = C_o = 0.1\mu\text{F}$ ,  $T_a = 25^\circ\text{C}$ )

| PARAMETER         | SYMBOL   | CONDITION   | MIN.  | TYP.  | MAX.  | UNIT          |
|-------------------|--|---|-------|-------|-------|---------------|
| Output Voltage    | $V_{OUT}$  | $V_{IN} = 4.5\text{V}$ , $I_{OUT} = 10\text{mA}$        | 2.375 | 2.500 | 2.625 | V             |
| Dropout Voltage   | $\Delta V_{IO}$                                  | $I_{OUT} = 20\text{mA}$                                 | -     | 0.20  | 0.60  | V             |
| Input Voltage     | $V_{IN}$   |   | -     | -     | 12    | V             |
| Operating Current | $I_Q$  | $V_{IN} = 4.5\text{V}$                                  | -     | 19    | 30    | $\mu\text{A}$ |
| Load Regulation   | $\Delta V_{OUT} / \Delta I_{OUT}$                | $V_{IN} = 4.5\text{V}$ , $I_{OUT} = 1 \sim 20\text{mA}$ | -     | -     | 180   | mV            |
| Line Regulation   | $\Delta V_{OUT} / (\Delta V_{IN} \cdot V_{OUT})$ | $V_{IN} = 3.5 \sim 12\text{V}$                          | -     | 0.10  | -     | %/V           |

+2.7V Version

( $C_{IN} = C_o = 0.1\mu\text{F}$ ,  $T_a = 25^\circ\text{C}$ )

| PARAMETER         | SYMBOL   | CONDITION   | MIN.  | TYP.  | MAX.  | UNIT          |
|-------------------|--|---|-------|-------|-------|---------------|
| Output Voltage    | $V_{OUT}$  | $V_{IN} = 4.7\text{V}$ , $I_{OUT} = 10\text{mA}$        | 2.565 | 2.700 | 2.835 | V             |
| Dropout Voltage   | $\Delta V_{IO}$                                  | $I_{OUT} = 20\text{mA}$                                 | -     | 0.20  | 0.60  | V             |
| Input Voltage     | $V_{IN}$   |   | -     | -     | 12    | V             |
| Operating Current | $I_Q$  | $V_{IN} = 4.7\text{V}$                                  | -     | 19    | 30    | $\mu\text{A}$ |
| Load Regulation   | $\Delta V_{OUT} / \Delta I_{OUT}$                | $V_{IN} = 4.7\text{V}$ , $I_{OUT} = 1 \sim 20\text{mA}$ | -     | -     | 180   | mV            |
| Line Regulation   | $\Delta V_{OUT} / (\Delta V_{IN} \cdot V_{OUT})$ | $V_{IN} = 3.7 \sim 12\text{V}$                          | -     | 0.10  | -     | %/V           |

# NJU7201 Series

## +3.0V Version

( $C_{IN} = C_o = 0.1\mu F$ ,  $T_a = 25^\circ C$ )

| PARAMETER         | SYMBOL   | CONDITION                                 | MIN. | TYP. | MAX. | UNIT    |
|-------------------|--|---|------|------|------|---------|
| Output Voltage    | $V_{OUT}$  | $V_{IN} = 5.0V$ , $I_{OUT} = 10mA$        | 2.85 | 3.00 | 3.15 | V       |
| Dropout Voltage   | $\Delta V_{IO}$                                  | $I_{OUT} = 20mA$                          | -    | 0.20 | 0.60 | V       |
| Input Voltage     | $V_{IN}$   |   | -    | -    | 12   | V       |
| Operating Current | $I_Q$  | $V_{IN} = 5.0V$                           | -    | 19   | 30   | $\mu A$ |
| Load Regulation   | $\Delta V_{OUT} / \Delta I_{OUT}$                | $V_{IN} = 5.0V$ , $I_{OUT} = 1 \sim 20mA$ | -    | 15   | 180  | mV      |
| Line Regulation   | $\Delta V_{OUT} / (\Delta V_{IN} \cdot V_{OUT})$ | $V_{IN} = 4.0 \sim 12.0V$                 | -    | 0.10 | -    | %/V     |

## +3.2V Version

( $C_{IN} = C_o = 0.1\mu F$ ,  $T_a = 25^\circ C$ )

| PARAMETER         | SYMBOL   | CONDITION                                 | MIN. | TYP. | MAX. | UNIT    |
|-------------------|--|---|------|------|------|---------|
| Output Voltage    | $V_{OUT}$  | $V_{IN} = 5.2V$ , $I_{OUT} = 10mA$        | 3.04 | 3.20 | 3.36 | V       |
| Dropout Voltage   | $\Delta V_{IO}$                                  | $I_{OUT} = 20mA$                          | -    | 0.20 | 0.60 | V       |
| Input Voltage     | $V_{IN}$   |   | -    | -    | 12   | V       |
| Operating Current | $I_Q$  | $V_{IN} = 5.0V$                           | -    | 19   | 30   | $\mu A$ |
| Load Regulation   | $\Delta V_{OUT} / \Delta I_{OUT}$                | $V_{IN} = 5.0V$ , $I_{OUT} = 1 \sim 20mA$ | -    | -    | 180  | mV      |
| Line Regulation   | $\Delta V_{OUT} / (\Delta V_{IN} \cdot V_{OUT})$ | $V_{IN} = 4.0 \sim 12.0V$                 | -    | 0.10 | -    | %/V     |

## +3.5V Version

( $C_{IN} = C_o = 0.1\mu F$ ,  $T_a = 25^\circ C$ )

| PARAMETER         | SYMBOL   | CONDITION                                 | MIN.  | TYP.  | MAX.  | UNIT    |
|-------------------|--|---|-------|-------|-------|---------|
| Output Voltage    | $V_{OUT}$  | $V_{IN} = 5.5V$ , $I_{OUT} = 10mA$        | 3.325 | 3.500 | 3.675 | V       |
| Dropout Voltage   | $\Delta V_{IO}$                                  | $I_{OUT} = 20mA$                          | -     | 0.20  | 0.60  | V       |
| Input Voltage     | $V_{IN}$   |   | -     | -     | 12    | V       |
| Operating Current | $I_Q$  | $V_{IN} = 5.5V$                           | -     | 19    | 30    | $\mu A$ |
| Load Regulation   | $\Delta V_{OUT} / \Delta I_{OUT}$                | $V_{IN} = 5.5V$ , $I_{OUT} = 1 \sim 20mA$ | -     | -     | 180   | mV      |
| Line Regulation   | $\Delta V_{OUT} / (\Delta V_{IN} \cdot V_{OUT})$ | $V_{IN} = 4.5 \sim 12.0V$                 | -     | 0.10  | -     | %/V     |

## +4.0V Version

( $C_{IN} = C_o = 0.1\mu F$ ,  $T_a = 25^\circ C$ )

| PARAMETER         | SYMBOL   | CONDITION                                 | MIN. | TYP. | MAX. | UNIT    |
|-------------------|--|---|------|------|------|---------|
| Output Voltage    | $V_{OUT}$  | $V_{IN} = 6.0V$ , $I_{OUT} = 30mA$        | 3.8  | 4.0  | 4.2  | V       |
| Dropout Voltage   | $\Delta V_{IO}$                                  | $I_{OUT} = 40mA$                          | -    | 0.30 | 0.60 | V       |
| Input Voltage     | $V_{IN}$   |   | -    | -    | 12   | V       |
| Operating Current | $I_Q$  | $V_{IN} = 6.0V$                           | -    | 19   | 30   | $\mu A$ |
| Load Regulation   | $\Delta V_{OUT} / \Delta I_{OUT}$                | $V_{IN} = 6.0V$ , $I_{OUT} = 1 \sim 40mA$ | -    | -    | 120  | mV      |
| Line Regulation   | $\Delta V_{OUT} / (\Delta V_{IN} \cdot V_{OUT})$ | $V_{IN} = 5.0 \sim 12.0V$                 | -    | 0.10 | -    | %/V     |

# NJU7201 Series

+4.5V Version

( $C_{IN} = C_o = 0.1\mu F, T_a = 25^\circ C$ )

| PARAMETER         | SYMBOL   | CONDITION                             | MIN.  | TYP. | MAX.  | UNIT    |
|-------------------|--|---------------------------------------|-------|------|-------|---------|
| Output Voltage    | $V_{OUT}$  | $V_{IN} = 6.5V, I_{OUT} = 30mA$       | 4.275 | 4.5  | 4.725 | V       |
| Dropout Voltage   | $\Delta V_{IO}$                                  | $I_{OUT} = 40mA$                      | -     | 0.30 | 0.60  | V       |
| Input Voltage     | $V_{IN}$   |                                       | -     | -    | 12    | V       |
| Operating Current | $I_Q$  | $V_{IN} = 6.5V$                       | -     | 19   | 30    | $\mu A$ |
| Load Regulation   | $\Delta V_{OUT} / \Delta I_{OUT}$                | $V_{IN} = 6.5V, I_{OUT} = 1\sim 40mA$ | -     | -    | 120   | mV      |
| Line Regulation   | $\Delta V_{OUT} / (\Delta V_{IN} \cdot V_{OUT})$ | $V_{IN} = 5.5\sim 12.0V$              | -     | 0.10 | -     | %/V     |

+5.0V Version

( $C_{IN} = C_o = 0.1\mu F, T_a = 25^\circ C$ )

| PARAMETER         | SYMBOL   | CONDITION                             | MIN. | TYP. | MAX. | UNIT    |
|-------------------|--|---------------------------------------|------|------|------|---------|
| Output Voltage    | $V_{OUT}$  | $V_{IN} = 7.0V, I_{OUT} = 30mA$       | 4.75 | 5.00 | 5.25 | V       |
| Dropout Voltage   | $\Delta V_{IO}$                                  | $I_{OUT} = 40mA$                      | -    | 0.30 | 0.60 | V       |
| Input Voltage     | $V_{IN}$   |                                       | -    | -    | 12   | V       |
| Operating Current | $I_Q$  | $V_{IN} = 7.0V$                       | -    | 19   | 30   | $\mu A$ |
| Load Regulation   | $\Delta V_{OUT} / \Delta I_{OUT}$                | $V_{IN} = 7.0V, I_{OUT} = 1\sim 40mA$ | -    | 35   | 120  | mV      |
| Line Regulation   | $\Delta V_{OUT} / (\Delta V_{IN} \cdot V_{OUT})$ | $V_{IN} = 6.0\sim 12.0V$              | -    | 0.10 | -    | %/V     |

+5.2V Version

( $C_{IN} = C_o = 0.1\mu F, T_a = 25^\circ C$ )

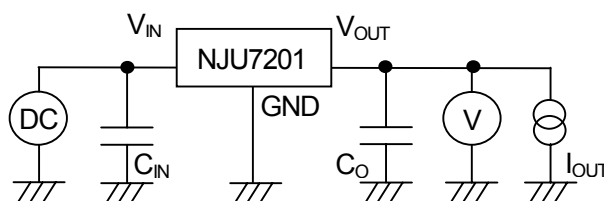
| PARAMETER         | SYMBOL   | CONDITION                             | MIN. | TYP. | MAX. | UNIT    |
|-------------------|--|---------------------------------------|------|------|------|---------|
| Output Voltage    | $V_{OUT}$  | $V_{IN} = 7.2V, I_{OUT} = 30mA$       | 4.94 | 5.20 | 5.46 | V       |
| Dropout Voltage   | $\Delta V_{IO}$                                  | $I_{OUT} = 40mA$                      | -    | 0.30 | 0.60 | V       |
| Input Voltage     | $V_{IN}$   |                                       | -    | -    | 12   | V       |
| Operating Current | $I_Q$  | $V_{IN} = 7.2V$                       | -    | 19   | 30   | $\mu A$ |
| Load Regulation   | $\Delta V_{OUT} / \Delta I_{OUT}$                | $V_{IN} = 7.2V, I_{OUT} = 1\sim 40mA$ | -    | -    | 120  | mV      |
| Line Regulation   | $\Delta V_{OUT} / (\Delta V_{IN} \cdot V_{OUT})$ | $V_{IN} = 6.2\sim 12.0V$              | -    | 0.10 | -    | %/V     |

+5.5V Version

( $C_{IN} = C_o = 0.1\mu F, T_a = 25^\circ C$ )

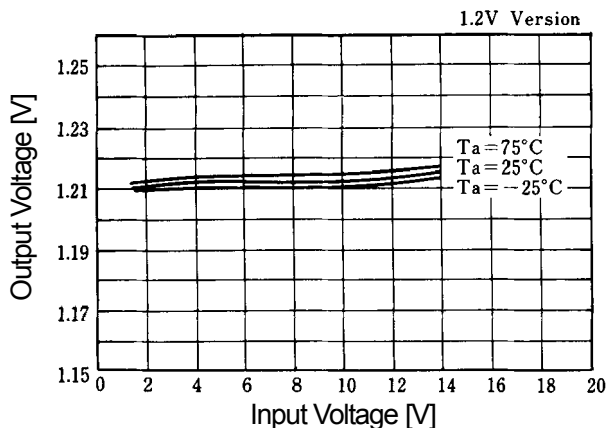
| PARAMETER         | SYMBOL   | CONDITION                             | MIN.  | TYP.  | MAX.  | UNIT    |
|-------------------|--|---------------------------------------|-------|-------|-------|---------|
| Output Voltage    | $V_{OUT}$  | $V_{IN} = 7.5V, I_{OUT} = 30mA$       | 5.225 | 5.500 | 5.775 | V       |
| Dropout Voltage   | $\Delta V_{IO}$                                  | $I_{OUT} = 40mA$                      | -     | 0.30  | 0.60  | V       |
| Input Voltage     | $V_{IN}$   |                                       | -     | -     | 12    | V       |
| Operating Current | $I_Q$  | $V_{IN} = 7.5V$                       | -     | 19    | 30    | $\mu A$ |
| Load Regulation   | $\Delta V_{OUT} / \Delta I_{OUT}$                | $V_{IN} = 7.5V, I_{OUT} = 1\sim 40mA$ | -     | -     | 120   | mV      |
| Line Regulation   | $\Delta V_{OUT} / (\Delta V_{IN} \cdot V_{OUT})$ | $V_{IN} = 6.5\sim 12.0V$              | -     | 0.10  | -     | %/V     |

## MEASUREMENT CIRCUIT

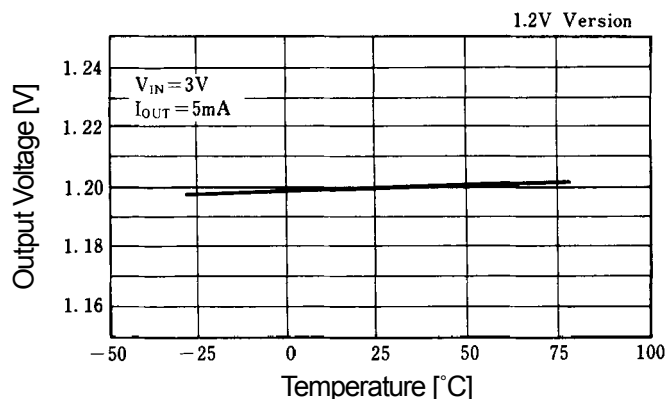


## ■ TYPICAL CHARACTERISTICS

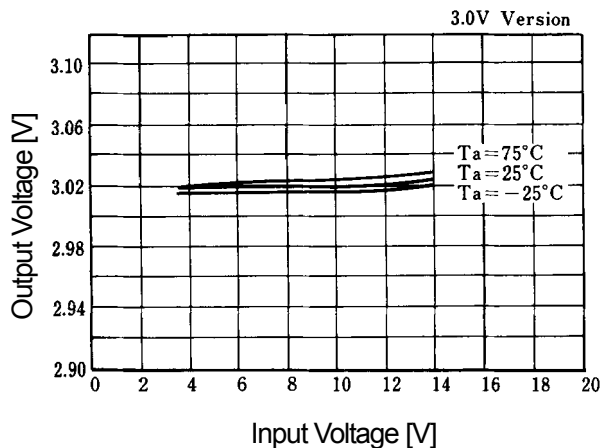
### Output Voltage vs. Input Voltage



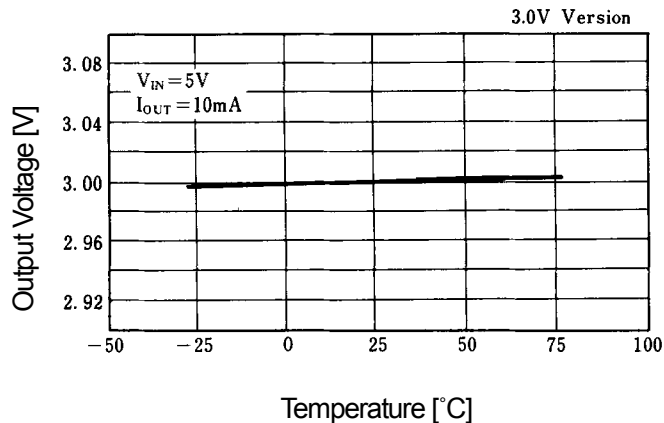
### Output Voltage vs. Input Temperature



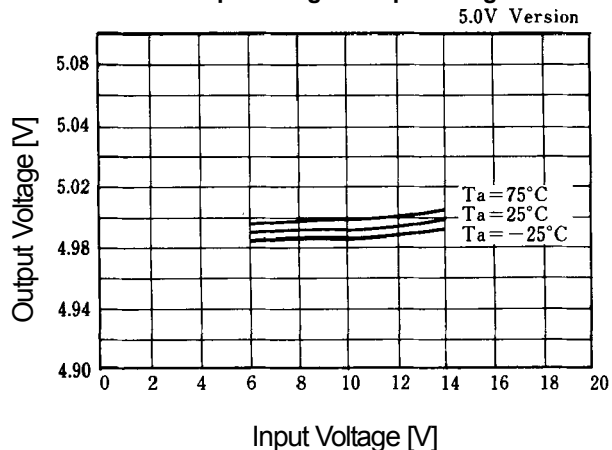
### Output Voltage vs. Input Voltage



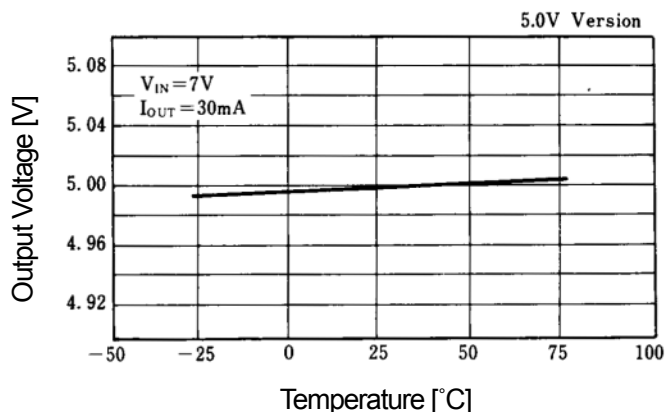
### Output Voltage vs. Input Temperature



### Output Voltage vs. Input Voltage

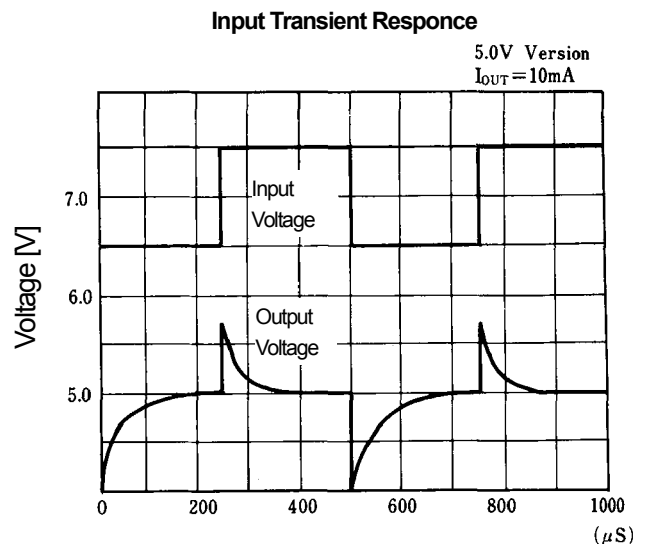
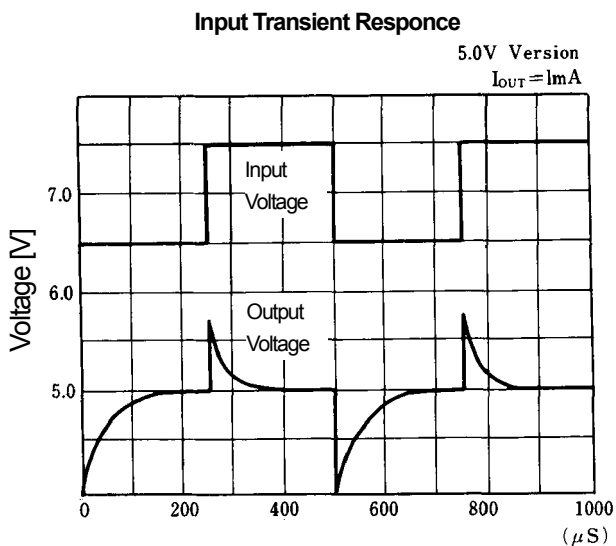
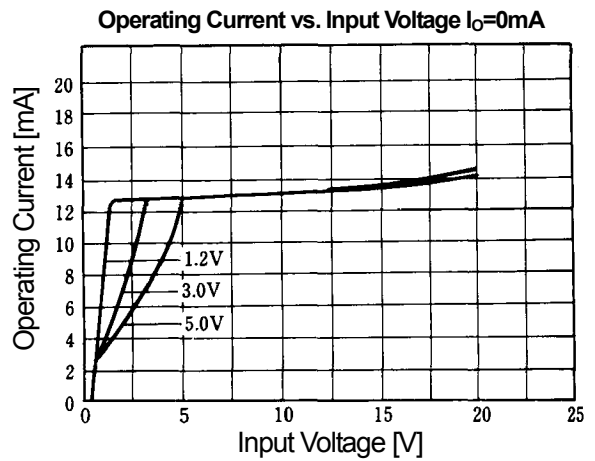
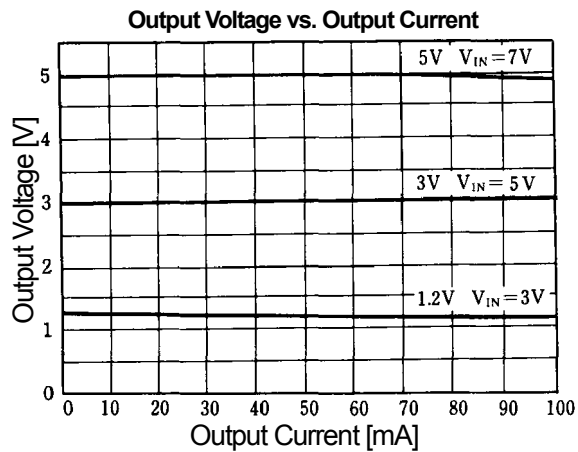
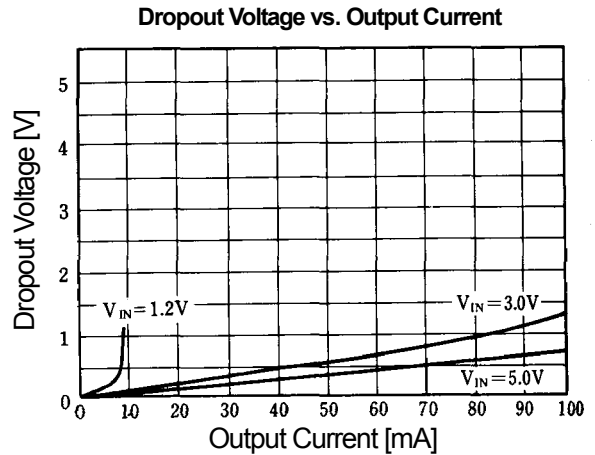
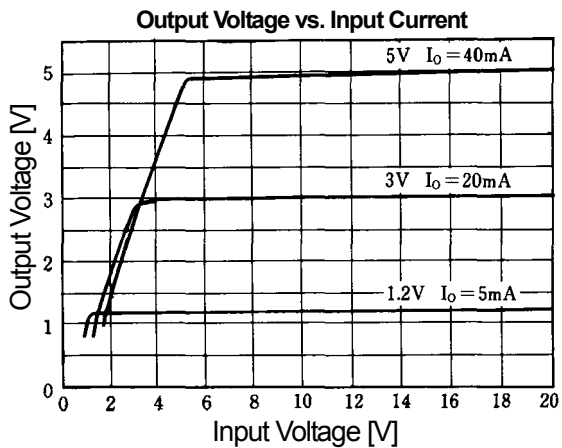


### Output Voltage vs. Input Temperature



# NJU7201 Series



## ■ TYPICAL CHARACTERISTICS



**[CAUTION]**  
The specifications on this databook are only given for information, without any guarantee as regards either mistakes or omissions. The application circuits in this databook are described only to show representative usages of the product and not intended for the guarantee or permission of any right including the industrial rights.

## Looking for pricing, stock, or lifecycle information?

Click below to explore more details on WIN SOURCE:

-  [View NJU7201U40 on WIN SOURCE](#)
-  [NJR Corporation/NJRC Information](#)

## Optimize Your Supply Chain with WIN SOURCE Solutions

-  Global Sourcing Solution
-  Obsolete Management
-  Cost Control Management
-  Shortage Management
-  Alternative Solution
-  Excess Inventory Management