



**THE DATASHEET OF  
NTLJD2105LTBG**



# NTLJD2105L

## Power MOSFET

### 8 V, 4.3 A, High Side Load Switch with Level Shift, 2x2 mm WDFN Package

#### Features

- WDFN 2x2 mm Package with Exposed Drain Pads Offers Excellent Thermal Performance
- Low  $R_{DS(on)}$  P-Channel Load Switch with N-channel MOSFET for Level Shift
- N Channel Operated at 1.5 V Gate Drive Voltage Level
- P Channel Operated at 1.5 V Supply Voltage
- Same Footprint as SC88
- Low Profile (<0.8 mm) Allows it to Fit Easily into Extremely Thin Environments
- ESD Protection
- These are Pb-Free Devices

#### Applications

- High Side Load Switch with Level Shift
- Optimized for Power Management in Ultra Portable Equipment

#### MOSFET(Q2) MAXIMUM RATINGS

( $T_J = 25^\circ\text{C}$  unless otherwise stated)

Parameter		Symbol	Value	Unit	
Q2 Input Voltage ( $V_{DS}$ , P-Channel)		$V_{IN}$	8	V	
Q1 On/Off Voltage ( $V_{GS}$ , N-Channel)		$V_{ON/OFF}$	6	V	
Continuous Load Current (Note 1)	Steady State	$T_A = 25^\circ\text{C}$	$I_L$	4.3	A
		$T_A = 85^\circ\text{C}$		3.1	
Power Dissipation (Note 1)	Steady State	$T_A = 25^\circ\text{C}$	$P_D$	1.56	W
Continuous Load Current (Note 2)	Steady State	$T_A = 25^\circ\text{C}$	$I_L$	2.5	A
		$T_A = 85^\circ\text{C}$		1.8	
Power Dissipation (Note 2)	Steady State	$T_A = 25^\circ\text{C}$	$P_D$	0.52	W
Pulsed Load Current	$t_p = 10 \mu\text{s}$	$I_{LM}$	20	A	
Operating Junction and Storage Temperature		$T_J, T_{STG}$	-55 to 150	$^\circ\text{C}$	
Source Current (Body Diode) (Note 2)		$I_S$	-2.7	A	
Lead Temperature for Soldering Purposes (1/8" from case for 10 s)		$T_L$	260	$^\circ\text{C}$	

Stresses exceeding those listed in the Maximum Ratings table may damage the device. If any of these limits are exceeded, device functionality should not be assumed, damage may occur and reliability may be affected.

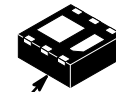
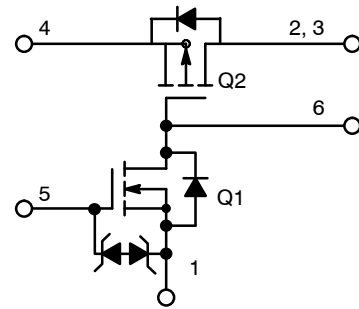
1. Surface-mounted on FR4 board using 1 in sq pad size (Cu area = 1.127 in sq [2 oz] including traces)
2. Surface-mounted on FR4 board using the minimum recommended pad size.



ON Semiconductor®

[www.onsemi.com](http://www.onsemi.com)

$V_{INMAX}$	$R_{DS(on)} MAX$	$I_L MAX$
20 V	50 m $\Omega$ @ 4.5 V	4.3 A
	60 m $\Omega$ @ 2.5 V	
	80 m $\Omega$ @ 1.8 V	
	115 m $\Omega$ @ 1.5 V	



Pin 1

WDFN6  
CASE 506AZ

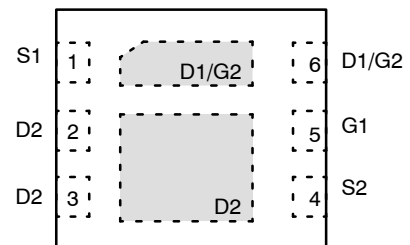
#### MARKING DIAGRAM



JN = Specific Device Code  
M = Date Code  
▪ = Pb-Free Package

(Note: Microdot may be in either location)

#### PIN CONNECTIONS



(Top View)

#### ORDERING INFORMATION

See detailed ordering and shipping information on page 5 of this data sheet.

# NTLJD2105L

## THERMAL RESISTANCE RATINGS

Parameter	Symbol	Max	Unit
Junction-to-Ambient – Steady State (Note 3)	$R_{\theta JA}$	80	$^{\circ}\text{C}/\text{W}$
Junction-to-Ambient – $t \leq 5$ s (Note 3)	$R_{\theta JA}$	38	$^{\circ}\text{C}/\text{W}$
Junction-to-Ambient – Steady State Min Pad (Note 4)	$R_{\theta JA}$	180	$^{\circ}\text{C}/\text{W}$

3. Surface Mounted on FR4 Board using 1 in sq pad size (Cu area = 1.127 in sq [2 oz] including traces).  
 4. Surface-mounted on FR4 board using the minimum recommended pad size.

## ELECTRICAL CHARACTERISTICS ( $T_J = 25^{\circ}\text{C}$ unless otherwise specified)

Parameter	Symbol	Test Condition	Min	Typ	Max	Unit
-----------	--------	----------------	-----	-----	-----	------

### OFF CHARACTERISTICS

Q2 Drain-to-Source Breakdown Voltage	$V_{(BR)DSS}$	$V_{GS} = 0$ V, $I_D = 250$ $\mu\text{A}$	-8.0			V
Q2 Forward Leakage Current	$I_{FL}$	$V_{ON/OFF} = 0$ V, $V_{IN} = 8.0$ V	$T_J = 25^{\circ}\text{C}$		0.1	$\mu\text{A}$
			$T_J = 85^{\circ}\text{C}$		1	
Q1 Gate-to-Source Leakage Current	$I_{GSS}$	$V_{DS} = 0$ V, $V_{GS1} = \pm 6$ V			$\pm 100$	nA
Q1 Diode Forward On-Voltage	$V_{SD}$	$I_S = -1.0$ A, $V_{GS1} = 0$ V		-0.8	-1.1	V

### ON CHARACTERISTICS

Q1 ON/OFF Voltage	$V_{ON/OFF}$		1.5		8.0	
Q1 Gate Threshold Voltage	$V_{GS1(TH)}$	$V_{GS1} = V_{DS1}$ , $I_D = 250$ $\mu\text{A}$	0.40		1.0	V
Q2 Input Voltage	$V_{IN}$		1.8		8.0	V
Q2 Drain-to-Source On Resistance	$R_{DS(on)}$	$V_{IN} = 4.5$ V, $I_L = 4.0$ A		33	50	m $\Omega$
		$V_{IN} = 2.5$ V, $I_L = 3.0$ A		40	60	
		$V_{IN} = 1.8$ V, $I_L = 1.7$ A		60	80	
		$V_{IN} = 1.5$ V, $I_L = 1.2$ A		75	115	
Q2 Load Current	$I_L$	$V_{DROP} \leq 0.2$ V, $V_{IN} = 2.5$ V, $V_{ON/OFF} = 1.5$ V	1.0			A
		$V_{DROP} \leq 0.3$ V, $V_{IN} = 1.8$ V, $V_{ON/OFF} = 1.5$ V	1.0			

# NTLJD2105L

## TYPICAL PERFORMANCE CURVES ( $T_J = 25^\circ\text{C}$ unless otherwise noted)

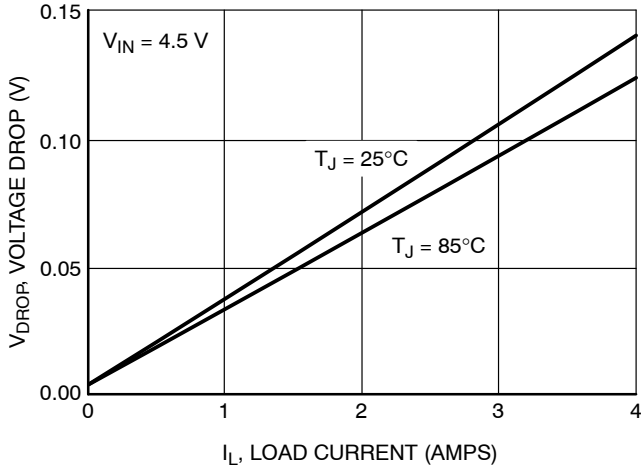


Figure 1. Voltage Drop versus Load Current @  $V_{IN} = 4.5\text{ V}$

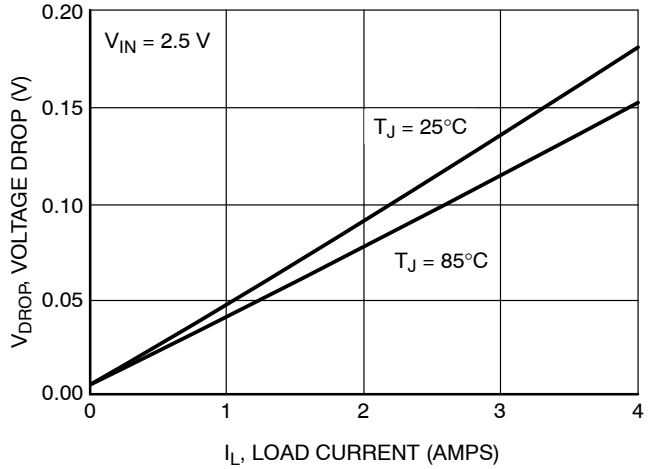


Figure 2. Voltage Drop versus Load Current @  $V_{IN} = 2.5\text{ V}$

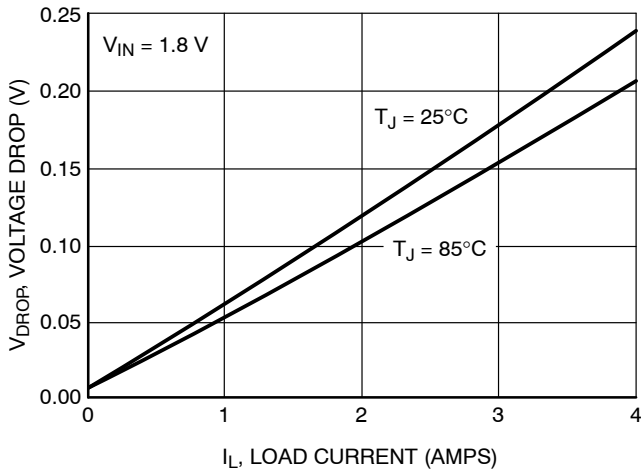


Figure 3. Voltage Drop versus Load Current @  $V_{IN} = 1.8\text{ V}$

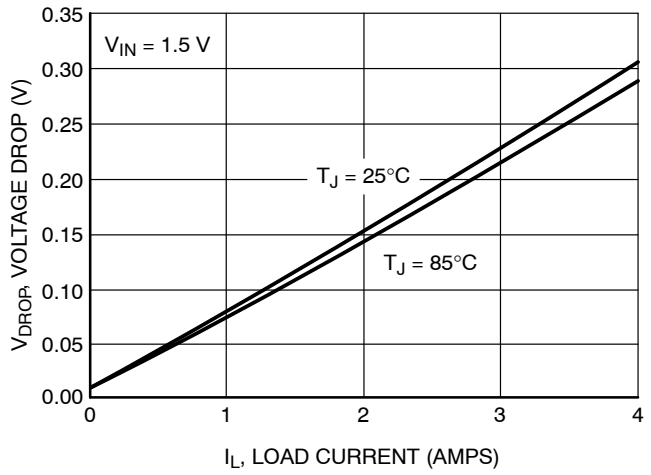
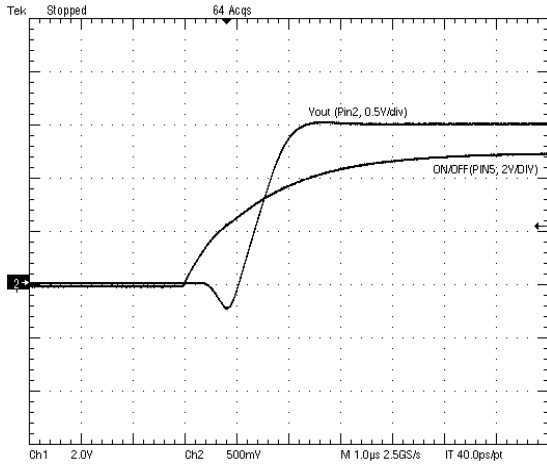


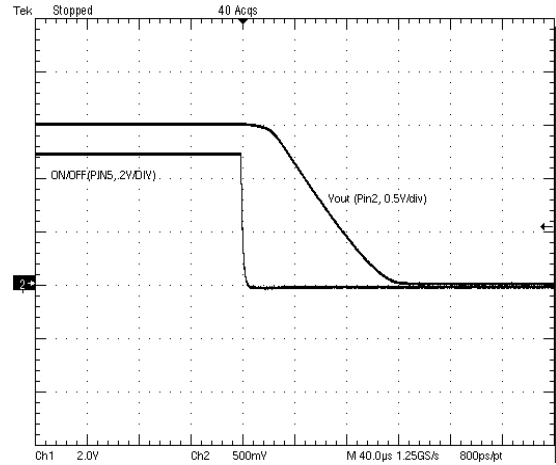
Figure 4. Voltage Drop versus Load Current @  $V_{IN} = 1.5\text{ V}$

# NTLJD2105L

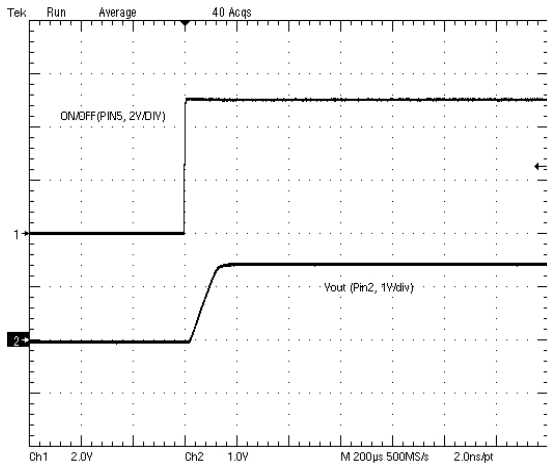
## TYPICAL PERFORMANCE CURVES ( $T_J = 25^\circ\text{C}$ unless otherwise noted)



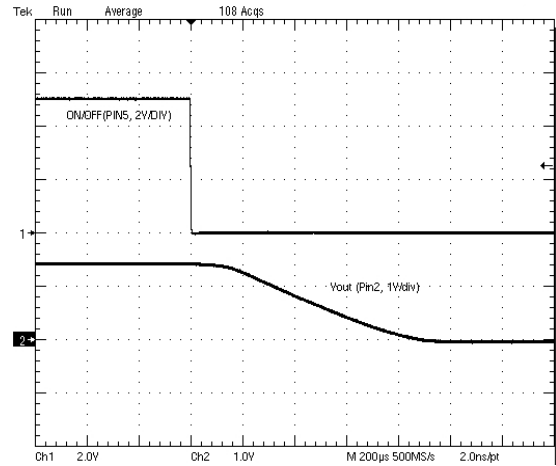
**Figure 5. Turn-on**  
 $(V_{in} = 1.5\text{ V}, R_L = 3\ \Omega, R_1 = 1\ \text{k}\Omega, R_2 = 0, C_1 = 47\ \text{nF})$



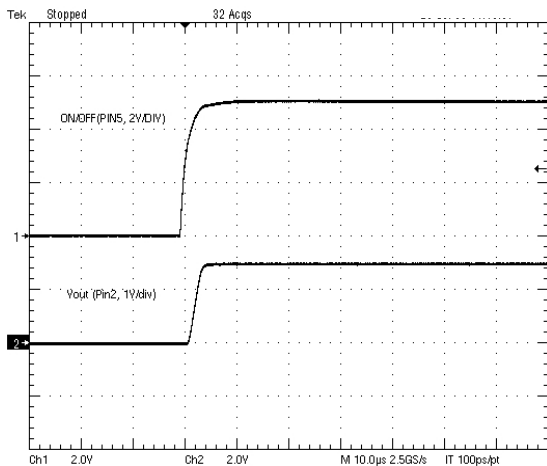
**Figure 6. Turn-off**  
 $(V_{in} = 1.5\text{ V}, R_L = 3\ \Omega, R_1 = 1\ \text{k}\Omega, R_2 = 0, C_1 = 47\ \text{nF})$



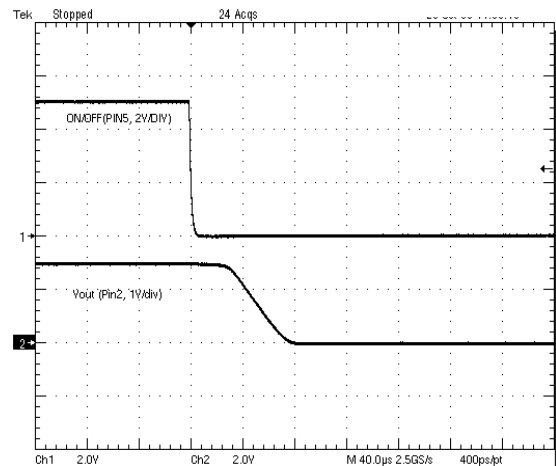
**Figure 7. Turn-on**  
 $(V_{in} = 1.5\text{ V}, R_L = 3\ \Omega, R_1 = 10\ \text{k}\Omega, R_2 = 1\ \text{k}\Omega, C_1 = 47\ \text{nF})$



**Figure 8. Turn-off**  
 $(V_{in} = 1.5\text{ V}, R_L = 3\ \Omega, R_1 = 10\ \text{k}\Omega, R_2 = 1\ \text{k}\Omega, C_1 = 47\ \text{nF})$



**Figure 9. Turn-on**  
 $(V_{in} = 3\text{ V}, R_L = 3\ \Omega, R_1 = 10\ \text{k}\Omega, R_2 = 1\ \text{k}\Omega, C_1 = 47\ \text{nF})$



**Figure 10. Turn-off**  
 $(V_{in} = 3\text{ V}, R_L = 3\ \Omega, R_1 = 10\ \text{k}\Omega, R_2 = 1\ \text{k}\Omega, C_1 = 47\ \text{nF})$

# NTLJD2105L

## TYPICAL PERFORMANCE CURVES ( $T_J = 25^\circ\text{C}$ unless otherwise noted)

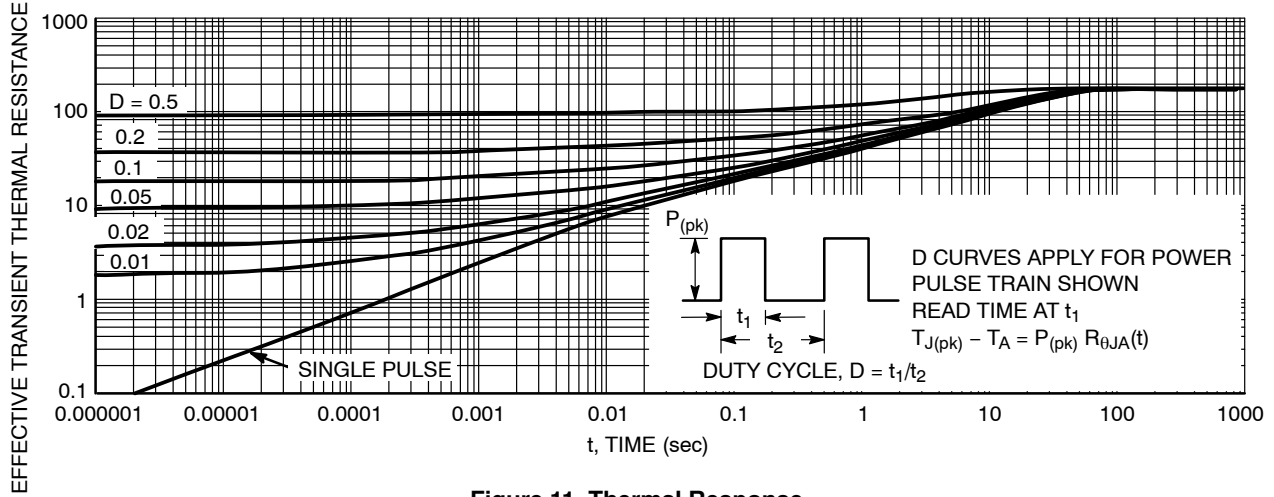


Figure 11. Thermal Response

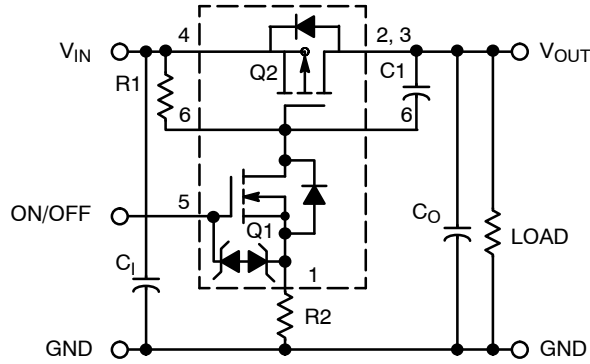


Figure 12. Load Switch Application

Components	Description	Value
R1	Pull-up Resistor	Typical 10 k $\Omega$ to 1.0 M $\Omega$ *
R2	Optional Slew-Rate Control	Typical 0 k $\Omega$ to 100 k $\Omega$ *
$C_0, C_1$	Output Capacitance	Usually < 1.0 $\mu\text{F}$
C1	Optional In-Rush Current Control	Typical $\leq$ 1000 pF

\*Minimum R1 value should be at least 10 x R2 to ensure Q1 turn-on.

### ORDERING INFORMATION

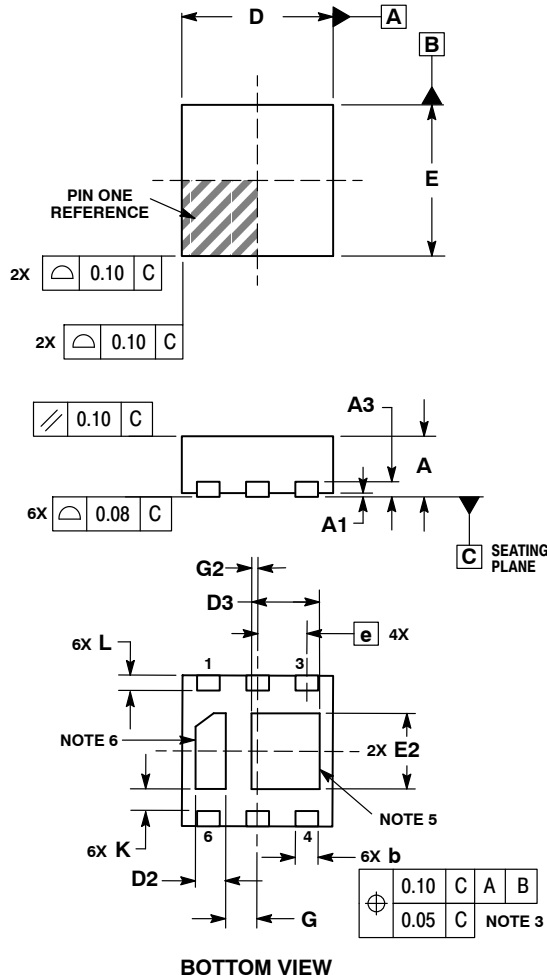
Device	Package	Shipping <sup>†</sup>
NTLJD2105LTBG	WDFN6 (Pb-Free)	3000 / Tape & Reel

<sup>†</sup>For information on tape and reel specifications, including part orientation and tape sizes, please refer to our Tape and Reel Packaging Specifications Brochure, BRD8011/D.

# NTLJD2105L

## PACKAGE DIMENSIONS

WDFN6, 2x2  
CASE 506AZ  
ISSUE A

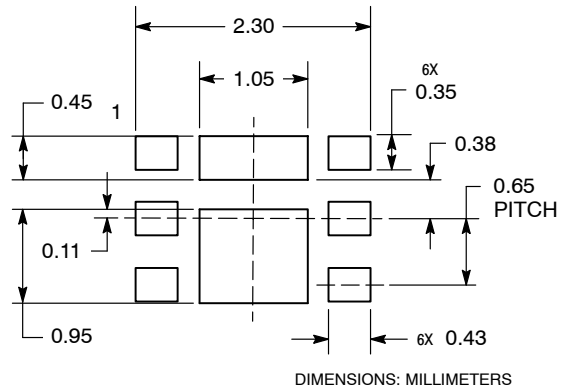


### NOTES:

1. DIMENSIONING AND TOLERANCING PER ASME Y14.5M, 1994.
2. CONTROLLING DIMENSION: MILLIMETERS.
3. DIMENSION b APPLIES TO PLATED TERMINAL AND IS MEASURED BETWEEN 0.15 AND 0.20mm FROM TERMINAL.
4. COPLANARITY APPLIES TO THE EXPOSED PAD AS WELL AS THE TERMINALS.
5. PINS 2 & 3 CONNECTED TO LARGE FLAG.
6. PIN 6 CONNECTED TO SMALL FLAG.

DIM	MILLIMETERS	
	MIN	MAX
A	0.70	0.80
A1	0.00	0.05
A3	0.20 REF	
b	0.25	0.35
D	2.00 BSC	
D2	0.30	0.50
D3	0.80	1.00
E	2.00 BSC	
E2	0.90	1.10
e	0.65 BSC	
G	0.41 REF	
G2	0.085 REF	
K	0.25 REF	
L	0.20	0.30

### SOLDERING FOOTPRINT\*



\*For additional information on our Pb-Free strategy and soldering details, please download the ON Semiconductor Soldering and Mounting Techniques Reference Manual, SOLDERRM/D.

ON Semiconductor and are trademarks of Semiconductor Components Industries, LLC dba ON Semiconductor or its subsidiaries in the United States and/or other countries. ON Semiconductor owns the rights to a number of patents, trademarks, copyrights, trade secrets, and other intellectual property. A listing of ON Semiconductor's product/patent coverage may be accessed at [www.onsemi.com/site/pdf/Patent-Marking.pdf](http://www.onsemi.com/site/pdf/Patent-Marking.pdf). ON Semiconductor reserves the right to make changes without further notice to any products herein. ON Semiconductor makes no warranty, representation or guarantee regarding the suitability of its products for any particular purpose, nor does ON Semiconductor assume any liability arising out of the application or use of any product or circuit, and specifically disclaims any and all liability, including without limitation special, consequential or incidental damages. Buyer is responsible for its products and applications using ON Semiconductor products, including compliance with all laws, regulations and safety requirements or standards, regardless of any support or applications information provided by ON Semiconductor. "Typical" parameters which may be provided in ON Semiconductor data sheets and/or specifications can and do vary in different applications and actual performance may vary over time. All operating parameters, including "Typicals" must be validated for each customer application by customer's technical experts. ON Semiconductor does not convey any license under its patent rights nor the rights of others. ON Semiconductor products are not designed, intended, or authorized for use as a critical component in life support systems or any FDA Class 3 medical devices or medical devices with a same or similar classification in a foreign jurisdiction or any devices intended for implantation in the human body. Should Buyer purchase or use ON Semiconductor products for any such unintended or unauthorized application, Buyer shall indemnify and hold ON Semiconductor and its officers, employees, subsidiaries, affiliates, and distributors harmless against all claims, costs, damages, and expenses, and reasonable attorney fees arising out of, directly or indirectly, any claim of personal injury or death associated with such unintended or unauthorized use, even if such claim alleges that ON Semiconductor was negligent regarding the design or manufacture of the part. ON Semiconductor is an Equal Opportunity/Affirmative Action Employer. This literature is subject to all applicable copyright laws and is not for resale in any manner.

### PUBLICATION ORDERING INFORMATION

#### LITERATURE FULFILLMENT:

Literature Distribution Center for ON Semiconductor  
19521 E. 32nd Pkwy, Aurora, Colorado 80011 USA  
Phone: 303-675-2175 or 800-344-3860 Toll Free USA/Canada  
Fax: 303-675-2176 or 800-344-3867 Toll Free USA/Canada  
Email: [orderlit@onsemi.com](mailto:orderlit@onsemi.com)

**N. American Technical Support:** 800-282-9855 Toll Free  
USA/Canada  
**Europe, Middle East and Africa Technical Support:**  
Phone: 421 33 790 2910  
**Japan Customer Focus Center**  
Phone: 81-3-5817-1050

**ON Semiconductor Website:** [www.onsemi.com](http://www.onsemi.com)  
**Order Literature:** <http://www.onsemi.com/orderlit>

For additional information, please contact your local Sales Representative

## Looking for pricing, stock, or lifecycle information?

Click below to explore more details on WIN SOURCE:

 [View NTLJD2105LTBG on WIN SOURCE](#)

 [ON Semiconductor](#) Information

## Optimize Your Supply Chain with WIN SOURCE Solutions

-  Global Sourcing Solution
-  Obsolete Management
-  Cost Control Management
-  Shortage Management
-  Alternative Solution
-  Excess Inventory Management