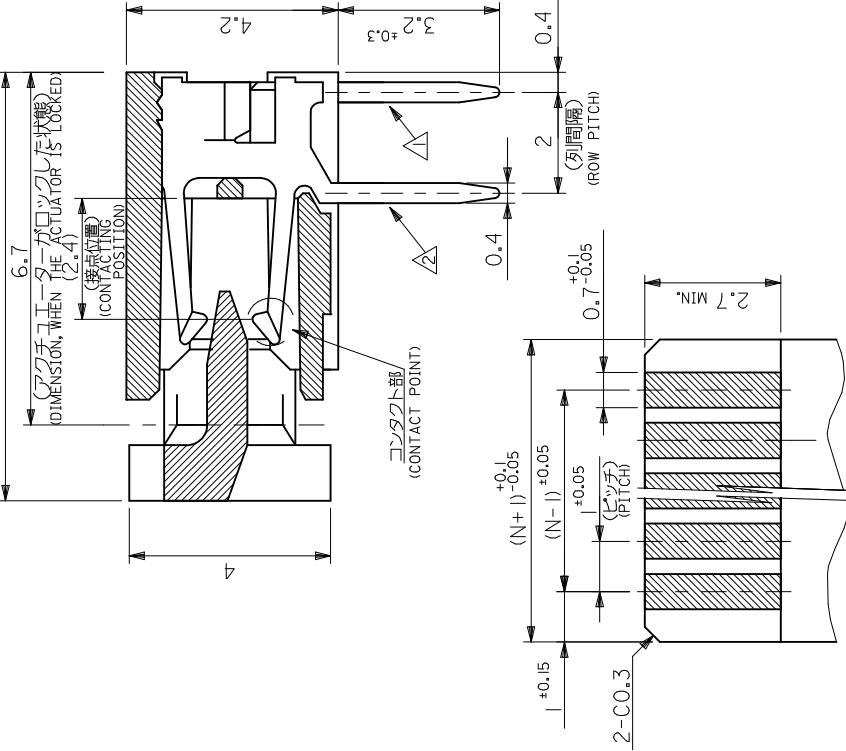
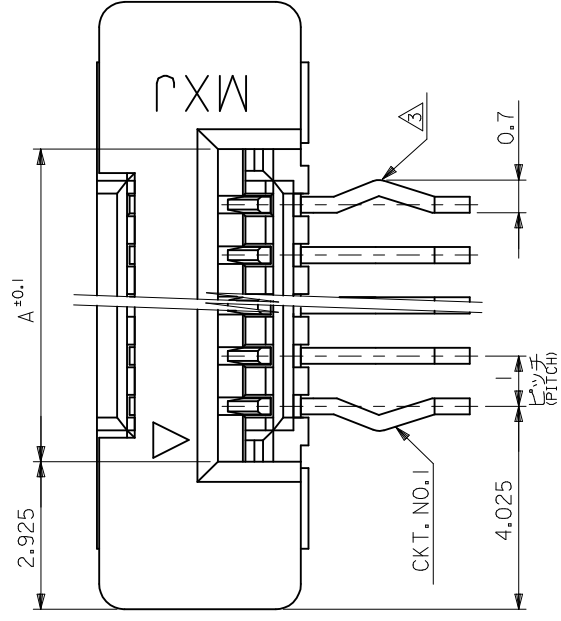




**THE DATASHEET OF**  
**52043-0919**



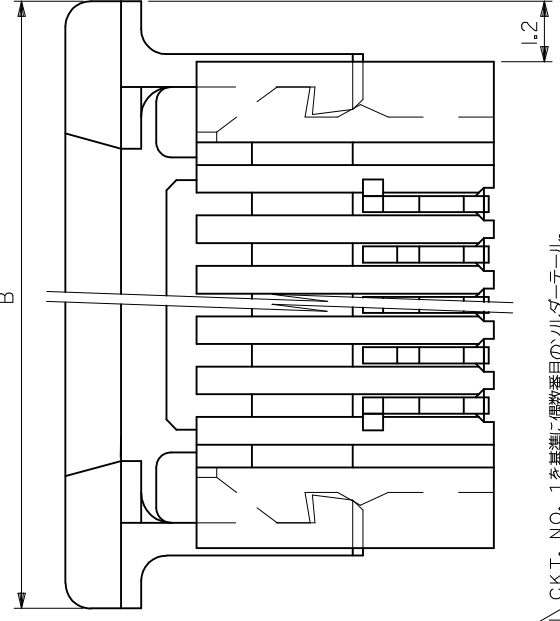
10 9 8 7 6 5 4 3



(仕上り厚さ: 0.3 ±0.05)  
(THICKNESS: 0.3 ±0.05)  
適合FPC推奨寸法  
適用FPC推奨寸法

APPLICABLE FPC RECOMMENDED DIM.

FPCについて:  
打抜き方向は薄体側から補強板を推奨します。補強フィルム材質はポリイミドを推奨致します。  
接合部は熱硬化接着剤を推奨します。  
ABOUT FPC:  
RECOMMENDED PUNCHER DIRECTION : FROM CONDUCTOR SIDE TO STIFFENER BOARD SIDE.  
RECOMMENDED MATERIAL :  
STIFFENER FILM : POLYIMIDE  
BONDING AGENT : POLYIMIDE  
THERMOSETTING BONDING AGENT



- 注記: △ CKT. NO. 1を基準に偶数番目のソルダータール。  
 ○ EVEN NUMBER SOLDER TAIL.  
 △ CKT. NO. 1を基準に奇数番目のソルダータール。  
 ○ ODD NUMBER SOLDER TAIL.  
 △ ソルダータールキークは、△のソルダータールの両端部に設ける。  
 △ KINK TO BE APPLIED FOR THE BOTH END OF ODD NUMBER SOLDER TAIL.  
 4. 材料: ターミナル: リン青銅、ニッケル下地 鍍スズメッキ (t=0.32)  
 MATERIAL: TERMINAL-PHOSPHOR BRONZE, TIN-BISMUTH OVER NICKEL PLATING (t=0.32)  
 ハウジング: 66ナイロン, UL 94V-0  
 HOUSING: 66NYLON,UL94V-0  
 アクチュエータ: ポリエステル, UL 94V-0  
 ACTUATOR: POLYESTER,UL94V-0  
 5. 本製品は 52043-\*\*\*10 の純フリー品である。  
 THIS PRODUCT IS LEAD FREE OF 52043-\*\*\*10.

REVISED	EC NO. J2016-1317	DRM:N:SHIBATA	2016/06/29	A	CHKD:Y0110	2016/06/30	APR:Y0110	2016/06/30	REV
GENERAL TOLERANCES (UNLESS SPECIFIED)	0.25 UNDER	±0.03	UNDER	±0.03	DRAWN BY	YWADA	DATE	2004/05/19	TITLE
	0.25 OVER	0.5	UNDER	±0.05	CHECKED BY	MSASAO	DATE	2004/05/19	
	0.5 OVER	1.0	UNDER	±0.1	APPROVED BY				
	1.0 OVER	10	UNDER	±0.2	MATERIAL NO.				DOCUMENT
	10 OVER	30	UNDER	±0.25	SEE TABLE				
	30 OVER	±0.3							
ANGULAR		±3 °	DRAFT WHERE APPLICABLE MUST REMAIN WITHIN DIMENSIONS						
SIZE		A3	THIS DRAWING CONTAINS INFORMATION TECHNOLOGIES, LLC AND S						

tp\_frame\_A3\_J\_ME-S Rev J 2015/09/01 9 8 7 6 5 4 3

## Looking for pricing, stock, or lifecycle information?

Click below to explore more details on WIN SOURCE:

 [View 52043-0919 on WIN SOURCE](#)

 [Molex, LLC Information](#)

## Optimize Your Supply Chain with WIN SOURCE Solutions

-  Global Sourcing Solution
-  Obsolete Management
-  Cost Control Management
-  Shortage Management
-  Alternative Solution
-  Excess Inventory Management