



THE DATASHEET OF
5913501102F

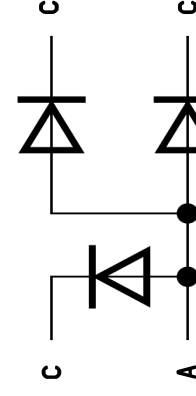


ABSOLUTE MAXIMUM RATINGS AT 25 °C AMBIENT	RED	GREEN	BLUE	UNITS
CONTINUOUS FORWARD CURRENT (ONE CHIPS ON)	30	20	20	V
CONTINUOUS FORWARD CURRENT (ALL CHIPS ON)	30	20	20	V
OPERATING TEMPERATURE	-40 TO +100			°C
STORAGE TEMPERATURE	-40 TO +100			°C
POWER CONSUMPTION	80	85	85	mW

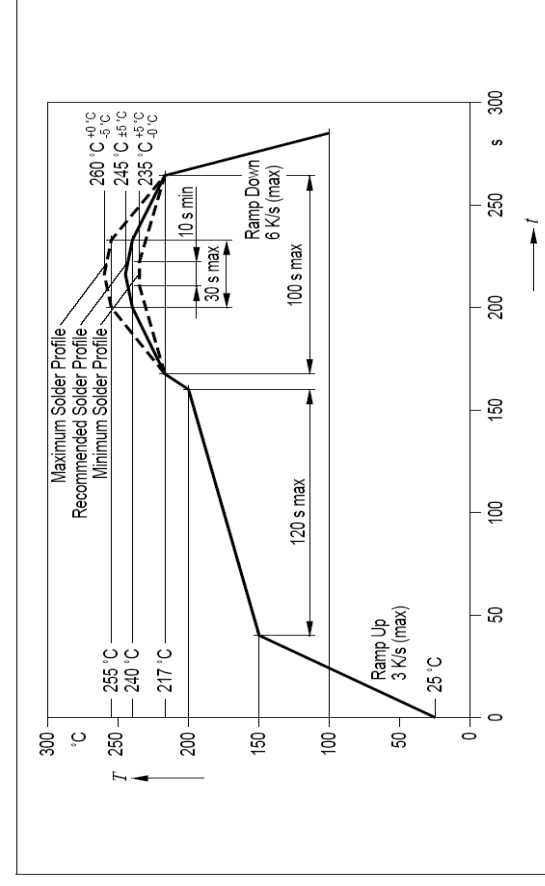
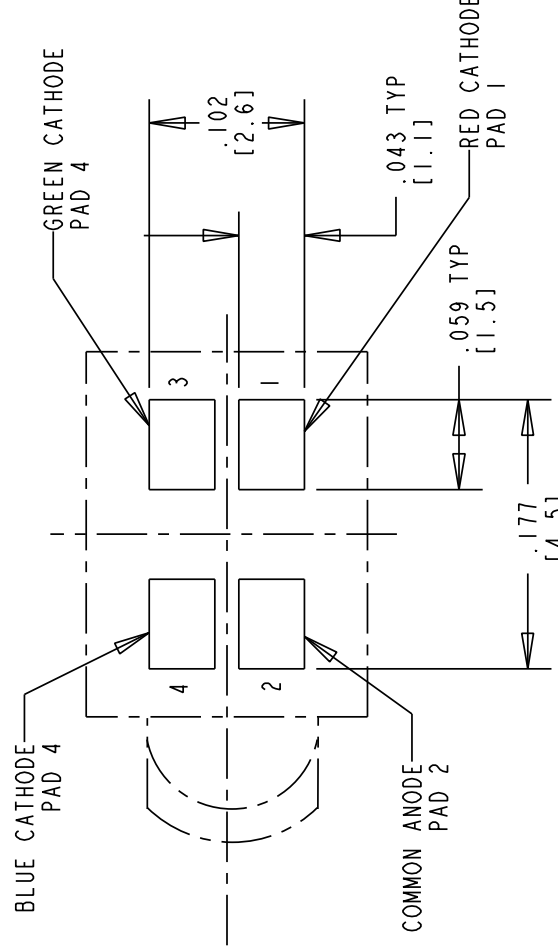
TRI-COLOR LEADS
OPERATING CHARACTERISTICS AT T_a = 25 °C

REV	A
-----	---

LED CHARACTERISTICS	COLOR	MIN.	TYP.	MAX.	UNITS	TEST CONDITIONS
FORWARD VOLTAGE	RED	1.83	2.0	2.33		
	GREEN	3.0	3.5	4.1	V	I _f = 20 mA
	BLUE	3.0	3.6	4.1		
REVERSE CURRENT	RED	0.01		10	mA	VR = 12 V (RED) VR = 5 V (GREEN/BLUE)
	GREEN	0.01		10		
	BLUE	0.01		10		
PEAK WAVELENGTH	RED		622		nm	
	GREEN		523			
DOMINANT WAVELENGTH	BLUE		465			
	RED	615	617	625		
VIEWING ANGLE (2 θ 1/2)	GREEN	520	528	538	nm	I _f = 20 mA
	BLUE	463	470	475		
LUMINOUS INTENSITY	RED	40		45	DEG.	I _f = 20 mA
	BLUE	40		45		
LUMINOUS INTENSITY	RED	50	90	140	mc/d	I = 20 mA
	GREEN	270	340	420		
	BLUE	50	80	130		

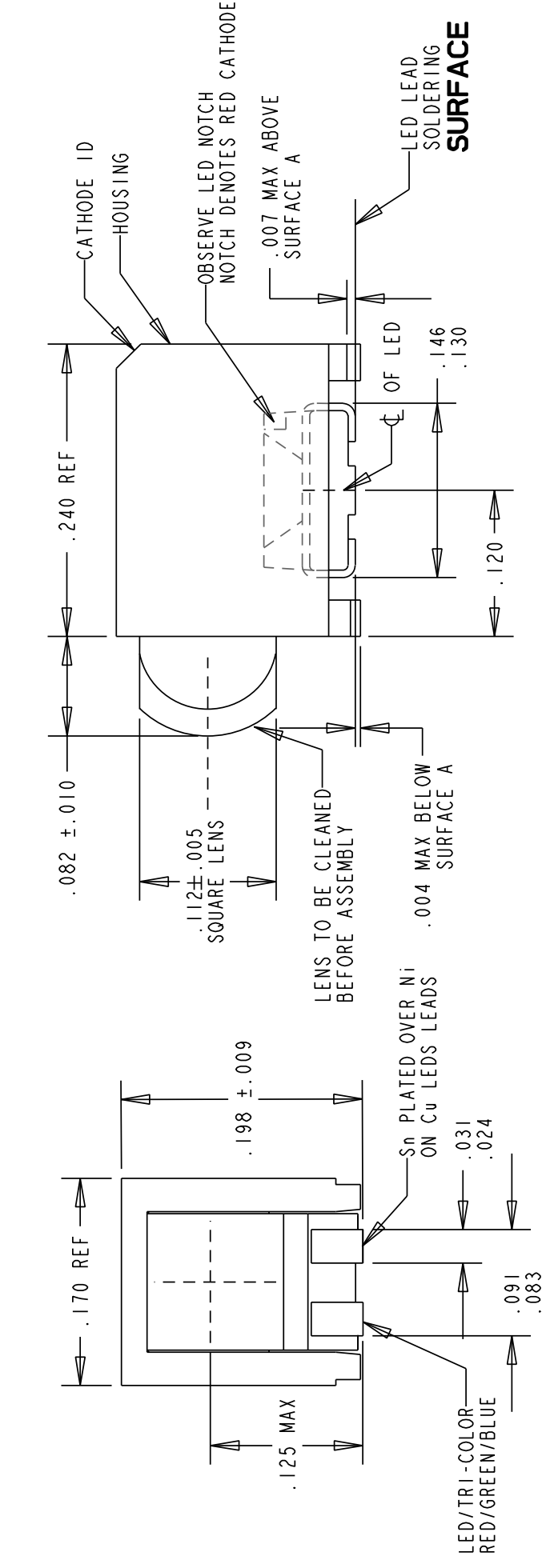


CIRCUIT DIAGRAM



RoHS REFLOW PROFILE

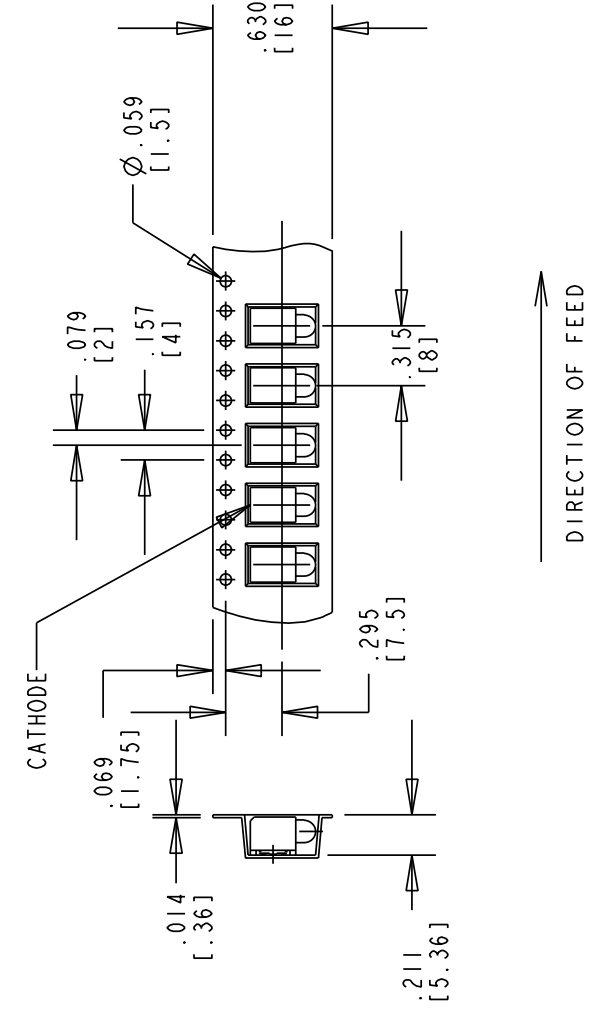
COMPONENT SIDE
RECOMMENDED PC BOARD LAND PATTERN
(DIM'S ±.004)
0.1MM



NOTES:

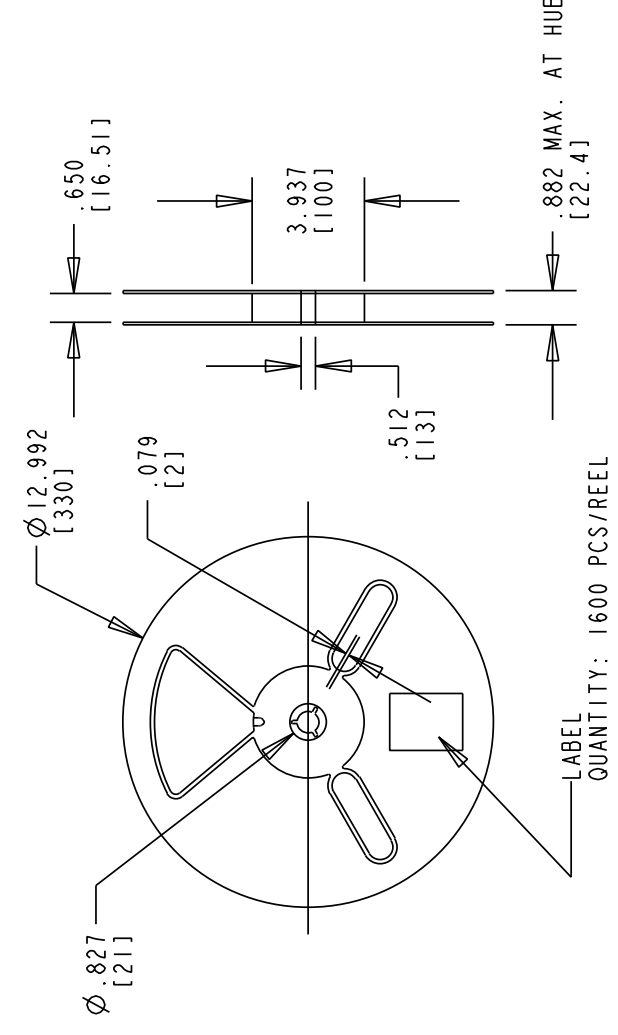
1. MILLIMETER DIMENSIONS SHOWN FOR REFERENCE ONLY.
2. PAD NUMBERS FOR REFERENCE ONLY, DESIGNATION NON-EXISTENT.
3. STORAGE CONDITIONS FOR TAPED PRODUCT: RE-TAPING MAY BE PERMITTED FOR UP TO TWELVE MONTHS.
4. ORDER QUANTITY IS LED ASSEMBLIES, NOT REELS.
5. -102F SUFFIX MEANS PARTS ARE PACKED ON A 70 PCS SAMPLE REEL.
6. -107F SUFFIX MEANS PARTS ARE PACKED ON A 7 INCH REEL.
7. -113F SUFFIX MEANS PARTS ARE PACKED ON A 13 INCH REEL.
8. LENS MOVEMENT IN RELATIONSHIP TO THE HOUSING IS: .009" T.I.R. VERTICALLY, .007" T.I.R. HORIZONTALLY.
9. FRONT AND REAR TERMINALS OF ASSEMBLY TO BE WITHIN .001" OF SURFACE A.
10. DEVICE HAS A MOISTURE SENSITIVITY LEVEL "2" CAUTION L1.
11. APPLIED AS PER JEDEC STD. J-033.
12. THIS PRODUCT IS Pb FREE. IT IS IN COMPLIANCE WITH THE ROHS 2002/95/EC (ROHS) AND DOES NOT CONTAIN ANY OF THE BANNED SUBSTANCES: Pb, Cd, MERCURY, HEXAVALENT CHROMIUM OR FLAME RETARDANTS.
13. REFER TO DIALIGHT P/N 591-3501-102F, 591-3501-107F & 591-3501-113F FOR PRECAUTIONARY MEASURES.
14. THIS ASSEMBLY CONTAINS ELECTROSTATIC DISCHARGE SENSITIVE DEVICES (ESDS). MAINTAIN ALL PRECAUTIONARY MEASURES DURING ASSEMBLY, HANDLING AND STORAGE IN ACCORDANCE WITH IPC 62000.

TAPING SPECIFICATION

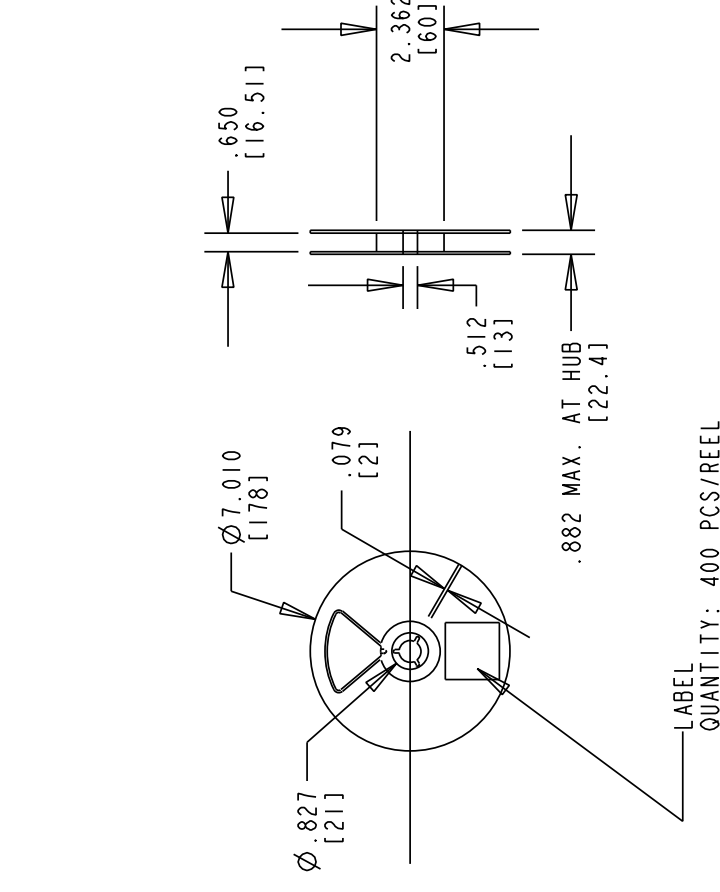


TOLERANCE: .004 UNLESS OTHERWISE SPECIFIED.
MILLIMETER DIMENSIONS SHOWN FOR REFERENCE ONLY.

REEL SPECIFICATION



13 INCH DIA. REEL SPECIFICATIONS



7 INCH DIA. REEL SPECIFICATIONS

Looking for pricing, stock, or lifecycle information?

Click below to explore more details on WIN SOURCE:

[View 5913501102F on WIN SOURCE](#)

[Dialight Information](#)

Optimize Your Supply Chain with WIN SOURCE Solutions

- ✓ Global Sourcing Solution
- ✓ Obsolete Management
- ✓ Cost Control Management
- ✓ Shortage Management
- ✓ Alternative Solution
- ✓ Excess Inventory Management