

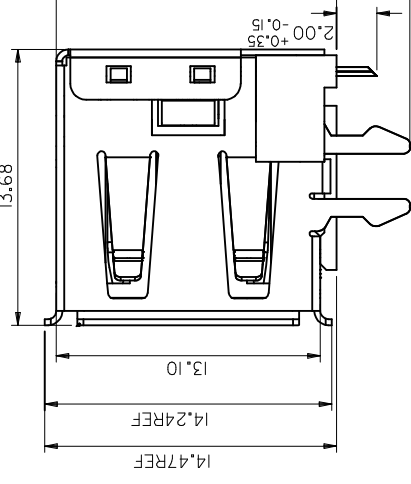
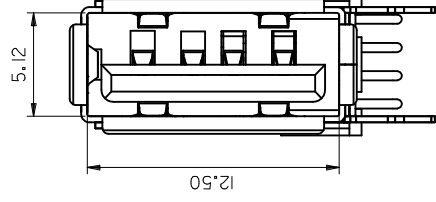
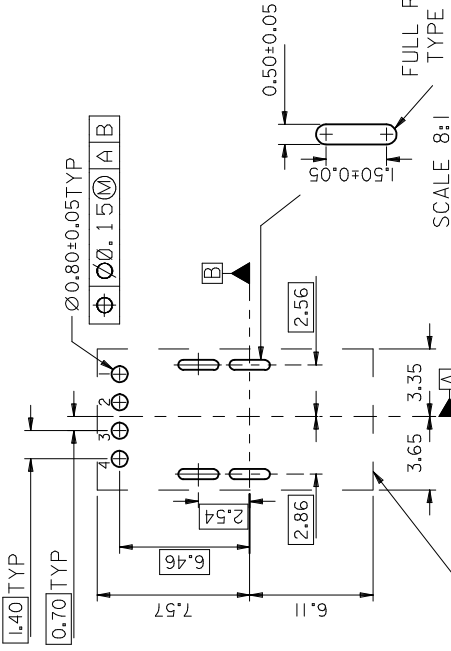
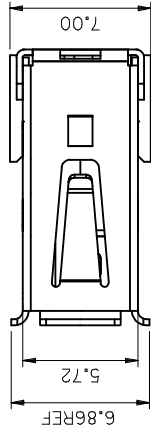
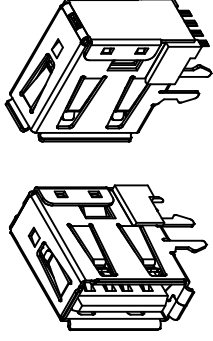


THE DATASHEET OF
67329-8020



NOTES :

1. MATERIAL :
 HOUSING : HIGH TEMPERATURE NYLON , GLASS FIBER ,UL94-V0 , COLOR: BLACK
 TERMINAL : PHOSPHOR BRONZE(PbBr), C5100 EH, PER ES-124-E108
 METAL SHELL : COPPER ALLOY
2. PLATING :
 TERMINAL :
 CONTACT AREA : (a) GOLD FLASH,
 (b) GILD (Au), THICKNESS = 30 MICROINCH/0.76 MICROMETER
 SOLDER TAIL : TIN,
 THICKNESS=50-100 MICROINCH/1.27-2.54 MICROMETER
 UNDER PLATE : NICKEL (Ni), THICKNESS= 50 MICROINCH/1.27 MICROMETER
 METAL SHELL : TIN,
 THICKNESS=50-100 MICROINCH/1.27-2.54 MICROMETER
3. UNDER PLATE : NICKEL (Ni), THICKNESS= 50 MICROINCH/1.27 MICROMETER
 SURFACE APPEARANCE :BRIGHT
4. RECOMMENDED PCB THICKNESS : 1.60±0.05 mm.
5. PRODUCT SPECIFICATION : REFER TO PS-89485
6. PACKAGING SPECIFICATION : REFER TO PK-67329-001



THE EDGE OF THE CONNECTOR

SCALE 8:1

FULL R TYPE

PART NUMBER LEGEND:

P/N	CONTACT PLATING
67329-8020	GOLD FLASH
67329-8021	0.76 MICROMETER/30 MICROINCH GOLD

REV	DESCRIPTION	QUALITY SYMBOLS	GENERAL TOLERANCES (UNLESS SPECIFIED)	DIMENSION STYLE	SCALE
	FC NO: 2005/12/09	DRW:HPOLAN	4 PLACES ± ---	MM ONLY	4
	CHKD:HARVEY	2006/01/10	3 PLACES ± ---	DRAWN BY: QIANHUIPING	DATE: 2005/12/09
	APPR:HWANG	2006/01/10	2 PLACES ± 0.25	CHECKED BY: HARVEY	DATE: 2005/12/09
			1 PLACE ± 0.25	APPROVED BY: GARY	DATE: 2005/12/09
NEW RELEASE			ANGULAR ± 3°	MATERIAL NO. SEE CHART	DOCUMENT NO. SD-
DRAFT WHERE APPLICABLE MUST REMAIN WITHIN DIMENSIONS				SIZE: A3	THIS DRAWING CONTAINS INCORPORATED AND SHOULD

Looking for pricing, stock, or lifecycle information?

Click below to explore more details on WIN SOURCE:

 [View 67329-8020 on WIN SOURCE](#)

 [Molex, LLC Information](#)

Optimize Your Supply Chain with WIN SOURCE Solutions

-  Global Sourcing Solution
-  Obsolete Management
-  Cost Control Management
-  Shortage Management
-  Alternative Solution
-  Excess Inventory Management