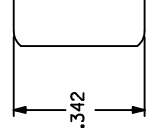
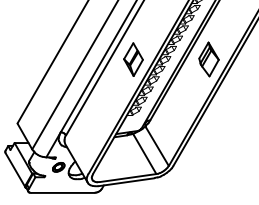
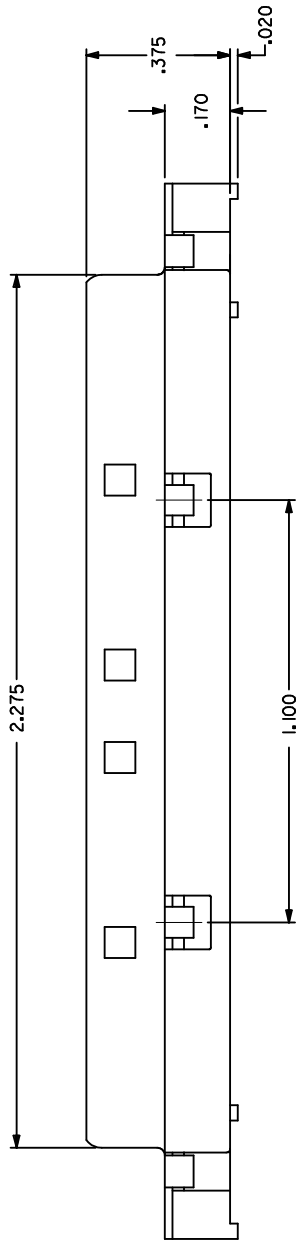
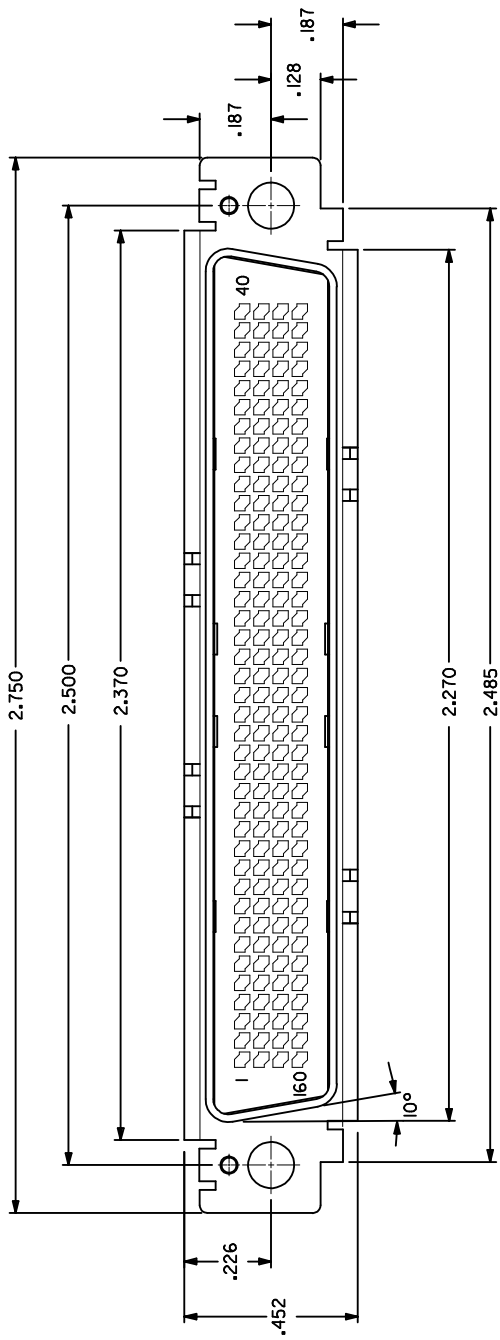




THE DATASHEET OF
71624-3000





NOTES

1. MATERIALS:
INSULATOR: GLASS FILLED LCP, 94V-0, COLOR BLACK.
SHIELD: DEEP DRAW STEEL, .020" THICK.
2. PLATING: 100 MICRO-INCHES MINIMUM BRIGHT NICKEL OVER COPPER UNDERPLATE OVERALL.
3. CONFORMS TO PRODUCT SPECIFICATION PS-71626.
4. CONFORMS TO APPLICATION SPECIFICATION PS-71624.
5. INSERT MOLDED CONTACT STRIPS ARE SUPPLIED SEPARATELY, SEE SALES DRAWING* SDA-70984-4*** FOR ORDER NUMBERS.
6. BULK PACKAGING: 100 SUB-ASSEMBLIES PER CARTON

EC NO: UCP2016-0871	DRWN:SVANG01	2015/08/26
CHK'D:DMORGAN	2015/08/26	
APP'R:SMILLER	2015/09/10	
DESCRIPTION		
REV		

QUALITY SYMBOLS	GENERAL TOLERANCES (UNLESS SPECIFIED)	INCH
= 0	4 PLACES ±	±
= 0	3 PLACES ±	±
= 0	2 PLACES ±	±
	1 PLACE ±	±
	0 PLACE ±	±

ANGULAR ±1/2°	DRAFT WHERE APPLICABLE MUST REMAIN WITHIN DIMENSIONS
---------------	--

DIMENSION STYLE	IN/MM
DRAWN BY	SVANG01
DATE	2015/08/26
CHECKED BY	DMORGAN
DATE	2015/08/26
APPROVED BY	SMILLER
DATE	2015/09/10
MATERIAL NO.	

SEE TABLE
THIS DRAWING CONTAINS INCORPORATED AND S

Looking for pricing, stock, or lifecycle information?

Click below to explore more details on WIN SOURCE:

 [View 71624-3000 on WIN SOURCE](#)

 [Molex, LLC Information](#)

Optimize Your Supply Chain with WIN SOURCE Solutions

-  Global Sourcing Solution
-  Obsolete Management
-  Cost Control Management
-  Shortage Management
-  Alternative Solution
-  Excess Inventory Management