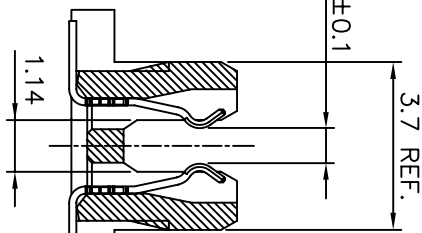
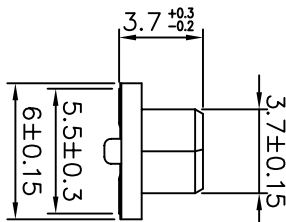
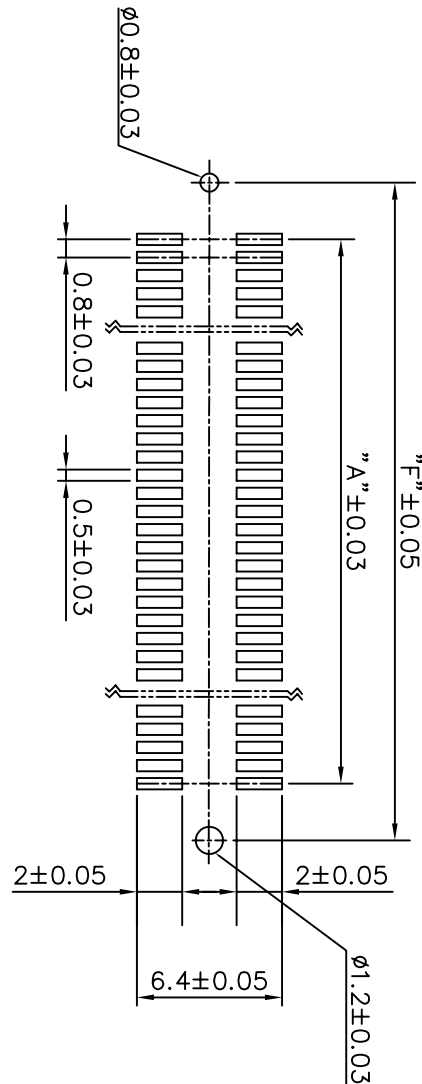
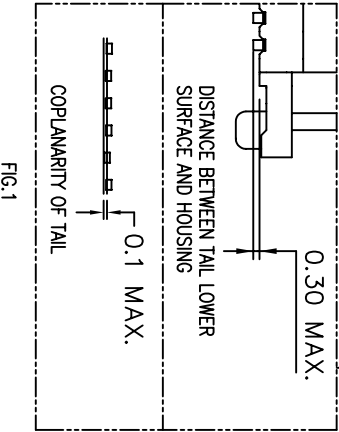
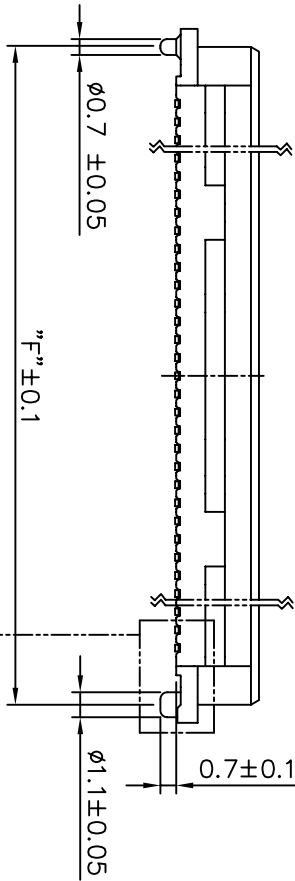
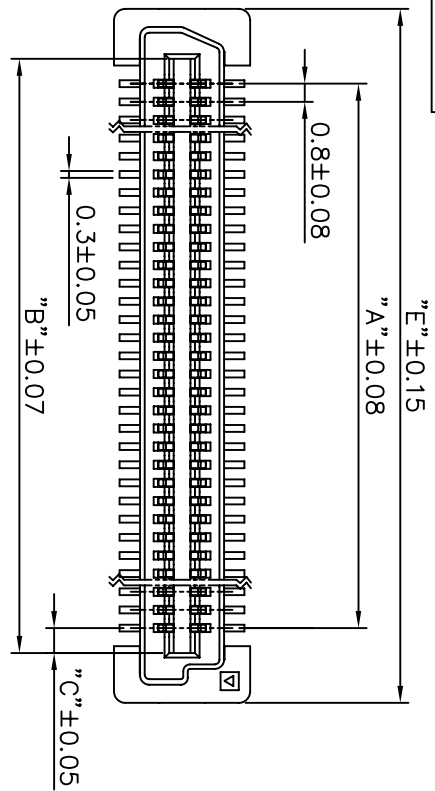




**THE DATASHEET OF**  
**73277-101002**



PRODUCT NO.  
73277-XX1XXXXXX

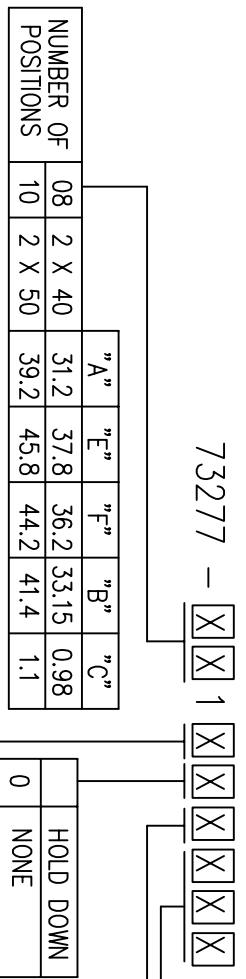


NOTE: RECOMMENDED TRANSITION BOARD THICKNESS IS 1.0 ±0.05MM

mat'l. code	ecm no	dr	date	surface	tolerance	projection	product family
				ISO 1302	ISO 406 ISO 1101	mm	BERGSTAK
G	T03-0103	MW	4/3/03	tolerances unless otherwise specified	0.0±0.38	0.8mm BOARD TO BOARD	
H	T03-0214	MW	06/10/03		0.0±0.25	MOD. RECEPTACLE ASS'Y	
J	T03-0379	MW	09/04/03	0°±2°	0.00±0.15		
K	T04-0094	MW	03/05/04				
L	S04-0133	MW	08/24/04	engr			
M	S04-0251	CH	11/23/04	chr			
N	S06-0196	MC	07/04/06	ppd			
sheet	revision	N	L				
index	sheet	1	2				



1 2 3 4 5 6



NONE	COLOR	BLACK, 16-659-012 OR 16-522-016
1		NATURAL, 16-522-015
LF (note 6)		BLACK, 16-659-012 OR 16-522-016 (For Lead Free Plating Option 4, 5 and 6)
11F (note 6)		NATURAL, 16-522-015 (For Lead Free Plating Option 4, 5 and 6)

PLATING	
0	NICKEL UNDERPLATE OVERALL 1.27 um MIN, GOLD PLATED: 0.2 umMIN. ON CONTACT AREA
1	NICKEL UNDERPLATE OVERALL 1.27 um MIN, GOLD PLATED: 0.1 umMIN OVER PALLADIUM-NICKEL ALLOY :0.76umMIN ON CONTACT AREA
4	NICKEL UNDERPLATE OVERALL 1.27 um MIN, GOLD PLATED: 0.2 umMIN. ON CONTACT AREA SOLDER AREA PLATED PURE TIN 2.5um MIN.
5	NICKEL UNDERPLATE OVERALL 1.27 um MIN, GOLD PLATED: 0.38 umMIN ON CONTACT AREA SOLDER AREA PLATED PURE TIN 2.5um MIN.
6	NICKEL UNDERPLATE OVERALL 1.27 um MIN, GOLD PLATED: 0.1 umMIN OVER PALLADIUM-NICKEL ALLOY :0.76umMIN ON CONTACT AREA SOLDER AREA PLATED PURE TIN 2.5um MIN.

PACKAGING	
0	STICK
1	TAPE & REEL WITHOUT CAP
2	TAPE & REEL WITH CAP
9	STICK WITH CAP
8	TAPE & REEL WITH KAPTON

NOTES:

- 1.MATERIAL  
HOUSING:G.F.LCPC UL94V-0  
COLOR: AS TABLE SHOWN.  
TERMINAL:BERYLLIUM COPPER.
- 2.PLATING  
AS TABLE SHOWN.
- 3.PACKAGING  
SEE NO. GS-14-551 FOR PACKAGING SPECIFICATION.
- 4.SEE GS-12-148 FOR PRODUCT SPECIFICATION.
- 5.TAIL COPLANARITY  
DISTANCE BETWEEN TAIL LOWER SURFACE AND HOUSING:SEE FIG.1.  
COPLANARITY TO BE 0.1 MAX.
- 6 THIS PRODUCT MEETS EUROPEAN UNION DIRECTIVE AND OTHER COUNTRY REGULATIONS AS DESCRIBED IN GS-22-008
7. THE HOUSING WILL WITHSTAND EXPOSURE TO 260 °C FOR 10 SECS IN A CONNECTION, INFRA-RED OR VAPOR PHASE REFLOW OVEN



mat'l. code	ISO 1302	tolerance	ISO 406	ISO 1101	projection	product family
ecr no	dr	date	tolerances unless otherwise specified			BERGSTAK
L	S06-0196	MC	07/04/06	0±0.38	mm	0.8mm BOARD TO BOARD MOD. RECEPTACLE ASS'Y
				.00±0.25	mm	
				0±.2	mm	
dr				.000±0.15	mm	
engr	YU WEN CHU		8/18/00			
chr	CHEN HONG		11/23/04			
pppd	NG JOEY		11/23/04			
sheet index	revision					



form: A4 1 2 3 4 5 6

## Looking for pricing, stock, or lifecycle information?

Click below to explore more details on WIN SOURCE:

-  [View 73277-101002 on WIN SOURCE](#)
-  [Amphenol FCI Information](#)

## Optimize Your Supply Chain with WIN SOURCE Solutions

-  Global Sourcing Solution
-  Obsolete Management
-  Cost Control Management
-  Shortage Management
-  Alternative Solution
-  Excess Inventory Management