






**THE DATASHEET OF
S9014**



SPECIFICATION SHEET

SPECIFICATION SHEET NO.	N1116- SOT23S9014S0J6
DATE	Nov. 16, 2021
REVISION	A1
DESCRIPTION	<p>SMD Plastic-Encapsulate Transistors, SOT-23 series, 3 pads</p> <p>S9014 Type, NPN</p> <p>Collector Power Dissipation 200mW. Collector Current 100mA Max.</p> <p>Operating Temp. Range -55°C ~+150°C</p> <p>Package in Tape/Reel, 3000pcs/Reel</p> <p>RoHS/RoHS III compliant</p>
CUSTOMER	
CUSTOMER PART NUMBER	
CROSS REF. PART NUMBER	
ORIGINAL PART NUMBER	MDD S9014
PART CODE	SOT23S9014S0J6

VENDOR APPROVE		
Issued/Checked/Approved		
		
DATE: Nov. 16, 2021		

CUSTOMER APPROVE
DATE:

SMD PLASTIC-ENCAPULATE TRANSISTORS SOT23 SERIES

MAIN FEATURE

- Epitaxial planar die construction
- Complementary to P/N. S9015
- Collector Power Dissipation 200mW
- Collector Current 100mA.



APPLICATION

- For printed circuit board

RFQ

[Request For Quotation](#)

PART CODE GUIDE

SOT23	S9014	S	0J6
1	2	3	4

1) **SOT23**: SMD Plastic-Encapsulate Transistors, 3 pads SOT-23 series Code

2) **S9014**: Type code for S9014

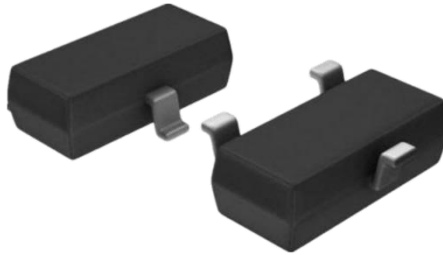
3) **S**: Package code, Package in Tape/Reel, 3000pcs/Reel

4) **0J6**: Marking code for "J6" on the case surface, Different Marking for different specification.

SMD PLASTIC-ENCAPULATE TRANSISTORS SOT23 SERIES

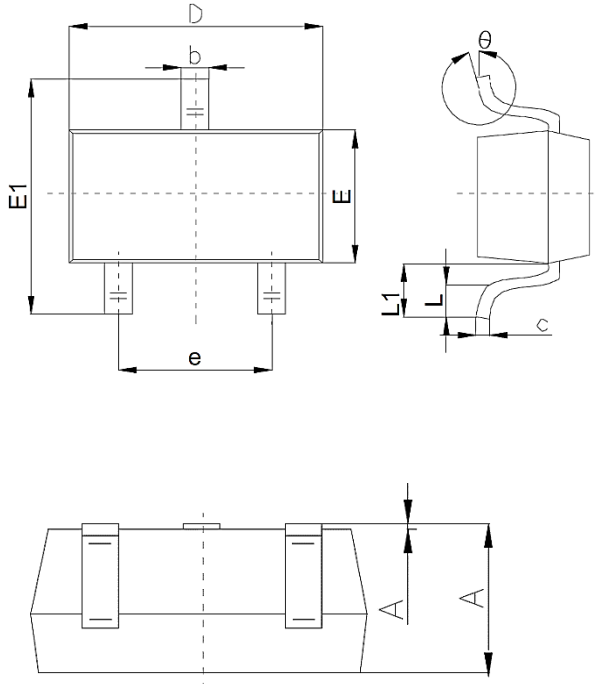
DIMENSION (Unit: Inch/mm)

Image for reference



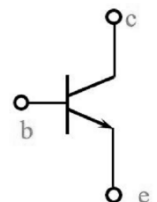
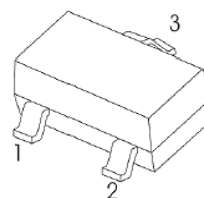
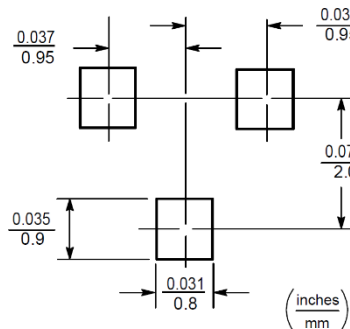
Marking: J6

SOT-23



Symbol	Value (mm)		
	Min.	Typ.	Max.
A	1.0		1.4
A1			0.10
b	0.35		0.50
c	0.10		0.20
D	2.70	2.90	3.10
E	1.40		1.60
E1	2.40		2.80
e		1.9	
L	0.10		0.30
L1	0.40		
θ	0°		10°

Recommend Pad Layout



- 1.Base
- 2.Emitter
- 3.Collector

SMD PLASTIC-ENCAPULATE TRANSISTORS SOT23 SERIES
MECHANICAL DATA

Case	Terminals	Polarity	Mounting Position	Weight per piece
JEDEC SOT-23 molded plastic body	Solder plated, Solderable per MIL-STD-750, Method 2026	Polarity symbol marking on case	Any	0.00019 Ounce, 0.00591 grams

MAX. RATINGS AT Ta=25 °C

Parameter	SYMBOLS	VALUE	UNITS
		LIMIT	
Collector-Base Voltage	V _{CBO}	50	Volts
Collector-Emitter Voltage	V _{CEO}	45	Volts
Emitter-Base Voltage	V _{EBO}	5	Volts
Collector Current-Continuous	I _C	100	mA
Collector Power Dissipation	P _C	200	mW
Thermal Resistance Junction to Ambient	R _{QJA}	625	°C/W
Junction temperature	T _J	+150	°C
Storage temperature range	T _{STG}	-55 ~ +150	°C

SMD PLASTIC-ENCCAPULATE TRANSISTORS SOT23 SERIES
ELECTRICAL CHARACTERISTICS AT Ta= 25 °C

Parameter	SYMBOLS	VALUE			UNIT	Condition
		Min.	Typ.	Max.		
Collector-base breakdown voltage	$V_{(BR)CBO}$	50			V	$I_C = 100\mu A, I_E = 0$
Collector-emitter breakdown voltage	$V_{(BR)CEO}^*$	45			V	$I_C = 1mA, I_B = 0$
Emitter-base breakdown voltage	$V_{(BR)EBO}$	5			V	$I_E = 100\mu A, I_C = 0$
Collector cut-off current	I_{CBO}			0.1	μA	$V_{CB} = 50V, I_E = 0$
Collector cut-off current	I_{CEO}			1	μA	$V_{CE} = 35V, I_E = 0$
Emitter cut-off current	I_{EBO}			0.1	μA	$V_{EB} = 3V, I_C = 0$
DC Current gain	h_{FE}	200		1000		$V_{CE} = 5V, I_C = 1mA$
Collector-emitter saturation voltage	$V_{CE(sat)}$			0.3	V	$I_C = 100mA, I_B = 5mA$
				-		
Base-emitter saturation voltage	$V_{BE(sat)}$			1	V	$I_C = 100mA, I_B = 5mA$
				-		
Transition frequency	f_T	150			MHz	$V_{CE} = 5V, I_C = 10mA, f = 30MHz$
Delay time	t_d			-	ns	$V_{CC} = 3V, V_{BE} = -0.5V, I_C = 10mA, I_{B1} = -I_{B2} = 1.0mA$
Rise time	t_r			-	ns	
Storage time	t_s			-	ns	$V_{CC} = 3V, I_C = 10mA, I_{B1} = -I_{B2} = 1.0mA$
Fall time	t_f			-	ns	

CLASSIFICATION OF h_{FE}

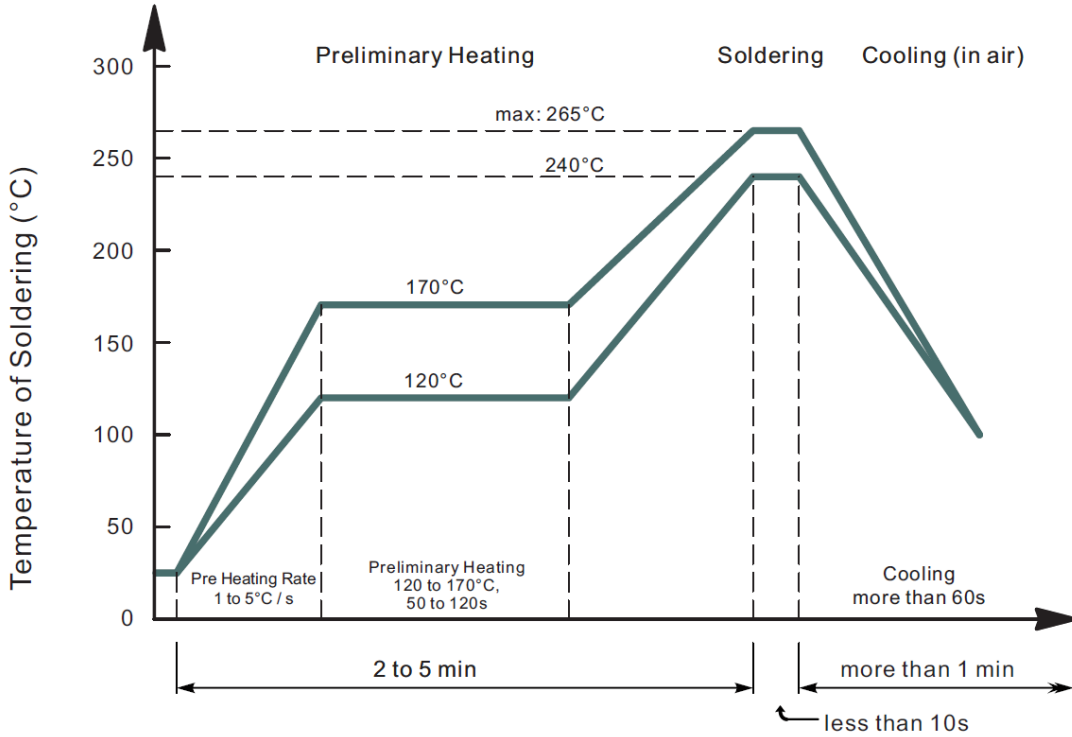
Rank	L	H
Range	200 ~ 450	450 ~ 1000
Marking	J6	J6

SMD PLASTIC-ENCAPULATE TRANSISTORS SOT23 SERIES
RELIABILITY

Number	Experiment Items	Experiment Method And Conditions	Reference Documents
1	Solder Resistance Test	Test 260°C± 5°C for 10 ± 2 sec. Immerse body into solder 1/16" ± 1/32"	MIL-STD-750D METHOD-2031.2
2	Solderability Test	230°C ±5°C for 5 sec.	MIL-STD-750D METHOD-2026.1 0
3	Pull Test	1 kg in axial lead direction for 10 sec.	MIL-STD-750D METHOD-2036.4
4	Bend Test	0.5Kg Weight Applied To Each Lead, Bending Arcs 90 °C ± 5 °C For 3 Times	MIL-STD-750D METHOD-2036.4
5	High Temperature Reverse Bias Test	TA=100°C for 1000 Hours at VR=80% Rated VR	MIL-STD-750D METHOD-1038.4
6	Forward Operation Life Test	TA=25°C Rated Average Rectified Current	MIL-STD-750D METHOD-1027.3
7	Intermittent Operation Life Test	On state: 5 min with rated IRMS Power Off state: 5 min with Cool Forced Air. On and off for 1000 cycles.	MIL-STD-750D METHOD-1036.3
8	Pressure Cooker Test	15 PSIG, TA=121°C, 4 hours	MIL-S-19500 APPENOIXC
9	Temperature Cycling Test	-55°C~+125°C; 30 Minutes For Dwelled Time 5 minutes for transferred time. Total: 10 cycles.	MIL-STD-750D METHOD-1051.7
10	Thermal Shock Test	0°C for 5 minutes., 100°C for 5minutes, Total: 10 cycles	MIL-STD-750D METHOD-1056.7
11	Forward Surge Test	8.3ms Single Sale Sine-wave One Surge.	MIL-STD-750D METHOD-4066.4
12	Humidity Test	TA=65°C, RH=98% for 1000 hours.	MIL-STD-750D METHOD-1021.3
13	High Temperature Storage life Test	150°C for 1000 Hours	MIL-STD-750D METHOD-1031.5

SMD PLASTIC-ENCAPULATE TRANSISTORS SOT23 SERIES

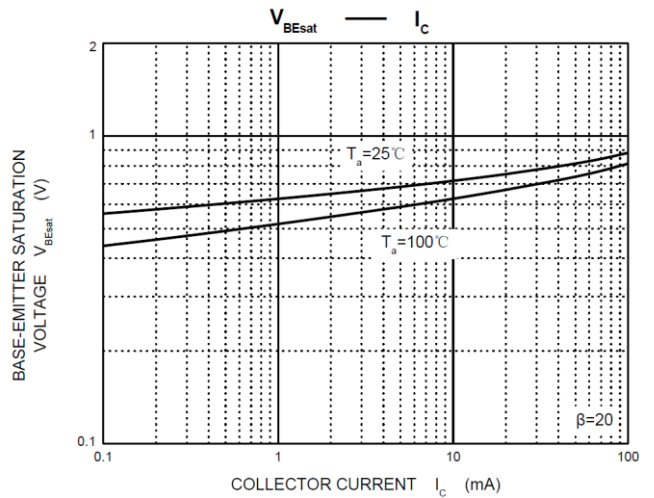
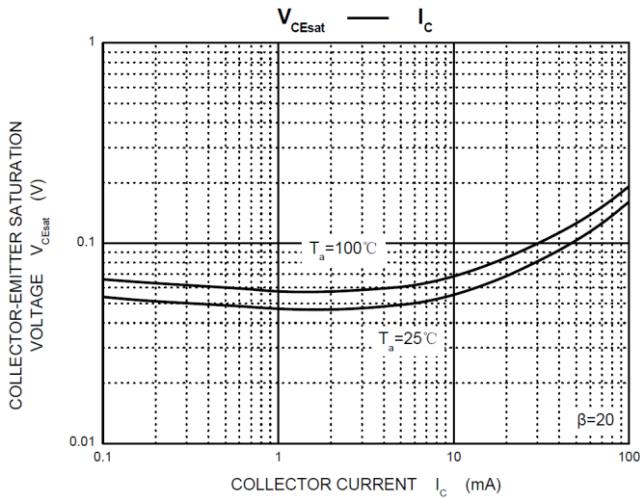
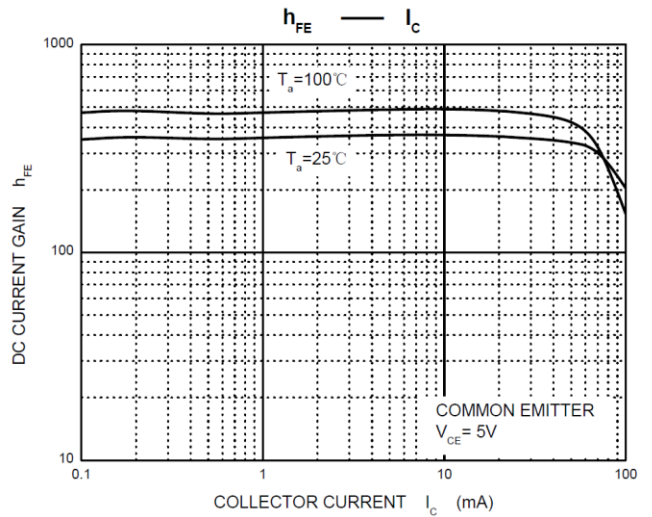
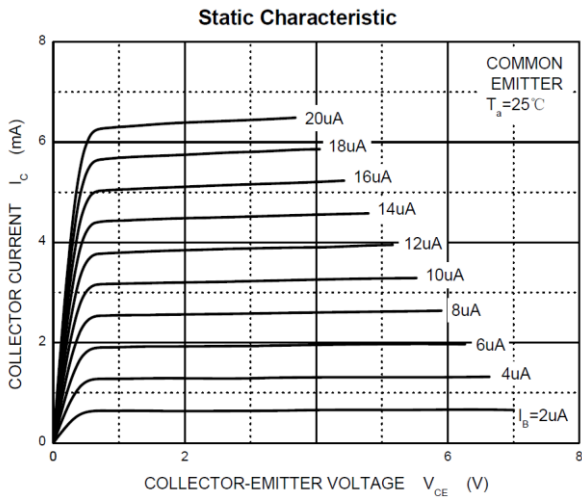
SUGGESTED REFLOW PROFILE (For Reference Only)



- Recommended peak temperature is over 245°C, If peak temperature is below 245 °C, you may adjust the following parameters; time length of peak temperature (longer), time length of soldering (longer), thickness of solder paste (thicker)
- Welding shall not exceed 2 times
- Remark: lead free solder paste (96.5 sn/3.0 Ag/0.5Cu)

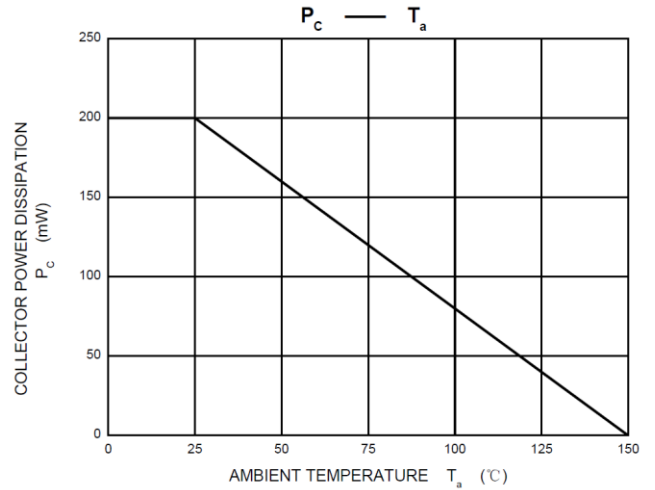
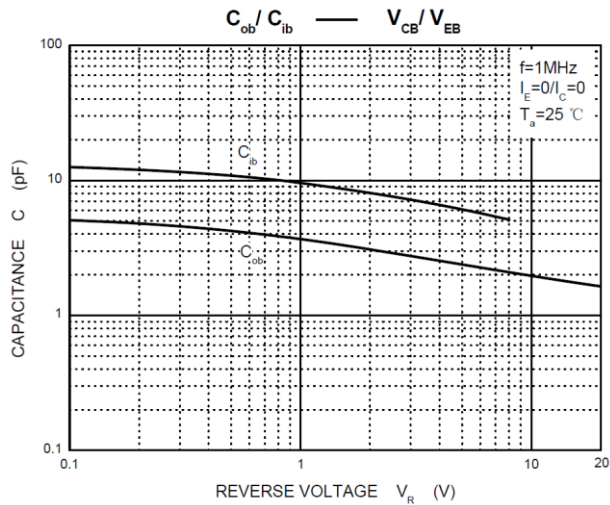
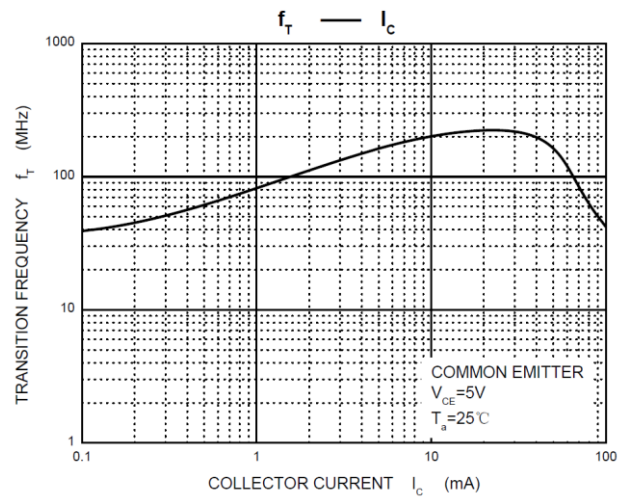
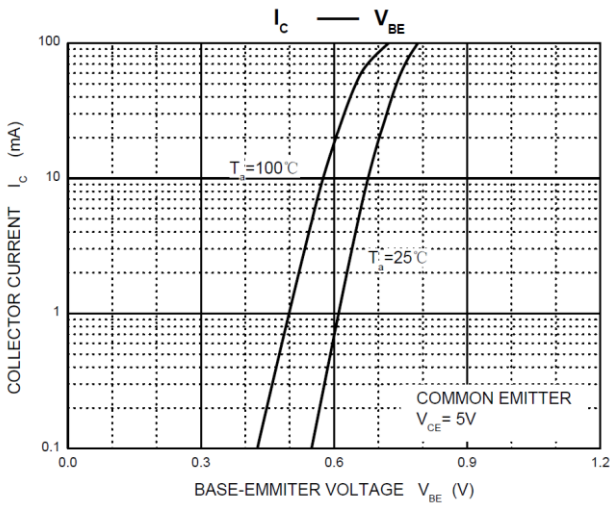
SMD PLASTIC-ENCAPULATE TRANSISTORS SOT23 SERIES

RATINGS AND CHARACTERISTIC CURVES (For Reference Only)



SMD PLASTIC-ENCCAPULATE TRANSISTORS SOT23 SERIES

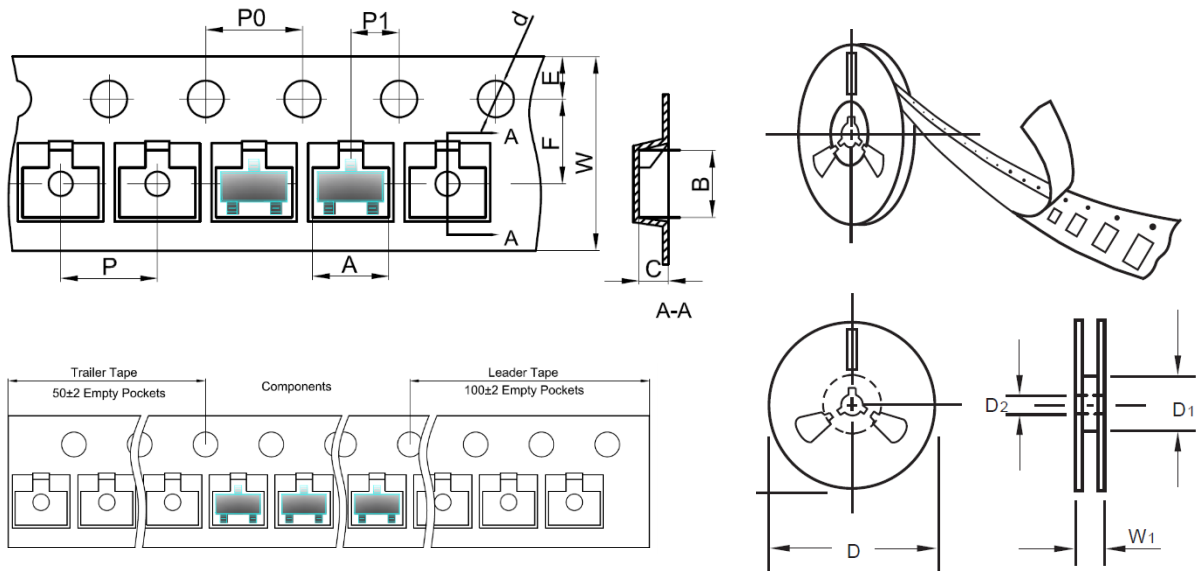
RATINGS AND CHARACTERISTIC CURVES (For Reference Only)



SMD PLASTIC-ENCAPULATE TRANSISTORS SOT23 SERIES

TAPE/REEL (Unit: mm)

All Devices are packed in accordance with EIA standard RS-481-A and specifications.



Item	Symbol	Tolerance	SOT-23
Carrier width	A	0.1	3.15
Carrier Length	B	0.1	2.77
Carrier Depth	C	0.1	1.22
Sprocket hole	d	0.05	1.55
7"Reel outside diameter	D	2.0	178.00
7"Reel inner diameter	D1	Min.	54.4
Feed hole diameter	D2	0.5	13.00
Sprocket hole position	E	0.1	1.75
Punch hole position	F	0.1	3.50
Punch hole pitch	P	0.1	4.00
Sprocket hole pitch	P0	0.1	4.00
Embossment center	P1	0.1	2.00
Overall tape thickness	T	0.1	0.25
Tape width	W	0.3	8.00
Reel width	W1	1.0	19.50

SMD PLASTIC-ENCAPULATE TRANSISTORS SOT23 SERIES

PACKAGE


Case Code	SOT-23
Reel Size	7"
Reel Size	178 mm
MPQ/Reel	3000 pcs
Qty. /Box	6000 pcs
G.W/Box	1 LBS

DISCLAIMER

NextGen Component, Inc. reserves the right to make changes to the product(s) and or information contained herein without notice. No liability is assumed as a result of their use or application. No rights under any patent accompany the sale of any such product(s) or information

Looking for pricing, stock, or lifecycle information?

Click below to explore more details on WIN SOURCE:

 [View S9014 on WIN SOURCE](#)

 [MDD Information](#)

Optimize Your Supply Chain with WIN SOURCE Solutions

-  Global Sourcing Solution
-  Obsolete Management
-  Cost Control Management
-  Shortage Management
-  Alternative Solution
-  Excess Inventory Management