



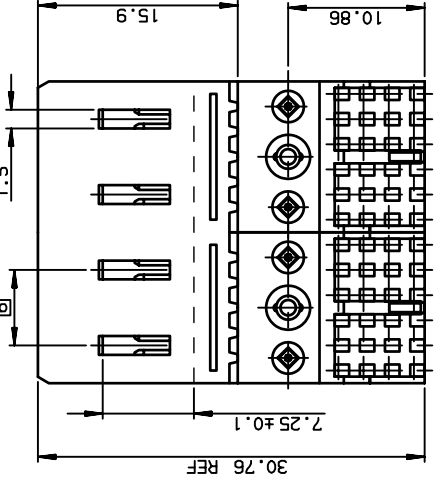
THE DATASHEET OF
85823-101



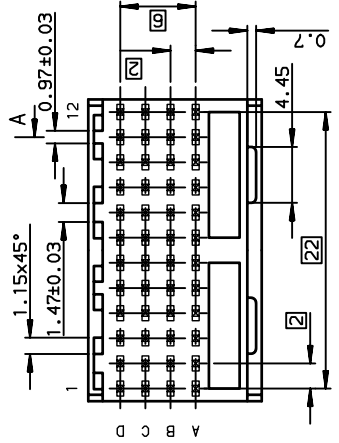
3

2

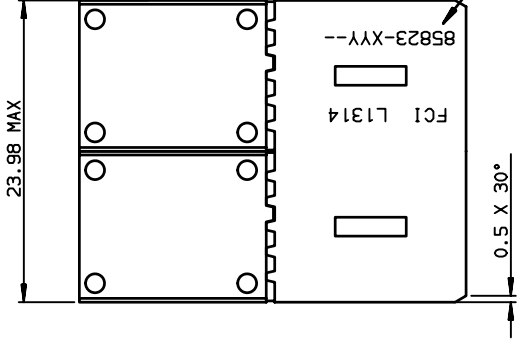
1



A



B



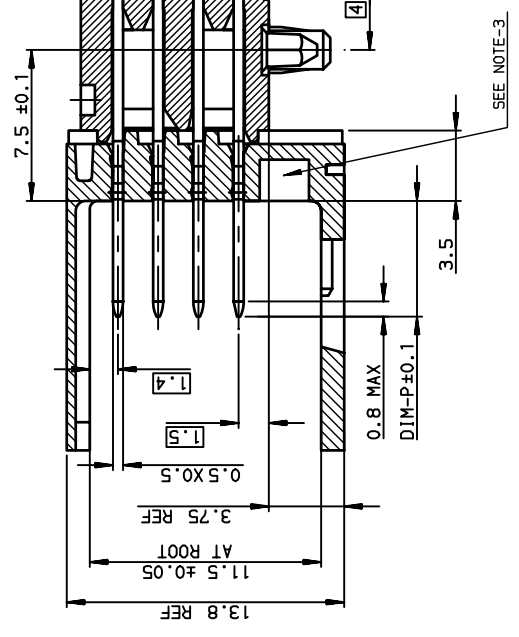
C

PART NUMBER	PERFORMANCE LEVEL
85823-1YY(LF)	STANDARD P/N, See Prod. Spec 65-12-446
85823-3YY(LF)	CUSTOMER SPECIAL , Specific Plating

GENERAL CHARACTERISTICS
SEE PRODUCT SPECIFICATION

NOTE-2: ONE CENTER
 NOTE-3: CODING RECEPTACLE
 NOTE-4: PRODUCT MARKING
 NOTE-5: PLATING ON CONTACT SURFACES
 NOTE-6: CENTRAL WALL THICKNESS
 NOTE-7: STANDARD PAINT
 IN P/N, PACKAGING AND LABELING
 Example: 85823-1YY(LF)

SECTION-A SCALE 4/1



Copyright FCI



OTHERS INFORMATION, SEE DRW 85823-2

www.fciconnect.com		surface ISO 1302		TOLERANCES UNLESS OTHERWISE SPECIFIED	
Dr	LENOIR	1991/04/21	ANGULAR	L INEAR	Product Family
Eng	LENOIR	1991/04/21	0.1X	± 2°	
Chr	LEGARE	1991/04/21			
Appr	LEGARE	1991/04/21			

rev	ecm no	dr	date
E	-	CHA	2003/07/02
F	L505-0056	MLE	2005/04/20
G	L506-0075	L60	2006/05/22
H	L506-0114	L60	2006/08/12
J	L507-0003	L60	2006/01/04
K	L507-0134	MLE	2007/05/14
L	L507-0143	MLE	2007/05/21



METRAL RA HDR STB CON
 NB 4x12 -2MODULES -FMLB LOAD
 catalog no

3

2

1

PDM: Rev:L

STATUS: R

Looking for pricing, stock, or lifecycle information?

Click below to explore more details on WIN SOURCE:

 [View 85823-101 on WIN SOURCE](#)

 [Amphenol FCI Information](#)

Optimize Your Supply Chain with WIN SOURCE Solutions

-  Global Sourcing Solution
-  Obsolete Management
-  Cost Control Management
-  Shortage Management
-  Alternative Solution
-  Excess Inventory Management