



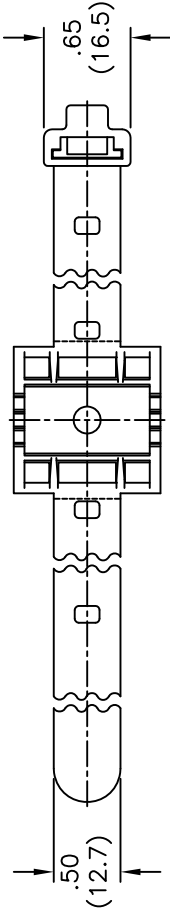
**THE DATASHEET OF
UMS-24-45**



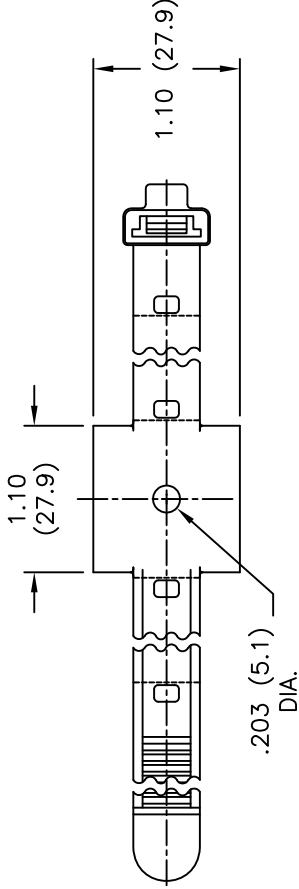
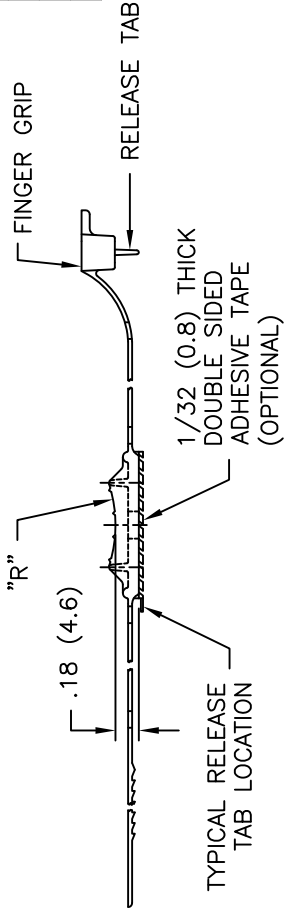
PART NO.

W/O TAPE	W/TAPE
UMS-16-45	UMS-16-45A-RT
UMS-24-45	UMS-24-45A-RT
UMS-32-45	UMS-32-45A-RT

B	
UMS-16-45	UMS-16-45A-RT
UMS-24-45	UMS-24-45A-RT
UMS-32-45	UMS-32-45A-RT



RICHCO RIVET NO.	F
SR5045	
SR5055	
SR5065	
SR5075	
SR5085	
SR5095	
SR5105	



NOTES:

1. MATERIAL: NYLON 6/6 (RMS-45).
2. COLOR: BLACK.
3. FOR MOUNTING USE SNAP RIVETS "SR-SERIES", #6 SCREW OR ACRYLIC ADHESIVE TAPE (RMS-15).

TITLE: UNIVERSAL MOUNTING STRAP



REV	DESCRIPTION	ENGR	DATE
D	SEE CO 200171 FOR CHANGES	SK	04.29.08
C	SEE ECN #551 FOR CHANGES	SM	01.07.03
B	CHANGED TAPE NOTE AND FILE NO.	SM	12.11.01
A	CHANGED RMS-73 TO RMS-45	JB	04.22.96

TOLERANCES UNLESS NOTED	FILE #	UMS
.XX=±.010	MAT'L:	SEE NOTES
.XXX=±.005	RE:	RICHCO, INC.
FRAC=±1/64		
ANG=±1°		

DWN: P.B.	APP:
DT: 01-18-95	IDT:
	RICHCO INC.
	PO BOX 804238, CHICAGO, 60688
	(773) 539-4060

Looking for pricing, stock, or lifecycle information?

Click below to explore more details on WIN SOURCE:

-  [View UMS-24-45 on WIN SOURCE](#)
-  [Essentra Components](#) Information

Optimize Your Supply Chain with WIN SOURCE Solutions

-  Global Sourcing Solution
-  Obsolete Management
-  Cost Control Management
-  Shortage Management
-  Alternative Solution
-  Excess Inventory Management