



**THE DATASHEET OF  
VLF5014ST-2R2M2R3**



# SMD Inductors(Coils) For Power Line(Wound, Magnetic Shielded)

Conformity to RoHS Directive

## VLF Series VLF5014S

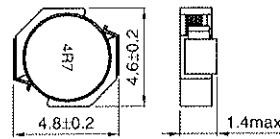
### FEATURES

- Miniature size  
Mount area: 4.6×4.8mm  
Low profile: 1.4mm max. height
- Generic use for portable DC to DC converter line.
- High magnetic shield construction should actualize high resolution for EMC protection.
- Available for automatic mounting in tape and reel package.
- The products contain no lead and also support lead-free soldering.
- It is a product conforming to RoHS directive.

### APPLICATIONS

Power source inductor for mobile devices such as mobile phones, HDDs, and DSCs

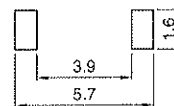
### SHAPES AND DIMENSIONS



Dimensions in mm



### RECOMMENDED PC BOARD PATTERN



Dimensions in mm

### ELECTRICAL CHARACTERISTICS

Part No.	Inductance (μH)	Inductance tolerance(%)	Test frequency (MHz)	DC resistance(Ω)		Rated current(A) <sup>*</sup>	
				max.	typ.	Based on inductance change max.	Based on temperature rise typ.
VLF5014ST-1R0N2R7	1	±30	1	0.05	0.041	4	2.7
VLF5014ST-2R2M2R3	2.2	±20	1	0.073	0.059	3	2.3
VLF5014ST-3R3M2R0	3.3	±20	1	0.1	0.077	2.3	2
VLF5014ST-4R7M1R7	4.7	±20	1	0.12	0.098	2	1.7
VLF5014ST-6R8M1R4	6.8	±20	1	0.2	0.16	1.6	1.4
VLF5014ST-100M1R2	10	±20	1	0.25	0.21	1.5	1.2

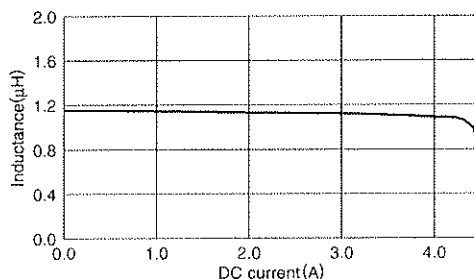
\* Rated current: Value obtained when current flows and the temperature has risen to 40°C or when DC current flows and the nominal value of inductance has fallen by 30%, whichever is smaller.

- Operating temperature range: -40 to +105°C (Including self-temperature rise)

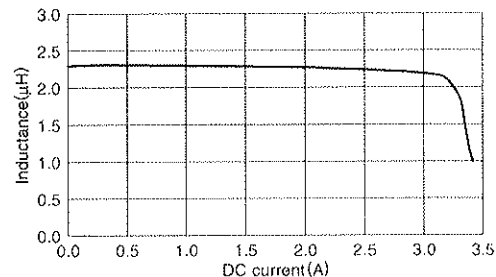
### TYPICAL ELECTRICAL CHARACTERISTICS

#### INDUCTANCE vs. DC SUPERPOSITION CHARACTERISTICS

##### VLF5014ST-1R0N2R7



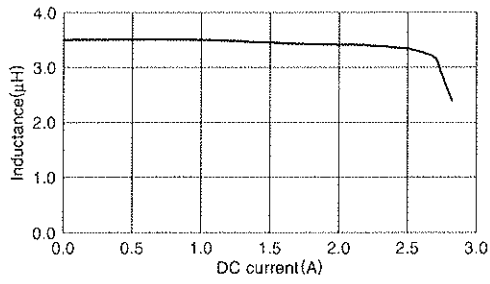
##### VLF5014ST-2R2M2R3



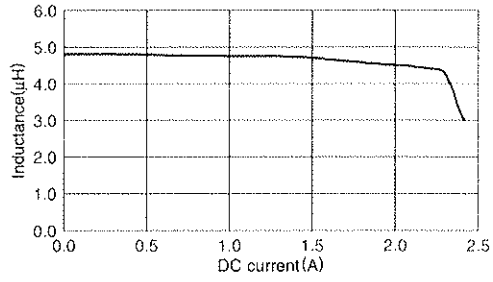
- Conformity to RoHS Directive: This means that, in conformity with EU Directive 2002/95/EC, lead, cadmium, mercury, hexavalent chromium, and specific bromine-based flame retardants, PBB and PBDE, have not been used, except for exempted applications.

- All specifications are subject to change without notice.

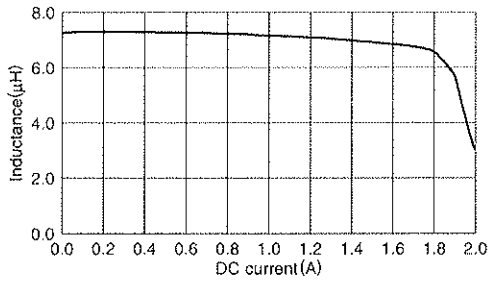
**TYPICAL ELECTRICAL CHARACTERISTICS**  
**INDUCTANCE vs. DC SUPERPOSITION CHARACTERISTICS**  
**VLF5014ST-3R3M2R0**



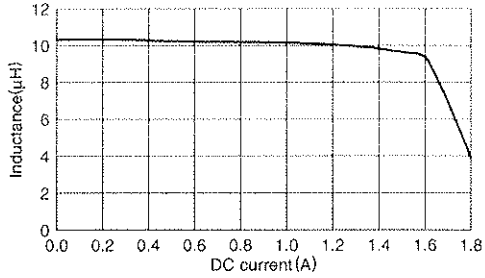
**VLF5014ST-4R7M1R7**



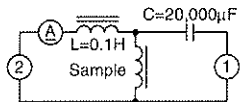
**VLF5014ST-6R8M1R4**



**VLF5014ST-100M1R2**



**TEST CIRCUIT**



- 1: LCR meter 4285A f=1MHz
- 2: DC constant current

## Looking for pricing, stock, or lifecycle information?

Click below to explore more details on WIN SOURCE:

 [View VLF5014ST-2R2M2R3 on WIN SOURCE](#)

 [TDK Corporation Information](#)

## Optimize Your Supply Chain with WIN SOURCE Solutions

-  Global Sourcing Solution
-  Obsolete Management
-  Cost Control Management
-  Shortage Management
-  Alternative Solution
-  Excess Inventory Management