



**THE DATASHEET OF
ZX3CD3S1M832TA**



ZX3CD3S1M832

MPPS™ Miniature Package Power Solutions 40V PNP LOW SATURATION TRANSISTOR AND 40V, 1A SCHOTTKY DIODE COMBINATION DUAL

SUMMARY

PNP Transistor — $V_{CE0} = -40V$; $R_{SAT} = 104m\Omega$; $I_C = -3A$

Schottky Diode — $V_R = 40V$; $V_F = 500mV (@1A)$; $I_C=1A$

DESCRIPTION

Packaged in the new innovative 3mm x 2mm MLP this combination dual comprises an ultra low saturation PNP transistor and a 1A Schottky barrier diode. This excellent combination provides users with highly efficient performance in applications including DC-DC and charging circuits.

Users will also gain several other **key benefits**:

Performance capability equivalent to much larger packages

Improved circuit efficiency & power levels

PCB area and device placement savings

Lower package height (0.9mm nom)

Reduced component count

FEATURES

- Extremely Low Saturation Voltage (-220mV @-1A)
- H_{FE} characterised up to -3A
- $I_C = -3A$ Continuous Collector Current
- **Extremely Low V_F , fast switching Schottky**
- 3mm x 2mm MLP

APPLICATIONS

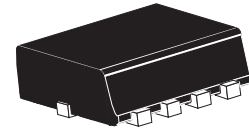
- DC - DC Converters
- Mobile Phones
- Charging Circuits
- Motor control

ORDERING INFORMATION

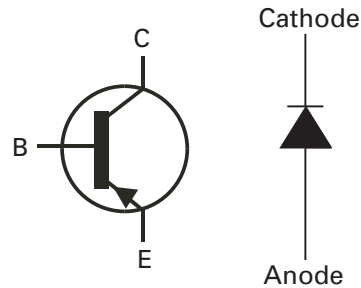
DEVICE	REEL	TAPE WIDTH	QUANTITY PER REEL
ZX3CD3S1M832TA	7''	8mm	3000
ZX3CD3S1M832TC	13''	8mm	10000

DEVICE MARKING

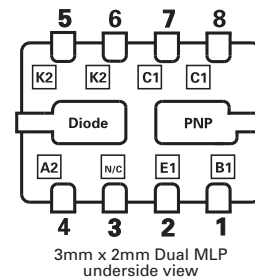
3S1



3mm x 2mm Dual Die MLP



PINOUT



3mm x 2mm Dual MLP
underside view

ZX3CD3S1M832

ABSOLUTE MAXIMUM RATINGS.

PARAMETER	SYMBOL	VALUE	UNIT
Transistor			
Collector-Base Voltage	V_{CBO}	-50	V
Collector-Emitter Voltage	V_{CEO}	-40	V
Emitter-Base Voltage	V_{EBO}	-7.5	V
Peak Pulse Current	I_{CM}	-4	A
Continuous Collector Current (a)(f)	I_C	-3	A
Base Current	I_B	1000	mA
Power Dissipation at $T_A=25^\circ\text{C}$ (a)(f) Linear Derating Factor	P_D	1.5 12	W mW/ $^\circ\text{C}$
Power Dissipation at $T_A=25^\circ\text{C}$ (b)(f) Linear Derating Factor	P_D	2.45 19.6	W mW/ $^\circ\text{C}$
Power Dissipation at $T_A=25^\circ\text{C}$ (c)(f) Linear Derating Factor	P_D	1 8	W mW/ $^\circ\text{C}$
Power Dissipation at $T_A=25^\circ\text{C}$ (d)(f) Linear Derating Factor	P_D	1.13 9	W mW/ $^\circ\text{C}$
Power Dissipation at $T_A=25^\circ\text{C}$ (d)(g) Linear Derating Factor	P_D	1.7 13.6	W mW/ $^\circ\text{C}$
Power Dissipation at $T_A=25^\circ\text{C}$ (e)(g) Linear Derating Factor	P_D	3 24	W mW/ $^\circ\text{C}$
Storage Temperature Range	T_{stg}	-55 to +150	$^\circ\text{C}$
Junction Temperature	T_j	150	$^\circ\text{C}$

THERMAL RESISTANCE

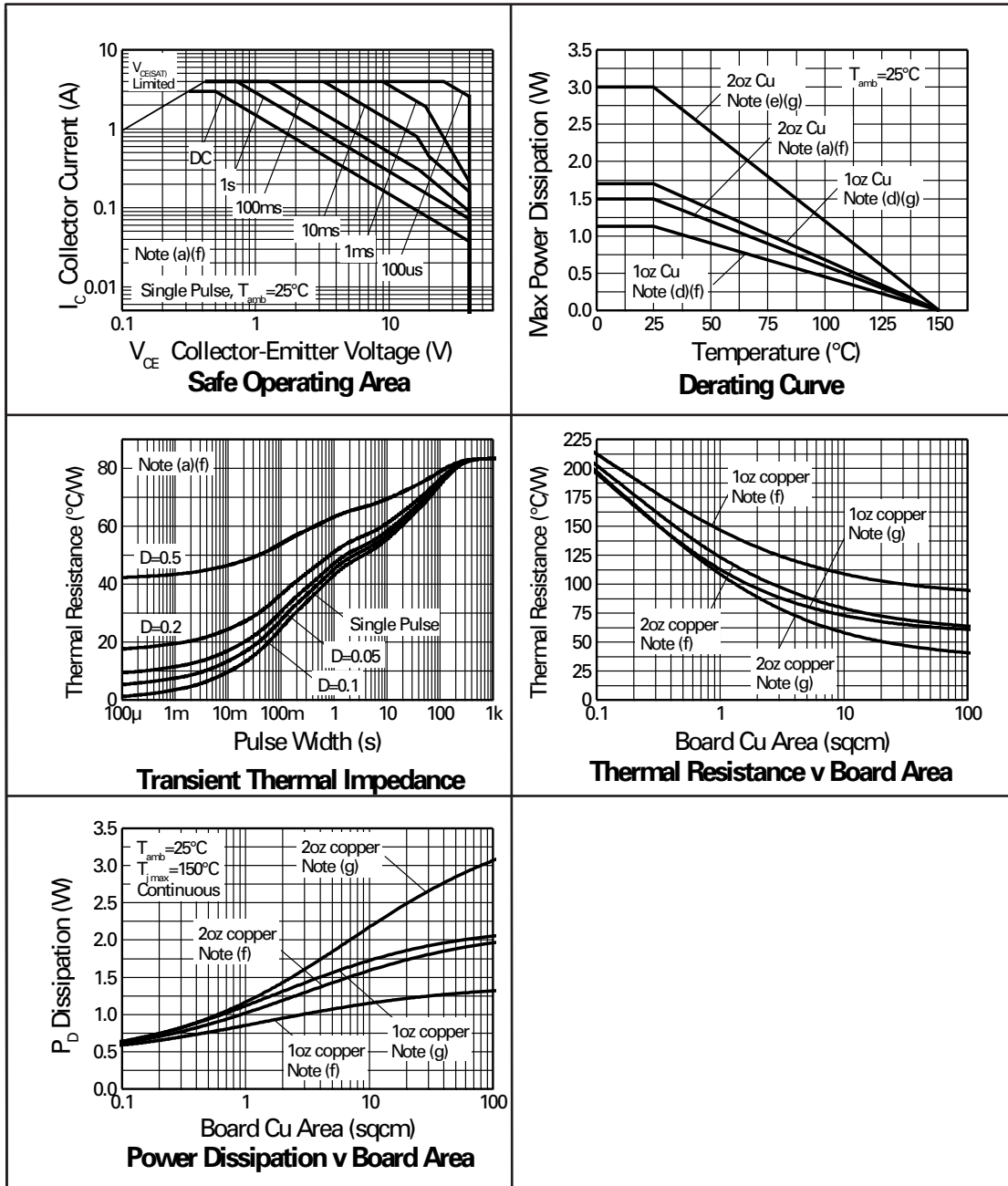
PARAMETER	SYMBOL	VALUE	UNIT
Junction to Ambient (a)(f)	$R_{\theta JA}$	83	$^\circ\text{C/W}$
Junction to Ambient (b)(f)	$R_{\theta JA}$	51	$^\circ\text{C/W}$
Junction to Ambient (c)(f)	$R_{\theta JA}$	125	$^\circ\text{C/W}$
Junction to Ambient (d)(f)	$R_{\theta JA}$	111	$^\circ\text{C/W}$
Junction to Ambient (d)(g)	$R_{\theta JA}$	73.5	$^\circ\text{C/W}$
Junction to Ambient (e)(g)	$R_{\theta JA}$	41.7	$^\circ\text{C/W}$

Notes

- (a) For a dual device surface mounted on 8 sq cm single sided 2oz copper on FR4 PCB, in still air conditions **with all exposed pads attached**. The copper area is split down the centre line into two separate areas with one half connected to each half of the dual device.
- (b) Measured at $t < 5$ secs for a dual device surface mounted on 8 sq cm single sided 2oz copper on FR4 PCB, in still air conditions **with all exposed pads attached**. The copper area is split down the centre line into two separate areas with one half connected to each half of the dual device.
- (c) For a dual device surface mounted on 8 sq cm single sided 2oz copper on FR4 PCB, in still air conditions **with minimal lead connections only**.
- (d) For a dual device surface mounted on 10 sq cm single sided 1oz copper on FR4 PCB, in still air conditions **with all exposed pads attached**. The copper area is split down the centre line into two separate areas with one half connected to each half of the dual device.
- (e) For a dual device surface mounted on 85 sq cm single sided 2oz copper on FR4 PCB, in still air conditions **with all exposed pads attached**. The copper area is split down the centre line into two separate areas with one half connected to each half of the dual device.
- (f) For a dual device with one active die.
- (g) For dual device with 2 active die running at equal power.
- (h) Repetitive rating - pulse width limited by max junction temperature. Refer to Transient Thermal Impedance graph.
- (i) The minimum copper dimensions required for mounting are no smaller than the exposed metal pads on the base of the device as shown in the package dimensions data. The thermal resistance for a dual device mounted on 1.5mm thick FR4 board using minimum copper 1 oz weight, 1mm wide tracks and one half of the device active is $R_{th} = 250^\circ\text{C/W}$ giving a power rating of $P_{tot} = 500\text{mW}$.

ZX3CD3S1M832

TRANSISTOR TYPICAL CHARACTERISTICS



ZX3CD3S1M832

ABSOLUTE MAXIMUM RATINGS.

PARAMETER	SYMBOL	VALUE	UNIT
Schottky Diode			
Continuous Reverse Voltage	V_R	40	V
Forward Voltage @ $I_F=1000\text{mA}(\text{typ})$	V_F	425	mV
Forward Current	I_F	1850	mA
Average Peak Forward Current $D=50\%$	I_{FAV}	3	A
Non Repetitive Forward Current $t \leq 100\mu\text{s}$ $t \leq 10\text{ms}$	I_{FSM}	12 7	A A
Power Dissipation at $T_A=25^\circ\text{C}$ (a)(f) Linear Derating Factor	P_D	1.2 12	W mW/ $^\circ\text{C}$
Power Dissipation at $T_A=25^\circ\text{C}$ (b)(f) Linear Derating Factor	P_D	2 20	W mW/ $^\circ\text{C}$
Power Dissipation at $T_A=25^\circ\text{C}$ (c)(f) Linear Derating Factor	P_D	0.8 8	W mW/ $^\circ\text{C}$
Power Dissipation at $T_A=25^\circ\text{C}$ (d)(f) Linear Derating Factor	P_D	0.9 9	W mW/ $^\circ\text{C}$
Power Dissipation at $T_A=25^\circ\text{C}$ (d)(g) Linear Derating Factor	P_D	1.36 13.6	W mW/ $^\circ\text{C}$
Power Dissipation at $T_A=25^\circ\text{C}$ (e)(g) Linear Derating Factor	P_D	2.4 24	W mW/ $^\circ\text{C}$
Storage Temperature Range	T_{stg}	-55 to +150	$^\circ\text{C}$
Junction Temperature	T_j	125	$^\circ\text{C}$

THERMAL RESISTANCE

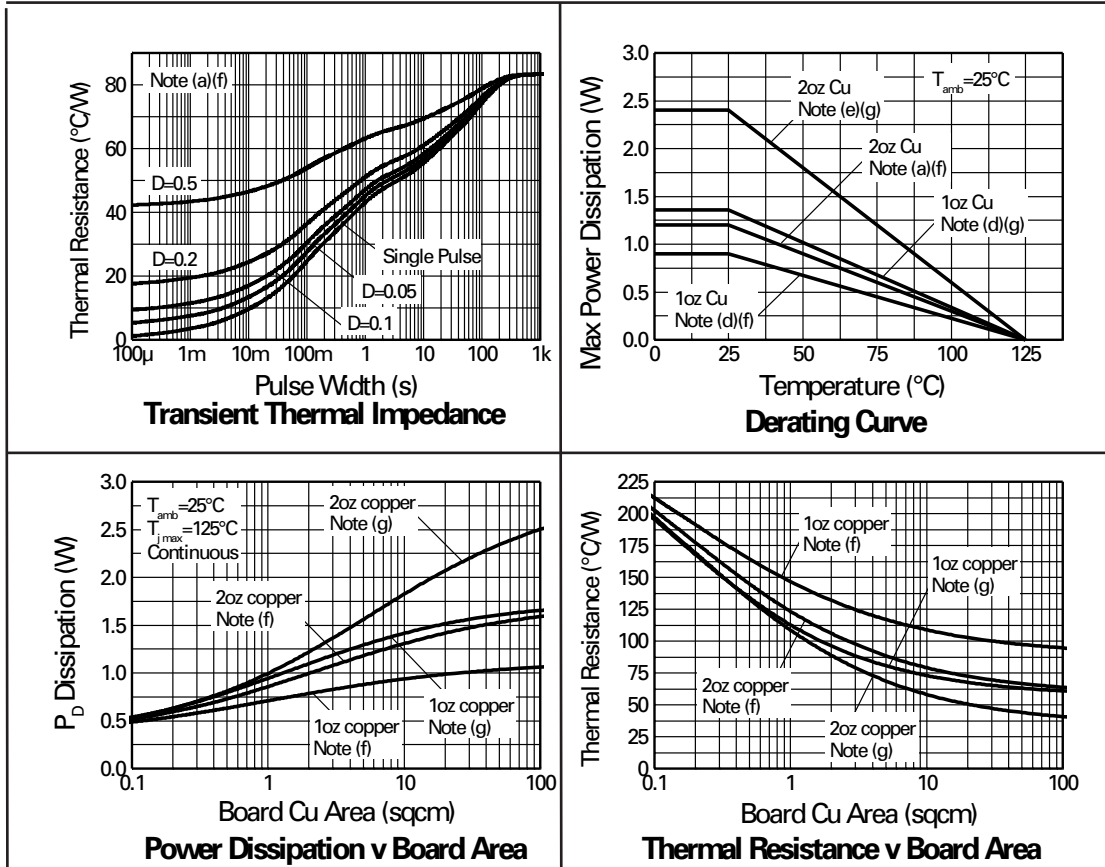
PARAMETER	SYMBOL	VALUE	UNIT
Junction to Ambient (a)(f)	$R_{\theta JA}$	83	$^\circ\text{C}/\text{W}$
Junction to Ambient (b)(f)	$R_{\theta JA}$	51	$^\circ\text{C}/\text{W}$
Junction to Ambient (c)(f)	$R_{\theta JA}$	125	$^\circ\text{C}/\text{W}$
Junction to Ambient (d)(f)	$R_{\theta JA}$	111	$^\circ\text{C}/\text{W}$
Junction to Ambient (d)(g)	$R_{\theta JA}$	73.5	$^\circ\text{C}/\text{W}$
Junction to Ambient (e)(g)	$R_{\theta JA}$	41.7	$^\circ\text{C}/\text{W}$

Notes

- (a) For a dual device surface mounted on 8 sq cm single sided 2oz copper on FR4 PCB, in still air conditions **with all exposed pads attached**. The copper area is split down the centre line into two separate areas with one half connected to each half of the dual device.
- (b) Measured at $t < 5$ secs for a dual device surface mounted on 8 sq cm single sided 2oz copper on FR4 PCB, in still air conditions **with all exposed pads attached**. The copper area is split down the centre line into two separate areas with one half connected to each half of the dual device.
- (c) For a dual device surface mounted on 8 sq cm single sided 2oz copper on FR4 PCB, in still air conditions **with minimal lead connections only**.
- (d) For a dual device surface mounted on 10 sq cm single sided 1oz copper on FR4 PCB, in still air conditions **with all exposed pads attached attached**. The copper area is split down the centre line into two separate areas with one half connected to each half of the dual device.
- (e) For a dual device surface mounted on 85 sq cm single sided 2oz copper on FR4 PCB, in still air conditions **with all exposed pads attached attached**. The copper area is split down the centre line into two separate areas with one half connected to each half of the dual device.
- (f) For a dual device with one active die.
- (g) For dual device with 2 active die running at equal power.
- (h) Repetitive rating - pulse width limited by max junction temperature. Refer to Transient Thermal Impedance graph.
- (i) The minimum copper dimensions required for mounting are no smaller than the exposed metal pads on the base of the device as shown in the package dimensions data. The thermal resistance for a dual device mounted on 1.5mm thick FR4 board using minimum copper 1 oz weight, 1mm wide tracks and one half of the device active is $R_{th} = 250^\circ\text{C}/\text{W}$ giving a power rating of $P_{tot} = 400\text{mW}$.

ZX3CD3S1M832

SCHOTTKY TYPICAL CHARACTERISTICS



ZX3CD3S1M832

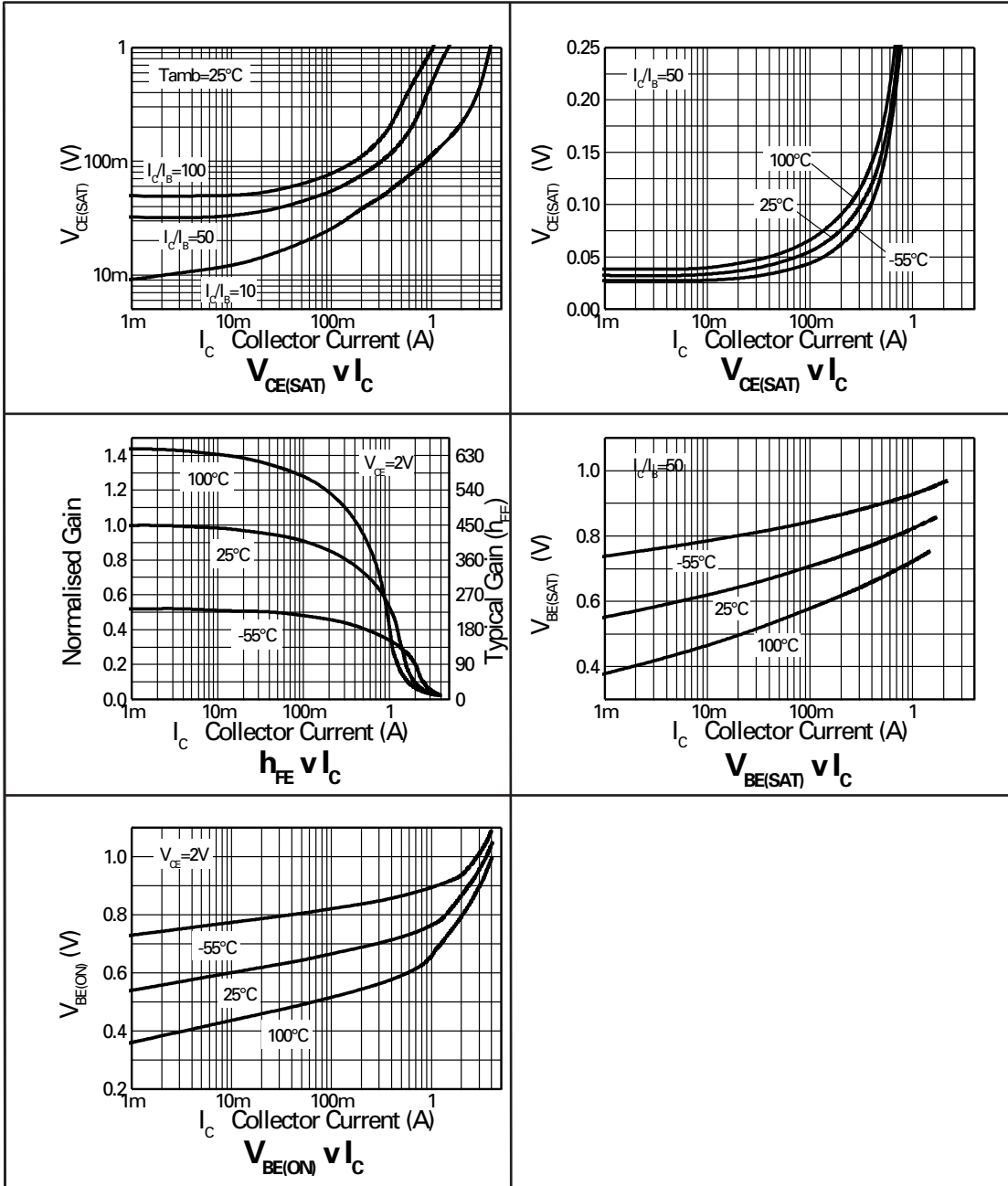
ELECTRICAL CHARACTERISTICS (at $T_{amb} = 25^{\circ}\text{C}$ unless otherwise stated).

PARAMETER	SYMBOL	MIN.	TYP.	MAX.	UNIT	CONDITIONS.
TRANSISTOR ELECTRICAL CHARACTERISTICS						
Collector-Base Breakdown Voltage	$V_{(BR)CBO}$	-50	-80		V	$I_C = -100\mu\text{A}$
Collector-Emitter Breakdown Voltage	$V_{(BR)CEO}$	-40	-70		V	$I_C = -10\text{mA}^*$
Emitter-Base Breakdown Voltage	$V_{(BR)EBO}$	-7.5	-8.5		V	$I_E = -100\mu\text{A}$
Collector Cut-Off Current	I_{CBO}			-25	nA	$V_{CB} = -40\text{V}$
Emitter Cut-Off Current	I_{EBO}			-25	nA	$V_{EB} = -6\text{V}$
Collector Emitter Cut-Off Current	I_{CES}			-25	nA	$V_{CES} = -32\text{V}$
Collector-Emitter Saturation Voltage	$V_{CE(sat)}$		-25	-40	mV	$I_C = -0.1\text{A}, I_B = -10\text{mA}^*$
			-150	-220	mV	$I_C = -1\text{A}, I_B = -50\text{mA}^*$
			-195	-300	mV	$I_C = -1.5\text{A}, I_B = -100\text{mA}^*$
			-210	-300	mV	$I_C = -2\text{A}, I_B = -200\text{mA}^*$
			-260	-370	mV	$I_C = -2.5\text{A}, I_B = -250\text{mA}^*$
Base-Emitter Saturation Voltage	$V_{BE(sat)}$		-0.97	-1.05	V	$I_C = -2.5\text{A}, I_B = -250\text{mA}^*$
Base-Emitter Turn-On Voltage	$V_{BE(on)}$		-0.89	-0.95	V	$I_C = -2.5\text{A}, V_{CE} = -2\text{V}^*$
Static Forward Current Transfer Ratio	h_{FE}	300	480			$I_C = -10\text{mA}, V_{CE} = -2\text{V}^*$
		300	450			$I_C = -0.1\text{A}, V_{CE} = -2\text{V}^*$
		180	290			$I_C = -1\text{A}, V_{CE} = -2\text{V}^*$
		60	130			$I_C = -1.5\text{A}, V_{CE} = -2\text{V}^*$
		12	22			$I_C = -3\text{A}, V_{CE} = -2\text{V}^*$
Transition Frequency	f_T	150	190		MHz	$I_C = -50\text{mA}, V_{CE} = -10\text{V}$ $f = 100\text{MHz}$
Output Capacitance	C_{obo}		19	25	pF	$V_{CB} = -10\text{V}, f = 1\text{MHz}$
Turn-On Time	$t_{(on)}$		40		ns	$V_{CC} = -15\text{V}, I_C = -0.75\text{A}$ $I_{B1} = I_{B2} = -15\text{mA}$
Turn-Off Time	$t_{(off)}$		435		ns	
SCHOTTKY DIODE ELECTRICAL CHARACTERISTICS						
Reverse Breakdown Voltage	$V_{(BR)R}$	40	60		V	$I_R = 300\mu\text{A}$
Forward Voltage	V_F		240	270	mV	$I_F = 50\text{mA}^*$
			265	290	mV	$I_F = 100\text{mA}^*$
			305	340	mV	$I_F = 250\text{mA}^*$
			355	400	mV	$I_F = 500\text{mA}^*$
			390	450	mV	$I_F = 750\text{mA}^*$
			425	500	mV	$I_F = 1000\text{mA}^*$
			495	600	mV	$I_F = 1500\text{mA}^*$
			420	—	mV	$I_F = 1000\text{mA}, T_a = 100^{\circ}\text{C}^*$
Reverse Current	I_R		50	100	μA	$V_R = 30\text{V}$
Diode Capacitance	C_D		25		pF	$f = 1\text{MHz}, V_R = 25\text{V}$
Reverse Recovery Time	t_{rr}		12		ns	switched from $I_F = 500\text{mA}$ to $I_R = 500\text{mA}$ Measured at $I_R = 50\text{mA}$

*Measured under pulsed conditions.

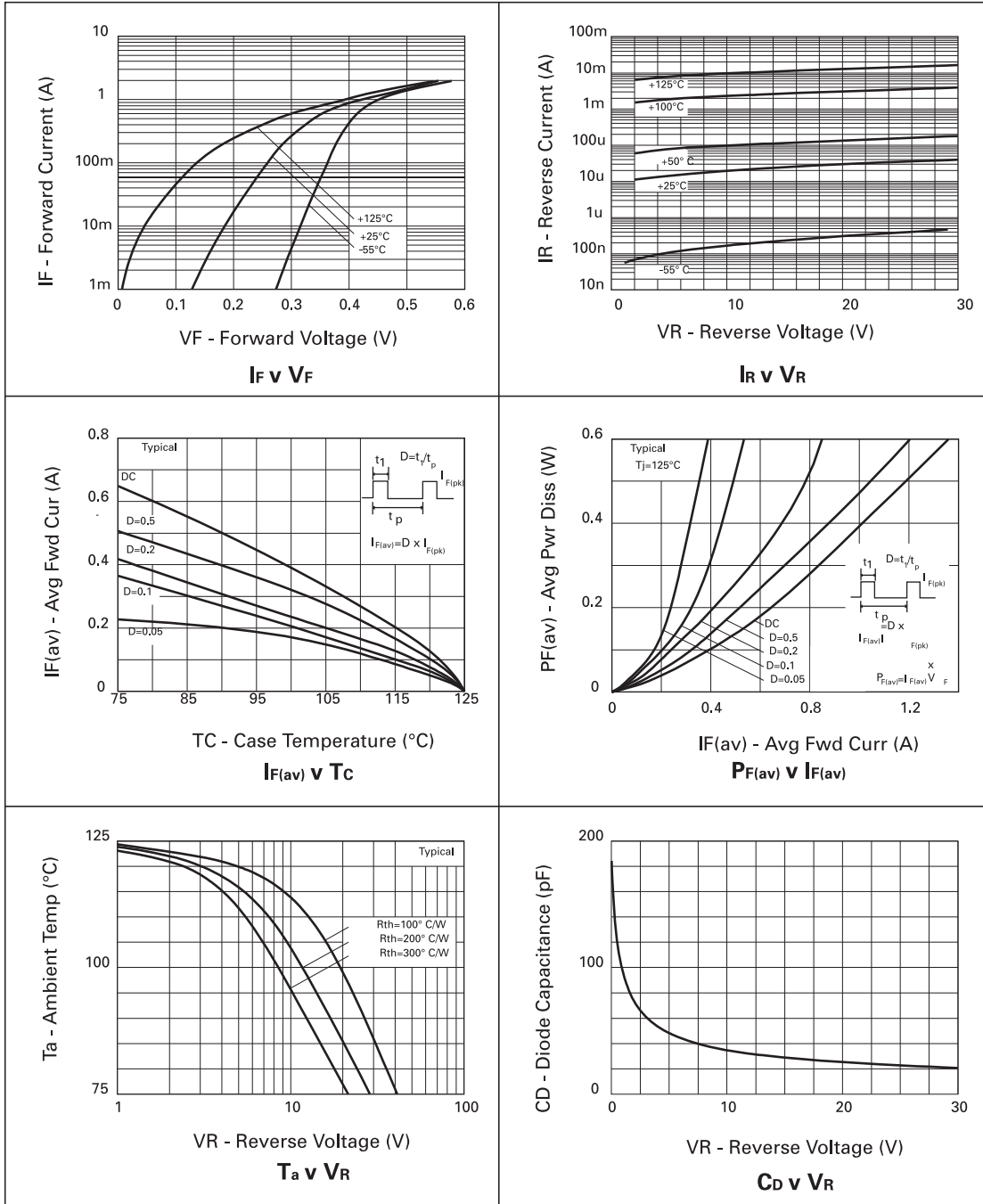
ZX3CD3S1M832

TRANSISTOR TYPICAL CHARACTERISTICS



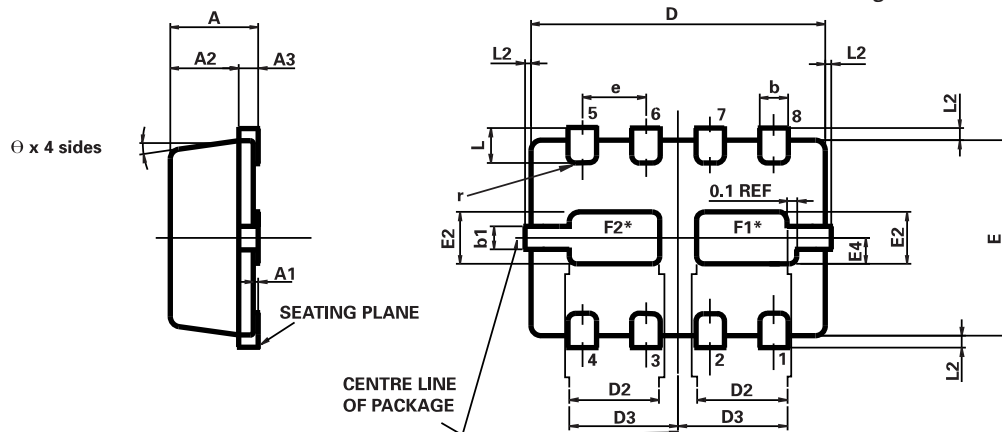
ZX3CD3S1M832

SCHOTTKY TYPICAL CHARACTERISTICS



ZX3CD3S1M832

MLP832 PACKAGE OUTLINE (3mm x 2mm Micro Leaded Package)



*Exposed Flags. Solder connection to improve thermal dissipation is optional.
 F1 at collector 1 potential
 F2 at collector 2 potential

CONTROLLING DIMENSIONS IN MILLIMETRES
 APPROX. CONVERTED DIMENSIONS IN INCHES

MLP832 PACKAGE DIMENSIONS

DIM	MILLIMETRES		INCHES		DIM	MILLIMETRES		INCHES	
	MIN.	MAX.	MIN.	MAX.		MIN.	MAX.	MIN.	MAX.
A	0.80	1.00	0.031	0.039	e	0.65 REF		0.0256 BSC	
A1	0.00	0.05	0.00	0.002	E	2.00 BSC		0.0787 BSC	
A2	0.65	0.75	0.0255	0.0295	E2	0.43	0.63	0.017	0.0249
A3	0.15	0.25	0.006	0.0098	E4	0.16	0.36	0.006	0.014
b	0.24	0.34	0.009	0.013	L	0.20	0.45	0.0078	0.0157
b1	0.17	0.30	0.0066	0.0118	L2	—	0.125	0.00	0.005
D	3.00 BSC		0.118 BSC		r	0.075 BSC		0.0029 BSC	
D2	0.82	1.02	0.032	0.040	Ø	0°	12°	0°	12°
D3	1.01	1.21	0.0397	0.0476					

© Zetex plc 2002

Europe

Zetex plc
 Fields New Road
 Chadderton
 Oldham, OL9 8NP
 United Kingdom
 Telephone (44) 161 622 4422
 Fax: (44) 161 622 4420
 uksales@zetex.com

Zetex GmbH
 Streitfeldstraße 19
 D-81673 München
 Germany
 Telefon: (49) 89 45 49 49 0
 Fax: (49) 89 45 49 49 49
 europe.sales@zetex.com

Americas

Zetex Inc
 700 Veterans Memorial Hwy
 Hauppauge, NY11788
 USA
 Telephone: (631) 360 2222
 Fax: (631) 360 8222
 usa.sales@zetex.com

Asia Pacific

Zetex (Asia) Ltd
 3701-04 Metroplaza, Tower 1
 Hing Fong Road
 Kwai Fong
 Hong Kong
 Telephone: (852) 26100 611
 Fax: (852) 24250 494
 asia.sales@zetex.com

These offices are supported by agents and distributors in major countries world-wide.

This publication is issued to provide outline information only which (unless agreed by the Company in writing) may not be used, applied or reproduced for any purpose or form part of any order or contract or be regarded as a representation relating to the products or services concerned. The Company reserves the right to alter without notice the specification, design, price or conditions of supply of any product or service.

For the latest product information, log on to www.zetex.com

Looking for pricing, stock, or lifecycle information?

Click below to explore more details on WIN SOURCE:

- ⊖ [View ZX3CD3S1M832TA on WIN SOURCE](#)
- ⊖ [Diodes Incorporated Information](#)

Optimize Your Supply Chain with WIN SOURCE Solutions

- ✓ Global Sourcing Solution
- ✓ Obsolete Management
- ✓ Cost Control Management
- ✓ Shortage Management
- ✓ Alternative Solution
- ✓ Excess Inventory Management