

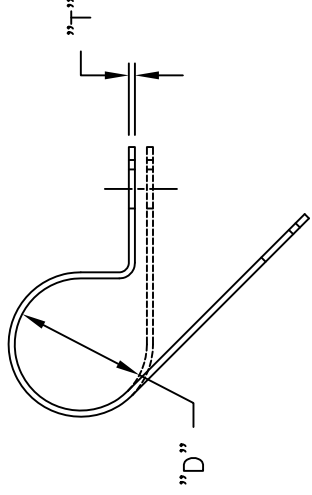
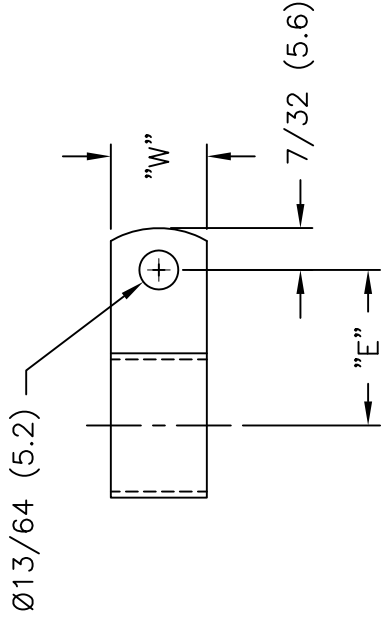


# THE DATASHEET OF AL2A



PART NO.	HOLDING DIA. "D"
AL2A	1/8 (3.2)
AL3A	3/16 (4.8)
AL4A	1/4 (6.4)
AL5A	5/16 (7.9)
AL6A	3/8 (9.5)
AL7A	7/16 (11.1)
AL8A	1/2 (12.7)
AL9A	9/16 (14.3)
AL10A	5/8 (15.9)
AL11	11/16 (17.5)
AL12	3/4 (19.1)
AL14	7/8 (22.2)
*AL15	15/16 (23.8)
AL16	1 (25.4)
AL18	1-1/8 (28.6)
AL20	1-1/4 (31.8)

\*PARTS AVAILABLE BY S



NOTES:

- MAT'L: ALUMINUM ALLOY 5052 H-32 (RMS-199)

TITLE: CABLE CLAMPS, ALUMINUM

REV	DESCRIPTION	ENGR	DATE	TOLERANCES UNLESS NOTED .XX=±.010 .XXX=±.005 FRAC=±1/64 ANG=±1°	FILE # AL	DWN: P.B.	APP:
E	SEE CO 200508 FOR CHANGES	SK	03.11.10		MAT'L: SEE NOTES	DT: 01-18-95	DT:
D	SEE CO 200432 FOR CHANGES	SK	09.08.09		RE: RICHCO, INC.		RICHCO INC.
C	SEE ECN #927 FOR CHANGES	SK	01.31.05				PO BOX 804238, CHICAGO, 60680
B	DRAWING UPDATED AND CHANGED FILE NO.	SM	09.26.01				(773) 539-4060
A	CONVERTED TO ACAD	PB	01.18.95				

## Looking for pricing, stock, or lifecycle information?

Click below to explore more details on WIN SOURCE:

- ⊖ [View AL2A on WIN SOURCE](#)
- ⊖ [Essentra Components](#) Information

## Optimize Your Supply Chain with WIN SOURCE Solutions

- ✓ Global Sourcing Solution
- ✓ Obsolete Management
- ✓ Cost Control Management
- ✓ Shortage Management
- ✓ Alternative Solution
- ✓ Excess Inventory Management