



**THE DATASHEET OF  
BAS70DW-06-TP**





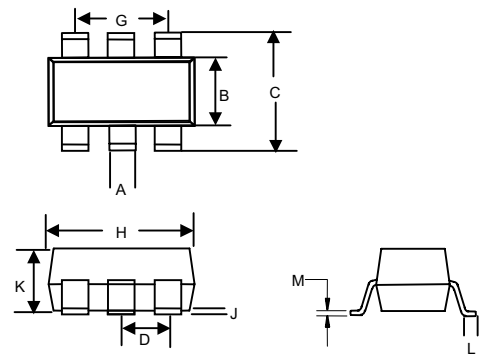
**BAS70TW /DW-04 /  
 DW-05 /DW-06 /BRW**

**Features**

- Fast Switching
- Low Forward Voltage Drop
- Low Power Dissipation
- Ultra-Small Surface Mount Package
- Epoxy meets UL 94 V-0 flammability rating
- Moisture Sensitivity Level 1
- Lead Free Finish/Rohs Compliant ("P" Suffix designates RoHS Compliant. See ordering information)
- Halogen free available upon request by adding suffix "-HF"

**200mW  
 SCHOTTKY BARRIER  
 Diode**

**SOT-363**



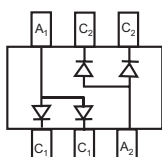
**Maximum Ratings**

| Symbol                          | Rating   | Rating      | Unit          |
|---------------------------------|--|-------------|---------------|
| $V_{RRM}$<br>$V_{RWM}$<br>$V_R$ | Peak Repetitive Reverse Voltage<br>Working Peak Reverse Voltage<br>DC Blocking Voltage | 70          | V             |
| $I_F$                           | Forward Continuous Current   | 70          | mA            |
| $I_{FSM}$                       | Peak Forward Surge Current @ <1.0s   | 100         | mA            |
| $R_{\theta JA}$                 | Thermal Resistance Junction to Ambient   | 625         | $^{\circ}C/W$ |
| $P_D$                           | Power dissipation  | 200         | mW            |
| $T_{STG \& T_J}$                | Storage & Operating Junction Temperature   | -55 to +125 | $^{\circ}C$   |

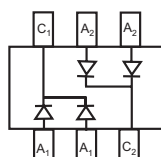
**Electrical Characteristics @ 25°C Unless Otherwise Specified**

| Symbol   | Parameter                       | Min | Max           | Test Conditions                              |
|----------|---------------------------------|-----|---------------|--|
| $I_R$    | Reverse Voltage Leakage Current | --- | 100nA         | $V_R=50V$                                    |
| $V_F$    | Forward Voltage                 | --- | 0.41V<br>1.0V | $I_F=1mA$<br>$I_F=15mA$                      |
| $C_T$    | Total Capacitance               | --- | 2pF           | $V_R=0V, f=1MHz$                             |
| $t_{rr}$ | Reverse Recovery Time           | --- | 5.0ns         | $I_F=I_R=10mA, I_{rr}=0.1I_R, R_L=100\Omega$ |

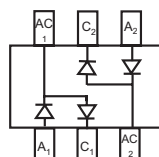
| DIM | DIMENSIONS |      |             |      | NOTE |
|-----|------------|------|-------------|------|------|
|     | INCHES     |      | MM          |      |      |
|     | MIN        | MAX  | MIN         | MAX  |      |
| A   | .006       | .014 | 0.15        | 0.35 |      |
| B   | .045       | .053 | 1.15        | 1.35 |      |
| C   | .085       | .096 | 2.15        | 2.45 |      |
| D   | .026       |      | 0.65Nominal |      |      |
| G   | .047       | .055 | 1.20        | 1.40 |      |
| H   | .071       | .087 | 1.80        | 2.20 |      |
| J   | ---        | .004 | ---         | 0.10 |      |
| K   | .035       | .043 | 0.90        | 1.10 |      |
| L   | .010       | .018 | 0.26        | 0.46 |      |
| M   | .003       | .006 | 0.08        | 0.15 |      |



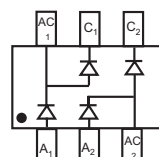
BAS70DW-06  
 Marking: K76



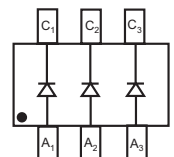
BAS70DW-05  
 Marking: K71



BAS70DW-04  
 Marking: K74



BAS70BRW  
 Marking: K75



BAS70TW  
 Marking: K73

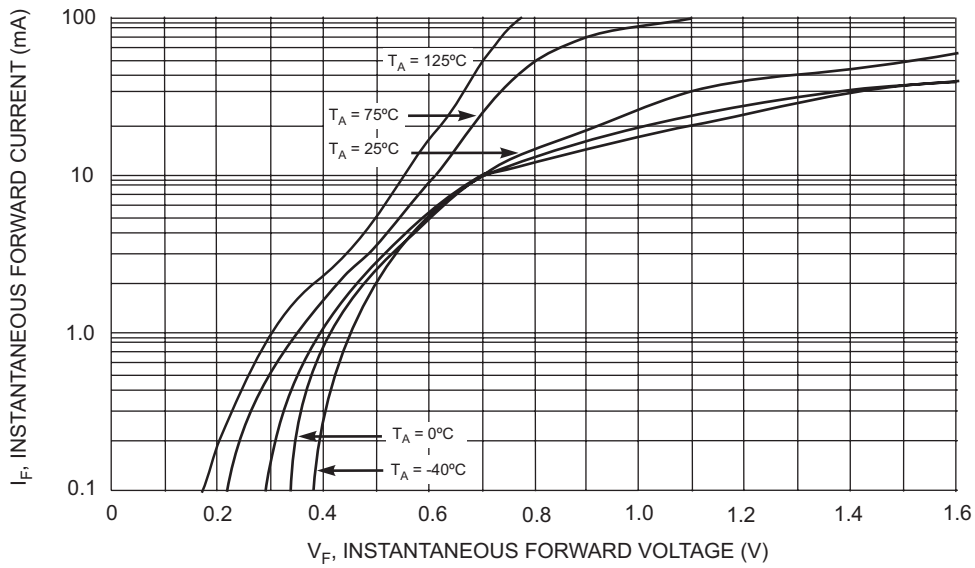


Fig. 1 Typical Forward Characteristics

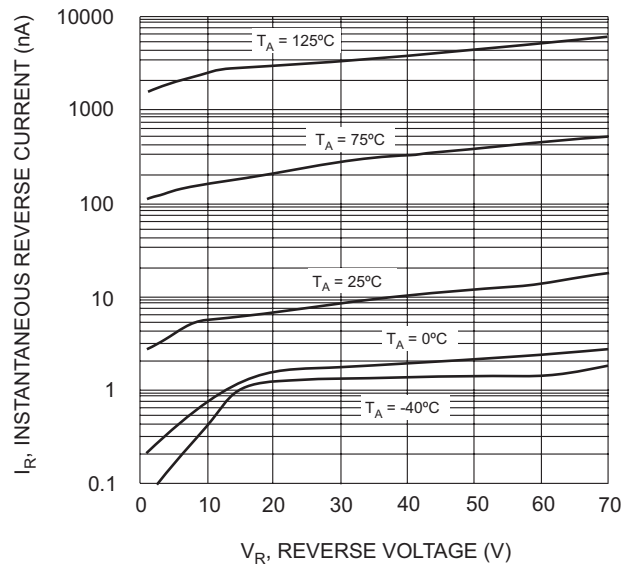


Fig. 2 Typical Reverse Characteristics

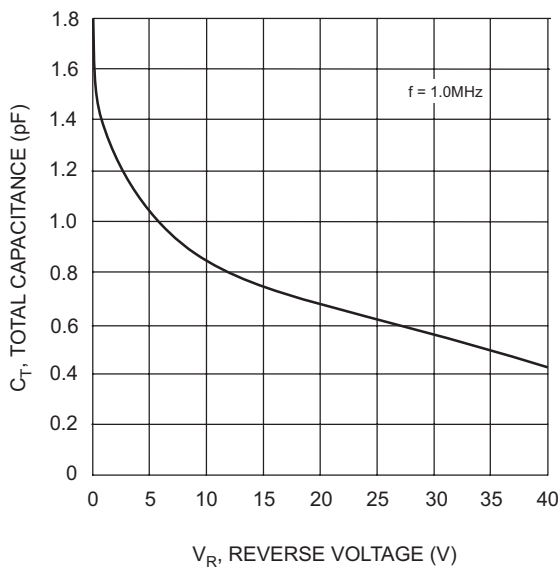


Fig. 3 Typical Capacitance

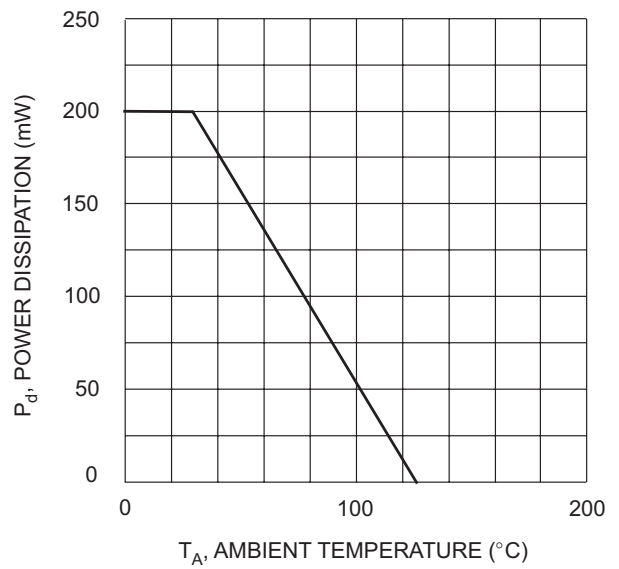


Fig. 4 Power Derating Curve, Total Package



TM

Micro Commercial Components

### Ordering Information :

| Device         | Packing               |
|----------------|-----------------------|
| Part Number-TP | Tape&Reel: 3Kpcs/Reel |

Note : Adding "-HF" suffix for halogen free, eg. Part Number-TP-HF

#### \*\*\*IMPORTANT NOTICE\*\*\*

**Micro Commercial Components Corp.** reserves the right to make changes without further notice to any product herein to make corrections, modifications , enhancements , improvements , or other changes . **Micro Commercial Components Corp .** does not assume any liability arising out of the application or use of any product described herein; neither does it convey any license under its patent rights ,nor the rights of others . The user of products in such applications shall assume all risks of such use and will agree to hold **Micro Commercial Components Corp .** and all the companies whose products are represented on our website, harmless against all damages.

#### \*\*\*LIFE SUPPORT\*\*\*

MCC's products are not authorized for use as critical components in life support devices or systems without the express written approval of Micro Commercial Components Corporation.

#### \*\*\*CUSTOMER AWARENESS\*\*\*

Counterfeiting of semiconductor parts is a growing problem in the industry. Micro Commercial Components (MCC) is taking strong measures to protect ourselves and our customers from the proliferation of counterfeit parts. MCC strongly encourages customers to purchase MCC parts either directly from MCC or from Authorized MCC Distributors who are listed by country on our web page cited below. Products customers buy either from MCC directly or from Authorized MCC Distributors are genuine parts, have full traceability, meet MCC's quality standards for handling and storage. **MCC will not provide any warranty coverage or other assistance for parts bought from Unauthorized Sources.** MCC is committed to combat this global problem and encourage our customers to do their part in stopping this practice by buying direct or from authorized distributors.

[www.mccsemi.com](http://www.mccsemi.com)

## Looking for pricing, stock, or lifecycle information?

Click below to explore more details on WIN SOURCE:

-  [View BAS70DW-06-TP](#) on WIN SOURCE
-  [Micro Commercial Co](#) Information

## Optimize Your Supply Chain with WIN SOURCE Solutions

-  Global Sourcing Solution
-  Obsolete Management
-  Cost Control Management
-  Shortage Management
-  Alternative Solution
-  Excess Inventory Management