

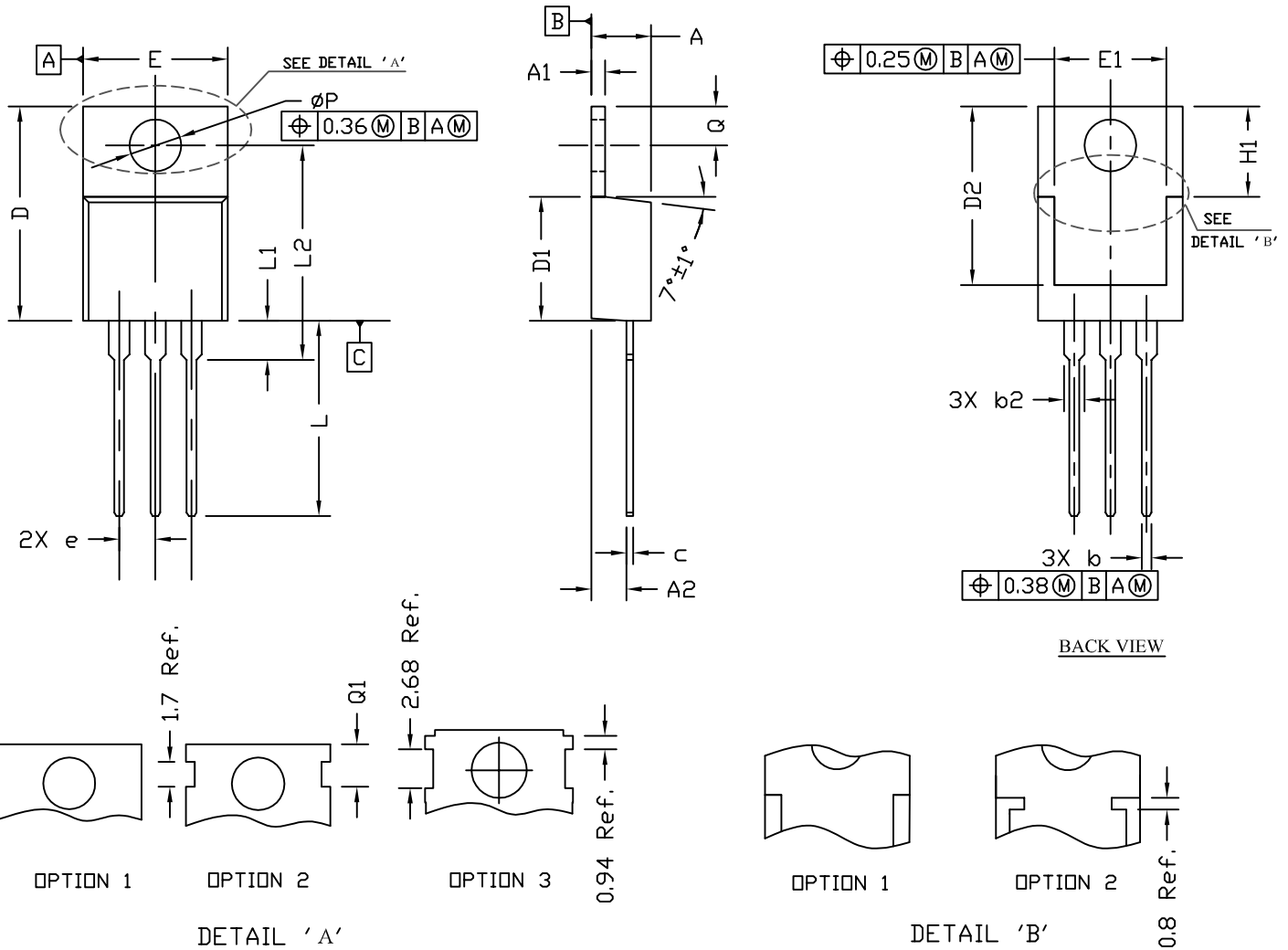


**THE DATASHEET OF
AOT2N60**

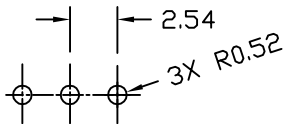




TO220 PACKAGE OUTLINE



RECOMMENDATION OF HOLE PATTERN



UNIT: mm

- NOTE
1. PACKAGE BODY SIZES EXCLUDE MOLD FLASH AND GATE BURRS. MOLD FLASH SHOULD BE LESS THAN 6 MIL.
 2. TOLERANCE 0.100 MILLIMETERS UNLESS OTHERWISE SPECIFIED.
 3. CONTROLLING DIMENSION IS MILLIMETER.
- CONVERTED INCH DIMENSIONS ARE NOT NECESSARILY EXACT.

SYMBOLS	DIMENSIONS IN MILLIMETERS			DIMENSIONS IN INCHES		
	MIN	NOM	MAX	MIN	NOM	MAX
A	4.30	4.45	4.72	0.169	0.175	0.186
A1	1.15	1.27	1.40	0.045	0.050	0.055
A2	2.20	2.67	2.90	0.087	0.105	0.114
b	0.69	0.81	0.95	0.027	0.032	0.037
b2	1.17	1.37	1.45	0.046	0.050	0.068
c	0.36	0.38	0.60	0.014	0.015	0.024
D	14.50	15.44	15.80	0.571	0.608	0.622
D1	8.59	9.14	9.65	0.338	0.360	0.380
D2	11.43	11.73	12.48	0.450	0.462	0.491
e	2.54 BSC			0.100 BSC		
E	9.66	10.03	10.54	0.380	0.395	0.415
E1	6.22	---	---	0.245	---	---
H1	6.10	6.30	6.50	0.240	0.248	0.256
L	12.27	12.82	14.27	0.483	0.505	0.562
L1	2.47	---	3.90	0.097	---	0.154
L2	---	---	16.70	---	---	0.657
Q	2.59	2.74	2.89	0.102	0.108	0.114
ϕP	3.50	3.84	3.89	0.138	0.151	0.153
Q1	2.70	---	2.90	0.106	---	0.114

Looking for pricing, stock, or lifecycle information?

Click below to explore more details on WIN SOURCE:

- ⊖ [View AOT2N60 on WIN SOURCE](#)
- ⊖ [Alpha & Omega Semiconductor Inc. Information](#)

Optimize Your Supply Chain with WIN SOURCE Solutions

- ✓ Global Sourcing Solution
- ✓ Obsolete Management
- ✓ Cost Control Management
- ✓ Shortage Management
- ✓ Alternative Solution
- ✓ Excess Inventory Management