

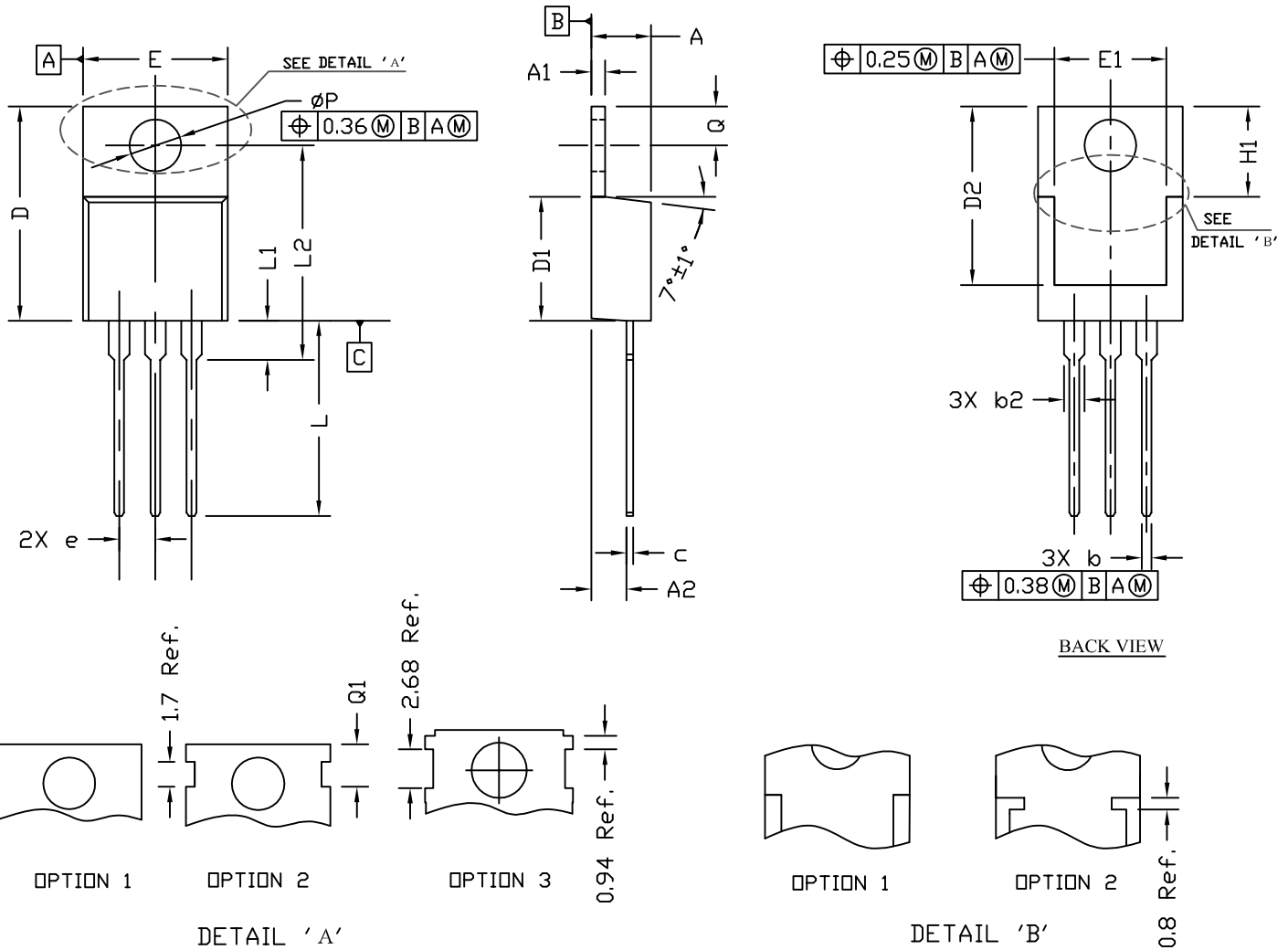


**THE DATASHEET OF  
AOT3N60**

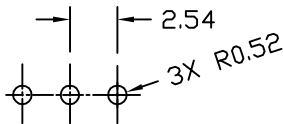




TO220 PACKAGE OUTLINE



RECOMMENDATION OF HOLE PATTERN



UNIT: mm

NOTE

1. PACKAGE BODY SIZES EXCLUDE MOLD FLASH AND GATE BURRS. MOLD FLASH SHOULD BE LESS THAN 6 MIL.
2. TOLERANCE 0.100 MILLIMETERS UNLESS OTHERWISE SPECIFIED.
3. CONTROLLING DIMENSION IS MILLIMETER. CONVERTED INCH DIMENSIONS ARE NOT NECESSARILY EXACT.

| SYMBOLS  | DIMENSIONS IN MILLIMETERS |       |       | DIMENSIONS IN INCHES |       |       |
|----------|---------------------------|-------|-------|----------------------|-------|-------|
|          | MIN                       | NOM   | MAX   | MIN                  | NOM   | MAX   |
| A        | 4.30                      | 4.45  | 4.72  | 0.169                | 0.175 | 0.186 |
| A1       | 1.15                      | 1.27  | 1.40  | 0.045                | 0.050 | 0.055 |
| A2       | 2.20                      | 2.67  | 2.90  | 0.087                | 0.105 | 0.114 |
| b        | 0.69                      | 0.81  | 0.95  | 0.027                | 0.032 | 0.037 |
| b2       | 1.17                      | 1.37  | 1.45  | 0.046                | 0.050 | 0.068 |
| c        | 0.36                      | 0.38  | 0.60  | 0.014                | 0.015 | 0.024 |
| D        | 14.50                     | 15.44 | 15.80 | 0.571                | 0.608 | 0.622 |
| D1       | 8.59                      | 9.14  | 9.65  | 0.338                | 0.360 | 0.380 |
| D2       | 11.43                     | 11.73 | 12.48 | 0.450                | 0.462 | 0.491 |
| e        | 2.54 BSC                  |       |       | 0.100 BSC            |       |       |
| E        | 9.66                      | 10.03 | 10.54 | 0.380                | 0.395 | 0.415 |
| E1       | 6.22                      | ---   | ---   | 0.245                | ---   | ---   |
| H1       | 6.10                      | 6.30  | 6.50  | 0.240                | 0.248 | 0.256 |
| L        | 12.27                     | 12.82 | 14.27 | 0.483                | 0.505 | 0.562 |
| L1       | 2.47                      | ---   | 3.90  | 0.097                | ---   | 0.154 |
| L2       | ---                       | ---   | 16.70 | ---                  | ---   | 0.657 |
| Q        | 2.59                      | 2.74  | 2.89  | 0.102                | 0.108 | 0.114 |
| $\phi P$ | 3.50                      | 3.84  | 3.89  | 0.138                | 0.151 | 0.153 |
| Q1       | 2.70                      | ---   | 2.90  | 0.106                | ---   | 0.114 |

## Looking for pricing, stock, or lifecycle information?

Click below to explore more details on WIN SOURCE:

- ⊖ [View AOT3N60 on WIN SOURCE](#)
- ⊖ [Alpha & Omega Semiconductor Inc. Information](#)

## Optimize Your Supply Chain with WIN SOURCE Solutions

- ✓ Global Sourcing Solution
- ✓ Obsolete Management
- ✓ Cost Control Management
- ✓ Shortage Management
- ✓ Alternative Solution
- ✓ Excess Inventory Management