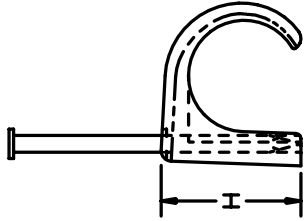
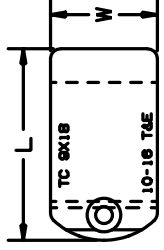
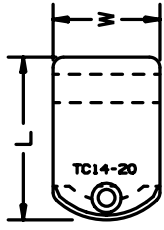




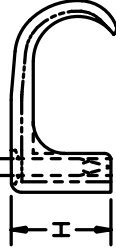
**THE DATASHEET OF
TC10-14-C100**



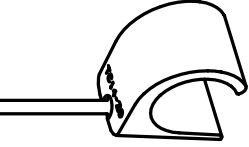
THIS COPY IS PROVIDED ON A RESTRICTED BASIS AND IS NOT TO BE USED IN ANY WAY DETRIMENTAL TO THE INTERESTS



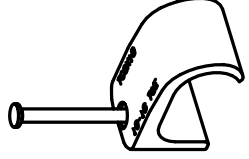
SINGLE



DOUBLE



FULL SCALE
TC14-20



FULL SCALE
TC9X18

PANDUIT PART NO.	T Y P E	CABLE DIA. in./.(mm)	DIMENSIONS - in./.(mm)		
			H	L	W
TC3-5	S	0.13 (3.3)	0.20 (5.1)	0.29 (7.4)	0.23 (5.8)
TC4-6	S				
TC5-7	S	0.21 (5.3)	0.31 (7.9)	0.39 (9.9)	0.23 (5.8)
TC7-10	S	0.27 (6.9)	0.38 (9.7)	0.48 (12.5)	0.35 (8.8)
TC10-14	S	0.35 (8.9)	0.51 (13.0)	0.59 (14.9)	0.45 (11.4)
TC14-20	S	0.52 (13.2)	0.67 (17.0)	0.78 (20.6)	0.54 (13.7)
TC3X5	D				
TC4X6	D				
TC5X8	D	0.20 X 0.31 (5.1) (7.9)	0.30 (7.6)	0.54 (13.7)	0.27 (6.9)
TC6X9	D				
TC6X10	D	0.23 X 0.38 (5.8) (9.7)	0.34 (8.6)	0.62 (15.7)	0.34 (8.6)
TC7X14	D	0.25 X 0.46 (6.4) (11.7)	0.36 (9.1)	0.70 (17.8)	0.43 (11.0)
TC8X15	D				
TC9X18	D	0.37 X 0.65 (9.4) (16.5)	0.50 (12.7)	0.69 (22.6)	0.52 (13.2)

NOTES:

1. SEE CURRENT PRICE SHEET FOR PART NUMBER DESIGNATION FOR PACKAGE SIZE AND PART DESIGNATION FOR WEATHER RESISTANT POLYPROPYLENE CLIP; WEATHER RESISTANT POLYPROPYLENE CLIP; ZINC PLATED, HARDENED STEEL
2. NAIL: ZINC PLATED, HARDENED STEEL

(DIMENSIONS IN PARENTHESIS ARE IN MILLIMETERS)
CAD FILES: \VIEWS 600239JQ_PB.TA



TACK C

UNLESS OTHERWISE SPECIFIED,
DIMENSIONAL TOLERANCES ARE:
(.X) ± 0.1 (2.5) (.XXX) ± 0.050 (1.27)
(.XX) ± 0.05 (1.27) ANGLES ± 5°

DRAWN BY LGG MAT'Ls

DATE 9/4/02
CHK'D

SEE NOTE 2

REV	DATE	BY	CHK	DESCRIPTION	ECN	R	CUST	SUP
R	9-4-02	LGG		INITIAL RELEASE. REPLACE G-02269	680239JQ	R		

Looking for pricing, stock, or lifecycle information?

Click below to explore more details on WIN SOURCE:

 [View TC10-14-C100 on WIN SOURCE](#)

 [Panduit Corp Information](#)

Optimize Your Supply Chain with WIN SOURCE Solutions

-  Global Sourcing Solution
-  Obsolete Management
-  Cost Control Management
-  Shortage Management
-  Alternative Solution
-  Excess Inventory Management