



**THE DATASHEET OF  
VLS252015T-1R0N1R7**



# SMD Inductors(Coils) For Power Line(Wound, Magnetic Shielded)

Conformity to RoHS Directive

## VLS Series VLS252015

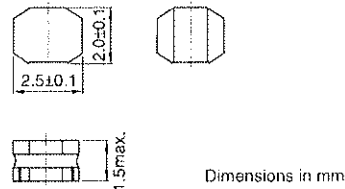
### FEATURES

- Miniature size  
Mount area: 2.5×2mm  
Height: 1.5mm max.
- Generic use for portable DC to DC converter line.
- High magnetic shield construction should actualize high resolution for EMC protection.
- Available for automatic mounting in tape and reel package.
- The products do not contain lead and support lead-free soldering.

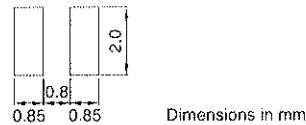
### APPLICATIONS

DVCs, DSCs, PDAs, LCD displays, cellular phones, HDDs, etc.

### SHAPES AND DIMENSIONS



### RECOMMENDED PC BOARD PATTERN



### ELECTRICAL CHARACTERISTICS

Part No.	Inductance ( $\mu\text{H}$ )	Inductance tolerance (%)	Test frequency (MHz)	DC resistance ( $\Omega$ )		Rated current(A)* Based on inductance change		Based on temperature rise typ.
				max.	typ.	max.	typ.	
				VLS252015T-1R0N1R7	1	$\pm 30$	1	
VLS252015T-1R5N1R4	1.5	$\pm 30$	1	0.12	0.1	1.9	2.18	1.4
VLS252015T-2R2M1R2	2.2	$\pm 20$	1	0.16	0.133	1.7	1.9	1.2
VLS252015T-3R3M1R0	3.3	$\pm 20$	1	0.218	0.182	1.4	1.57	1
VLS252015T-4R7MR89	4.7	$\pm 20$	1	0.318	0.265	1.2	1.35	0.89
VLS252015T-6R8MR73	6.8	$\pm 20$	1	0.48	0.4	1	1.13	0.73
VLS252015T-100MR66	10	$\pm 20$	1	0.588	0.49	0.82	0.93	0.66

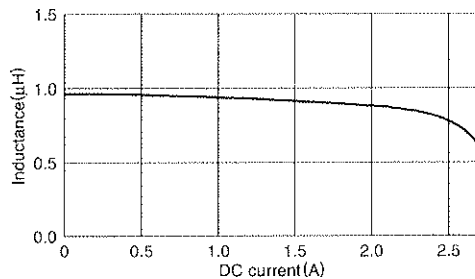
\* Rated current: Value obtained when current flows and the temperature has risen to 40°C or when DC current flows and the nominal value of inductance has fallen by 30%, whichever is smaller.

- Operating temperature range: -40 to +105°C (Including self-temperature rise)

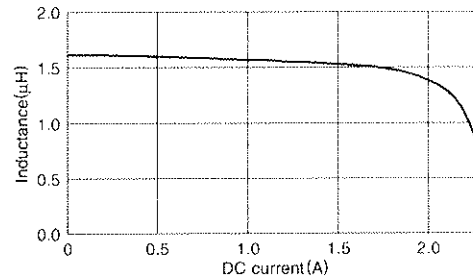
### TYPICAL ELECTRICAL CHARACTERISTICS

#### INDUCTANCE vs. DC SUPERPOSITION CHARACTERISTICS

##### VLS252015T-1R0N1R7



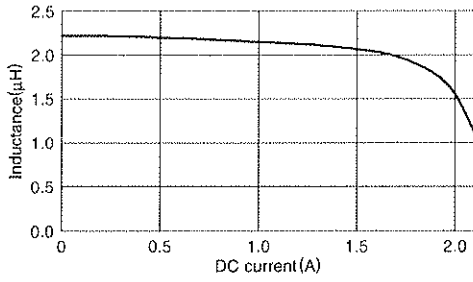
##### VLS252015T-1R5N1R4



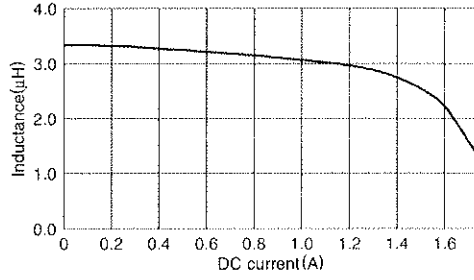
- Conformity to RoHS Directive: This means that, in conformity with EU Directive 2002/95/EC, lead, cadmium, mercury, hexavalent chromium, and specific bromine-based flame retardants, PBB and PBDE, have not been used, except for exempted applications.

- All specifications are subject to change without notice.

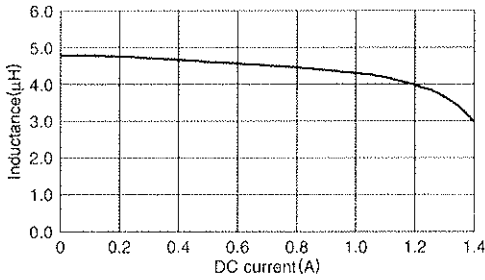
**TYPICAL ELECTRICAL CHARACTERISTICS**  
**INDUCTANCE vs. DC SUPERPOSITION CHARACTERISTICS**  
**VLS252015T-2R2M1R2**



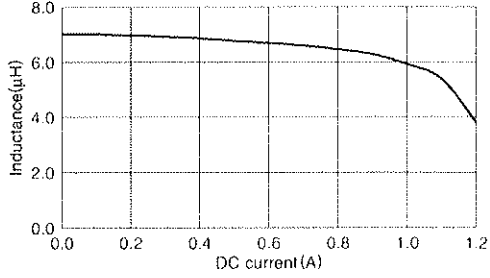
**VLS252015T-3R3M1R0**



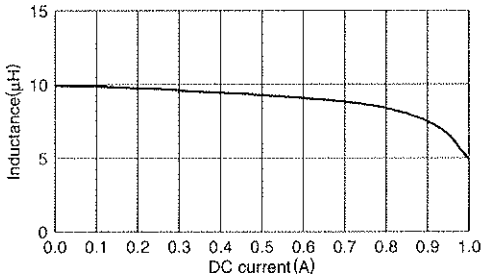
**VLS252015T-4R7MR89**



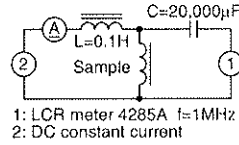
**VLS252015T-6R8MR73**



**VLS252015T-100MR66**



**TEST CIRCUIT**



• All specifications are subject to change without notice.

## Looking for pricing, stock, or lifecycle information?

Click below to explore more details on WIN SOURCE:

 [View VLS252015T-1R0N1R7 on WIN SOURCE](#)

 [TDK Corporation](#) Information

## Optimize Your Supply Chain with WIN SOURCE Solutions

-  Global Sourcing Solution
-  Obsolete Management
-  Cost Control Management
-  Shortage Management
-  Alternative Solution
-  Excess Inventory Management