



THE DATASHEET OF CFRB204-G

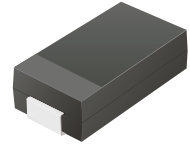


CFRB201-G Thru. CFRB207-G

Reverse Voltage: 50 to 1000 Volts

Forward Current: 2.0 Amp

RoHS Device

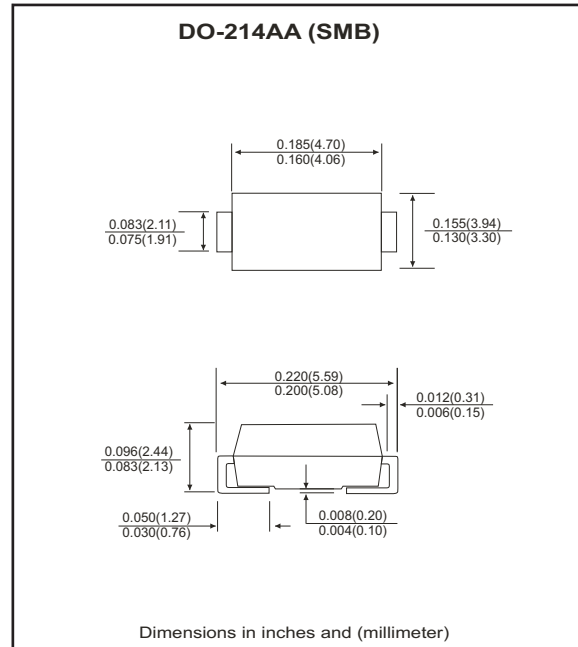


Features

- Ideal for surface mount applications.
- Easy pick and place.
- Plastic package has Underwriters Lab. flammability classification 94V-0.
- Fast recovery time: 150~500nS.
- Low leakage current.

Mechanical data

- Case: JEDEC DO-214AA, molded plastic.
- Terminals: solderable per MIL-STD-750, method 2026.
- Polarity: Color band denotes cathode end.
- Approx. weight: 0.093 grams



Maximum Ratings and Electrical Characteristics

| Parameter | Symbol | CFRB 201-G | CFRB 202-G | CFRB 203-G | CFRB 204-G | CFRB 205-G | CFRB 206-G | CFRB 207-G | Units |
|--|-----------------|-------------|------------|------------|------------|------------|---------------|------------|-------------|
| Max. repetitive peak reverse voltage | V_{RRM} | 50 | 100 | 200 | 400 | 600 | 800 | 1000 | V |
| Max. DC blocking voltage | V_{DC} | 50 | 100 | 200 | 400 | 600 | 800 | 1000 | V |
| Max. RMS voltage | V_{RMS} | 35 | 70 | 140 | 280 | 420 | 560 | 700 | V |
| Peak surge forward current, 8.3ms single half sine-wave superimposed on rate load (JEDEC method) | I_{FSM} | 50 | | | | | | | A |
| Max. average forward current | I_o | 2.0 | | | | | | | A |
| Max. instantaneous forward voltage at 2.0A | V_F | 1.3 | | | | | | | V |
| Reverse recovery time | T_{rr} | 150 | | | | 250 | 500 | | nS |
| Max. DC reverse current at $T_A=25^{\circ}C$ rated DC blocking voltage $T_A=125^{\circ}C$ | I_R | 5.0 | | | | | 50 | | μA |
| Max. thermal resistance (Note 1) | $R_{\theta JL}$ | 20 | | | | | $^{\circ}C/W$ | | |
| Max. operating junction temperature | T_J | 150 | | | | | | | $^{\circ}C$ |
| Storage temperature | T_{STG} | -55 to +150 | | | | | | | $^{\circ}C$ |

Notes: 1. Thermal resistance from junction to lead mounted on P.C.B. with 8.0x8.0 mm square² (0.13mm thick) land area.

RATING AND CHARACTERISTIC CURVES (CFRB201-G thru CFRB207-G)

Fig.1 Reverse Characteristics

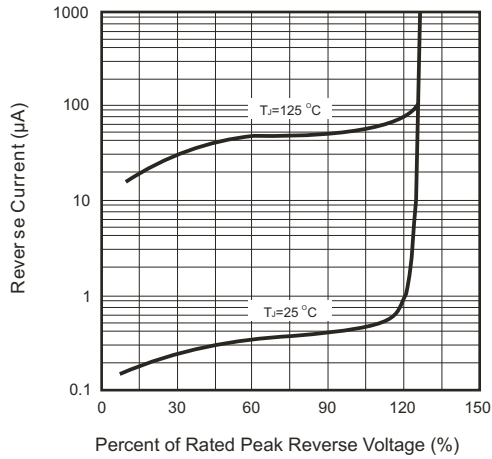


Fig.2 Forward Characteristics

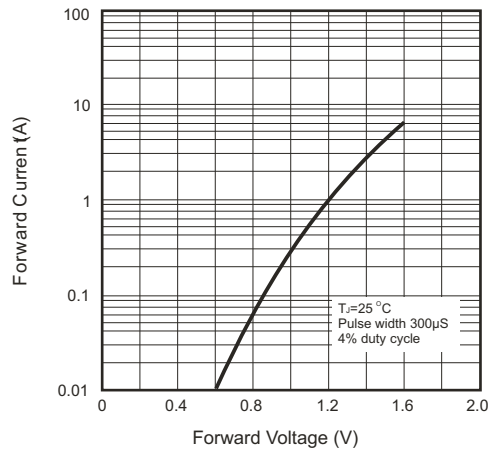


Fig.3 Junction Capacitance

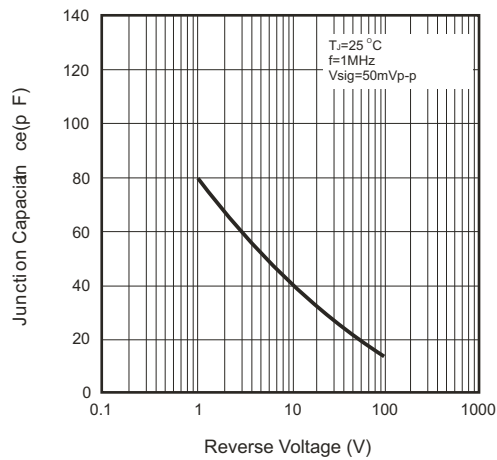


Fig.4 Non-repetitive Forward Surge Current

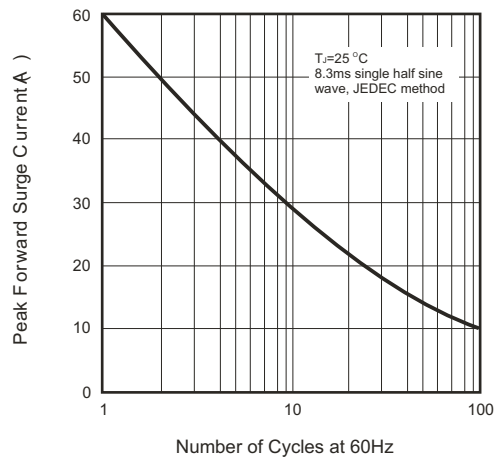


Fig.5 Test Circuit Diagram and Reverse Recovery Time Characteristics

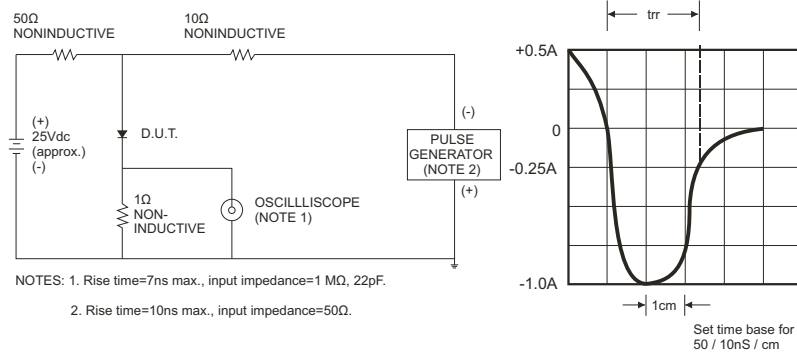
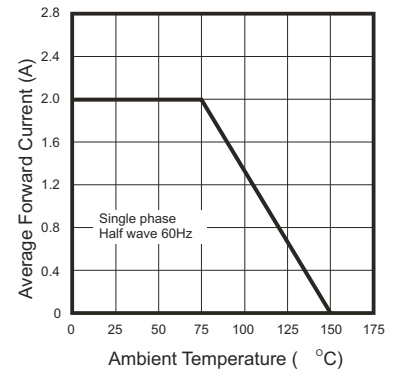


Fig.6 Current Derating Curve



Looking for pricing, stock, or lifecycle information?

Click below to explore more details on WIN SOURCE:

- [View CFRB204-G on WIN SOURCE](#)
- [Comchip Technology Information](#)

Optimize Your Supply Chain with WIN SOURCE Solutions

- ✓ Global Sourcing Solution
- ✓ Obsolete Management
- ✓ Cost Control Management
- ✓ Shortage Management
- ✓ Alternative Solution
- ✓ Excess Inventory Management