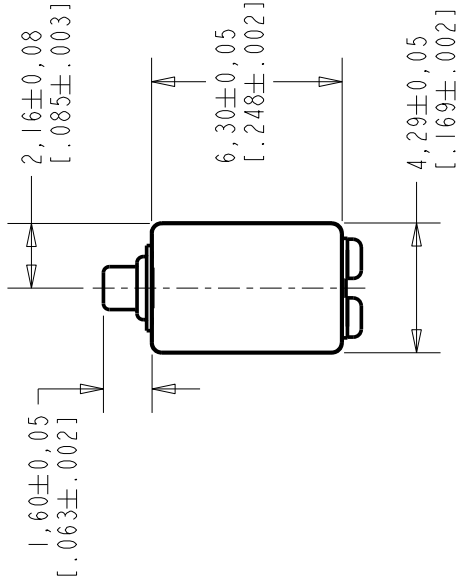




**THE DATASHEET OF  
ED-23012-000**





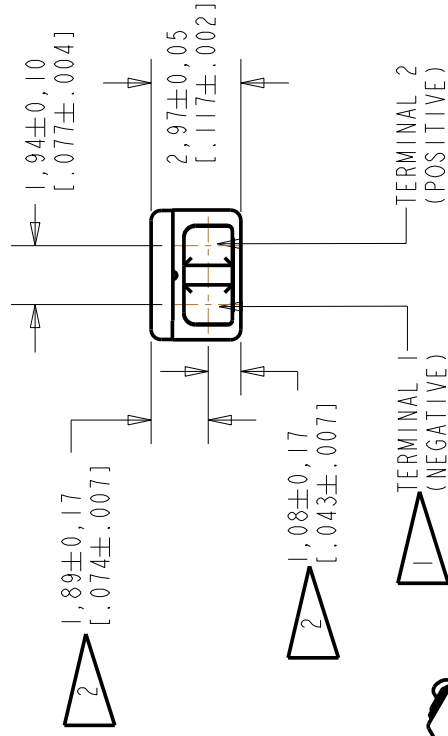
NOTE:



A POSITIVE GOING VOLTAGE  
RELATIVE TO TERMINAL  
IN PRESSURE AT THE SOURCE

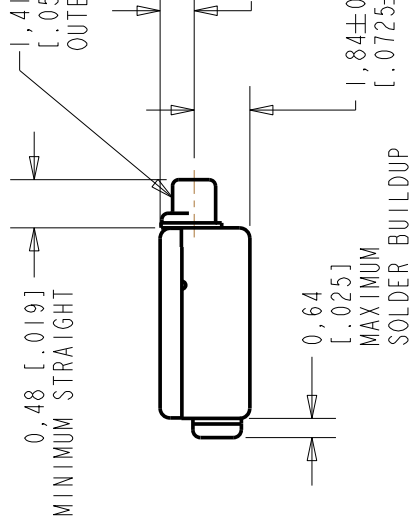


LOCATED FROM TWO SURFACES  
CONVENIENCE. ONLY APPLICABLE  
SURFACE, NOT TO BE USED FOR  
HORIZONTAL LOCATION FROM  
TO ±0,17 [±.007].



SCALE 2:1  
NOMINAL WEIGHT  
.31 GRAM

DIMENSIONS IN MILLIMETERS [INCHES]



Revision	C.O. #	Implementation Date	RELEASE
B	C10107990	8-20-08	Act
A	C10103522	12-27-05	

SCALE:

4:1

**KNOWLES ELECTRONICS**  
ITASCA, ILLINOIS U.S.A.

DO NOT SCALE DRAWING

TITLE:

**RECEIVER**

OUTLINE DRAWING

ED-23012-

SHT 1.

# KNOWLES ELECTRONICS ITASCA, ILLINOIS U.S.A.

WHEN TEST LIMITS ARE USED TO ESTABLISH INCOMING INSPECTION ACCEPTANCE/REJECTION CRITERIA, CORRELATION OF TEST EQUIPMENT WITH KNOWLES IS ALSO REQUIRED FOR ELIMINATION OF EQUIPMENT AND TEST METHOD VARIATION		PERFORMANCE SPECIFICATION	
DR. BY	DATE	TITLE:	
CRG	12-27-05	RECEIVER	
CK. BY	DATE	ED-23012-000	
GJP	12-29-05	SHT 2.1	
APP. BY	DATE	ED-23012-000	
GJP	12-29-05	ED-23012-000	
REVISION		RELEASE LEVEL	
B		Active	

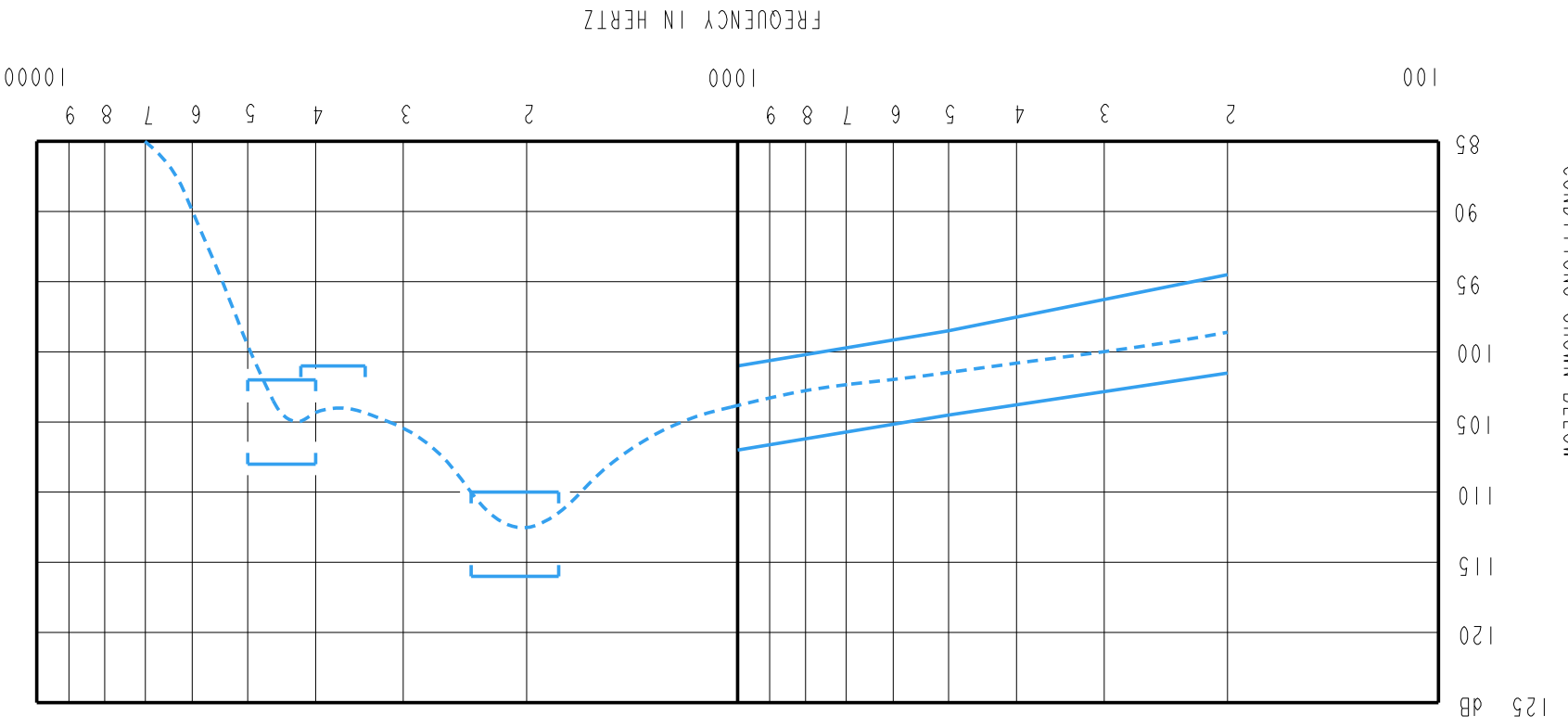
PORT LOCATION	IMPEDANCE	DCR	DISTORTION	ELECTRICAL TEST CONDITIONS
12C	760	420	196	5
	1KHz	500Hz	±10% OHMS	800
			MAX. %	0.70
			FREQ	1.00
			AC MA RMS	
			DC	

3. RESPONSE, IMPEDANCE, AND DISTORTION MEASUREMENTS MADE USING THE ELECTRICAL TEST CONDITIONS SHOWN BELOW.
4. ELECTRICAL SOURCE IMPEDANCE MUST BE GREATER THAN 20 TIMES 1KHz IMPEDANCE FOR TEST CONDITIONS SHOWN BELOW.
5. INDIVIDUAL SPECIFICATIONS.

FREQUENCY	MIN.	MAX.
200	94.5	101.5
500	98.5	104.5
1000	101.0	107.0
1800-2400	110.0	116.0
3400-4200	101.0	---
4000-5000	102.0	108.0


1. MEASUREMENTS MADE USING 10mm (.394") X 1mm (.039") ID TUBE CONNECTED TO A SIMULATED ANSI S3.7-1973 TYPE HA-3 COUPLER. (IEC 126).

NOTES:



## Looking for pricing, stock, or lifecycle information?

Click below to explore more details on WIN SOURCE:

 [View ED-23012-000](#) on WIN SOURCE

 [Knowles](#) Information

## Optimize Your Supply Chain with WIN SOURCE Solutions

-  Global Sourcing Solution
-  Obsolete Management
-  Cost Control Management
-  Shortage Management
-  Alternative Solution
-  Excess Inventory Management