



**THE DATASHEET OF  
NCP59151DS18R4G**



# NCP59150, NCV59150 Series

## 1.5 A, Very Low-Dropout (VLDO) Fast Transient Response Regulator Series

The NCP59150 series are high precision, very low dropout (VLDO), low ground current positive voltage regulators that are capable of providing an output current in excess of 1.5 A with a typical dropout voltage lower than 300 mV at 1.5 A load current. The devices are stable with ceramic output capacitors. This series consists of Adjustable output voltage and fixed voltage versions.

The NCP59150 series can withstand up to 18 V max input voltage.

Internal protection features consist of output current limiting, built-in thermal shutdown and reverse output current protection. Logic level enable and error flag pins are available on the 5-pin and 8-pin versions.

The NCP59150 series Adjustable Voltage devices are available in D2PAK-5 and DFN8 packages, the Fixed Voltage option are available in D2PAK-5, D2PAK-3 and DFN8 packages.

### Features

- Output Current in Excess of 1.5 A
- 300 mV Typical Dropout Voltage at 1.5 A
- Adjustable and Fixed Output Voltage Options
- Low Ground Current
- Fast Transient Response
- Stable with Ceramic Output Capacitor
- Logic Compatible Enable and Error Flag Pins
- Current Limit, Reverse Current and Thermal Shutdown Protection
- Operation up to 13.5 V Input Voltage
- NCV Prefix for Automotive and Other Applications Requiring Unique Site and Control Change Requirements; AEC-Q100 Qualified and PPAP Capable
- These are Pb-Free Devices

### Applications

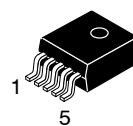
- Consumer and Industrial Equipment Point of Regulation
- Servers and Networking Equipment
- FPGA, DSP and Logic Power Supplies
- Switching Power Supply Post Regulation
- Battery Chargers
- Functional Replacement for Industry Standard MIC29150, MIC39150, MIC37150



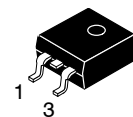
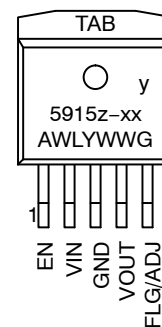
ON Semiconductor®

<http://onsemi.com>

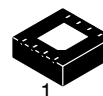
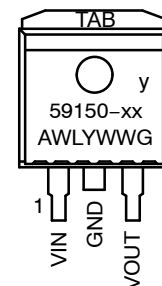
### MARKING DIAGRAMS



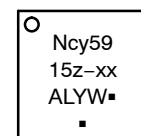
D<sup>2</sup>PAK  
CASE 936A



D<sup>2</sup>PAK3  
CASE 936



DFN8  
CASE 488AF



xx = Voltage Version  
y = P (NCP), V (NCV)  
z = 1 (Fix Voltage), 2 (Adj)  
A = Assembly Location  
L, WL = Wafer Lot  
Y, YY = Year  
W, WW = Work Week  
G, ▪ = Pb-Free Package  
(\*Note: Microdot may be in either location)

### ORDERING INFORMATION

See detailed ordering and shipping information in the package dimensions section on page 9 of this data sheet.

# NCP59150, NCV59150 Series

## TYPICAL APPLICATIONS

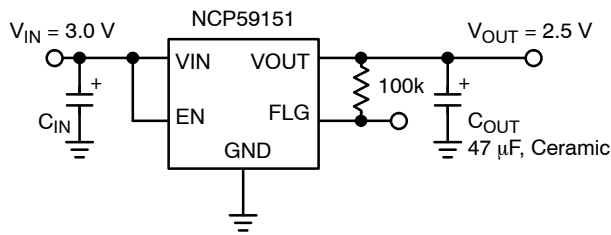


Figure 1. Fixed 2.5 Regulator with Error Flag

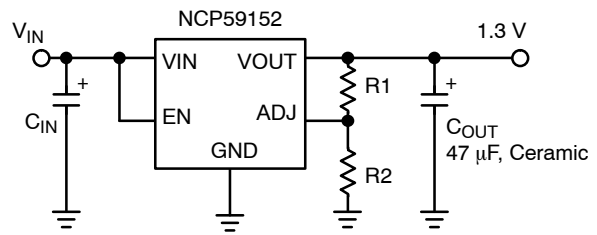


Figure 2. Adjustable Regulator

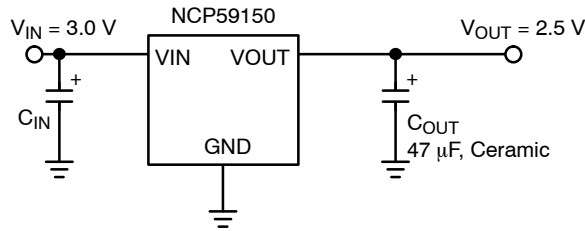


Figure 3. Fixed 2.5 Regulator in D<sup>2</sup>PAK-3 Package

### PIN FUNCTION DESCRIPTION

| Pin Number<br>D2PAK-5 | Pin Number<br>D2PAK-3 | Pin Number<br>DFN8 | Pin Name    | Pin Function  |
|-----------------------|-----------------------|--------------------|-------------|---|
| 1                     | -                     | 2                  | EN          | Enable Input: CMOS and TTL logic compatible. Logic high = enable; Logic low = shutdown.       |
| 2                     | 1                     | 3                  | VIN         | Input voltage which supplies both the internal circuitry and the current to the output load.  |
| 3                     | 2                     | 1                  | GND         | Ground  |
| TAB                   | TAB                   | -                  | TAB         | TAB is connected to ground.   |
| 4                     | 3                     | 6                  | VOUT        | Linear Regulator Output.  |
| 5 (Fixed)             | -                     | 8                  | FLG         | Error Flag Open collector output. Active-low indicates an output fault condition.             |
| 5 (Adj)               | -                     | 7 (Adj)            | ADJ         | Adjustable Regulator Feedback Input. Connect to output voltage resistor divider central node. |
| -                     | -                     | 7 (Fixed)          | VOUT SENSE  | Fixed Voltage Regulator Feedback Input. Connect to output voltage node.                       |
| -                     | -                     | EP                 | EXPOSED PAD | PAD for removing heat from the device. Must be connected to GND.                              |
| -                     | -                     | 4, 5               | NC          | Not internally connected.   |

## NCP59150, NCV59150 Series

### ABSOLUTE MAXIMUM RATINGS

| Symbol                             | Rating   | Value                             | Unit        |
|------------------------------------|--|-----------------------------------|-------------|
| V <sub>IN</sub>                    | Supply Voltage   | 0 to 18                           | V           |
| V <sub>EN</sub>                    | Enable Input Voltage   | 0 to 18                           | V           |
| V <sub>FLG</sub>                   | Error Flag Open Collector Output Maximum Voltage   | 0 to 18                           | V           |
| V <sub>OUT</sub> - V <sub>IN</sub> | Reverse V <sub>OUT</sub> - V <sub>IN</sub> Voltage (EN = Shutdown or Vin = 0 V) (Note 1) | 0 to 6.5                          | V           |
| P <sub>D</sub>                     | Power Dissipation (Notes 2 and 5)  | Internally Limited                |             |
| T <sub>J</sub>                     | Junction Temperature   | -40 ≤ T <sub>J</sub> ≤ +125       | °C          |
| T <sub>S</sub>                     | Storage Temperature  | -65 ≤ T <sub>J</sub> ≤ +150       | °C          |
|                                    | ESD Rating (Notes 3 and 4)   | Human Body Model<br>Machine Model | 2000<br>200 |

Stresses exceeding Maximum Ratings may damage the device. Maximum Ratings are stress ratings only. Functional operation above the Recommended Operating Conditions is not implied. Extended exposure to stresses above the Recommended Operating Conditions may affect device reliability.

NOTE: All voltages are referenced to GND pin unless otherwise noted.

- The ENABLE pin input voltage must be ≤ 0.8 V or Vin must be connected to ground potential.
- $P_{D(max)} = (T_{J(max)} - T_A) / R_{\theta JA}$ , where  $R_{\theta JA}$  depends upon the printed circuit board layout.
- Devices are ESD sensitive. Handling precautions recommended.
- This device series incorporates ESD protection and is tested by the following methods:  
ESD Human Body Model (HBM) tested per AEC-Q100-002 (EIA/JESD22-A114C)  
ESD Machine Model (MM) tested per AEC-Q100-003 (EIA/JESD22-A115C)  
This device contains latch-up protection and exceeds 100 mA per JEDEC Standard JESD78.
- This protection is not guaranteed outside the Recommended Operating Conditions.

### RECOMMENDED OPERATING CONDITIONS (Note 6)

| Symbol           | Rating                            | Value                       | Unit |
|------------------|-----------------------------------|-----------------------------|------|
| V <sub>IN</sub>  | Supply Voltage                    | 2.24 to 13.5                | V    |
| V <sub>EN</sub>  | Enable Input Voltage              | 0 to 13.5                   | V    |
| V <sub>FLG</sub> | Error Flag Open Collector Voltage | 0 to 13.5                   | V    |
| T <sub>J</sub>   | Junction Temperature              | -40 ≤ T <sub>J</sub> ≤ +125 | °C   |

- The device is not guaranteed to function outside it's Recommended operating conditions.

## NCP59150, NCV59150 Series

### ELECTRICAL CHARACTERISTICS

$T_J = 25^\circ\text{C}$  with  $V_{IN} = V_{OUT\text{ nominal}} + 1\text{ V}$ ;  $V_{EN} = V_{IN}$ ;  $I_L = 10\text{ mA}$ ; bold values indicate  $-40^\circ\text{C} < T_J < +125^\circ\text{C}$ , unless noted.

| Parameter  | Conditions   | Min         | Typ  | Max             | Unit            |
|--|--|-------------|------|-----------------|-----------------|
| Output Voltage Accuracy<br>DFN package                 | $I_L = 10\text{ mA}$   | -1          |      | 1               | %               |
|  | $10\text{ mA} < I_{OUT} < 1.5\text{ A}$ , $V_{OUT\text{ nominal}} + 1 \leq V_{IN} \leq 13.5\text{ V}$                      | <b>-2</b>   |      | <b>2</b>        | %               |
| Output Voltage Accuracy<br>D2PAK package               | $I_L = 10\text{ mA}$   | -1.5        |      | 1.5             | %               |
|  | $10\text{ mA} < I_{OUT} < 1.5\text{ A}$ , $V_{OUT\text{ nominal}} + 1 \leq V_{IN} \leq 13.5\text{ V}$                      | <b>-2.5</b> |      | <b>2.5</b>      | %               |
| Output Voltage Line Regulation                         | $V_{IN} = V_{OUT\text{ nominal}} + 1.0\text{ V}$ to $13.5\text{ V}$ ; $I_L = 10\text{ mA}$                                 |             | 0.02 | 0.5             | %               |
| Output Voltage Load Regulation                         | $I_L = 10\text{ mA}$ to $1.5\text{ A}$   |             | 0.2  | 1.0             | %               |
| $V_{IN} - V_{OUT}$ Dropout Voltage (Note 7)            | $I_L = 750\text{ mA}$  |             | 175  | <b>350</b>      | mV              |
|  | $I_L = 1.5\text{ A}$   |             | 300  | <b>500</b>      | mV              |
| Ground Pin Current (Note 8)                            | $I_L = 1.5\text{ A}$   |             | 40   | 60<br><b>80</b> | mA              |
| Ground Pin Current in Shutdown                         | $V_{EN} \leq 0.5\text{ V}$   |             | 1.0  | 5.0             | $\mu\text{A}$   |
| Overload Protection Current Limit                      | $V_{OUT} = 0\text{ V}$   |             | 2.0  | <b>3.0</b>      | A               |
| Start-up Time  | $V_{EN} = V_{IN}$ , $V_{OUT\text{ nominal}} = 2.5\text{ V}$ , $I_{OUT} = 10\text{ mA}$ , $C_{OUT} = 47\text{ }\mu\text{F}$ |             | 100  | 500             | $\mu\text{s}$   |
| Output Voltage Start-up Slope<br>Fixed Voltage Devices | $V_{EN} = V_{IN}$ , $I_{OUT} = 10\text{ mA}$ , $C_{OUT} = 47\text{ }\mu\text{F}$ (Note 9)                                  |             | 40   | 200             | $\mu\text{s/V}$ |

### ENABLE INPUT

|                            |  |            |    |                   |               |
|----------------------------|--|------------|----|-------------------|---------------|
| Enable Input Signal Levels | Regulator Enable   | <b>1.8</b> |    |                   | V             |
|                            | Regulator Shutdown   |            |    | <b>0.8</b>        | V             |
| Enable Pin Input Current   | $V_{EN} \leq 0.8\text{ V}$ (Regulator Shutdown)              |            |    | 2.0<br><b>4.0</b> | $\mu\text{A}$ |
|                            | $6.5\text{ V} > V_{EN} \geq 1.8\text{ V}$ (Regulator enable) | 1.0        | 15 | 30<br><b>40</b>   | $\mu\text{A}$ |

### FLAG OUTPUT

|                        |  |    |     |                   |               |
|------------------------|--|----|-----|-------------------|---------------|
| $I_{FLG(\text{leak})}$ | $V_{oh} = 13.5\text{ V}$ , Flag OFF                          |    |     | 1.0<br><b>2.0</b> | $\mu\text{A}$ |
| $V_{FLG(\text{Lo})}$   | $V_{IN} = 2.24\text{ V}$ , $I_{FLG} = 1\text{ mA}$ , Flag ON |    | 210 | 400<br><b>500</b> | mV            |
| $V_{FLG}$              | Low Threshold, % of particular $V_{OUT}$                     | 93 | 95  |                   | %             |
|                        | Hysteresis, % of particular $V_{OUT}$                        |    | 2   |                   | %             |
|                        | High Threshold, % of particular $V_{OUT}$                    |    | 97  | 99.2              | %             |

### NCP/NCV59152 ADJ VOLTAGE DEVICES ONLY

|                         |                            |                       |       |                       |    |
|-------------------------|----------------------------|-----------------------|-------|-----------------------|----|
| Reference Voltage       | DFN Package                | 1.228<br><b>1.215</b> | 1.240 | 1.252<br><b>1.265</b> | V  |
|                         | D <sup>2</sup> PAK Package | 1.221<br><b>1.209</b> | 1.240 | 1.259<br><b>1.271</b> |    |
| Adjust Pin Bias Current |                            |                       | 100   | 200<br><b>350</b>     | nA |

7.  $V_{DO} = V_{IN} - V_{OUT}$  when  $V_{OUT}$  decreases to 98% of its nominal output voltage with  $V_{IN} = V_{OUT} + 1\text{ V}$ . For output voltages below 1.74 V, dropout voltage specification does not apply due to a minimum input operating voltage of 2.24 V.

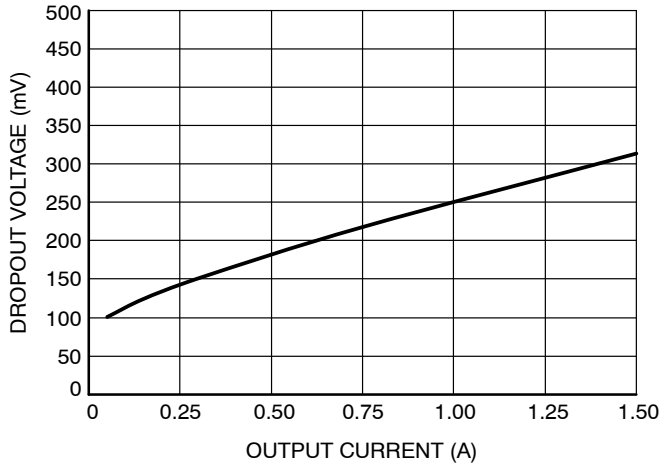
8.  $I_{IN} = I_{GND} + I_{OUT}$ .

9. Fixed Voltage Device Start-up Time = Output Voltage Start-up Slope \*  $V_{OUT\text{ nominal}}$ .

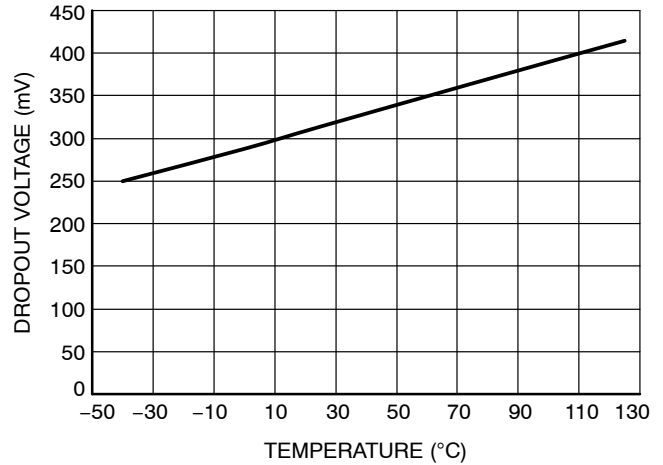
| Package                   | Conditions / PCB Footprint                                     | Thermal Resistance                    |
|---------------------------|--|---------------------------------------|
| D2PAK-3, Junction-to-Case |  | $R_{\theta JC} = 2.1^\circ\text{C/W}$ |
| D2PAK-5, Junction-to-Case |  | $R_{\theta JC} = 2.1^\circ\text{C/W}$ |
| D2PAK-3, Junction-to-Air  | PCB with 100 mm <sup>2</sup> 2.0 oz Copper Heat Spreading Area | $R_{\theta JA} = 52^\circ\text{C/W}$  |
| D2PAK-5, Junction-to-Air  | PCB with 100 mm <sup>2</sup> 2.0 oz Copper Heat Spreading Area | $R_{\theta JA} = 52^\circ\text{C/W}$  |
| DFN8, Junction-to-Air     | PCB with 500 mm <sup>2</sup> 2.0 oz Copper Heat Spreading Area | $R_{\theta JA} = 75^\circ\text{C/W}$  |

# NCP59150, NCV59150 Series

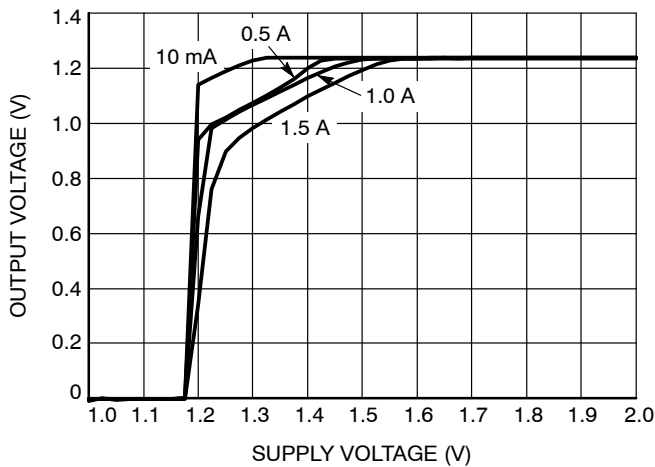
## TYPICAL CHARACTERISTICS



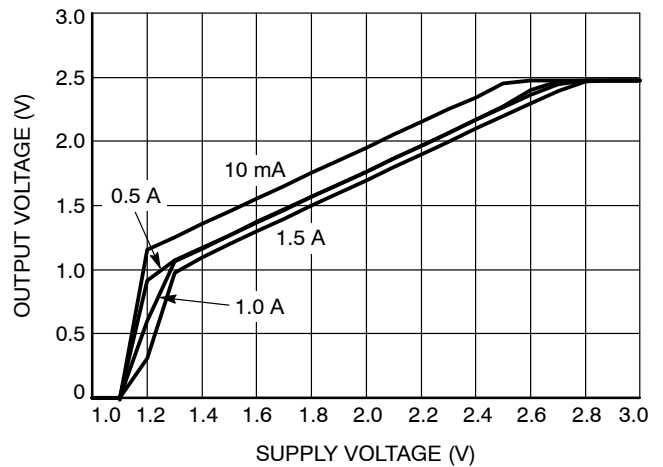
**Figure 4. Dropout Voltage vs. Output Current**  
( $V_{OUTnom} = 2.5\text{ V}$ )



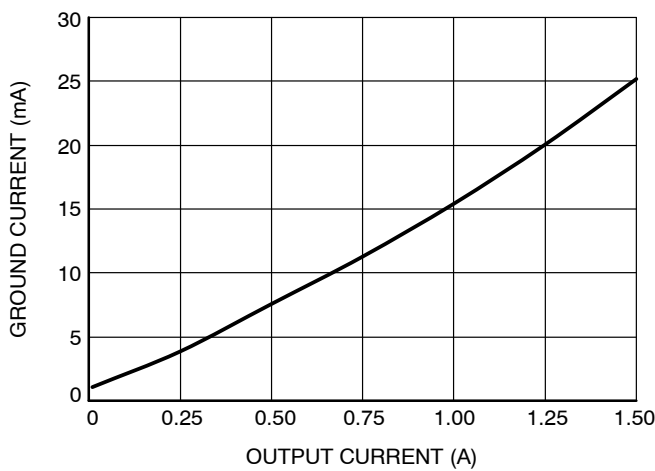
**Figure 5. Dropout Voltage vs. Temperature**  
( $V_{OUTnom} = 2.5\text{ V}$ ,  $I_{OUT} = 1.5\text{ A}$ )



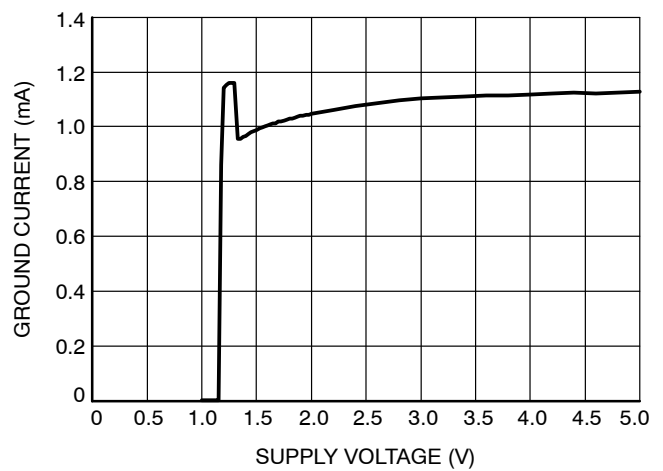
**Figure 6. Dropout Characteristics**  
( $V_{OUTnom} = 1.24\text{ V}$ )



**Figure 7. Dropout Characteristics**  
( $V_{OUTnom} = 2.5\text{ V}$ )



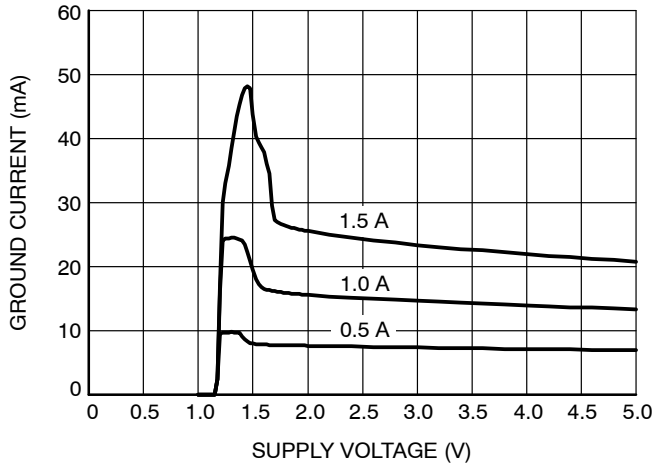
**Figure 8. Ground Current vs. Output Current**  
( $V_{OUTnom} = 1.24\text{ V}$ )



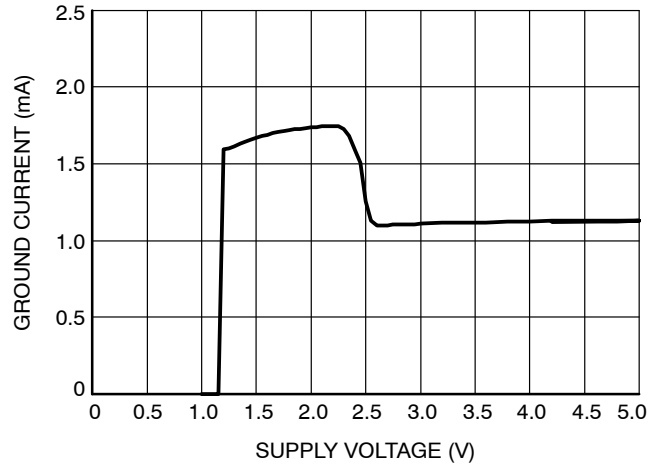
**Figure 9. Ground Current vs. Supply Voltage**  
( $V_{OUTnom} = 1.24\text{ V}$ ,  $I_{OUT} = 10\text{ mA}$ )

# NCP59150, NCV59150 Series

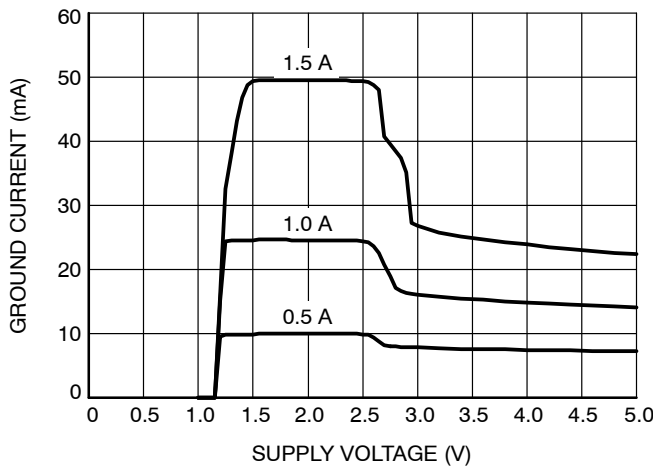
## TYPICAL CHARACTERISTICS



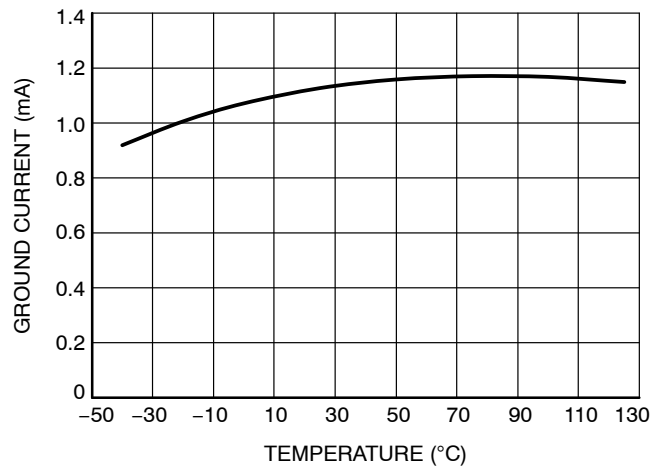
**Figure 10. Ground Current vs. Supply Voltage**  
( $V_{OUTnom} = 1.24\text{ V}$ )



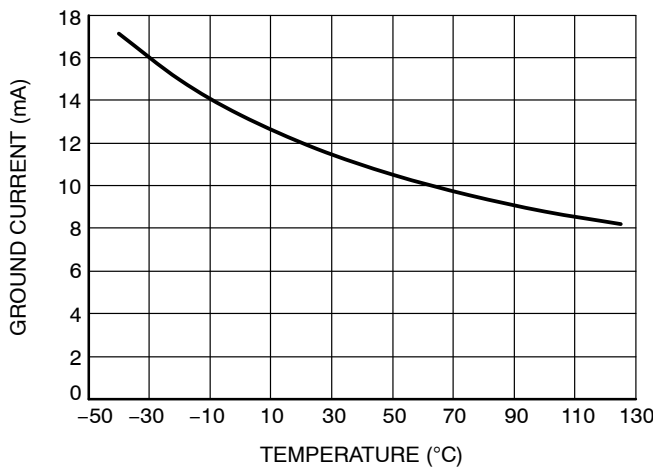
**Figure 11. Ground Current vs. Supply Voltage**  
( $V_{OUTnom} = 2.5\text{ V}$ ,  $I_{OUT} = 10\text{ mA}$ )



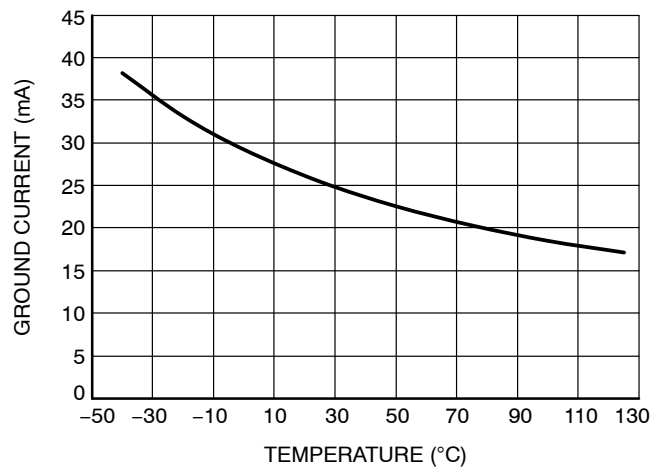
**Figure 12. Ground Current vs. Supply Voltage**  
( $V_{OUTnom} = 2.5\text{ V}$ )



**Figure 13. Ground Current vs. Temperature**  
( $V_{OUTnom} = 2.5\text{ V}$ ,  $I_{OUT} = 10\text{ mA}$ ,  $V_{IN} = 3.5\text{ V}$ )



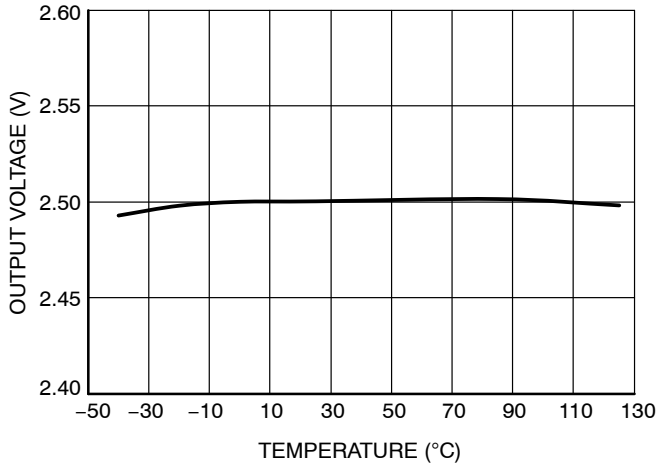
**Figure 14. Ground Current vs. Temperature**  
( $V_{OUTnom} = 2.5\text{ V}$ ,  $I_{OUT} = 0.75\text{ A}$ ,  $V_{IN} = 3.5\text{ V}$ )



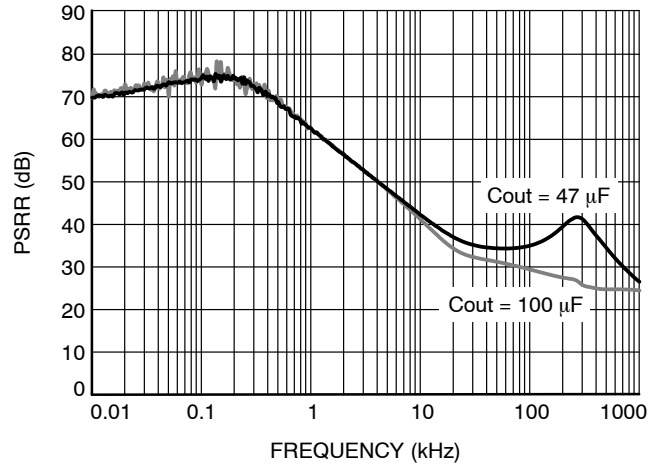
**Figure 15. Ground Current vs. Temperature**  
( $V_{OUTnom} = 2.5\text{ V}$ ,  $I_{OUT} = 1.5\text{ A}$ ,  $V_{IN} = 3.5\text{ V}$ )

# NCP59150, NCV59150 Series

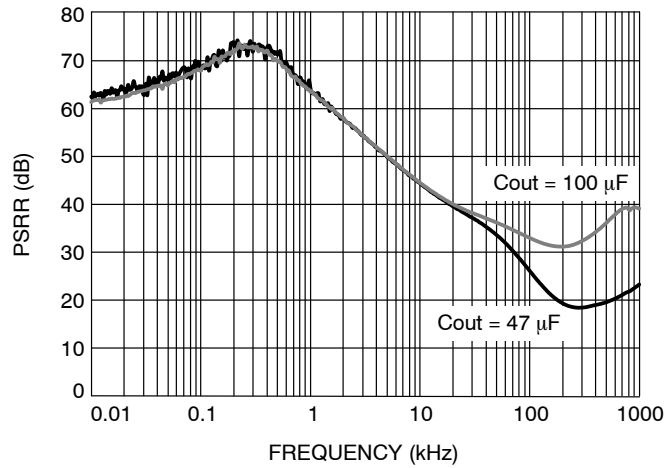
## TYPICAL CHARACTERISTICS



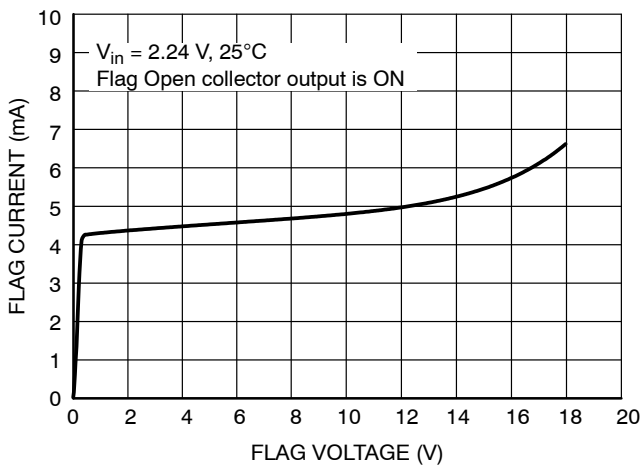
**Figure 16. Output Voltage vs. Temperature**  
 $(V_{OUTnom} = 2.5\text{ V}, I_{OUT} = 10\text{ mA})$



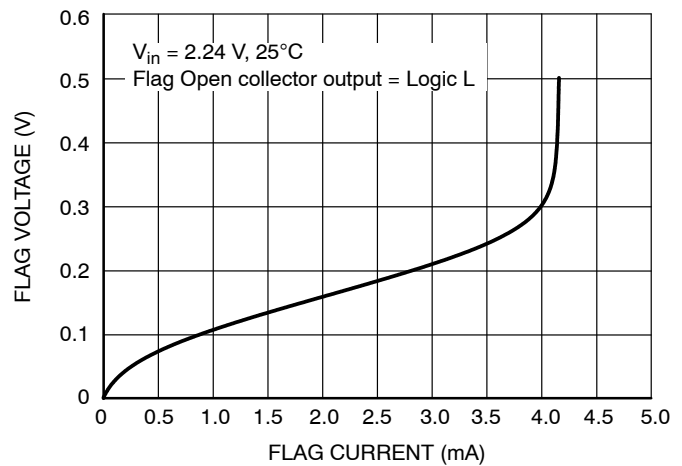
**Figure 17. PSRR vs. Frequency,  $V_{in} = 3.5\text{ V} + 200\text{ mVpp}$  Modulation,  $V_{out} = 2.5\text{ V}$ ,  $I_{out} = 0.5\text{ A}$**



**Figure 18. PSRR vs. Frequency,  $V_{in} = 3.5\text{ V} + 200\text{ mVpp}$  Modulation,  $V_{out} = 2.5\text{ V}$ ,  $I_{out} = 1.5\text{ A}$**



**Figure 19. Flag Current vs. Flag Voltage**



**Figure 20. Flag Voltage vs. Flag Current**

# NCP59150, NCV59150 Series

## TYPICAL CHARACTERISTICS

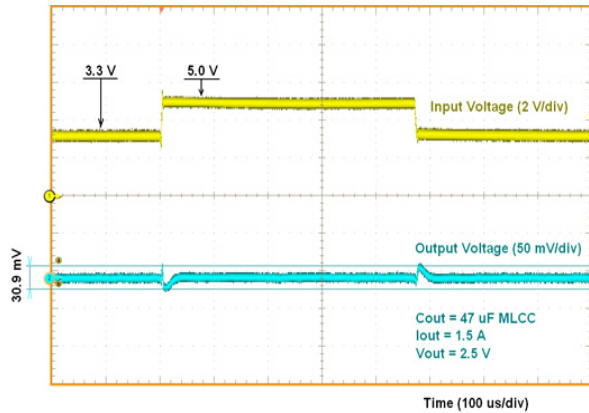


Figure 21. Line Transient Response

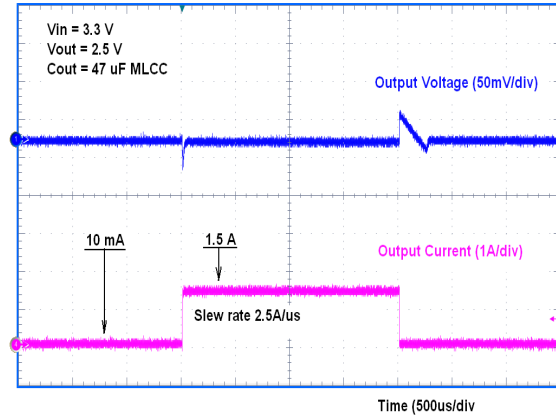


Figure 22. Load Transient Response

## APPLICATIONS INFORMATION

### Output Capacitor and Stability

The NCP59150 series requires an output capacitor for stable operation. The NCP59150 series is designed to operate with ceramic output capacitors. The recommended output capacitance value is 47  $\mu\text{F}$  or greater. Such capacitors help to improve transient response and noise reduction at high frequency.

### Input Capacitor

An input capacitor of 1.0  $\mu\text{F}$  or greater is recommended when the device is more than 4 inches away from the bulk supply capacitance, or when the supply is a battery. Small, surface-mount chip capacitors can be used for the bypassing. The capacitor should be placed within 1 inch of the device for optimal performance. Larger values will help to improve ripple rejection by bypassing the input of the regulator, further improving the integrity of the output voltage.

### Minimum Load Current

The NCP59150 regulator is specified between finite loads. A 5 mA minimum load current is necessary for proper operation.

### Error Flag

Some NCP59150 series members feature an error flag circuit that monitors the output voltage and signals an error condition when the voltage is 5% below the nominal output voltage. The error flag is an open-collector output that can sink up to 5 mA typically during a  $V_{\text{OUT}}$  fault condition.

The FLG output is overload protected when a short circuit of the pullup load resistor occurs in the application. This is guaranteed in the full range of FLG output voltage Max ratings (see Max Ratings table). Please be aware operation in this mode is not recommended, power dissipated in the device can impact on output voltage precision and other device characteristics.

### Enable Input

Some NCP59150 series members also feature an enable input for on/off control of the device. Its shutdown state draws “zero” current from input voltage supply (only microamperes of leakage). The enable input is TTL/CMOS compatible for simple logic interface, but can be connected up to  $V_{\text{IN}}$ .

### Overcurrent and Reverse Output Current Protection

The NCP59150 regulator is fully protected from damage due to output current overload and output short conditions. When NCP59150 output is overloaded, Output Current limiting is provided. This limiting is linear; output current during overload or output short conditions is constant. These features are advantageous for powering FPGAs and other ICs having current consumption higher than nominal during their startup.

Thermal shutdown disables the NCP59150 device when the die temperature exceeds the maximum safe operating temperature.

When NCP59150 is disabled and  $(V_{\text{OUT}} - V_{\text{IN}})$  voltage difference is less than 6.5 V in the application, the output structure of these regulators is able to withstand output voltage (backup battery as example) to be applied without reverse current flow. Of course the additional current flowing through the feedback resistor divider inside the Fixed Voltage devices (30  $\mu\text{A}$  typically at nominal output voltage) needs to be included in the backup battery discharging calculations.

### Adjustable Voltage Design

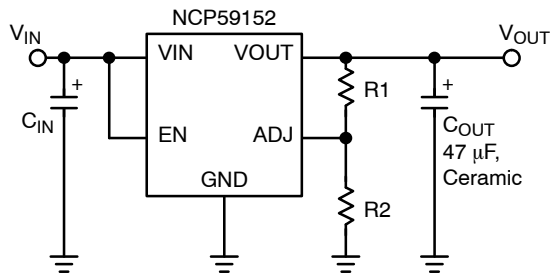
The NCP/NCV59152 Adjustable voltage Device Output voltage is set by the ratio of two external resistors as shown in Figure 23.

The device maintains the voltage at the ADJ pin at 1.24 V referenced to ground. The current in R2 is then equal to

## NCP59150, NCV59150 Series

1.24 V / R2, and the current in R1 is the current in R2 plus the ADJ pin bias current. The ADJ pin bias current flows from V<sub>OUT</sub> through R1 into the ADJ pin.

The output voltage can be calculated using the formula shown in Figure 23.



$$V_{OUT} = 1.24 \text{ V} \cdot \left( 1 + \frac{R1}{R2} \right) + I_{ADJ} \cdot R1$$

**Figure 23. Adjustable Voltage Operation**

### Thermal Considerations

The power handling capability of the device is limited by the maximum rated junction temperature (125°C). The P<sub>D</sub> total power dissipated by the device has two components, Input to output voltage differential multiplied by Output current and Input voltage multiplied by GND pin current.

$$P_D = (V_{IN} - V_{OUT}) \cdot I_{OUT} + V_{IN} \cdot I_{GND} \quad (\text{eq. 1})$$

The GND pin current value can be found in Electrical Characteristics table and in Typical Characteristics graphs.

The Junction temperature T<sub>J</sub> is

$$T_J = T_A + P_D \cdot R_{\theta JA} \quad (\text{eq. 2})$$

where T<sub>A</sub> is ambient temperature and R<sub>θJA</sub> is the Junction to Ambient Thermal Resistance of the NCP/NCV59150 device mounted on the specific PCB.

To maximize efficiency of the application and minimize thermal power dissipation of the device it is convenient to use the Input to output voltage differential as low as possible.

The static typical dropout characteristics for various output voltage and output current can be found in the Typical Characteristics graphs.

### ORDERING INFORMATION

| Device           | Output Current | Output Voltage | Junction Temp. Range | Package                        | Shipping <sup>†</sup> |
|------------------|----------------|----------------|----------------------|--------------------------------|-----------------------|
| NCP59150DS18R4G  | 1.5 A          | 1.8 V          | -40°C to +125°C      | D <sup>2</sup> PAK-3 (Pb-Free) | Contact Sales Office  |
| NCP59150DS25R4G  | 1.5 A          | 2.5 V          | -40°C to +125°C      | D <sup>2</sup> PAK-3 (Pb-Free) | Contact Sales Office  |
| NCP59150DS28R4G  | 1.5 A          | 2.8 V          | -40°C to +125°C      | D <sup>2</sup> PAK-3 (Pb-Free) | Contact Sales Office  |
| NCP59150DS30R4G  | 1.5 A          | 3.0 V          | -40°C to +125°C      | D <sup>2</sup> PAK-3 (Pb-Free) | Contact Sales Office  |
| NCP59150DS33R4G  | 1.5 A          | 3.3 V          | -40°C to +125°C      | D <sup>2</sup> PAK-3 (Pb-Free) | Contact Sales Office  |
| NCP59150DS50R4G  | 1.5 A          | 5.0 V          | -40°C to +125°C      | D <sup>2</sup> PAK-3 (Pb-Free) | Contact Sales Office  |
| NCV59150DS18R4G* | 1.5 A          | 1.8 V          | -40°C to +125°C      | D <sup>2</sup> PAK-3 (Pb-Free) | Contact Sales Office  |
| NCV59150DS25R4G* | 1.5 A          | 2.5 V          | -40°C to +125°C      | D <sup>2</sup> PAK-3 (Pb-Free) | Contact Sales Office  |
| NCV59150DS28R4G* | 1.5 A          | 2.8 V          | -40°C to +125°C      | D <sup>2</sup> PAK-3 (Pb-Free) | Contact Sales Office  |
| NCV59150DS30R4G* | 1.5 A          | 3.0 V          | -40°C to +125°C      | D <sup>2</sup> PAK-3 (Pb-Free) | Contact Sales Office  |
| NCV59150DS33R4G* | 1.5 A          | 3.3 V          | -40°C to +125°C      | D <sup>2</sup> PAK-3 (Pb-Free) | Contact Sales Office  |
| NCV59150DS50R4G* | 1.5 A          | 5.0 V          | -40°C to +125°C      | D <sup>2</sup> PAK-3 (Pb-Free) | Contact Sales Office  |
| NCP59151DS18R4G  | 1.5 A          | 1.8 V          | -40°C to +125°C      | D <sup>2</sup> PAK-5 (Pb-Free) | 800 / Tape & Reel     |

<sup>†</sup>For information on tape and reel specifications, including part orientation and tape sizes, please refer to our Tape and Reel Packaging Specifications Brochure, BRD8011/D.

\*NCV Prefix for Automotive and Other Applications Requiring Unique Site and Control Change Requirements; AEC-Q100 Qualified and PPAP Capable

## NCP59150, NCV59150 Series

### ORDERING INFORMATION (continued)

| Device           | Output Current | Output Voltage | Junction Temp. Range | Package                        | Shipping <sup>†</sup> |
|------------------|----------------|----------------|----------------------|--------------------------------|-----------------------|
| NCP59151DS25R4G  | 1.5 A          | 2.5 V          | -40°C to +125°C      | D <sup>2</sup> PAK-5 (Pb-Free) | 800 / Tape & Reel     |
| NCP59151DS28R4G  | 1.5 A          | 2.8 V          | -40°C to +125°C      | D <sup>2</sup> PAK-5 (Pb-Free) | 800 / Tape & Reel     |
| NCP59151DS30R4G  | 1.5 A          | 3.0 V          | -40°C to +125°C      | D <sup>2</sup> PAK-5 (Pb-Free) | 800 / Tape & Reel     |
| NCP59151DS33R4G  | 1.5 A          | 3.3 V          | -40°C to +125°C      | D <sup>2</sup> PAK-5 (Pb-Free) | 800 / Tape & Reel     |
| NCP59151DS50R4G  | 1.5 A          | 5.0 V          | -40°C to +125°C      | D <sup>2</sup> PAK-5 (Pb-Free) | 800 / Tape & Reel     |
| NCV59151DS18R4G* | 1.5 A          | 1.8 V          | -40°C to +125°C      | D <sup>2</sup> PAK-5 (Pb-Free) | 800 / Tape & Reel     |
| NCV59151DS25R4G* | 1.5 A          | 2.5 V          | -40°C to +125°C      | D <sup>2</sup> PAK-5 (Pb-Free) | 800 / Tape & Reel     |
| NCV59151DS28R4G* | 1.5 A          | 2.8 V          | -40°C to +125°C      | D <sup>2</sup> PAK-5 (Pb-Free) | 800 / Tape & Reel     |
| NCV59151DS30R4G* | 1.5 A          | 3.0 V          | -40°C to +125°C      | D <sup>2</sup> PAK-5 (Pb-Free) | 800 / Tape & Reel     |
| NCV59151DS33R4G  | 1.5 A          | 3.3 V          | -40°C to +125°C      | D <sup>2</sup> PAK-5 (Pb-Free) | 800 / Tape & Reel     |
| NCV59151DS50R4G  | 1.5 A          | 5.0 V          | -40°C to +125°C      | D <sup>2</sup> PAK-5 (Pb-Free) | 800 / Tape & Reel     |
| NCP59151MN18TYG  | 1.5 A          | 1.8 V          | -40°C to +125°C      | DFN8-4x4 (Pb-Free)             | 4000 / Tape & Reel    |
| NCP59151MN25TYG  | 1.5 A          | 2.5 V          | -40°C to +125°C      | DFN8-4x4 (Pb-Free)             | 4000 / Tape & Reel    |
| NCP59151MN28TYG  | 1.5 A          | 2.8 V          | -40°C to +125°C      | DFN8-4x4 (Pb-Free)             | 4000 / Tape & Reel    |
| NCP59151MN30TYG  | 1.5 A          | 3.0 V          | -40°C to +125°C      | DFN8-4x4 (Pb-Free)             | 4000 / Tape & Reel    |
| NCP59151MN33TYG  | 1.5 A          | 3.3 V          | -40°C to +125°C      | DFN8-4x4 (Pb-Free)             | 4000 / Tape & Reel    |
| NCP59151MN50TYG  | 1.5 A          | 5.0 V          | -40°C to +125°C      | DFN8-4x4 (Pb-Free)             | 4000 / Tape & Reel    |
| NCV59151MN18TYG  | 1.5 A          | 1.8 V          | -40°C to +125°C      | DFN8-4x4 (Pb-Free)             | 4000 / Tape & Reel    |
| NCV59151MN25TYG  | 1.5 A          | 2.5 V          | -40°C to +125°C      | DFN8-4x4 (Pb-Free)             | 4000 / Tape & Reel    |
| NCV59151MN28TYG  | 1.5 A          | 2.8 V          | -40°C to +125°C      | DFN8-4x4 (Pb-Free)             | 4000 / Tape & Reel    |
| NCV59151MN30TYG  | 1.5 A          | 3.0 V          | -40°C to +125°C      | DFN8-4x4 (Pb-Free)             | 4000 / Tape & Reel    |
| NCV59151MN33TYG  | 1.5 A          | 3.3 V          | -40°C to +125°C      | DFN8-4x4 (Pb-Free)             | 4000 / Tape & Reel    |
| NCV59151MN50TYG  | 1.5 A          | 5.0 V          | -40°C to +125°C      | DFN8-4x4 (Pb-Free)             | 4000 / Tape & Reel    |
| NCP59152MNADJTYG | 1.5 A          | ADJ            | -40°C to +125°C      | DFN8-4x4 (Pb-Free)             | 4000 / Tape & Reel    |
| NCV59152MNADJTYG | 1.5 A          | ADJ            | -40°C to +125°C      | DFN8-4x4 (Pb-Free)             | 4000 / Tape & Reel    |

<sup>†</sup>For information on tape and reel specifications, including part orientation and tape sizes, please refer to our Tape and Reel Packaging Specifications Brochure, BRD8011/D.

\*NCV Prefix for Automotive and Other Applications Requiring Unique Site and Control Change Requirements; AEC-Q100 Qualified and PPAP Capable

## NCP59150, NCV59150 Series

### ORDERING INFORMATION (continued)

| Device           | Output Current | Output Voltage | Junction Temp. Range | Package              | Shipping <sup>†</sup> |
|------------------|----------------|----------------|----------------------|----------------------|-----------------------|
| NCP59152DSADJR4G | 1.5 A          | ADJ            | -40°C to +125°C      | D2PAK-5<br>(Pb-Free) | 800 / Tape & Reel     |
| NCV59152DSADJR4G | 1.5 A          | ADJ            | -40°C to +125°C      | D2PAK-5<br>(Pb-Free) | 800 / Tape & Reel     |

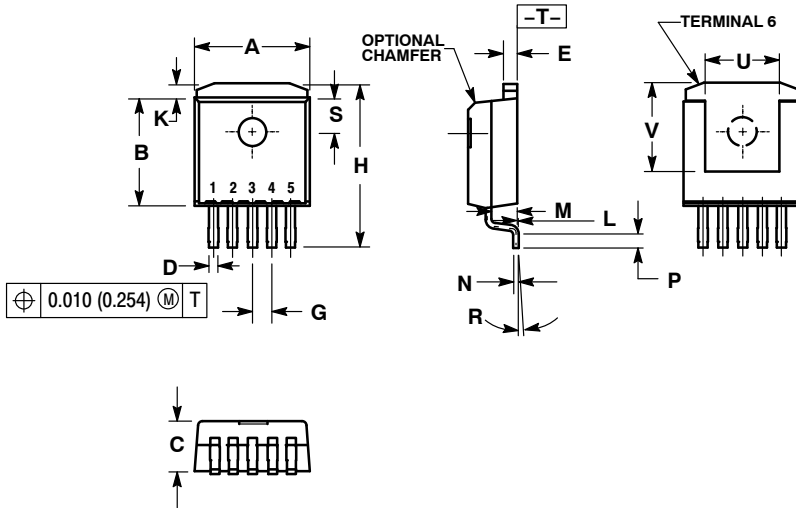
<sup>†</sup>For information on tape and reel specifications, including part orientation and tape sizes, please refer to our Tape and Reel Packaging Specifications Brochure, BRD8011/D.

\*NCV Prefix for Automotive and Other Applications Requiring Unique Site and Control Change Requirements; AEC-Q100 Qualified and PPAP Capable

# NCP59150, NCV59150 Series

## PACKAGE DIMENSIONS

### D<sup>2</sup>PAK 5 CASE 936A-02 ISSUE C

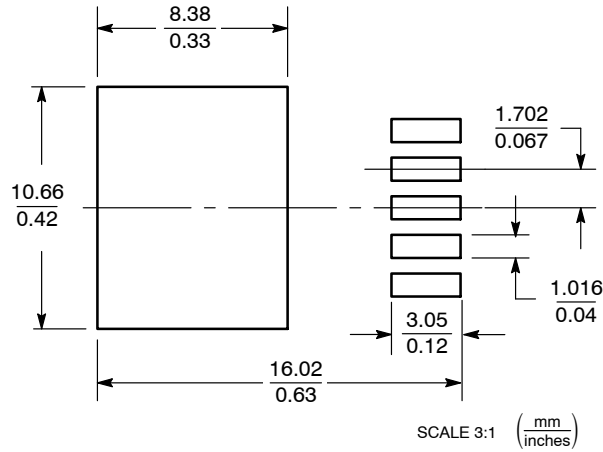


**NOTES:**

1. DIMENSIONING AND TOLERANCING PER ANSI Y14.5M, 1982.
2. CONTROLLING DIMENSION: INCH.
3. TAB CONTOUR OPTIONAL WITHIN DIMENSIONS A AND K.
4. DIMENSIONS U AND V ESTABLISH A MINIMUM MOUNTING SURFACE FOR TERMINAL 6.
5. DIMENSIONS A AND B DO NOT INCLUDE MOLD FLASH OR GATE PROTRUSIONS. MOLD FLASH AND GATE PROTRUSIONS NOT TO EXCEED 0.025 (0.635) MAXIMUM.

| DIM | INCHES    |       | MILLIMETERS |        |
|-----|-----------|-------|-------------|--------|
|     | MIN       | MAX   | MIN         | MAX    |
| A   | 0.386     | 0.403 | 9.804       | 10.236 |
| B   | 0.356     | 0.368 | 9.042       | 9.347  |
| C   | 0.170     | 0.180 | 4.318       | 4.572  |
| D   | 0.026     | 0.036 | 0.660       | 0.914  |
| E   | 0.045     | 0.055 | 1.143       | 1.397  |
| G   | 0.067 BSC |       | 1.702 BSC   |        |
| H   | 0.539     | 0.579 | 13.691      | 14.707 |
| K   | 0.050 REF |       | 1.270 REF   |        |
| L   | 0.000     | 0.010 | 0.000       | 0.254  |
| M   | 0.088     | 0.102 | 2.235       | 2.591  |
| N   | 0.018     | 0.026 | 0.457       | 0.660  |
| P   | 0.058     | 0.078 | 1.473       | 1.981  |
| R   | 5° REF    |       | 5° REF      |        |
| S   | 0.116 REF |       | 2.946 REF   |        |
| U   | 0.200 MIN |       | 5.080 MIN   |        |
| V   | 0.250 MIN |       | 6.350 MIN   |        |

### SOLDERING FOOTPRINT



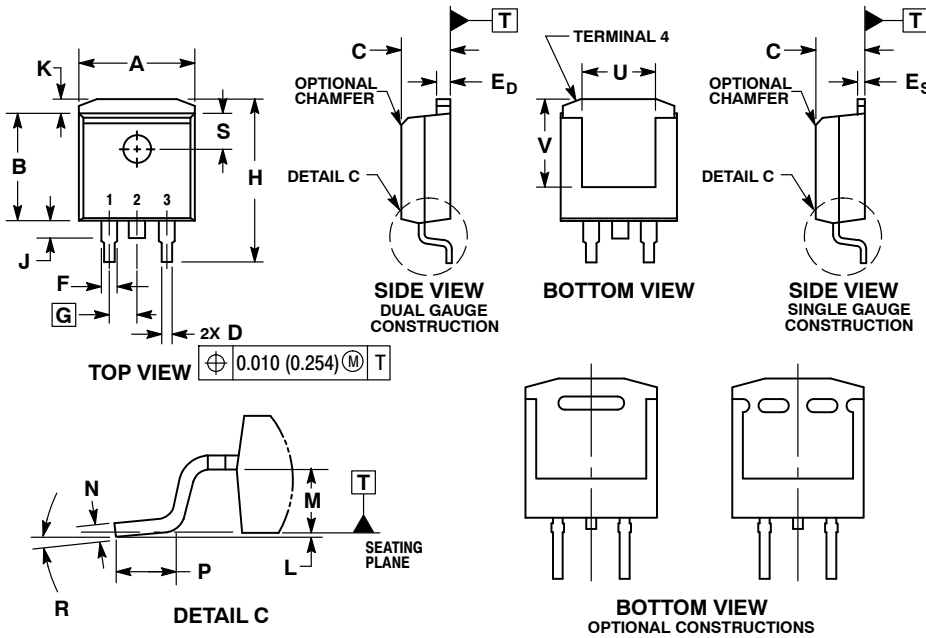
SCALE 3:1 ( $\frac{\text{mm}}{\text{inches}}$ )

### 5-LEAD D<sup>2</sup>PAK

# NCP59150, NCV59150 Series

## PACKAGE DIMENSIONS

### D<sup>2</sup>PAK CASE 936-03 ISSUE D

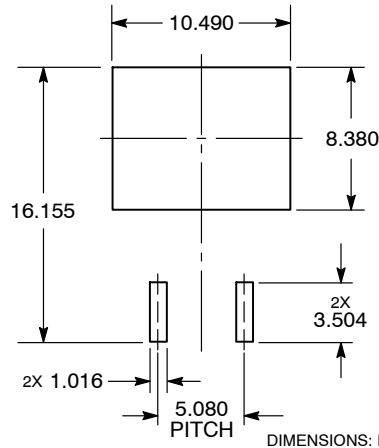


#### NOTES:

1. DIMENSIONING AND TOLERANCING PER ANSI Y14.5M, 1982.
2. CONTROLLING DIMENSION: INCHES.
3. TAB CONTOUR OPTIONAL WITHIN DIMENSIONS A AND K.
4. DIMENSIONS U AND V ESTABLISH A MINIMUM MOUNTING SURFACE FOR TERMINAL 4.
5. DIMENSIONS A AND B DO NOT INCLUDE MOLD FLASH OR GATE PROTRUSIONS. MOLD FLASH AND GATE PROTRUSIONS NOT TO EXCEED 0.025 (0.635) MAXIMUM.
6. SINGLE GAUGE DESIGN WILL BE SHIPPED AFTER FPCN EXPIRATION IN OCTOBER 2011.

| DIM            | INCHES    |       | MILLIMETERS |        |
|----------------|-----------|-------|-------------|--------|
|                | MIN       | MAX   | MIN         | MAX    |
| A              | 0.386     | 0.403 | 9.804       | 10.236 |
| B              | 0.356     | 0.368 | 9.042       | 9.347  |
| C              | 0.170     | 0.180 | 4.318       | 4.572  |
| D              | 0.026     | 0.036 | 0.660       | 0.914  |
| E <sub>D</sub> | 0.045     | 0.055 | 1.143       | 1.397  |
| E <sub>S</sub> | 0.018     | 0.026 | 0.457       | 0.660  |
| F              | 0.051 REF |       | 1.295 REF   |        |
| G              | 0.100 BSC |       | 2.540 BSC   |        |
| H              | 0.539     | 0.579 | 13.691      | 14.707 |
| J              | 0.125 MAX |       | 3.175 MAX   |        |
| K              | 0.050 REF |       | 1.270 REF   |        |
| L              | 0.000     | 0.010 | 0.000       | 0.254  |
| M              | 0.088     | 0.102 | 2.235       | 2.591  |
| N              | 0.018     | 0.026 | 0.457       | 0.660  |
| P              | 0.058     | 0.078 | 1.473       | 1.981  |
| R              | 5° REF    |       | 5° REF      |        |
| S              | 0.116 REF |       | 2.946 REF   |        |
| U              | 0.200 MIN |       | 5.080 MIN   |        |
| V              | 0.250 MIN |       | 6.350 MIN   |        |

#### SOLDERING FOOTPRINT\*

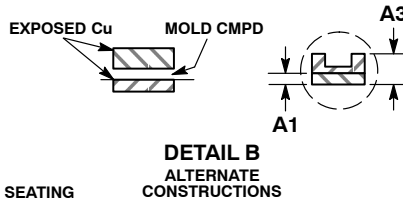
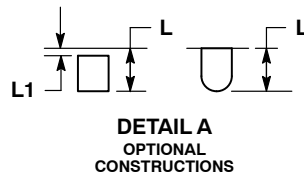
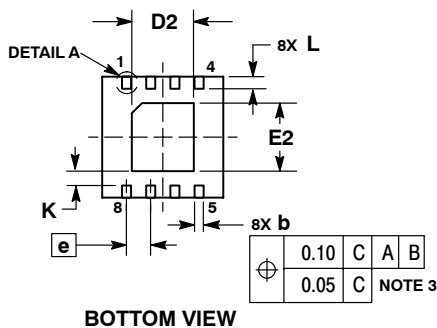
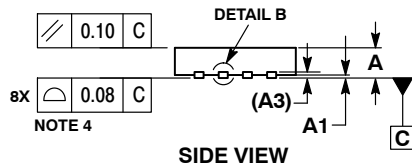
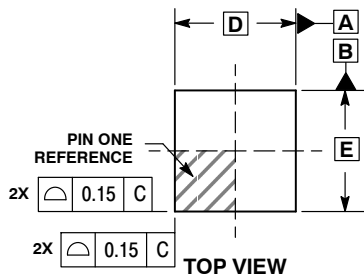


\*For additional information on our Pb-Free strategy and soldering details, please download the ON Semiconductor Soldering and Mounting Techniques Reference Manual, SOLDERRM/D.

# NCP59150, NCV59150 Series

## PACKAGE DIMENSIONS

DFN8, 4x4  
CASE 488AF  
ISSUE C

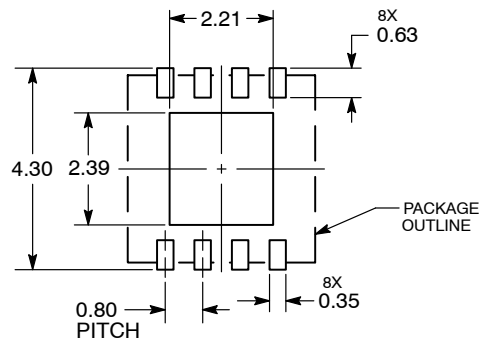


**NOTES:**

1. DIMENSIONS AND TOLERANCING PER ASME Y14.5M, 1994.
2. CONTROLLING DIMENSION: MILLIMETERS.
3. DIMENSION b APPLIES TO PLATED TERMINAL AND IS MEASURED BETWEEN 0.15 AND 0.30MM FROM TERMINAL TIP.
4. COPLANARITY APPLIES TO THE EXPOSED PAD AS WELL AS THE TERMINALS.
5. DETAILS A AND B SHOW OPTIONAL CONSTRUCTIONS FOR TERMINALS.

| DIM | MILLIMETERS |      |
|-----|-------------|------|
|     | MIN         | MAX  |
| A   | 0.80        | 1.00 |
| A1  | 0.00        | 0.05 |
| A3  | 0.20        | REF  |
| b   | 0.25        | 0.35 |
| D   | 4.00        | BSC  |
| D2  | 1.91        | 2.21 |
| E   | 4.00        | BSC  |
| E2  | 2.09        | 2.39 |
| e   | 0.80        | BSC  |
| K   | 0.20        | ---  |
| L   | 0.30        | 0.50 |
| L1  | ---         | 0.15 |

**SOLDERING FOOTPRINT\***



DIMENSIONS: MILLIMETERS

\*For additional information on our Pb-Free strategy and soldering details, please download the ON Semiconductor Soldering and Mounting Techniques Reference Manual, SOLDERRM/D.

ON Semiconductor and are registered trademarks of Semiconductor Components Industries, LLC (SCILLC). SCILLC owns the rights to a number of patents, trademarks, copyrights, trade secrets, and other intellectual property. A listing of SCILLC's product/patent coverage may be accessed at [www.onsemi.com/site/pdf/Patent-Marking.pdf](http://www.onsemi.com/site/pdf/Patent-Marking.pdf). SCILLC reserves the right to make changes without further notice to any products herein. SCILLC makes no warranty, representation or guarantee regarding the suitability of its products for any particular purpose, nor does SCILLC assume any liability arising out of the application or use of any product or circuit, and specifically disclaims any and all liability, including without limitation special, consequential or incidental damages. "Typical" parameters which may be provided in SCILLC data sheets and/or specifications can and do vary in different applications and actual performance may vary over time. All operating parameters, including "Typicals" must be validated for each customer application by customer's technical experts. SCILLC does not convey any license under its patent rights nor the rights of others. SCILLC products are not designed, intended, or authorized for use as components in systems intended for surgical implant into the body, or other applications intended to support or sustain life, or for any other application in which the failure of the SCILLC product could create a situation where personal injury or death may occur. Should Buyer purchase or use SCILLC products for any such unintended or unauthorized application, Buyer shall indemnify and hold SCILLC and its officers, employees, subsidiaries, affiliates, and distributors harmless against all claims, costs, damages, and expenses, and reasonable attorney fees arising out of, directly or indirectly, any claim of personal injury or death associated with such unintended or unauthorized use, even if such claim alleges that SCILLC was negligent regarding the design or manufacture of the part. SCILLC is an Equal Opportunity/Affirmative Action Employer. This literature is subject to all applicable copyright laws and is not for resale in any manner.

**PUBLICATION ORDERING INFORMATION**

**LITERATURE FULFILLMENT:**  
Literature Distribution Center for ON Semiconductor  
P.O. Box 5163, Denver, Colorado 80217 USA  
**Phone:** 303-675-2175 or 800-344-3860 Toll Free USA/Canada  
**Fax:** 303-675-2176 or 800-344-3867 Toll Free USA/Canada  
**Email:** [orderlit@onsemi.com](mailto:orderlit@onsemi.com)

**N. American Technical Support:** 800-282-9855 Toll Free  
USA/Canada  
**Europe, Middle East and Africa Technical Support:**  
Phone: 421 33 790 2910  
**Japan Customer Focus Center**  
Phone: 81-3-5817-1050

**ON Semiconductor Website:** [www.onsemi.com](http://www.onsemi.com)  
**Order Literature:** <http://www.onsemi.com/orderlit>  
For additional information, please contact your local Sales Representative

## Looking for pricing, stock, or lifecycle information?

Click below to explore more details on WIN SOURCE:

- ⊖ [View NCP59151DS18R4G on WIN SOURCE](#)
- ⊖ [ON Semiconductor Information](#)

## Optimize Your Supply Chain with WIN SOURCE Solutions

- ✓ Global Sourcing Solution
- ✓ Obsolete Management
- ✓ Cost Control Management
- ✓ Shortage Management
- ✓ Alternative Solution
- ✓ Excess Inventory Management