

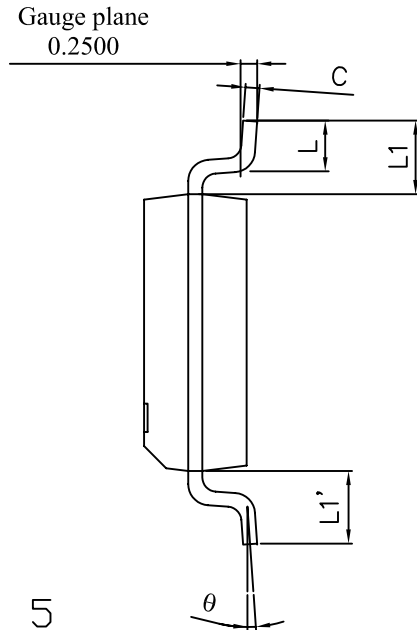
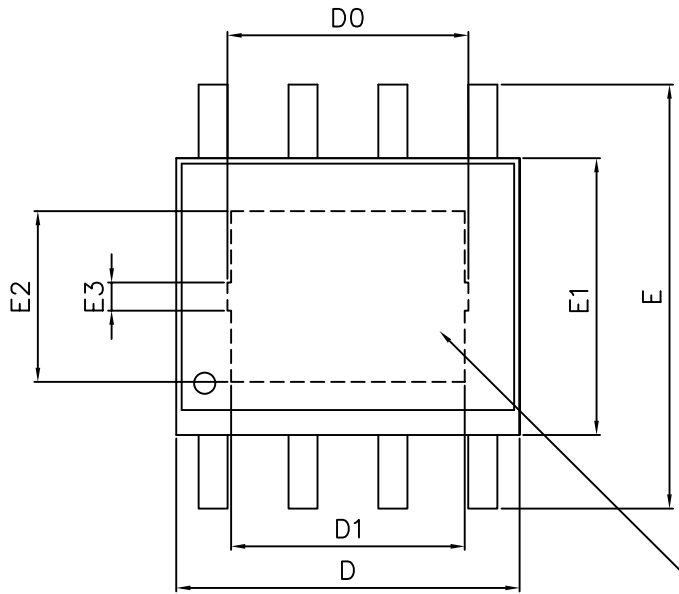


**THE DATASHEET OF
AOZ1253PI**

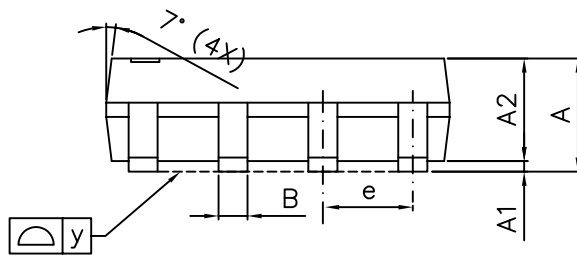




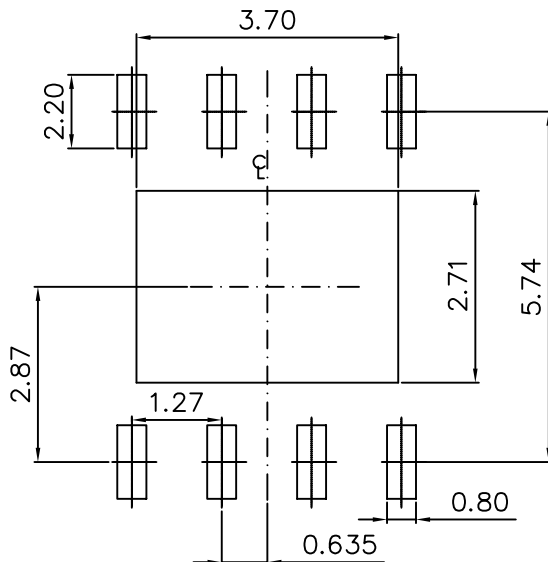
S08_EP1 PACKAGE OUTLINE



NOTE 5



RECOMMENDED LAND PATTERN



| SYMBOLS | DIMENSIONS IN MILLIMETERS | | | DIMENSIONS IN INCHES | | |
|----------|---------------------------|-------|------|----------------------|-------|-------|
| | MIN | NOM | MAX | MIN | NOM | MAX |
| A | 1.40 | 1.55 | 1.70 | 0.055 | 0.061 | 0.067 |
| A1 | 0.00 | 0.05 | 0.10 | 0.000 | 0.002 | 0.004 |
| A2 | 1.40 | 1.50 | 1.60 | 0.055 | 0.059 | 0.063 |
| B | 0.31 | 0.406 | 0.51 | 0.012 | 0.016 | 0.020 |
| C | 0.17 | — | 0.25 | 0.007 | — | 0.010 |
| D | 4.80 | 4.96 | 5.00 | 0.189 | 0.195 | 0.197 |
| D0 | 3.20 | 3.40 | 3.60 | 0.126 | 0.134 | 0.142 |
| D1 | 3.10 | 3.30 | 3.50 | 0.122 | 0.130 | 0.138 |
| E | 5.80 | 6.00 | 6.20 | 0.228 | 0.236 | 0.244 |
| e | — | 1.27 | — | — | 0.050 | — |
| E1 | 3.80 | 3.90 | 4.00 | 0.150 | 0.153 | 0.157 |
| E2 | 2.21 | 2.41 | 2.61 | 0.087 | 0.095 | 0.103 |
| E3 | 0.40 REF | | | 0.016 REF | | |
| L | 0.40 | 0.95 | 1.27 | 0.016 | 0.037 | 0.050 |
| y | — | — | 0.10 | — | — | 0.004 |
| θ | 0° | 3° | 8° | 0° | 3° | 8° |
| [L1-L1'] | — | 0.04 | 0.12 | — | 0.002 | 0.005 |
| L1 | 1.04REF | | | 0.041REF | | |

NOTE

UNIT: mm

1. PACKAGE BODY SIZES EXCLUDE MOLD FLASH AND GATE BURRS
2. DIMENSION L IS MEASURED IN GAGE PLANE
3. TOLERANCE 0.10 mm UNLESS OTHERWISE SPECIFIED
4. CONTROLLING DIMENSION IS MILLIMETER. CONVERTED INCH DIMENSIONS ARE NOT NECESSARILY EXACT.
5. DIE PAD EXPOSURE SIZE IS ACCORDING TO LEAD FRAME DESIGN.
6. FOLLOWED FROM JEDEC MS-012

Looking for pricing, stock, or lifecycle information?

Click below to explore more details on WIN SOURCE:

- ⊖ [View AOZ1253PI on WIN SOURCE](#)
- ⊖ [Alpha & Omega Semiconductor Inc. Information](#)

Optimize Your Supply Chain with WIN SOURCE Solutions

- ✓ Global Sourcing Solution
- ✓ Obsolete Management
- ✓ Cost Control Management
- ✓ Shortage Management
- ✓ Alternative Solution
- ✓ Excess Inventory Management