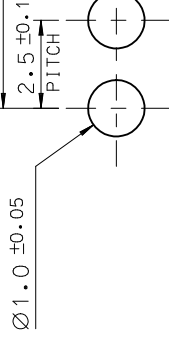
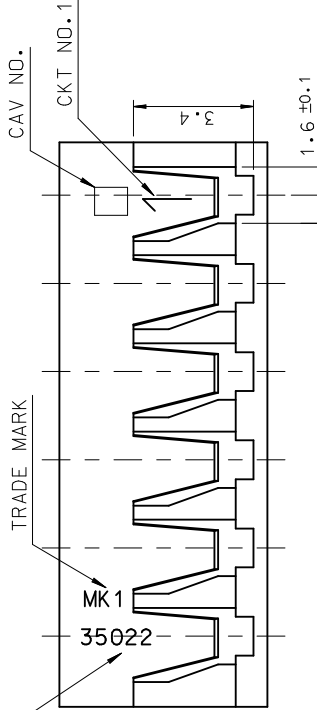
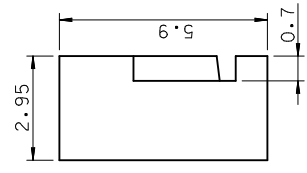
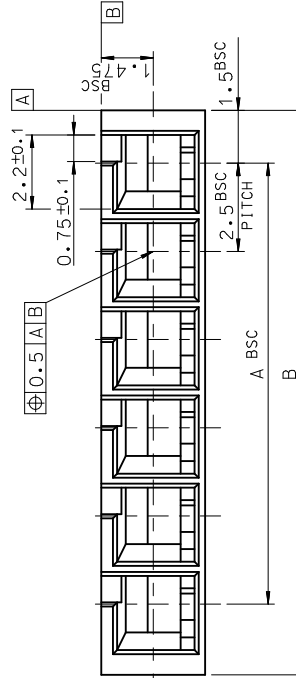
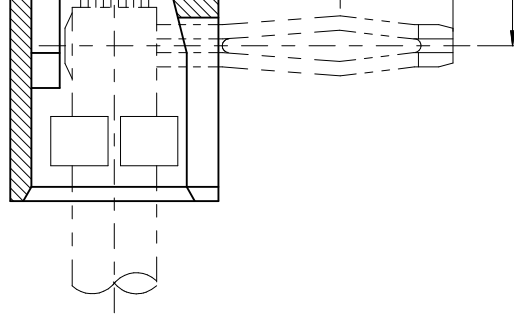




**THE DATASHEET OF**  
**350220010**



10 9 8 7 6 5 4 3



P.C. BOARD  
(THK)

NOTE.  
 1. MATERIAL : ① PA66,UL94V-0  
 COLOR : IVORY  
 2. APPLICABLE TERMINAL : 35021-1001/1101

①

41.0	37.5	35022-0016	16
38.5	35.0	-0015	15
36.0	32.5	-0014	14
33.5	30.0	-0013	13
31.0	27.5	-0012	12
28.5	25.0	-0011	11
26.0	22.5	-0010	10

GENERAL TOLERANCES (UNLESS SPECIFIED)		DIMENSION STYLE	
B	A	ENG NO.	CKT NO.
QUALITY SYMBOLS		DRAWN BY	
▶=0	□=0	DATE	
DESCRIPTION		CHECKED BY	
REV		APPROVED BY	
APPR: YUNSIKKIM 2010/12/28		DATE	
CHKD: SHCHU 2010/12/28		DATE	
DRWN: JHARKO1 2010/12/28		DATE	
EC NO: KOR2011-0061		DATE	
REVISED		MATERIAL NO.	
REVISIONS		SEE TABLE	
DRAFT WHERE APPLICABLE MUST REMAIN WITHIN DIMENSIONS		SIZE THIS DRAWING CONTAINS INCORPORATED AND SHOULD	
ANGULAR ± 1°		MATERIAL NO.	
DRAFT WHERE APPLICABLE MUST REMAIN WITHIN DIMENSIONS		SEE TABLE	
SIZE THIS DRAWING CONTAINS INCORPORATED AND SHOULD		MATERIAL NO.	

9 8 7 6 5 4 3

## Looking for pricing, stock, or lifecycle information?

Click below to explore more details on WIN SOURCE:

 [View 350220010 on WIN SOURCE](#)

 [Molex, LLC Information](#)

## Optimize Your Supply Chain with WIN SOURCE Solutions

-  Global Sourcing Solution
-  Obsolete Management
-  Cost Control Management
-  Shortage Management
-  Alternative Solution
-  Excess Inventory Management