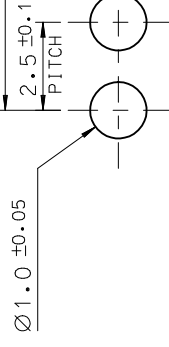
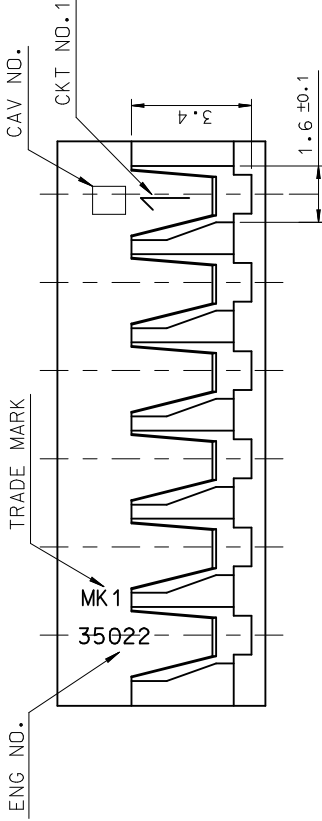
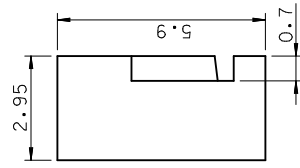
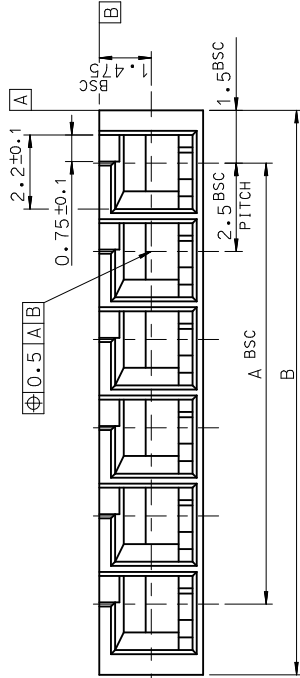
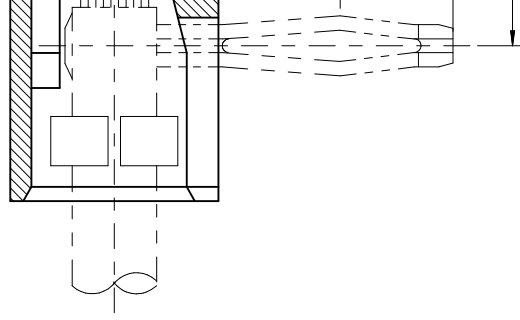




THE DATASHEET OF
350220014



10 9 8 7 6 5 4 3



P.C. BOARD
(THK)

- NOTE.
 1. MATERIAL : ① PA66,UL94V-0
 COLOR : IVORY
 2. APPLICABLE TERMINAL : 35021-1001/1101

①

41.0	37.5	35022-0016	16
38.5	35.0	-0015	15
36.0	32.5	-0014	14
33.5	30.0	-0013	13
31.0	27.5	-0012	12
28.5	25.0	-0011	11
26.0	22.5	-0010	10

GENERAL TOLERANCES (UNLESS SPECIFIED)		DIMENSION STYLE	
MM	INCH	MM ONLY	7
4 PLACES ± ---	± ---	DRAWN BY	DATE
3 PLACES ± ---	± ---	HS, SHIN	DATE
2 PLACES ± ---	± ---	CHECKED BY	DATE
1 PLACE ± 0.30	± ---	APPROVED BY	DATE
ANGULAR ± 1°		MATERIAL NO.	①male
DRAFT WHERE APPLICABLE MUST REMAIN WITHIN DIMENSIONS		SEE TABLE	
QUALITY SYMBOLS		SIZE THIS DRAWING CONTAINS	
▶=0	∇=0	A3 INCORPORATED AND SHOU	
DESCRIPTION		DOCUMENT	
REV	REV		
APPR: YUNSIKKIM	2010/12/28		
CHKD: SHCHU	2010/12/28		
DRWN: JHARKO1	2010/12/28		
EC NO: KOR2011-0061			
REVISED			

10 9 8 7 6 5 4 3

10 frame A3_P_ME-T
Rev. E 2006/04/15

Looking for pricing, stock, or lifecycle information?

Click below to explore more details on WIN SOURCE:

 [View 350220014 on WIN SOURCE](#)

 [Molex, LLC Information](#)

Optimize Your Supply Chain with WIN SOURCE Solutions

-  Global Sourcing Solution
-  Obsolete Management
-  Cost Control Management
-  Shortage Management
-  Alternative Solution
-  Excess Inventory Management