



**THE DATASHEET OF
10124352-10ALF**



10124352 - 10XLF

LEAD-FREE DESIGN
ONLY WITH APPL
PLATING CODES

SEE NOTE 2

LETTER DESIGNATION REPRESENTED IN DASH NUMBER

N	(NO KEY) 	A		B		C		D		E		F		G	
Z	(NO KEY) 	P		Q		R		S		T		U		V	

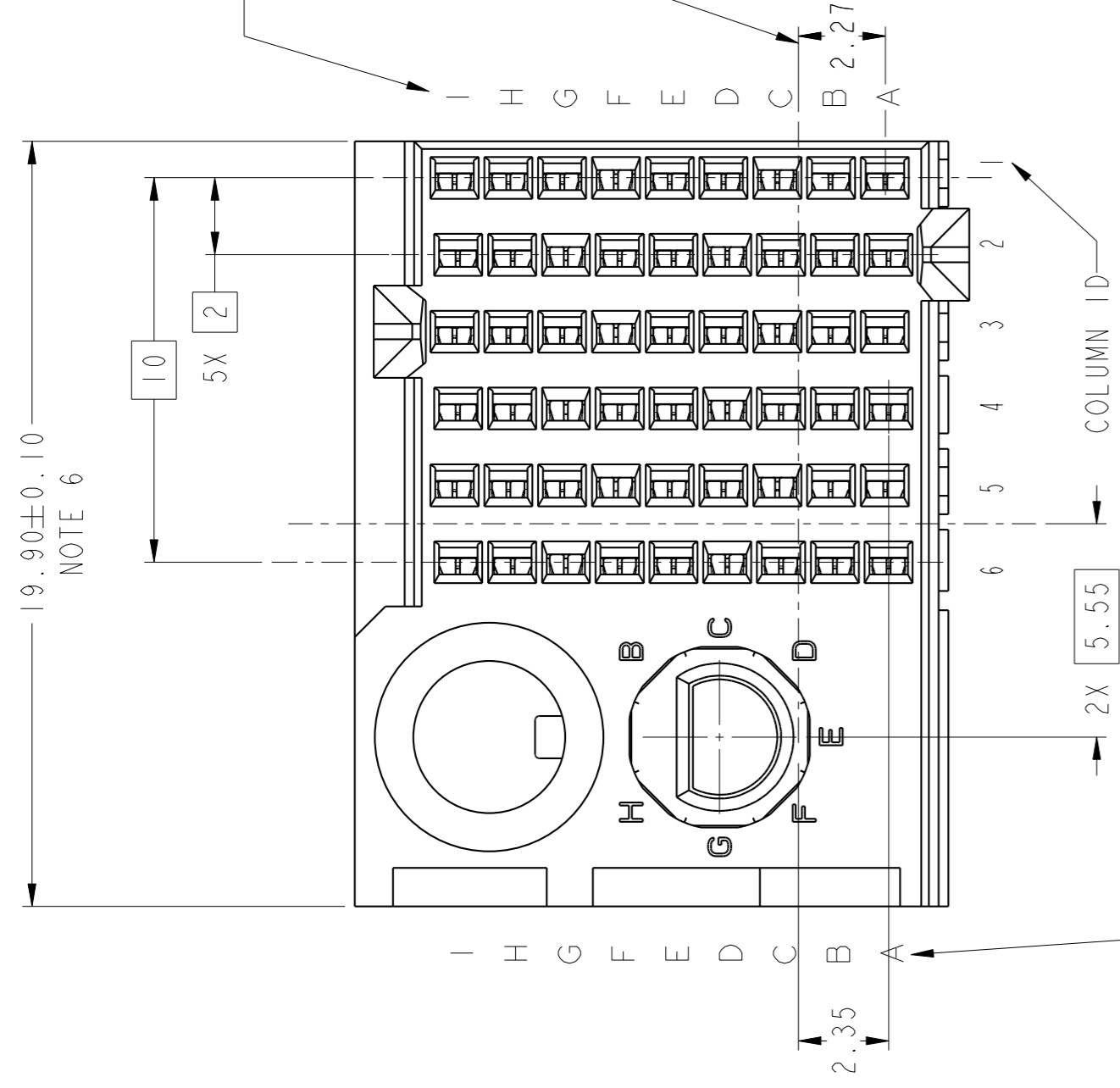
MODULE DESCRIPTION

RIGHT POLARIZING GUIDANCE MODULE (SEE SHEET 3)

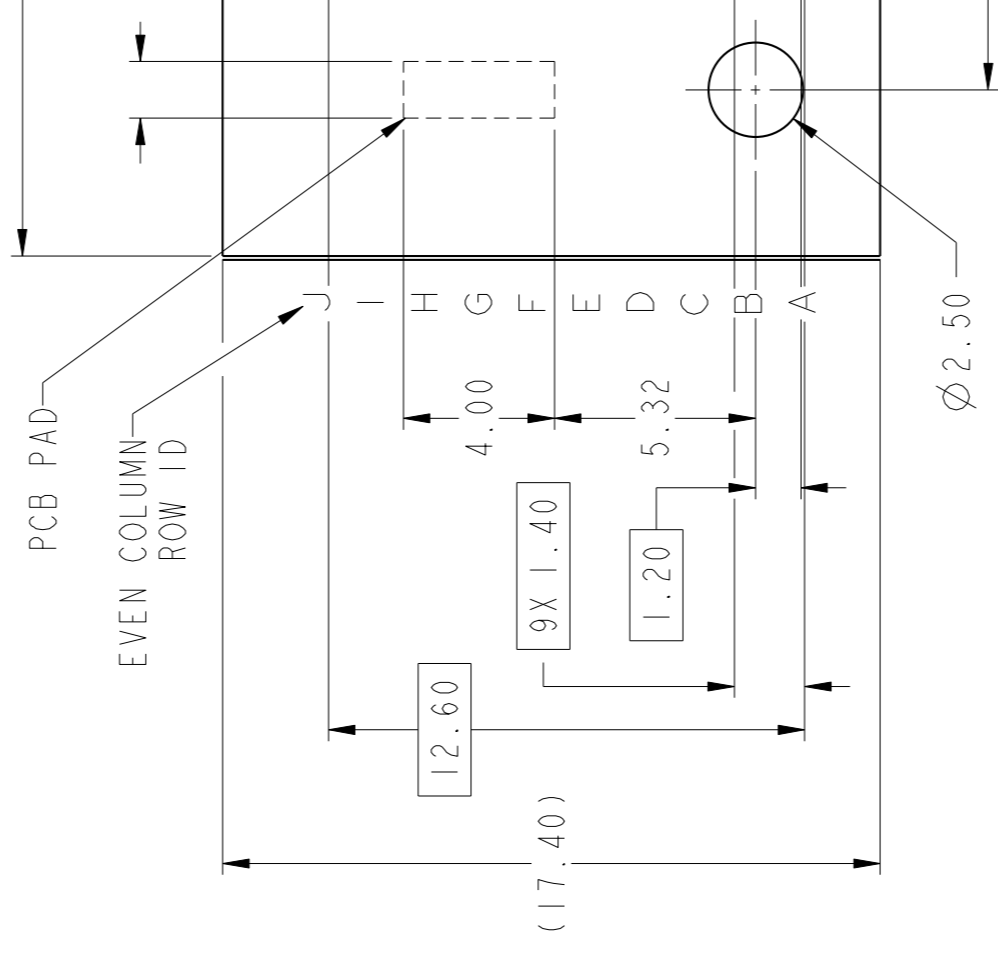
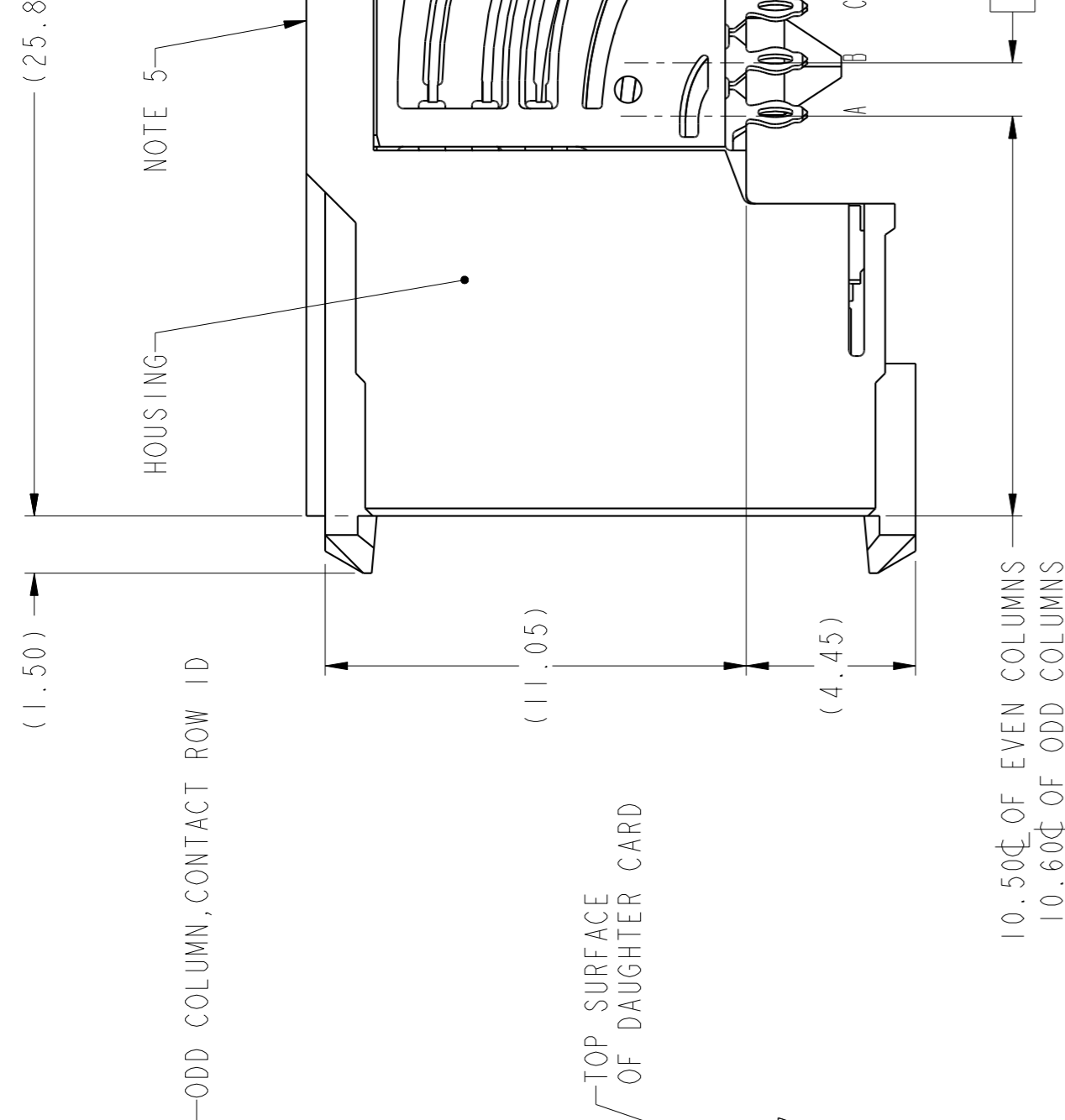
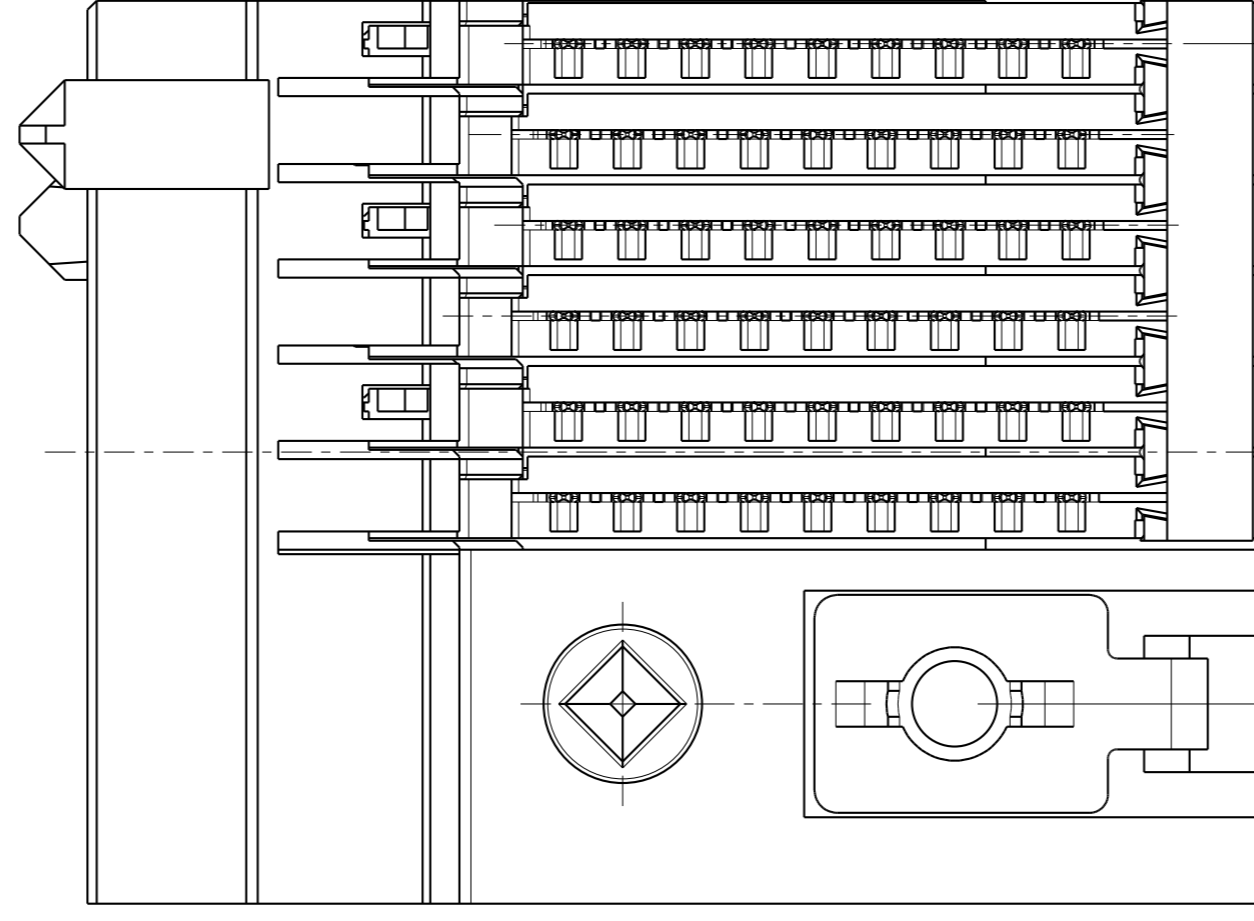
LEFT POLARIZING GUIDANCE MODULE (SEE SHEET 2)

spec. ref	---	dr	Swan
tolerance std	TOLERANCES UNLESS OTHERWISE SPECIFIED	eng	Terry
ASME	Y14.5M	chr	.
sur face	linear	appr	Howe
	angular		
	0.X ±.3		
	0.XX ±.15		
	0.XXX ±.050		
	0° ±°		

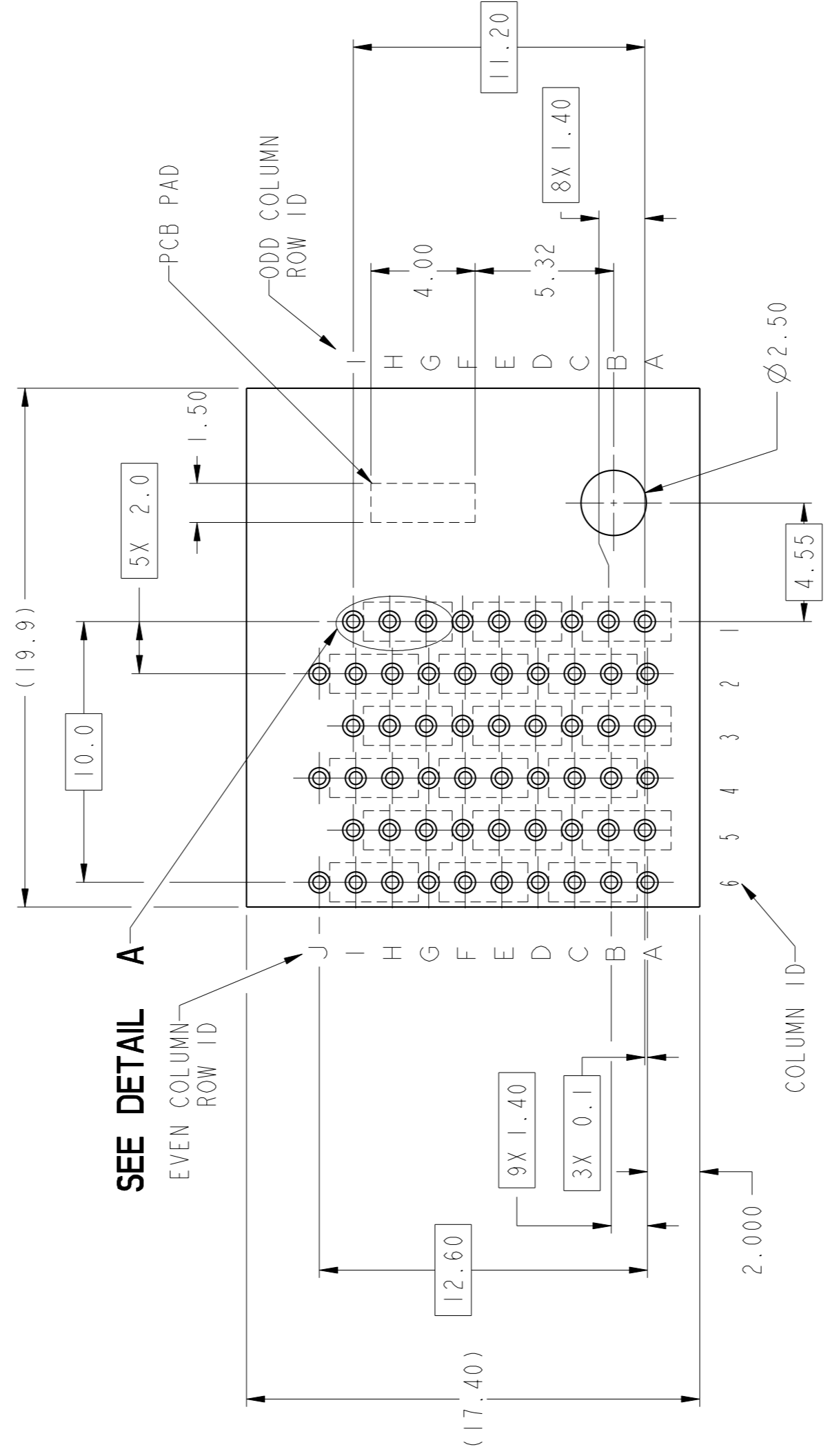
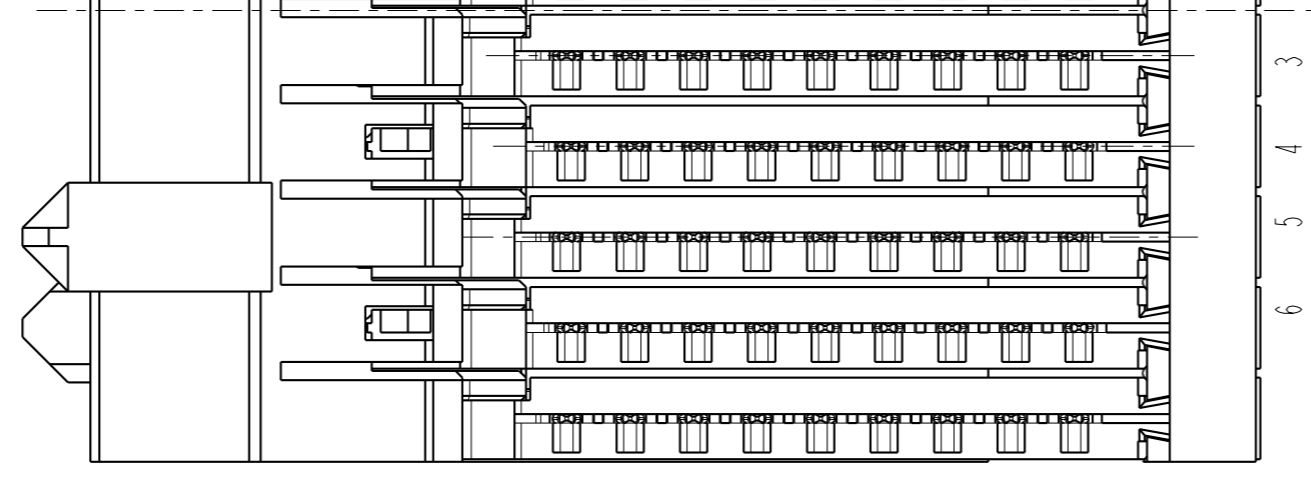
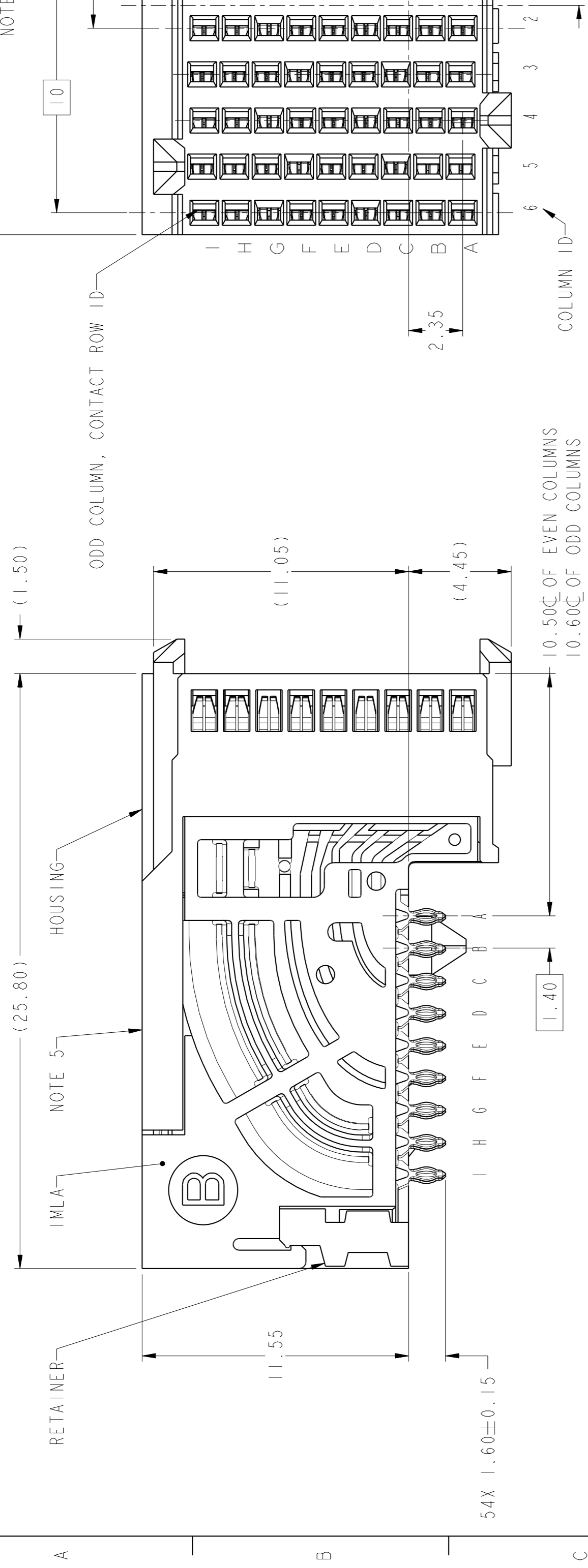
PDS: Rev E



EVEN COLUMN, CONTACT ROW ID
ODD AND EVEN COLUMNS ARE OFFSET



spec. ref.	dr.	Rev	dr.
tolerance std	ASME Y14.5M	TOLERANCES UNLESS OTHERWISE SPECIFIED	
surface	linear	angular	
	±.3	±.15	±.050
	0°.XX	0°.XX	0°



RECOMMENDED PCB LAYOUT

spec ref	---	dr	Swan
Tolerance std	TOLERANCES UNLESS OTHERWISE SPECIFIED	eng	Terry
ASME Y14.5M		chr	
surface	linear	appr	Howe
	angular		
	±.3		
	±.15		
	±.050		
	0°		

Gen File - REV E - 2016-02-12

5

4

3

2

1

F

E

D

C

B

A

6

5

4

3

2

1

I

H

G

F

E

D

C

B

A

J

I

H

G

F

E

D

C

B

A

6

5

4

3

2

1

I

H

G

F

E

D

C

B

A

J

I

H

G

F

E

D

C

B

A

6

5

4

3

2

1

I

H

G

F

E

D

C

B

A

J

I

H

G

F

E

D

C

B

A

6

5

4

3

2

1

I

H

G

F

E

D

C

B

A

J

I

H

G

F

E

D

C

B

A

6

5

4

3

2

1

I

H

G

F

E

D

C

B

A

J

I

H

G

F

E

D

C

B

A

6

5

4

3

2

1

I

H

G

F

E

D

C

B

A

J

I

H

G

F

E

D

C

B

A

6

5

4

3

2

1

I

H

G

F

E

D

C

B

A

J

I

H

G

F

E

D

C

B

A

6

5

4

3

2

1

I

H

G

F

E

D

C

B

A

J

I

H

G

F

E

D

C

B

A

6

5

4

3

2

1

I

H

G

F

E

D

C

B

A

J

I

H

G

F

E

D

C

B

A

6

5

4

3

2

1

I

H

G

F

E

D

C

B

A

J

I

H

G

F

E

D

C

B

A

6

5

4

3

2

1

I

H

G

F

E

D

C

B

A

J

I

H

G

F

E

D

C

B

A

6

5

4

3

2

1

I

H

G

F

E

D

C

B

A

J

I

H

G

F

E

D

C

B

A

6

5

4

3

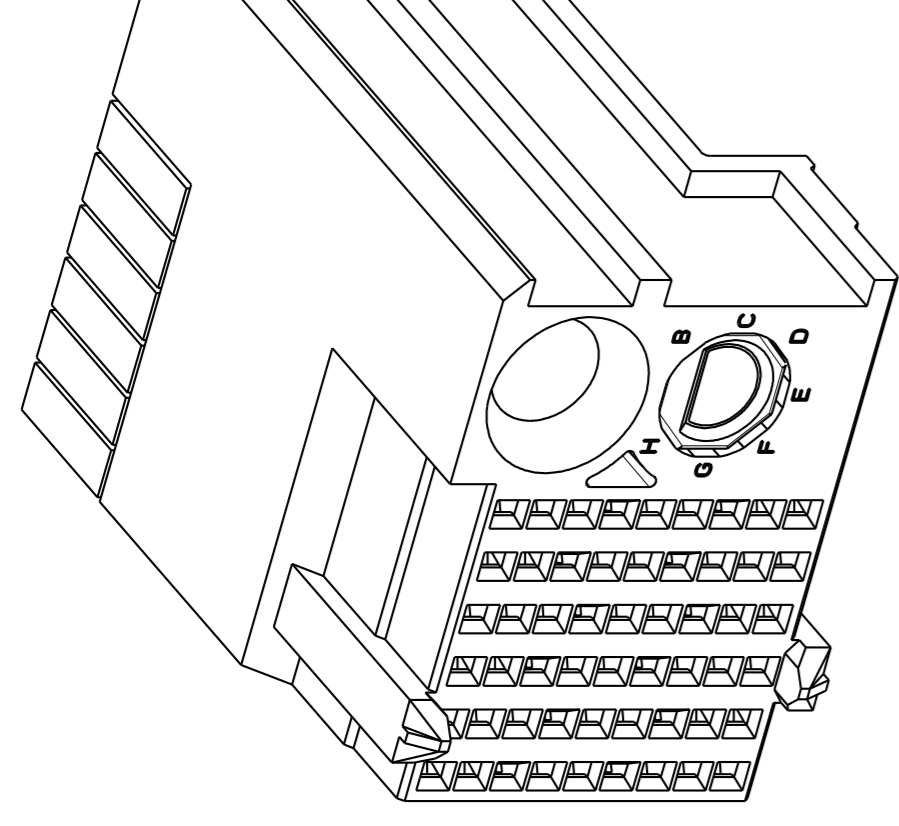
2

1

I

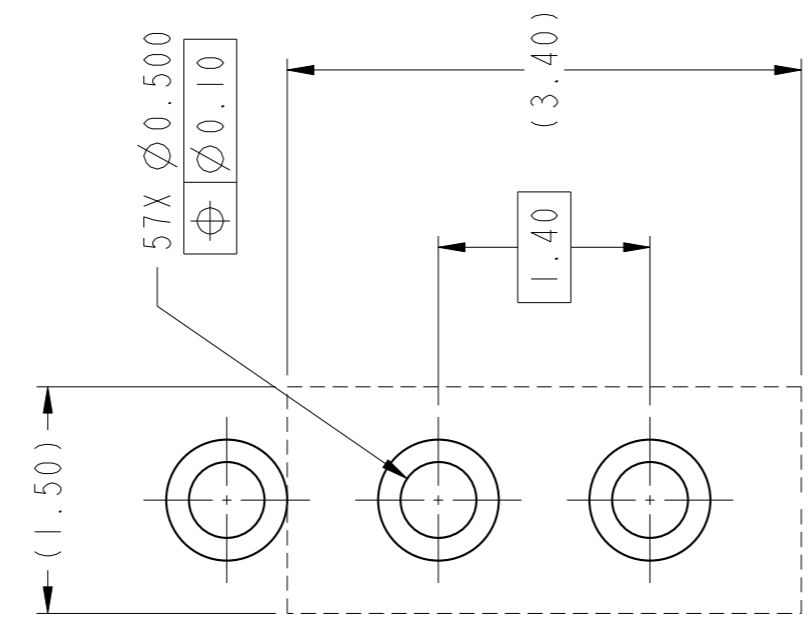
H

PRODUCT NUMBER	PRESS-FIT TAIL PLATING TYPE
10124352-10A	TIN/LEAD ALLOY OVER NICKEL
10124352-10ALF	TIN OVER NICKEL (LEAD FREE)
10124352-10P	TIN/LEAD ALLOY OVER NICKEL
10124352-10PLF	TIN OVER NICKEL (LEAD FREE)



- 1 - CONNECTOR MATERIALS:
HOUSING: HIGH TEMP THERMOPLASTIC, NATURAL, UL94-V0
IMLA PLASTIC: HIGH TEMP THERMOPLASTIC, BLACK, UL94-V0
CONTACT: COPPER ALLOY
ORGANIZER: HIGH TEMP THERMOPLASTIC, WHITE, UL94-V0
- 2 - CONTACT PLATING:
SEPARABLE INTERFACE:
PERFORMANCE-BASED PLATING, QUALIFIED TO MEET THE REQUIREMENTS OF FCI PRODUCT SPECIFICATION GS-12-0956 INCLUDING TELCORDIA GR-1217-CORE (NOVEMBER 1995) CENTRAL OFFICE TEST SEQUENCE

10124352-10A OR -10ALF



- 3 - PRODUCT SPECIFICATION: GS-12-0956
- 4 - APPLICATION SPECIFICATION: GS-20-0305.
- 5 - PRODUCT MARKING, (PART NUMBER & LOT CODE), ON THIS SURFACE.
- 6 - THE MINIMUM CENTERLINE SPACING BETWEEN ADJACENT MODULES IS 20.0 MM.
- 7 - CONNECTOR OUTLINE MAY BE SCREEN PRINTED ONTO CUSTOMER PCB TO BE USED AS A GUIDE FOR MANUAL CONNECTOR PLACEMENT.
- 8 - REFER TO CUSTOMER DRAWING 10104444 FOR INFORMATION ON PCB HOLE DIAMETERS AND PLATING OPTIONS
- 9 - LEAD FREE PRODUCT MEETS THE EUROPEAN UNION DIRECTIVES & OTHER COUNTRY REGULATIONS AS DESCRIBED IN GS-22-008
- 10 - PACKAGING MEETS GS-14-920 LEAD FREE LABELING SPECIFICATION.
- 11 - GROUND CONTACTS (C, F, AND I IN ODD COLUMNS AND A, D, AND G, EVEN COLUMNS) REQUIRE (Ø0.500) FINISHED HOLES. SIGNAL LOCATIONS REQUIRE (Ø0.500) FINISHED HOLES.
- 12 - THESE OUTER VIAS (J) ARE OPTIONAL. WHILE NO CONNECTOR EONS ARE PRESSED INTO THESE HOLES WE RECOMMEND (Ø0.500) FINISHED HOLES AT THESE LOCATIONS TO PROVIDE GROUND SYMMETRY THROUGH THE PCB.



DETAIL A
SCALE 20:1

spec ref	---	dr	Swam
tolerance std	TOLERANCES UNLESS OTHERWISE SPECIFIED	eng	Terry
ASME	Y14.5M	chr	
sur face	linear	appr	Howe
	angular		
	0.X ±.3		
	0.XX ±.15		
	0.XXX ±.050		
	0° ±°		

PDS: Rev E

Looking for pricing, stock, or lifecycle information?

Click below to explore more details on WIN SOURCE:

[View 10124352-10ALF on WIN SOURCE](#)

[Amphenol FCI Information](#)

Optimize Your Supply Chain with WIN SOURCE Solutions

- ✓ Global Sourcing Solution
- ✓ Obsolete Management
- ✓ Cost Control Management
- ✓ Shortage Management
- ✓ Alternative Solution
- ✓ Excess Inventory Management