



**THE DATASHEET OF  
G40HC132212HR**



# Mini-SAS HD

**Amphenol**  
Commercial Products



## Features:

- SFF-8643 compliance
- Meets SAS 3.0 (12Gbps) electrical performance
- 0.75mm pitch connector system
- Improved signal integrity & minimized cross-talk
- Eliminates need for mechanical key
- Pinouts map easily with existing Mini SAS product
- Press-fit pin design provides one step placement onto PCB

## Overview:

Amphenol's Mini-SAS High Density connector system is the next generation SAS system that provides faster data rates and more bandwidth. It provides double the port density of current Mini-SAS connectors with 1X1 (4x), 1X2 (8x) and 1X4 (16x) port options. The Mini-SAS HD connector system has a two-row, right-angle connector with 12Gbps of data rate per channel. Each connector (port) handles 4 lanes of data rate for up to 48Gbps. of total bandwidth.



## Applications:

- Medical
- Telecom
- Networking
- Server
- Storage
- Test & Industrial



To learn more about Mini-SAS HD connectors:

web: [amphenolcanada.com](http://amphenolcanada.com)

email: [sales@amphenolcanada.com](mailto:sales@amphenolcanada.com)

## Technical Characteristics:

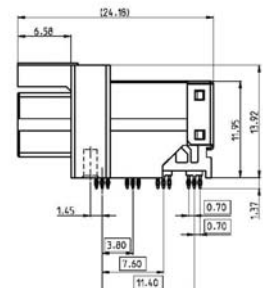
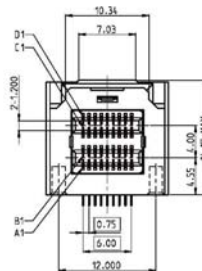
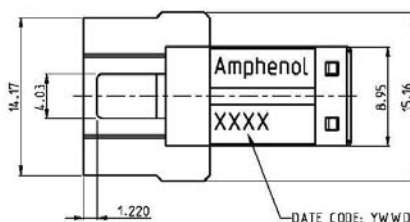
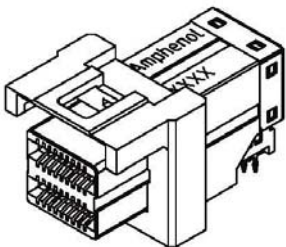
Electrical	
<b>Operating Current</b>	0.5A max. per contact
<b>Operating Voltage</b>	30V AC(rms)/DC max.
<b>DWV</b>	300V DC
<b>Insulation Resistance</b>	1000MΩ min.
<b>Differential Impedance</b>	100Ω ±10Ω

Mechanical	
<b>Mating Force</b>	100N max.
<b>Unmating Force</b>	50N max.
<b>Durability</b>	250 cycles

Series	Configuration Type	Termination Style	Impedance Spec	Port	Wall Version
<b>G40H11</b>	Right Angle	Press Fit	100 ohm	1x1	Single
<b>G40H12</b>	Right Angle	Press Fit	100 ohm	1x2	Single
<b>G40H13</b>	Right Angle	Press Fit	100 ohm	1x4	Single
<b>G40HA1</b>	Right Angle	Press Fit	85 ohm	1x1	Single
<b>G40HA2</b>	Right Angle	Press Fit	85 ohm	1x2	Single
<b>G40HA3</b>	Right Angle	Press Fit	85 ohm	1x4	Single
<b>G40H21</b> <b>G40H22</b>	Vertical	SMT	100 ohm	1x1 1x2	Single
<b>G40H31</b> <b>G40H32</b>	Vertical	SMT	100 ohm	1x1 1x2	Dual
<b>G40H41</b> <b>G40H42</b>	Vertical	SMT	100 ohm	1x1 1x2	Four
<b>G40HB1</b> <b>G40HB2</b>	Vertical	SMT	85 ohm	1x1 1x2	Single
<b>G40HC1</b> <b>G40HC2</b>	Vertical	SMT	85 ohm	1x1 1x2	Dual
<b>G40HD1</b> <b>G40HD2</b>	Vertical	SMT	85 ohm	1x1 1x2	Four

## Dimensions:

All drawings are measured in inches (mm).



\* Please visit [amphenolcanada.com](http://amphenolcanada.com) to find drawings for other products in this series.

## Looking for pricing, stock, or lifecycle information?

Click below to explore more details on WIN SOURCE:

- ⊖ [View G40HC132212HR on WIN SOURCE](#)
- ⊖ [Amphenol Commercial Products Information](#)

## Optimize Your Supply Chain with WIN SOURCE Solutions

- ✓ Global Sourcing Solution
- ✓ Obsolete Management
- ✓ Cost Control Management
- ✓ Shortage Management
- ✓ Alternative Solution
- ✓ Excess Inventory Management